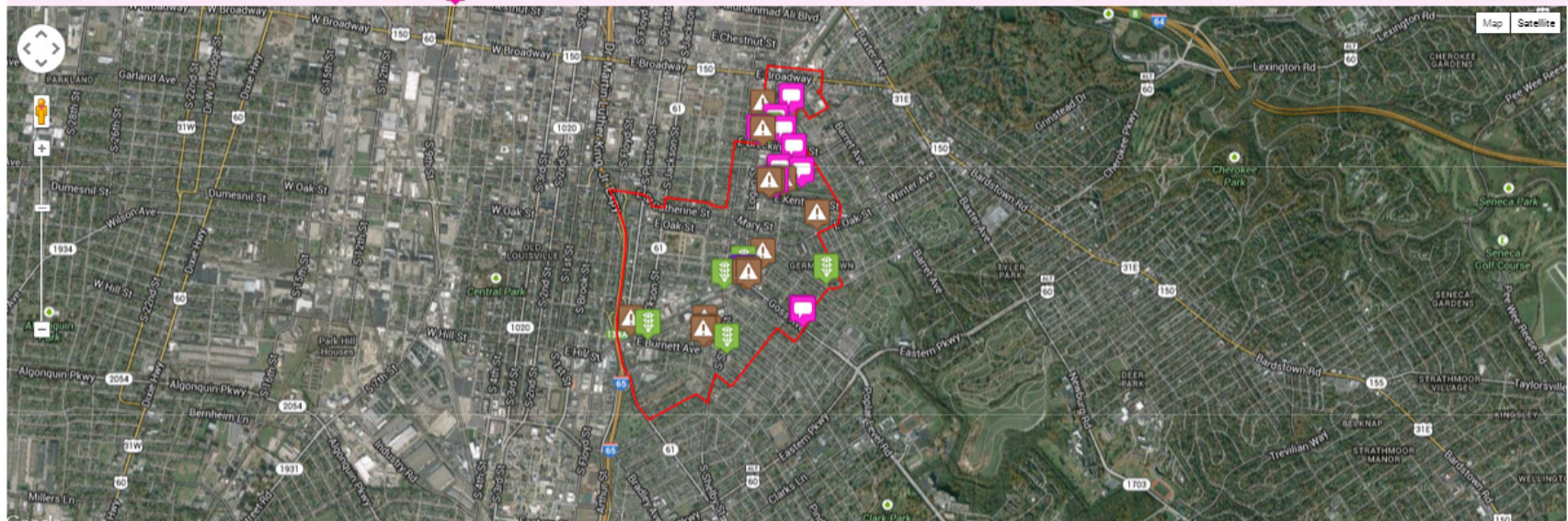




Home Mapped Comments +

We are collecting citizen feedback about Germantown, Shelby Park, Smoketown and other neighborhoods within our study area! Please leave comments about potential existing brownfield sites, transportation/circulation issues and opportunities, environmental issues and opportunities, community amenities and any other general comments you may have on your neighborhood that you want to share! [Add your comment to the map](#) or see what your neighbors have said by clicking on the icons below. If you would like to make a general comment, [do it here](#).

Add a comment to this map by zooming and clicking on the location for your comment | [View in Full Screen Mode](#)



Mapped Citizen Comments By Topic

- [Bicycling / Streetscape / Pedestrian Opportunity](#) (0)
- [Brownfield Site / Location](#) (15)
- [Community Amenity](#) (11)
- [Transportation Improvement](#) (6)
- [Preservation Opportunity](#) (1)

The latest comment by **Meeting 2 attendees**
Need a good study, plan for a canopy long-term
 2 weeks 5 days ago

Find us on Facebook

Germantown/Shelby Park Rail Corridor Project
 Like 154

Germantown/Shelby Park Rail Corridor Project
 May 30 at 7:47am · 🌐

Our next meeting is just around the corner! Join us June 10 at the AMVETS post on Shelby Street. And

www.communityremarks.com/louisville/index.php

GERMANTOWN / SHELBY PARK RAIL CORRIDOR
BROWNFIELD REVITALIZATION PLAN

Project Website 2014

General Directions

We are collecting citizen feedback about Germantown, Shelby Park, Smoketown and other neighborhoods within our study area! Please leave comments about potential existing brownfield sites, transportation/circulation issues and opportunities, environmental issues and opportunities, community amenities and any other general comments you may have on your neighborhood that you want to share! [Add your comment to the map](#) or see what your neighbors have said by clicking on the icons below. If you would like to make a general comment, [do it here](#).

Add a comment to this map by zooming and clicking on the location for your comment | [View in Full Screen Mode](#)

Interactive Map

Comment Topics/Links

Most Recent Comment

TIPS

This page has a lot of info and can link you to even more.

There are a number of links to explore on this page including:

- Breaking Comments Down by Topic
- Project Website Hosted by CEPM
- Project Facebook Page

Mapped Citizen Comments By Topic

- [Bicycling / Streetscape / Pedestrian Opportunity](#) (0)
- [Brownfield Site / Location](#) (15)
- [Community Amenity](#) (11)
- [Transportation Improvement](#) (6)
- [Preservation Opportunity](#) (1)

The latest comment by **Meeting 2 attendees**

Need a good study, plan for a canopy long-term

2 weeks 5 days ago

Find us on Facebook

Project Facebook Page

Germantown/Shelby Park Rail Corridor Project

1154

Germantown/Shelby Park Rail Corridor Project

May 30 at 7:47am

Our next meeting is just around the corner! Join us June 10 at the AMVETS post on Shelby Street. And

GERMANTOWN / SHELBY PARK RAIL CORRIDOR BROWNFIELD REVITALIZATION PLAN

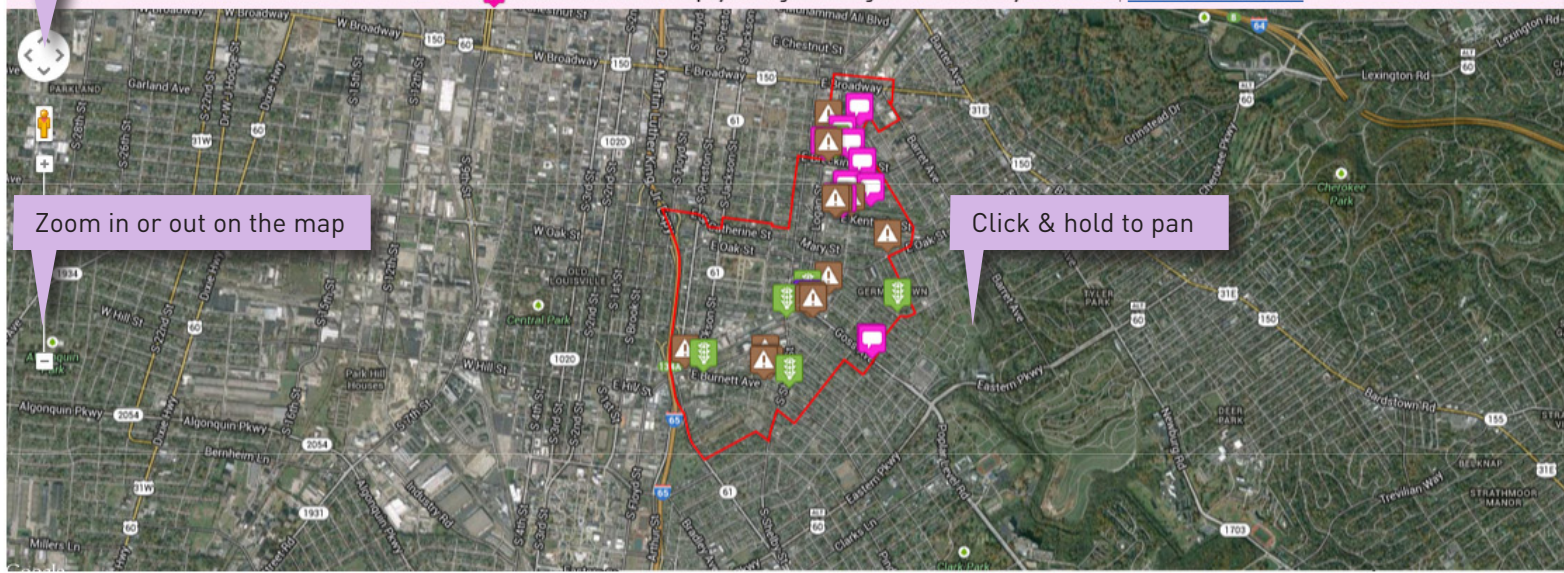
Project Website 2014

Home Mapped Comments

We are collecting citizen feedback about Germantown, Shelby Park, Smoketown and other neighborhoods within our study area! Please leave comments about potential existing brownfield sites, transportation/circulation issues and opportunities, environmental issues and opportunities, community amenities and any other general comments you may have on your neighborhood that you want to share! [Add to the map](#) or see what your neighbors have said by clicking on the icons below. If you would like to see a general comment, [do it here.](#)

Move the map left, right, up and down

Add a comment to this map by zooming and clicking on the location for your comment | [View in Full Screen Mode](#)



Zoom in or out on the map

Click & hold to pan

- ### Mapped Citizen Comments By Topic
- [Bicycling / Streetscape / Pedestrian Opportunity](#) (0)
 - [Brownfield Site / Location](#) (15)
 - [Community Amenity](#) (11)
 - [Transportation Improvement](#) (6)
 - [Preservation Opportunity](#) (1)

The latest comment by **Meeting 2 attendees**
Need a good study, plan for a canopy long-term
 2 weeks 5 days ago

Find us on Facebook

Germantown/Shelby Park Rail Corridor Project
 154 Likes

Germantown/Shelby Park Rail Corridor Project
 May 30 at 7:47am · 🌐

Our next meeting is just around the corner! Join us June 10 at the AMVETS post on Shelby Street. And

USING THE MAP

The website uses a Google maps format, the easiest way to use this is to play around with it. The mouse is your best friend.

Any time the mouse hovers over the map:

- You can also use the roller ball or scale bar on the left to zoom in and out.
- You can click and hold to pan the map side to side and up and down
- If you simply click and let go you will be asked to give a comment

Community Remarks for l x

www.communityremarks.com/Louisville/index.php

Apps GBCI: Green Buildin... https://time.lordac... Deltek Imported From IE Never-before-seen... Stormwater Case St... DIY Blogger House... iphone - lrjohn3@g...

GERMANTOWN / SHELBY PARK RAIL CORRIDOR BROWNFIELD REVITALIZATION PLAN

Project Website 2014

Home Mapped Comments ↓

We are collecting citizen feedback about Germantown, Shelby Park, Smoketown and other neighborhoods within our study area! Please leave comments about potential existing brownfield sites, transportation/circulation issues and opportunities, environmental issues and opportunities, community amenities and any other general comments you may have on your neighborhood that you want to share! [Add your comment to the map](#) or see what your neighbors have said by clicking on the icons below. If you would like to make a general comment, [do it here](#).

Add a comment to this map by zooming and clicking on the location for your comment | [View in Full Screen Mode](#)

Add A Comment

Name (required)
John Doe

Email (optional, it will be kept private)
JDoe@gmail.com

Comment Category (required)
Community Amenity

Comment (required)
Continue to support a self sufficient recycling/reuse program in the neighborhood!

Link (include http://) **Image**
Choose File No file chosen
Jpg, Gif, or Png, Max: 2MB

SUBMIT

Click ANYWHERE on map to place a comment

MAKING COMMENTS

If you simply click anywhere on the map an icon will be placed exactly where you clicked and the comment box (shown to the left) will pop up.

Mapped Citizen Comments By Topic

- [Bicycling / Streetscape / Pedestrian Opportunity](#) (0)
- [Brownfield Site / Location](#) (15)

The latest comment by **Meeting 2 attendees**

Need a good study, plan for a canopy long-term

2 weeks 5 days ago

GERMANTOWN / SHELBY PARK RAIL CORRIDOR BROWNFIELD REVITALIZATION PLAN



Project Website

2014

Home Mapped Comments

We are collecting citizen feedback about Germantown, Shelby Park, Smoketown and other neighborhoods within our study area! Please leave comments about potential existing brownfield sites, transportation/circulation issues and opportunities, environmental issues and opportunities, community amenities and any other general comments you may have on your neighborhood that you want to share! [Add your comment to the map](#) or see what your neighbors have said by clicking on the icons below. If you would like to make a general comment, [do it here](#).

MAKING COMMENTS

To make the comment simply fill out the information within the pop up box.

Add a comment to this map by zooming and clicking on the location for your comment | [View in Full Screen Mode](#)

Add A Comment

Name (required)

Email (optional, it will be kept private)

Comment Category (required)

Comment (required)

Link (include http://)
Image No file chosen
Jpg, Gif, or Png; Max: 2MB

Feel free to use your full name, initials or another alias to stay anonymous

Please add your e-mail so we can stay in contact

Be sure to choose the correct comment category!

Take your time and clearly state your comment, issue or opportunity

If you have a digital picture of an issue or opportunity you can attach/upload that here

Click to submit your comment

Mapped Citizen Comments By Topic

- [Bicycling / Streetscape / Pedestrian Opportunity](#) (0)
- [Brownfield Site / Location](#) (15)

The latest comment by **Meeting 2 attendees**

Need a good study, plan for a canopy long-term

2 weeks 5 days ago

Community Remarks for l x

www.communityremarks.com/Louisville/index.php

Apps GBCI: Green Buildin... https://time.lordac... Deltek Imported From IE Never-before-seen ... Stormwater Case St... DIY Blogger House ... iphone - lrjohn3@g...

GERMANTOWN / SHELBY PARK RAIL CORRIDOR BROWNFIELD REVITALIZATION PLAN

Project Website 2014

Home Mapped Comments ↓

We are collecting citizen feedback about Germantown, Shelby Park, Smoketown and other neighborhoods within our study area! Please leave comments about potential existing brownfield sites, transportation/circulation issues and opportunities, environmental issues and opportunities, community amenities and any other general comments you may have on your neighborhood that you want to share! [Add your comment to the map](#) or see what your neighbors have said by clicking on the icons below. If you would like to make a general comment, [do it here](#).

Add a comment to this map by zooming and clicking on the location for your comment. View in Full Screen Mode

Click Icons to Read Previous Comments

Meeting 1 attendee

1 Votes 1 Votes

Louisville Cotton Mill: Concerns about on-street parking, concerns over low-income families moving in, concerns about storm water runoff and flooding.

COMMENT

READING OTHER COMMENTS

You also see all of the other comments that have been made. Simply click on any icon and the comment will pop up.

You also have the ability to agree or disagree with those comments by clicking on the thumbs up & thumbs down.

- Mapped Citizen Comments By Topic**
- [Bicycling / Streetscape / Pedestrian Opportunity](#) (0)
 - [Brownfield Site / Location](#) (15)

The latest comment by **Meeting 2 attendees**

Need a good study, plan for a canopy long-term

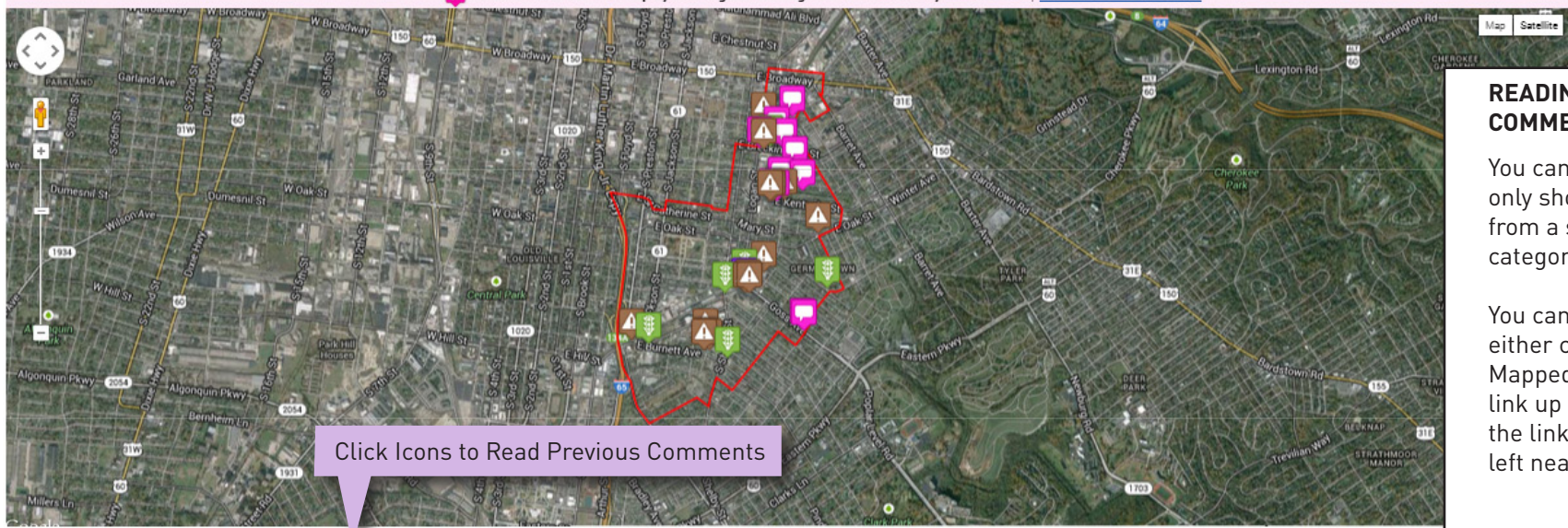
2 weeks 5 days ago



Home Mapped Comments +

We are collecting citizen feedback about Germantown, Shelby Park, Smoketown and other neighborhoods within our study area! Please leave comments about potential existing brownfield sites, transportation/circulation issues and opportunities, environmental issues and opportunities, community amenities and any other general comments you may have on your neighborhood that you want to share! [Add your comment to the map](#) or see what your neighbors have said by clicking on the icons below. If you would like to make a general comment, [do it here](#).

Add a comment to this map by zooming and clicking on the location for your comment | [View in Full Screen Mode](#)



READING OTHER COMMENTS

You can also choose to only show comments from a specific category.

You can do this by either clicking on the Mapped Comments link up top, or on one of the links on the bottom left near the icons.

- Mapped Citizen Comments By Topic
- [Bicycling / Streetscape / Pedestrian Opportunity](#) (0)
 - [Brownfield Site / Location](#) (15)
 - [Community Amenity](#) (11)
 - [Transportation Improvement](#) (6)
 - [Preservation Opportunity](#) (1)

The latest comment by **Meeting 2 attendees**
Need a good study, plan for a canopy long-term
 2 weeks 5 days ago

Find us on Facebook

Germantown/Shelby Park Rail Corridor Project
 154 likes

Germantown/Shelby Park Rail Corridor Project
 May 30 at 7:47am · 🌐

Our next meeting is just around the corner! Join us June 10 at the AMVETS post on Shelby Street. And