

# Center for Environmental Policy and Management

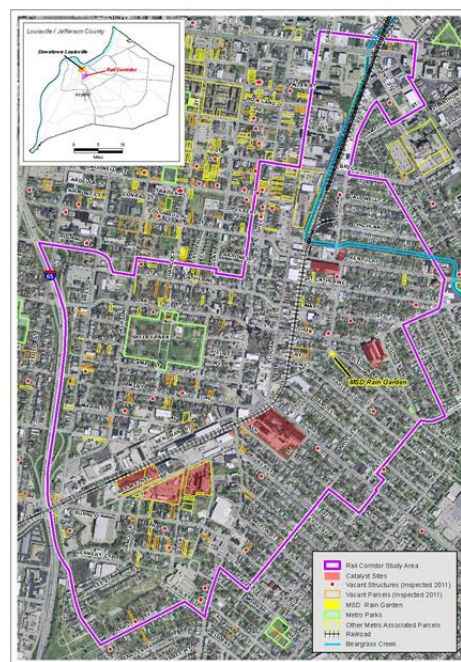
## TABLE OF CONTENTS

- Community Kick-Off Meeting: Brownfields Area-wide Planning Grant: Germantown/Shelby Park Rail Corridor
- Safe Soils Program
- Nashville's Urban Green Lab
- Center for Creative Land Recycling to Host Three Workshops in Southeast Kentucky
- First Annual Southeast Brownfields Conference
- Center for Environmental Policy and Management

## Community Kick-Off Meeting: Brownfields Area-wide Planning Grant: Germantown/Shelby Park Rail Corridor

The Community Kick-Off Meeting for the Germantown/Shelby Park Rail Corridor Project will be Tuesday, April 8, from 6:30 pm to 8:30 pm. at Shelby Traditional Academy, 735 Ziegler. Please join us to learn about the project, meet the teams who are working on it, and connect with neighbors. Light refreshments will be provided.

CEPM is partnering with Louisville Metro's Office of Economic Growth and Innovation to develop an area wide plan for the Germantown/Shelby Park Rail Corridor. The area wide planning effort will include community education and outreach, a site inventory and an overview of potential health risks associated with known environmental contamination. Developing a community wide plan will result in identification of catalyst sites, desirable types of redevelopment, implementation strategies for redevelopment, and the development of plans for connectivity between the surrounding neighborhoods.



Germantown / Shelby Park Rail Corridor

Aerial Imagery: Spring, 2009





## WELCOME TO THE SAFE URBAN GARDENING MEETING

BROUGHT TO YOU BY



At CEPM we are continuing our partnership with Louisville Metro and the Jefferson County Extension Service to provide Louisville residents with information on safe urban gardening practices by taking part in local neighborhood association meetings. We will be visiting several neighborhoods in the coming months and will also be at the Louisville Free Public Library's How-To Festival on Saturday, May 10, with information about free soil testing and lots of safe gardening resources. If you would like us to present to your neighborhood association, community group or faith group about safe soil practices, please contact us at [cepmefc@louisville.edu](mailto:cepmefc@louisville.edu) or 502-852-6042. To learn more, visit our [website](#).

### Nashville's Urban Green Lab

Urban Green Lab (UGL) is Nashville's first nonprofit dedicated to improving the health and well-being of the city through sustainability. UGL has recently released their "**Living Green, Saving Green**" guide to energy conservation with great tips for helping the environment while saving money on energy costs.



UGL fills a gap by offering programs that inspire people of all ages to incorporate sustainability into their daily lives. Workshops – on everything from green building to urban agriculture – spark positive changes at home and work that save money, improve health, and conserve resources. Through partnerships with local businesses, government, and nonprofits, UBL works to expand their reach in offering this needed service, and team with local colleges to monitor their impact. Learn more at [www.urbangreenlab.org](http://www.urbangreenlab.org).

### Center for Creative Land Recycling to Host Three Workshops in Southeast Kentucky

Three free workshops will be held on May 14 and 15 in the Southeast Kentucky towns of London, Hazard, and Prestonburg, hosted by the

Center for Creative Land Recycling. These workshops are designed to help local governments, economic and community development departments, non-profits, and councils of government learn how and where to obtain funding and manage projects to redevelop previously-used sites, including brownfields. Federal and state experts and seasoned brownfield redevelopment practitioners will be on-hand to discuss funding sources, project management, and give advice on how to move projects forward. To learn more and to register, visit [The Center for Creative Land Recycling](#).

## First Annual Southeast Brownfields Conference

The First Annual Southeast Brownfields Conference will take place October 28-31, 2014, in Orlando, Florida. Save the date if you are interested in attending. Visit the [Florida Brownfields Association](#) for more information.

## Center for Environmental Policy and Management

The University of Louisville Center for Environmental Policy and Management (CEPM) seeks to provide research and technical

assistance to local, state, and tribal governments, businesses and non-profit organizations regarding sustainable environmental policy and program development and evaluation. The CEPM houses the UofL Environmental Finance Center serving EPA Region 4. The EFC@UofL is a member of the Environmental Finance Center Network (EFCN) which allows us to access environmental experts from across the country from 10 different academic institutions. Feel free to contact us at [louisville.edu/cepm](http://louisville.edu/cepm) or at (502) 852-3869.

UNIVERSITY OF  
**LOUISVILLE**  

---

**CENTER FOR ENVIRONMENTAL  
POLICY & MANAGEMENT**

[Edit your subscription](#) | [Unsubscribe instantly](#)