

Center for Environmental Policy and Management

TABLE OF CONTENTS

- **Announcing the Brownfields Community Benefits Project**
- **Organics Recovery Toolkit for Universities and Colleges**
- **HUD Sustainable Communities Initiative**
- **EFCN Small Water Systems FREE Trainings**
- **New Practice Guide: Implementing Environmental Psychology Principles to Improve Community Design**
- **Public Comment Meetings on Oil and Gas Development in Kentucky**
- **Vanishing Firefly Project for Citizen Scientists**
- **2015 Brownfields Conference September 2-4**
- **EJSCREEN: Environmental Justice Screening and Mapping Tool**
- **Green Infrastructure Collaborative**
- **Center for Environmental Policy and Management**

Announcing the Brownfields Community Benefits Project

The **Metropolitan Institute at Virginia Tech** and the **Center for Environmental Policy and Management at the University of Louisville** are pleased to announce that we have been awarded a five-year research grant by the **EPA's Brownfields Training, Research, and Technical Assistance Grants program**. Together with partners from **The E.P. Systems Group, Inc.** and **Lazarus LLC**, we will develop and pilot test a Brownfields Community Benefits Assessment Toolkit (BCBAT). This project is unique in that it will re-examine and augment traditional economic benefit models for redevelopment and in-fill to include a broader set of indicators that have until recently been difficult to systematically measure. It will also explore the efficacy and value of including hyper-local community collected data in these models now that technological advances open the door to systematic and consistent collection of that level of information. The toolkit will be based on an easy to use portable app linked with a web-based desktop portal. The system will use accessible national, state, regional, local, and hyper-local data as the foundation for benefit calculation formulas we develop.

The goal of this project is to enhance community decision makers' capacity to measure and track the benefits of redeveloping brownfields and thus expand the number of abandoned, vacant, and under-utilized properties that get cleaned up and considered community assets. Our pilot community will be Louisville/Jefferson County Metro Government, a community that has made huge strides in successful brownfields redevelopment, implemented policies on open data, and developed innovative tracking of vacant, abandoned and brownfields properties.

Our team leaders include:

-Joseph Schilling, LL.M. Senior Fellow, Metropolitan Institute, Professor of Practice, Urban Affairs & Planning, Virginia Tech—Alexandria, VA.

-Dr. Lauren C. Heberle, Associate Professor of Sociology, Director of the Center for Environmental Policy and Management, University of Louisville.

-Dr. Peter B. Meyer, President and Chief Economist of The E.P. Systems Group, Inc., and Professor Emeritus of Urban Policy and Economics at the University of Louisville.

-Chris Harrell, J.D., M.P.A., Founder and Director of Redevelopment for Lazarus Group LLC of Indianapolis, and Lazarus LLC, a wholly owned subsidiary based in Louisville, KY.

For more information, please contact either Joseph Schilling, LL.M, at 703-706-8102 or Dr. Lauren Heberle at 502-852-4749.

Organics Recovery Toolkit for Universities and Colleges

Through Fall of 2015, EPA Region 4, Resource Conservation and Recovery Act (RCRA) Programs & Materials Management Branch is partnering with the University of Louisville Center for Environmental Policy and Management EFC4 (CEPM/EFC4) to develop an organics recovery toolkit for colleges and universities. This advisory document will provide colleges and universities technical guidance on policies, technical and economic feasibility, and implementation issues relevant to developing a sustainable management protocol for organics. If you are interested in learning more about this project as it progresses, visit [here](#).

HUD Sustainable Communities Initiative

The Center has wrapped up our work as a capacity builder under the HUD Sustainable Communities Initiative. While this program has ended, our work continues as members of the **Sustainable Communities**

Learning Network and we of course

continue to offer technical assistance as an EFC and member of the **EFCN**. We will house all materials that we developed under the program on our center website **HUD project page**. Also, please take a look at The **Better Plans for Better Places** report, created by our **Capacity Building partner ISC**, that summarizes much of the great work accomplished by the HUD SCI grantee communities. It was an honor working with all the wonderful grantee communities. We look forward to staying in touch!



EFCN Small Water Systems FREE Trainings

The Environmental Finance Center Network is offering the following free workshops in Region 4:

Webinar: Setting Rates Using a Free Excel-based Model August

11, 2015. This webinar will help water systems by demonstrating the Water and Wastewater Rates Analysis Model, a free basic Excel-based tool developed for small water systems by the Environmental Finance Center at the University of North Carolina, Chapel Hill.

Georgia: Water Loss Workshop for Small Water Systems.

September 1, 2015. Do you have a “paper loss” or a “real loss?” How do you account for water? Where and how do you meter? Understanding water loss is important for stable revenue and system integrity. Understanding the problem helps system owners design appropriate water loss management strategies.

To see a complete listing of upcoming workshops, visit [EFCN](#).

New Practice Guide: Implementing Environmental Psychology Principles to Improve Community Design

Environmental psychology is the study of how humans interact with their natural and built environments and at its heart are evaluations of how the physical elements of the space, as well as individual social factors and biological responses, influence the end-user. This practice guide gives an explanation of the specialty, case studies that illustrate the application of core principles in the field to overcome existing challenges, and suggestions for funding sources to put ideas into action. Find a listing of this and all our practice guides [here](#).

Public Comment Meetings on Oil and Gas Development in Kentucky

The Kentucky Energy and Environment Cabinet (EEC) and its agencies have set the dates and locations for three public meetings to allow interested parties to submit comments concerning oil and gas development in the Commonwealth. The locations will be in **Madisonville, Somerset and Hazard**. For a full listing of the locations and times of public meetings, see the full press release [here](#).

Anyone who cannot attend the meetings in person, but wishes to submit written comments may do so by July 31. Those written comments can be emailed to OilandGasComments@ky.gov between July 7 and July 31.

Vanishing Firefly Project for Citizen Scientists

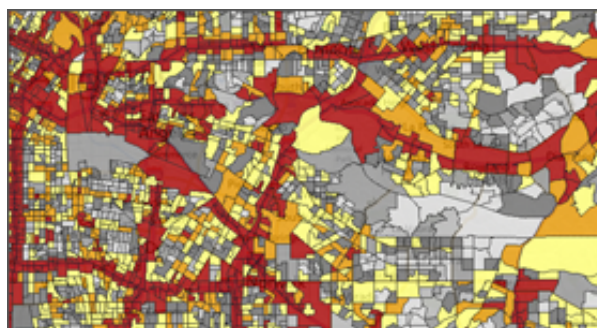


Please consider taking just 60 seconds to help Clemson University with a study on fireflies (lightening bugs to some!). They are seeking to better understand firefly populations around the country. This is a great chance to enjoy some outdoor time with the family and contribute to science! Visit Clemson's **Vanishing Firefly Project** to learn more.

2015 Brownfields Conference September 2-4



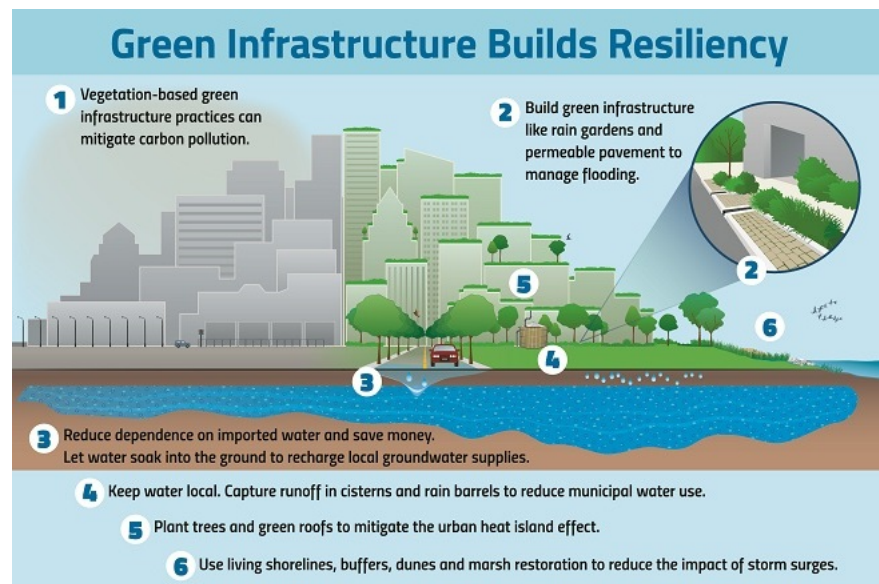
EJSCREEN: Environmental Justice Screening and Mapping Tool



In order to better meet the Agency's responsibilities related to the protection of public health and the environment, EPA has developed a new environmental justice (EJ) mapping and screening tool called

EJSCREEN. EJSCREEN is an environmental justice mapping and screening tool that provides EPA with a nationally consistent dataset and approach for combining environmental and demographic indicators. Learn more [here](#).

Green Infrastructure Collaborative



The EPA's Green Infrastructure Collaborative is a network to help communities more easily implement green infrastructure. The Collaborative will build capacity for green infrastructure implementation by providing a platform for national stakeholders to:

- Leverage joint efforts to promote the multiple community benefits of green infrastructure;
- Build and share knowledge around emerging green infrastructure technologies and policy issues; and
- Facilitate shared inquiry into the best ways to encourage adoption of green infrastructure technologies at the local level.

Learn more at the [EPA's Green Infrastructure page](#).

Center for Environmental Policy and Management

UNIVERSITY OF
LOUISVILLE
CENTER FOR ENVIRONMENTAL
POLICY & MANAGEMENT



[Edit your subscription](#) | [Unsubscribe instantly](#)