

THE SUBVERSIVE

ANNE BRADEN INSTITUTE FOR SOCIAL JUSTICE RESEARCH

Fall Events Calendar



ANDREA ARMSTRONG

18th Annual Anne Braden Memorial Lecture

The Anne Braden Institute for Social Justice Research is delighted to announce Andrea Armstrong as our lecturer for the 18th Annual Anne Braden Memorial Lecture.

Andrea Armstrong is an interdisciplinary scholar and law professor at Loyola University New Orleans. She is a leading national expert on prison and jail conditions and founder of IncarcerationTransparency.org, which collects and analyzes data on deaths behind bars and in custody. Her profound work in incarceration transparency made her one of the 2023 recipients of the MacArthur Foundation “Genius Grant”.

Armstrong’s scholarship focuses on state and federal law governing incarceration and detention policies; she often integrates law, history, public health, and the arts in her efforts to elucidate the human costs of incarceration for broad audiences. Her research, legal writings, and advocacy are rooted in incarcerated people’s experiences in Louisiana, but the influence of her work is much broader.

Armstrong’s lecture topic, **Civil Rights Behind Bars**, will respond to and challenge poor living conditions in prisons and jails, and in particular the deaths of individuals in custody. **Register with this link!**

ABI CO-SPONSORED EVENT*September 20 *****Freed Between the Lines: Banned Books Seminar**10AM-11AM, Virtual via MS Teams | [Click here to register](#)**October 3****Black Freedom, White Allies, and Red Scare Read-In**

Belknap Academic Building Atrium

11AM-1PM

October 9, October 23, & November 13**The Wall Between Reading Groups****Moderated by Cate Fosl**

5:30-7PM, Anne Braden Institute

Ekstrom Library, Room 258

October 8**Student-Faculty Social Justice Networking Event**

UofL Graduate Student Appreciation Week

2:00-3:30PM, Humanities 300 | [Click here to register](#)**October 10 *****Global Humanities Lecture**

“Swamp Tales, Trans Ghosts, and Nonbinary Magical Realism” with C. Riley Snorton

4PM, Chao Auditorium, Ekstrom Library

October TBD**The Other America: An Anne Braden Story**

Film Screening & Talkback with Guest Speakers

October 23 ***Healthcare Ethics Talk**12PM, Virtual | [Click here to register here](#)**October 24 *****Feminist, Queer, and Trans Organizing in Latin America**

Speaker: Andrés Mendieta

11:00 – 12:15PM, HUM 300

Topic: Trans Movements for Justice in the Global South

Speaker: María Inés La Greca

1:00 – 2:15PM SRB 139

Topic: Feminist Struggles in Argentina from #NiUnaMenos to the Right-Wing Backlash

November 7**18th Annual Anne Braden Memorial Lecture**

“Civil Rights Behind Bars” with Andrea Armstrong

6PM, Middleton Auditorium

November 8**Research Meets Activism Breakfast** Details TBD

LETTER FROM THE DIRECTOR

Dear friends of the ABI,

I am thrilled to write this first letter as ABI Director. 2024 marks the 100th anniversary of Anne's birth, which we celebrated in July at a marvelous party hosted by the Carl Braden Memorial Center, and the 70th anniversary of the Wade-Braden case, which will be marked by a series of October events. At a moment when it feels like the clock is being turned back on civil rights and social justice, Anne's life and the legacy of her activism are incredibly salient.



Angela Storey, ABI Director

This summer we hosted a dedication event for the Elwood and Roxanne Sturtevant Collection, a wonderful set of signed books on Civil Rights, Social Justice, music, movements, and change-making. We also began a new research project on anti-apartheid activism in Louisville, became the home for the Air Justice project, and welcomed eleven wonderful new members to our Community Council.

This fall will also be busy! In addition to our October events, I hope you will join us at the 18th annual Anne Braden Memorial Lecture this November, as we welcome Prof. Andrea Armstrong to speak about her critical work to shine a light on deaths behind bars. You can hear more from Prof. Armstrong and local activists and scholars at our Research Meets Activism breakfast the following day.

I invite you to participate in our fundraising campaign to mark Anne's 100th birthday: 100 for 100. We are asking 100 people to donate any amount to the ABI to support our work in social justice research, graduate student training, community engagement and outreach, and to bring incredible speakers like Prof. Armstrong to Louisville. You can find details on how to donate on page four.

I want to end with my sincere thanks to outgoing ABI Director Dr. Brandon McCormack who drew in his focus on religious studies through the Vote is Sacred project and emphasized the critical role of arts and humanities in social justice. Congratulations to him on his new role as chair of the Pan-African Studies Department!

My thanks also go to our excellent Program Coordinator, Deme Wharton, who took on so much in the transition between directors; to ABI founding Director Dr. Cate Fosl, who continues to work tirelessly to keep alive Anne's vision of another America; and to our marvelous ABI Community Council co-chairs, Mari Mujica, Shameka Parrish-Wright, and Carla Wallace, whose incredible dedication to a more just future shines through in everything they do. I am also deeply grateful to our new council members, GRAs for this year, summer student researchers, Faculty Affiliates, and to everyone who has come to an event, donated to support ABI, or told the story of Anne's life and activism to someone new. Together we are bringing Anne's dedication to social change into another century.

Angela Storey
ABI Director & Associate Professor of Anthropology

Fall ABI Events Commemorating the Anniversaries of 1924 and 1954

Seventy years ago, in 1954, began the sensationalized housing desegregation case in Louisville that resulted in the dynamiting of Charlotte and Andrew Wade's home and Anne and her husband Carl arrested for sedition. This year, we also celebrate 100 years since local anti-racist journalist and organizer Anne Braden's birth. The ABI will host events to commemorate these anniversaries throughout October and November. These events will be hosted in collaboration with the Carl Braden Memorial Center.

Thursday, October 3rd, 11am-1pm at Belknap Academic Building (BAB) Atrium **Black Freedom, White Allies, and Red Scare: Read-In Commemorating the Wade Home Bombing and Braden Sedition Trial**

October 2024 begins what will be 70 years since Carl and Anne's arrest and the Braden-Wade sedition trial proceedings. To recollect and recall the important literature and documents used in the trial, ABI will host a read-in of primary sources of the trial, including Anne's writings. This event will be open to the public. If you are interested in participating in the Read-In, please send us an email with the subject line 'ABI Read In Volunteer' to uoflabi@louisville.edu

October 9 & 23 and November 13, 5:30-7pm, Anne Braden Institute, Ekstrom Library **The Wall Between Reading Groups**

The ABI is hosting a campus-&-community book group to read and discuss Anne Braden's 1958 memoir, *The Wall Between*. Moderated by Braden biographer and retired UofL professor Cate Fosl, the group will meet 3 times. Come to all 3 sessions, or come to any that you can.

This story is essential reading for anyone who lives or works in Louisville. Reading of the book prior to each session is recommended (not required), but familiarity with the story is helpful for the discussion, especially the October anniversary dates.

TO SIGN UP FOR THE READING GROUPS, [CLICK THIS LINK](#) or VISIT <https://bit.ly/wallinbtw>.

The Wall Between can be acquired in several ways. Copies can be purchased in-person at Carmichaels Bookstore for 20% off at mention of the Anne Braden Institute Reading Group.



October TBD **Screening of The Other America: An Anne Braden Story**

The ABI will host a screening and talkback on 'The Other America: Anne Braden Story', a puppet film inspired by Anne Braden's 1958 memoir, *The Wall Between*. This film combines tabletop puppetry, shadow puppetry, and other techniques to tell the story of how two families challenged Louisville, Kentucky's segregated housing market. Please look out for additional information.

GIVING TO THE ANNE BRADEN INSTITUTE

The ABI relies upon the incredible generosity of our donors. Your support helps us to run workshops for students, to support and highlight engaged research by our faculty affiliates, to offer programming for the community, and to do so much more! Here we highlight some of our donors, 'Friends of the ABI', and share how you can support our work.

Stories Behind the Signatures: Premiere of the Elwood and Roxanne Sturtevant Collection



An enlightening conversation was held at the Anne Braden Institute during the week of Juneteenth, featuring Elwood Sturtevant and Dr. David Anderson (ABI Faculty Affiliate) celebrating the dedication of a book collection generously gifted by Elwood and Roxanne Sturtevant. This collection, now housed within the institute, features signed copies and special editions of works authored by esteemed scholars and activists. Attendees had the opportunity to delve into the stories and significance behind the books, exploring their profound impact and

relevance for the future. The event served as a poignant reminder of the power of literature and scholarship in advancing social justice while encouraging community engagement and contributions to academia. **The collection is available at the ABI and open to public access.**

100 for 100 years

To celebrate the **100th** Anniversary of Anne Braden's life, we are launching our 100 for 100 fundraising campaign. We are asking at least **100** Friends of the ABI to consider giving a tax-deductible gift to support the ABI. How much you give isn't the focus, but rather how many people commit to securing a legacy for social justice research at the University of Louisville. Consider yourself a Friend of the ABI and donate to the 100 for 100 campaign today. Please use link below to donate.

Donation Link: uofl.me/abigive. Give today!

If you would like to support the ABI during UofL's Day of Giving, Raise Some L, October 15-16, contact us to learn how to become an official *Advocate* to help us reach our fundraising goal. Please email uoflabi@louisville.edu with the subject line 'Raise Some L Advocate'.



WHAT'S NEW IN SOCIAL JUSTICE RESEARCH?

ABI x Air Justice Collaboration

Beginning in Summer 2024, the ABI is home to Air Justice. This impactful project began in 2021, as two former UofL faculty members, Dr. Megan Poole (English) and Prof. Shavonnie Carthens (Law), joined in coalition with Eboni Neal Cochran of REACT – Rubbertown Emergency Action. With incredible community grounding, extensive outreach, and leadership from grassroots efforts, Air Justice has supported residents in engaging more closely with processes governing air pollution, expanded community-based data collection, and collaborated with organizations across West Louisville impacted by air pollution around the industrial area known as “Rubbertown.” We are so happy to be the new home for Air Justice and to expand our work to support environmental justice. [Read more on the project here.](#)



Uncovering Louisville’s History of Anti-Apartheid

This summer saw the start of a new ABI research project on anti-apartheid activism in Louisville. Led by ABI faculty affiliate Dr. Tyler Fleming (Pan-African Studies & History), and with support by Director Angela Storey, the research draws from archival materials and oral history interviews. ABI hosted two undergrad researchers on the project this summer: Emma Posey (BA, Pan-African Studies) is a sophomore who received a Summer Research Opportunity fellowship from the UofL and Norah Laugher (BA, American Studies) is a junior from Yale University. ABI Graduate Assistant Philile Dlamini (MA, Political Science) and doctoral student Yomi Ejikunle (PhD, Pan-African Studies) have also worked diligently on archival and library research. This work will culminate in an exhibit in 2025. [Read more on the project here.](#)



History of Policing Report

An impactful 2024 policy report entitled “The History of Policing in Louisville: A Fact-Finding Report on Institutional Harms” was authored by a team of interdisciplinary ABI faculty affiliates including Dr. Felicia Jamison (History and Humanities), Dr. Siddhant Issar (Political Science), and Dr. Cate Fosl (Women, Gender, & Sexuality Studies), assisted by 3 student researchers. As the authors write, “(t)he main goal of this project is to identify and document patterns of institutional harm committed by the police in relation to marginalized communities across Metro Louisville’s history” (p6). Rooted in critical historical work, the report was cited in a resolution presented at press conference led by VOCAL-KY Executive Director, Metro Councilmember, and ABI Community Council co-chair Shameka Parrish-Wright, marking four years of calling for justice for Breonna Taylor. [Read the full report here.](#)



Pictured: Shameka Parrish-Wright, Source: Spectrum News 1/Mason Brighton



Shelley Thomas is an associate professor in Elementary, Middle, and Secondary Teacher Education, and two-time UofL graduate (A & S and CEHD). When she returned to UofL after receiving her doctorate from Teachers College, Columbia University, she sought a community of social justice-oriented faculty, and I found that community at the Anne Braden Institute when Dr. Cate Fosl (ABI Founding Director) welcomed her as an affiliate. She is also one of the co-directors of the Cooperative Consortium for Transdisciplinary Social Justice Research, a UofL initiative increasing social justice research, creative activity, and advocacy at the University. Her research explores operationalizing social justice perspectives in teaching and teacher preparation. Currently, she is working on a transdisciplinary team designing and researching equity-centered, trauma-informed teacher preparation.



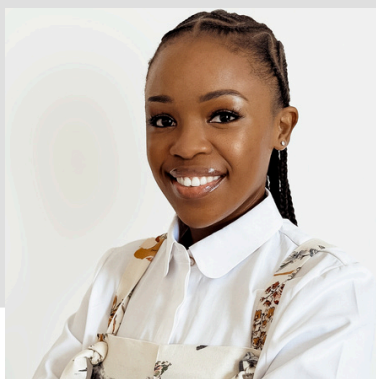
Jasmine Whiteside is an assistant professor in sociology and received her PhD in sociology from The Ohio State University in 2022. Her research explores the decades of unequal access to educational resources and the experiences of students who overcome challenging circumstances to obtain their educational goal. More specifically current projects focus on the educational experiences of first-generation students by highlighting key vulnerabilities (i.e., lack of social integration, financial insecurity, and academic precarity), the influence of racialized experiences in higher education, and the importance of educational resources and sources of support.

MEET OUR TEAM



Sierra Sheard
Graduate Assistant
MA, Applied Philosophy

Sierra Sheard is a first-year master's student studying Applied Philosophy with a concentration in Healthcare Ethics. Her research areas include the racial dimensions of certain affective states, the social determinants of health for Black people and their implications, and the application of Black feminist approaches to bioethics.



Philile Dlamini
Graduate Assistant
MA, Political Science

Philile Dlamini is a second-year master's student in Political Science. She graduated from the University of Pretoria with a bachelor's degree in Political Science and International Relations. Philile's passion for social justice brought her to the ABI along with her experiences at The Nelson Mandela Foundation and CIVICUS: World Alliance for Citizen Participation.



Deme Wharton
Program Coordinator

Deme Wharton is the Anne Braden Institute Program Coordinator. She is passionate about creating community facing opportunities that change the landscape of racial and social justice locally. She is a graduate of the Pennsylvania State University with a bachelor's degree in African American studies and is a graduate of the UofL Master's in Human Resources and Organizational Development program.

Anne Braden Institute Faculty Affiliates

- Aaron Rollins Jr, Associate Professor & Chair of Urban and Public Affairs, Director of Peace, Justice, and Conflict Transformation and Master of Public Administration Programs
- Aishia Brown, Assistant Professor of Health Promotion and Behavioral Sciences
- Amy Clukey, Associate Professor of English and Honors Advisor
- Andrea Olinger, Associate Professor, Director of Composition & Director of the Thomas R. Watson Conference in Rhetoric and Composition
- Anna Browne Ribeiro, Assistant Professor of Anthropology
- Avery Kolers, Professor and Chair of Philosophy & Core Faculty Member of Interdisciplinary MA in Health Care Ethics
- Bronwyn Williams, Professor of English & Endowed Chair of Rhetoric and Composition
- Cara Synder, Assistant Professor of Women's, Gender, and Sexuality Studies & Affiliate Faculty of Latin American and Latino Studies
- Carrie Mott, Assistant Professor of Geography and Geosciences
- Cherie Dawson-Edwards, Vice Provost for Faculty Affairs & Associate Professor of Criminal Justice
- David Anderson, Associate Professor of English
- Dewey Clayton, Professor of Political Science
- Fannie Cox, Associate Professor, Outreach and Reference Librarian, University of Louisville Libraries
- Felicia Jamison, Assistant Professor of History and Comparative Humanities
- Frank Kelderman, Associate Professor of English
- Hilaria Cruz, Assistant Professor of Comparative Humanities & Affiliate Faculty of Latin American and Latino Studies
- Jasmine Whiteside, Assistant Professor of Sociology
- Joy Hart, Professor of Communication, Latin American and Latino Studies Steering Committee
- Kaila Story, Associate Professor of Women's, Gender and Sexuality Studies & Pan-African Studies
- Karen Chandler, Associate Professor of English
- Karl Swinehart, Associate Professor of Comparative Humanities
- Laura Moyer, Associate Professor of Political Science & Affiliate Faculty of Women's, Gender and Sexuality Studies
- Lauren Freeman, Associate Professor of Philosophy, Affiliate Faculty of Women's, Gender, and Sexuality Studies, & Director of the M.A. in Applied Philosophy
- Lauren Heberle, Associate Professor of Sociology, Director of the Center for Environmental Policy and Management
- Lisa Markowitz, Professor of Anthropology
- Lisa Bjorkman, Associate Professor of Urban and Public Affairs
- Mary P Sheridan, Professor of English, Director of the Commonwealth Center for the Humanities and Society
- Melanie Jones Gast, Associate Professor of Sociology
- Michael Brandon McCormack, Chair of Pan-African Studies & Associate Professor of Pan-African Studies and Comparative Humanities
- Pamela Beattie, Chair and Associate Professor of Comparative Humanities
- Rachel Singel, Associate Professor of Fine Arts
- Rebecca Devlin, Assistant Professor of History, Phi Alpha Theta (ΦΑΘ) Director
- Rodger A Payne, Professor of Political Science
- Siddhant Issar, Assistant Professor of Political Science
- Siobhan Smith Jones, Associate Professor of Communications, University Honors Program Executive Director
- Shelley Thomas, Associate Professor & Assistant Department Chair of Social Studies Education
- Sherri Wallace, Professor of Political Science & Associate Dean of A&S International, Equity, and Engagement Programs (IEEP)
- Tracy K'Meyer, Professor of History
- Tyler Fleming, Associate Professor of Pan-African Studies & History
- Yara Mekawi, Assistant Professor of Psychological and Brain Sciences, Head of the Challenging Ongoing Legacies of Racism (COLOR) Lab
- Ying Kit Chan, Professor of Fine Arts, Director of Graduate Studies, Studio Art

Anne Braden Institute Community Council



CO-CHAIRS

Carla Wallace

Carla Wallace has been part of organizing for change for over 40 years. They are co-founder of Showing Up for Racial Justice (known as SURJ) which moves white people—in particular, those who are poor, working-class and rural—to be part of the multiracial struggle for collective liberation. Mentored by southern civil rights activists including Anne Braden, Carla also co-founded Louisville's Fairness Campaign, which has been nationally honored for its work winning LGBTQ equity by centering racial justice and connecting community organizing and electoral work. Carla has been inducted into the Kentucky Civil Rights Hall of Fame.



Shameka Parrish-Wright

Shameka Parrish Wright is Metro Council's District 3 representative including Shively and surrounding West End neighborhoods. She also serves as the executive director of VOCAL-KY, an advocacy group focused on ending mass incarceration, homelessness and the War on Drugs. She has dedicated over 25 years of her life to organizing the community to address the issues around the criminalization of poverty.

Mari Mujica

Mari Mujica, an artist and community advocate with expertise in cultural competency, mindfulness, and leadership. With a PhD in cultural anthropology, Mari's skills are vast including photography, visual art installation, facilitation, diversity consulting, coaching and arts-based workshops. Her community work and advocacy are grounded in feminist theory and inspired by her lifelong dedication to uplifting lived experiences of gender, immigration, and domestic violence through her art.



Anne Braden Institute Community Council

MEMBERS

The ABI CC has welcomed 11 new community council members who are representative of change-makers, community organizers, graduate and undergraduate students, faculty, and staff committed to social justice research and activism. Meet the 2024-2025 council!

Eboni Neal Cochran

Eboni is co-Director of REACT (Rubbertown Emergency ACTION), a grassroots organization of residents living near or at the fence lines of a cluster of chemical facilities commonly referred to as Rubbertown. She has been working with the organization since 2003 educating and working with community members, educating decision makers and pushing for reduced exposure to toxic chemicals.



Amber Duke

Amber is the Executive Director of the ACLU of Kentucky. Amber was program coordinator for the ABI at UofL. She earned an MA from UofL's Pan African Studies Department. She also earned a Graduate Certificate in Public History from UofL's History Department. She has a BS in Communication Studies from NYU.

Sherry Durham

Sherry is the Interim Co-Director of the Muhammad Ali Institute for Peace and Justice at the University of Louisville. A native of West Louisville and a graduate of Central High School, Sherry is a PhD Candidate in the College Student Personnel Program at the UofL. Sherry is a dedicated member of the Cardinal family having worked at UofL for nearly 9 years.

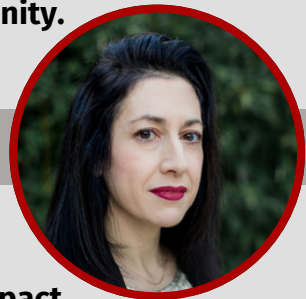


Heather Fox

Heather is a native Louisvillian who comes from a line of Southern Baptist preachers and radio announcers. She is a faculty member in the University of Louisville Archives & Special Collections where she manages the Oral History Center and is a manuscript archivist. She loves working with students, faculty, and the community.

Lauren Freeman

Lauren is a Professor of Philosophy at University of Louisville and Director of the M.A. in Applied Philosophy. She's also an affiliated faculty member in the Department of Women's, Gender, and Sexuality Studies and Anne Braden Institute. She conducts impact driven, interdisciplinary research that aims to understand how members of marginalized groups are oppressed in both obvious and subtle ways within the context of science, medicine, health, and healthcare.



Chad Kamen

Chad Kamen was raised in Louisville where he first learned about community-building through joining food justice organizing across the city. He currently works in the University of Louisville Archives & Special Collections and focuses on outreach and instruction with the library's rare book collections.



Jason Lewis

The Rev. Canon Dr. Jason D. Lewis serves as Canon for Congregational Vitality and Bishop's Liaison to the Racial Healing Commission and Economic Disparities Task Force of the Diocese of Kentucky. Known for his expertise in Appreciative Inquiry, and Asset Based Community Development, he supports communities to leverage assets toward just action and building Beloved Community.

Taylor Martin

Taylor is a political science graduate student at the University of Louisville. She believes in creating positive change through research, advocacy, and education. She collaborates with campus, state, and national organizations to increase voter turnout, raise awareness of social justice issues, and mobilize action for change.



K.A. Owens

K.A. is a veteran community and political organizer. He writes and speaks on a variety of issues and is a longtime radio host. He is a Co-Chair of the Kentucky Alliance Against Racist and Political Repression, a former Chair of Kentuckians For The Commonwealth, and a member of the Leadership Council of the Fairness Campaign. Mr. Owens earned BA and MA degrees from the University of Louisville. He earned an honorable discharge from the Kentucky Air National Guard.

Romith Paily

Romith is a UofL senior majoring in Public Health with three minors. He currently leads UofL's Bollywood Fusion dance team. He researches e-cigarettes' effects on electrophysiology, works at Air Justice, and chairs the library student advisory board—all while preparing for a medical career.



Emma Posey

Emma is a sophomore majoring in Political Science and Pan African Studies. On campus, Emma is a MLK and Porter Scholar, in addition to being involved in Engage Lead Serve Board, Black and Brown Honor Society, and Diversity Student Ambassadors. This summer, Emma started undergraduate research experience while working on the 'Louisville's History of Anti-Apartheid' project led by Dr. Tyler Fleming.

STAY CONNECTED WITH US!

FOLLOW THE ANNE BRADEN INSTITUTE ON SOCIAL MEDIA

@ABIATUOFL



VISIT OUR WEBSITE: WWW.LOUISVILLE.EDU/BRADEN
[CLICK HERE TO SUBSCRIBE TO OUR NEWSLETTER](#)

