

UNIVERSITY OF
LOUISVILLE[®]

**ANNE BRADEN INSTITUTE FOR
SOCIAL JUSTICE RESEARCH**

Opened in 2007 in honor of human rights activist Anne Braden, the Braden Institute bridges the gap between academic research and racial and social justice activism.



Newsletter

Issue No. 6 Fall 2012

“A new massive thrust toward racial justice will not alone solve all the problems that face us, but I am convinced that unless such a thrust develops—one that is global in its outlook—the other problems will not be solved.” --Anne Braden, 1999

Anne Braden Institute Reading Room
258 Ekstrom Library
Open Mon-Thurs. 9-4:30; open until 6pm most Wednesdays; Fridays, evenings, & weekends by appointment.
Call (502) 852-6142 or follow us on Facebook or Twitter
Web address: www.louisville.edu/braden

Robin Kelley to Deliver 6th Braden Lecture on Nov. 8: “Neo-Liberalism and the War on our Youth”



Historian Robin D.G. Kelley will cover topics ranging from incarceration to punitive measures against children of color in public schools, from Trayvon Martin to the Occupy Movement and racism, when he delivers the 6th Annual Anne Braden Memorial Lecture on Thursday, November 8, 2012, 5:30 pm at UofL’s Belknap Playhouse (1911 S. Third Street).

Dr. Kelley is the Gary B. Nash Professor of American History at UCLA. His most recent book is *Africa Speaks, America Answers: Modern Jazz in Revolutionary Times* (Harvard University Press, 2012). He holds a PhD in U.S. History from UCLA, and his wide range of research and teaching interests covers the history of labor and radical movements in the U.S., the African Diaspora, and

Africa; intellectual and cultural history; urban studies, and transnational movements.

In an article that was part of “The Future of Black Politics” forum in the January/February issue of *Boston Review*, Dr. Kelley identified neoliberalism as “a more powerful foe than just about anything we’ve seen before.” He notes that the black freedom movement was an inclusive social justice movement that transformed American democracy and challenged U.S. imperial power abroad, and argues that a “progressive black presence and a core anti-racist critique” are critical to successfully challenging neoliberalism.

According to Jeff Faux, founder and former president of the Economic Policy Institute, and editor of *American Prospect*, neoliberalism is a philosophy “in which competition for wealth is the only recognized value and virtually all social decisions are left to unregulated markets.” In other words, human beings are an expendable resource if money can be made of them. Neoliberalism supports privatization of state-owned enterprises and promotion of the private sector’s role in society.

“In the neoliberal era, privatization, austerity, displacement, layoffs, and union busting have become necessary evils to ‘stimulate the economy,’” Dr. Kelley said in *Boston Review*.

This deference to the welfare of corporations and their profits has far-reaching effects, and we look forward to hearing how Dr. Kelley makes these connections and inspires us to imagine an alternative future.

The lecture is free and open to the public. Public parking is available at meters along Third Street, Cardinal Blvd. and Brandeis Ave., and in the Speed Museum’s parking deck for \$4/car.

The Belknap Playhouse has plenty of space, so please help us spread the word about this dynamic talk. Contact the Braden Institute to request flyers to share with your family, friends, civic organizations and students, or download a flyer from our website, www.louisville.edu/braden.

Healing History Academy Participants Graduate

Don't be surprised if you run into someone around town wearing a lapel pin that says, "Racial Healing Ambassador." The pin bearer is one of 25 graduates of the Healing History Academy. The Healing History Academy (HHA) was a project of the Anne Braden Institute, in partnership with Metro Louisville Dept. of Health & Wellness Center for Health Equity. It was made possible by a 2011/12 racial healing grant from the W.K. Kellogg Foundation.



The HHA brought together Louisvillians of diverse ages, backgrounds and neighborhoods to learn about local and U.S. racial histories of the 20th century and their impact on current social inequalities. Participants took that knowledge into their respective neighborhoods through community-based projects—including a performance on slavery and racial injustice, a teen movie and discussion club, book discussion groups and guided civil rights tours of Louisville. After graduating in a ceremony hosted by Mayor Greg Fischer at Metro Hall in late August, each participant now serves as a Racial Healing Ambassador for Metro Louisville.

You can find a video about HHA from a participant's perspective by visiting our website, www.louisville.edu/braden, and clicking on Healing History. To learn more about the Academy's curriculum or to borrow films or books used in the Academy, contact the Braden Institute at 852-6142.

Fair Housing Research Project Underway

The Louisville Metro Human Relations Commission (LMHRC) has partnered with the Anne Braden Institute (ABI) and Metropolitan Housing Coalition (MHC) to research and produce a 20-Year Action Plan to Affirmatively Further Fair Housing (AFFH) in Louisville Metro. The research is funded by a grant from the U.S. Department of Housing and Urban Development (HUD).

The 20-Year Action Plan will make recommendations and establish goals for a long-term plan to effectively and continuously improve fair housing choice in our community and ensure fair hous-

ing laws are continually emphasized and enforced. Since August, Amber Duke has been conducting oral history research interviews with key fair housing stakeholders in Louisville. The information from the interviews will be contextualized and expanded with document research and contemporary literature produced that is both historical (including, for example, in the open housing movement, as well as AFFH policies employed successfully in other communities, and an analysis of existing Louisville Metro documents, policies and proposals).



A draft of the report will be released November 8 at the 2012 Anne Braden Memorial Lecture. Community input to refine and finalize the plan will take place through the winter and spring. Keep an eye on the ABI listserv for opportunities to add your ideas.

Anne Braden: Southern Patriot Premieres to Standing-Room-Only Crowd, Kicks Off Exhibit

More than 350 people packed the Kentucky Center for African American Heritage on Sunday, August 26, for the Louisville premier of *Anne Braden: Southern Patriot*. The film is a first-person documentary about Anne's extraordinary life as a civil rights leader and southern white woman who mentored three generations of social activists before her death in 2006.

Anne Braden Southern PATRIOT

Response to the film has been tremendous, with several patrons purchasing DVDs immediately after the show and more requesting information about additional screenings.

The film premier kicked off a week of events surrounding "Americans Who Tell The Truth: Visions of Justice and Compassion," a new exhibit at the Muhammad Ali Center on display through November 11. Artist Robert Shetterly painted portraits of 40 historical and contemporary Americans, including Anne Braden (below), who are exemplary models of courage and citizenship. The exhibit also features quotes by these leaders.

On Tuesday, August 28, Louisville Mayor Greg Fischer unveiled Shetterly's portrait of Anne in Metro Hall. A private opening reception for the exhibit was held at the Ali Center on August 30. The Ali Center exhibit is the first time the portrait of Braden has been exhibited.



Portrait of Anne Braden by Robert Shetterly

DIRECTOR'S CORNER



This director's note is short and sweet. In April we celebrated a landmark 5-year anniversary of our reading room in Ekstrom Library. In those years, we have come a long way toward greater visibility and toward enacting our purpose: to advance public understanding of the U.S. civil rights movement, both its powerful history and its unfinished agenda of racial and social justice.

Our 6-month-long Healing History Academy—funded by the Kellogg Foundation and completed with the help of the Center for Health Equity (CHE)—was a milestone in that direction. The participants were simply amazing! Our sessions brought anguish, laughter, poetry, even tears. It was hugely rewarding to me to feel that we helped to enlist 25 dynamic new Louisvillians in the work of creating what Anne Braden always described as an anti-racist majority--so needed if true racial healing is to occur.

We continue to have support from our College of Arts and Sciences Dean's office, for which we are tremendously grateful. Our Community Advisory Council is expanding, and we have stupendous support from our co-chairs Mari Mujica and

Carla Wallace. Once quiet and underpopulated, our reading room is most days abuzz with activity. Amber and I are jazzed to tackle the 20-year fair housing plan research described elsewhere in this newsletter.

But we still have a long way to go! We need more students, more capacity, more research publications, more volunteers, and more synchronicity with a wider range of campus and community organizations from locally to globally. We thank each of you for all you have done to support the ABI so far, and we invite you to deepen and expand your involvement with our work. See you November 8 if not before!

--Cate Fosl

Civil Rights Tour Brochure Revised and Re-Released!

We will release a revised version of our brochure, "A Self-Guided Tour of Louisville's Civil Rights History," this fall. We have again partnered with Louisville Convention & Visitors Bureau, the Muhammad Ali Center, Kentucky Center for African American Heritage and University of Louisville Arts & Culture Partnership to produce and distribute the brochure.

Since its first printing in 2009, we've added four sites: The Pendennis Club, the Open Accommodations Mass Protests marker on 4th Street, Freedom Park at UofL and A.D. Porter & Sons Funeral

Home. Additionally, Rev. Louis Coleman Jr. Drive, the portion of 34th Street named in his honor in 2011, replaced the community center at First Congregational Church. We've changed the route to accommodate the additions and included a map of a 30-minute walking tour for sites in downtown Louisville. Other changes include QR codes, one of which will link to a virtual visitors log for those who wish to leave comments. Individuals or groups interested in a tour can pick up brochures from any of the partners.



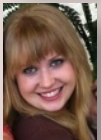
Many thanks to Mariam Williams, who joined our staff in Feb. as interim program coordinator and who has stayed on this fall as publicity associate. Mariam is a local writer whose work you may see in the pages of the Courier-Journal or at redboneafropuff.com. She coordinated the tour brochure revision and the Braden film premier, and was also co-editor of this newsletter.

The University of Louisville is an equal opportunity institution and does not discriminate against persons on the basis of race, age, religion, sex, disability, color, sexual orientation, national origin or veteran status.

New ABI Student Team: Bios & Favorite Quotes



Alisha West (2011-present) is a Graduate Assistant in the ABI and a second-year graduate student in Women's and Gender Studies. She received her undergraduate degree in English from Gonzaga University in Spokane, WA, and hopes to work for a non-profit women's and social justice organization upon finishing her M.A. "The most common way people give up their power is by thinking they don't have any." -Alice Walker



Rachel Spears (August 2012 - present) is a first-year student in the Pan-African Studies MA program and a Graduate Assistant for the ABI. She received her B.S. in Communication from Missouri State University. Rachel is excited to become a part of the Anne Braden Institute and hopes that her work there is an asset to both the University of Louisville and the Louisville community. "Education is the most powerful weapon which you can use to change the world." - Nelson Mandela



Amina Ahmed is a graduate of Central High School and an undergraduate work-study student in her 3rd year at the ABI. Amina is majoring in nursing and minoring in Pan-African Studies. "Those who do not remember the past are condemned to repeat it." - George Santayan



Katy Campbell is a graduate of the Academy for Individual Excellence and a freshman at UofL. She plans to major in Music Therapy. Katy is excited about her work study assignment at the ABI because social justice and peace are important to her. She came to us after researching an award-winning history project on Anne Braden in high school. "In every age, no matter how cruel the oppression carried on by those in power, there have been those who struggled for a different world. I believe this is the genius of humankind, the thing that makes us half divine: the fact that some human beings can envision a world that has never existed." - Anne Braden

ABI Community Council

- Khalilah Collins
- Keneka Cheatham (staff rep)
- Judi Jennings
- Mari Mujica (co-chair)
- David Owen (faculty rep)
- Mimi Pickering (regional rep)
- Carla Wallace (co-chair)

ABI Affiliated Faculty

- J. Blaine Hudson, Dean, College of Arts & Sciences
- Tomarra Adams, assistant professor of Pan-African Studies
- David Anderson, associate professor of English
- Rhonda Buchanan, director, Latin American and Latino Studies / professor of Spanish
- Delinda Buie, professor, rare books curator, University Libraries*
- Nefertiti Burton, associate dean of A&S Diversity, Community Outreach and International Programs; associate professor of Theatre Arts
- Thomas Byers, professor of English
- John Cumbler, professor of History
- Margaret D'Silva, professor of Communication
- Joy Hart, professor of Communication
- Lauren Heberle, assistant professor of Sociology
- Katherine Burger Johnson, associate professor, University Archives and Records Center*
- Ricky Jones, associate professor of Pan-African Studies
- Tracy K'Meyer, professor and chair of History
- Avery Kolers, associate professor of Philosophy
- Lisa Markowitz, associate professor and chair of Anthropology
- Rodger A. Payne, assistant professor of Political Science
- Theresa Rajack-Talley, associate professor and chair of Pan-African Studies
- Susanna Remold, associate professor of Biology
- Kaila Story, assistant professor of Women's and Gender Studies / Pan-African Studies and Audre Lorde chair
- Nancy Theriot, professor and chair of Women's & Gender Studies
- Shelley Thomas, assistant professor of Social Studies Education*
- Russ Vandenbroucke, professor of Theatre Arts

*=ex-officio

Please Consider a Tax-Deductible Gift to Support Social Justice Research at the University of Louisville:

Yes, I want to contribute to the Braden Institute. My check is enclosed in the amount of _____.

Yes, I want to contribute to the Braden Institute. Please phone me at _____ to make arrangements for my credit card donation.

Yes, I want to help and stay informed. Please add me to your list-serv. My email is _____.

Yes, I want to help by volunteering.

Please call me at _____.

Make your gift to the University of Louisville Foundation, earmarked for the Anne Braden Institute--G1745. All donations are tax-deductible. Please clip & return to: Anne Braden Institute for Social Justice Research, College of Arts and Sciences, 258 Ekstrom Library, University of Louisville, KY 40292.

Thank you for your support!