

THE SUBVERSIVE

ANNE BRADEN INSTITUTE FOR SOCIAL JUSTICE RESEARCH



DR. BETH RICHIE

The ABI is thrilled to announce Dr. Beth Richie as our speaker for the 19th Annual Anne Braden Memorial Lecture this fall on the topic of “Abolition Feminism and Anti-Racist Praxis: Reflections on Black feminist research, anti-violence activism, and the possibilities of freedom.”

Dr. Richie’s extensive research examines how race and gender impact experiences of criminalization and justice, and she has long collaborated closely with communities, impacted individuals, and movements, including as a founding member of INCITE!: Women of Color Against Violence. She is Distinguished Professor of Criminology, Law, and Justice and of Black Studies at the University of Illinois at Chicago, author of *Arrested Justice: Black Women, Violence, and America’s Prison Nation*; co-editor with teachers from Stateville Prison of *The Long Term: Resisting Life Sentences, Working Toward Freedom*; and co-author with Angela Y. Davis, Gina Dent, and Erica Meiners of *Abolition. Feminism. Now.*

Watch for registration information soon!

Fall Events Calendar

Learn more inside about each event!

SEPT. 11

Air Justice Translation Workshop

6:00-8:00 PM, 3146 W. Broadway

SEPT. 17

Health Care Ethics Series Speaker: Erica Salter*

12:00-1:00, MS Teams

SEPT. 29

Liberal Studies Visiting Scholar: Brady Heiner*

4:00 PM, Chao Auditorium, Ekstrom Library

OCT. 3

CCTSJR Small Grant Applications Due

OCT. 8

Research Panel: “Voices from Students Against Apartheid South Africa”

6:00-7:30 PM, Chao Auditorium, Ekstrom Library

OCT. 14

Research Talk: “Housing, Utility Costs, and Climate Justice in Louisville: Applied Research on Rising Risks”

12:00-1:00 PM, MS Teams

OCT. 15

Health Care Ethics Series Speaker: Joseph Millim*

12:00-1:00, MS Teams

OCT. 16

Author Talk: “Motown and the Making of Working Class Revolutionaries” *

6-8 PM, Carl Braden Center, 3208 W Broadway

OCT. 17

Authors Jerome Scott & Dr. Walda Fish-Katzman in conversation

10:00-11:00 AM, ABI Offices, Ekstrom Library

OCT. 21-22

Raise Some L, UofL annual fundraising campaign

OCT. 27

Bluegrass Coalition for Higher Ed in Prison Conference*

10:00 AM - 2:30 PM, UofL Shelby Campus

NOV. 13

**19th Annual Anne Braden Memorial Lecture
Dr. Beth Richie**

“Abolition Feminism and Anti-Racist Praxis”

6:00-7:30 PM, Strickler Hall 101/Middleton Auditorium

NOV. 14

Research Meets Activism Breakfast

9:00-11:00 AM, Location TBD

*** = ABI CO-SPONSORED OR
PARTNER EVENT**

Opened in 2007 in honor of human rights activist and journalist Anne Braden, the ABI bridges the gap between academic research and activism for racial and social justice.

LETTER FROM THE DIRECTOR

Dear friends of the ABI,

What is research for social justice? To me, it is work we do *together*, whether using community engaged and participatory methodologies, or drawing from theoretical frameworks centering lived expertise. ABI's core mission to support research for social justice means that what we do is grounded firmly in forms of togetherness. This is why my work over the past year has emphasized the rebuilding of our Community Council, the expansion and engagement of faculty affiliates, an emphasis on a wide set of events and projects, and new links to students.



Angela Storey, ABI Director

Doing work together is hard. It is laborious, lengthy, and even frustrating, because it requires the patient creation of relationships of trust and interdependence through time. It feels like we need these forms of connection ever more. I hope that you will join us at events or on projects this year that offer ways to connect, forge relationships of trust, and build modes of togetherness. These connections give me hope. They are worth the work.

The past year has been busy. Last academic year the ABI hosted 19 events and supported 18 more, collaborated with 28 campus and 14 community partners, and brought people together in scales spanning from small reading circles to full auditoriums. We honored what would have been Anne's 100th birthday and marked the 70th anniversary of the Wade-Braden case. We centered our mission by leading research, supporting faculty and student research, and highlighting local and national research. The ABI also moved to be part of the College of Arts and Sciences' Research Office, further emphasizing our scholarly mission.

It has been a challenging year logistically, though, as the UofL has not allowed me to rehire our program coordinator. I do have a great graduate assistant, Lily Briar, joining the ABI for this year through the support of the college, but we will be stretched thin making do without full-time staff. I hope it will be understandable that we will have very reduced opening hours for our reading room, fewer outreach messages, and will take longer replying to inquiries.

We do have a full fall ahead of us, with a wonderful speaker in Dr. Richie for our 19th Annual Anne Braden Memorial Lecture, many other upcoming events, and a grants program we are coordinating with the Cooperative Consortium for Transdisciplinary Social Justice Research. I hope to see you in one or all of these spaces to gather and connect!

Last year I revisited Anne's book, "The Wall Between," with the reading group led by Cate Fosl. Early in the text, Anne writes about Andrew Wade's initial approach to ask the Bradens to purchase a home on his family's behalf, noting they knew each other only generally through shared spaces of change-making. She writes of Andrew: "he came to us with the chance and with the hope that we meant the things we said." Let us continue to recognize in each other and in our work what Andrew hoped for in Anne and Carl, that we mean what we say, and to forge new forms of togetherness and collaboration.

Dr. Angela Storey, ABI Director

ABI RESEARCH NEWS

Air Justice

The Air Justice project has for several years supported residents in engaging more closely with processes governing air pollution, expanded community-based data collection, and collaborated with organizations across West Louisville impacted by air pollution around the industrial area known as “Rubbertown.” Learn more about Air Justice at the [project website](#).

This summer, the project released their report “Sensing Air Justice.” This report outlines the science and health effects of some of the most pressing air quality concerns in Louisville. The report also presents data gathered by residents who worked with scientists and academic researchers to produce strategies for building trust, increasing transparency, and working together to reduce air pollution and improve environmental health in Louisville.

Check our Fall events listings for information about a legal notice translation workshop to be held in September as part of this research.



Uncovering Louisville’s History of Anti-Apartheid Activism



For the second summer, a Summer Research Opportunity student fellow worked alongside ABI Faculty Affiliate Dr. Tyler Fleming to continue exploring archival documentation of anti-apartheid activism in Louisville in the 1970s and 80s. Ben Coyle, a History major, spent the summer working with Dr. Fleming to uncover documentation of this activism in archives across the city. As Coyle said in UofL coverage of the project, “Louisville has a rich history of activism, and it encourages people to continue to have that voice fighting against injustices and to continue to be activists, and that is what I thought was really important.” Read about Ben’s research in [this UofL news piece](#).

Check our Fall listings for details for an October panel with faculty and students from this research in conversation with activists involved in the 1980s divestment campaigns.

RESEARCH FUNDING: Consortium Small Grants

This year, the ABI will be administering a final round of small grants for the Cooperative Consortium for Transdisciplinary Social Justice Research. This funding is available to research teams led by UofL faculty for the initiation or completion of transdisciplinary social justice research or creative activity that is community-engaged. Transdisciplinarity as defined by the Consortium consists of the participation of faculty from more than one UofL College or School, or from more than two departments from within any one College or School, as well as a community partner or the development of a community partner relationship. Projects involving student researchers, incorporating the arts or humanities, and those that have received limited previous funding will be prioritized.

Grants will be made up to \$6,000 and must be used for research to take place in Spring 2026. Applications are due Oct. 3. The call for proposals can be found [on the ABI website](#).



Upcoming ABI Events: 2025 fall Calendar

**Sept. 11
6-8 PM**

Air Justice Translation Workshop, 3146 W Broadway

In this interactive workshop, Dr. Megan Poole of the Air Justice Project and Byron Gary, an environmental lawyer from Kentucky Resources Council, will work with members of Rubbertown Emergency Action (REACT) to translate air pollution public notices into readable, accessible slides for social media. This workshop is open to anyone interested in learning how to translate complicated scientific and legal jargon into everyday language for public audiences.

Research Panel: Voices from Students Against Apartheid South Africa Chao Auditorium, Ekstrom Library

To mark the 40th anniversary of the UofL Board of Trustees' vote to divest from companies doing business with apartheid South Africa, this panel will highlight the experiences and reflections of activists involved with Students Against Apartheid – the group that led the divestment campaign on campus in the 1980s. Panelists will be in conversation with faculty and student researchers who have been collecting archival material and oral histories about anti-apartheid activism in Louisville in the 1970s and 80s.

**Oct. 8
6-8 PM**

**Oct. 14
12-1 PM**

Research Talk: Housing, Utility Costs, and Climate Justice in Louisville: Applied Research on Rising Risks, MS Teams

Join us for this joint talk presenting local research on the rising risks to housing, utility costs, and everyday life from climate change. Dr. Nathaniel O'Grady, Assistant Professor in Human Geography and Disasters at the University of Manchester, researches lived experiences of climate-related disasters and their entanglement in urban planning processes. Sarah Pierce, the Housing and Energy Affordability Program Coordinator at the Metropolitan Housing Coalition, oversees MHC's EveryHome program, which builds bridges between affordable housing and utilities.

Author Event: Motown and the Making of Working Class Revolutionaries ABI Offices, Ekstrom Library

Join us for coffee and pastries at the ABI offices in one of two events with authors Jerome Scott and Dr. Walda Fish-Katzman for their new book "Motown and The Making of Working-Class Revolutionaries: The Story of the League of Revolutionary Black Workers." Join us for a discussion of the book's oral history work, the League's historic impact, and a book signing by the authors. Read more about the book and its authors on the next page!

**Oct. 17
10-11 AM**

**Nov. 13
6-7:30 PM**

19th Annual Anne Braden Memorial Lecture: "Abolition Feminism and Anti-Racist Praxis" by Dr. Beth Richie Middleton Auditorium, Strickler Hall Research Meets Activism Breakfast, Location TBD

**Nov. 14
9-11 AM**

Join us for this pair of events featuring Dr. Beth Richie, our 19th Annual Anne Braden Memorial speaker! On the evening of Thursday Nov. 13, Dr. Richie will deliver the annual lecture on the UofL campus (see cover for details). On the morning of Friday Nov. 14, she will be in conversation with a panel of community members and scholars engaged in work on related topics. Watch for more details and RSVP information coming soon!

Upcoming co-sponsored & partner events

**Sept. 29
4 PM**

Liberal Studies Visiting Scholar Lecture

Reimagining Public Safety: Transforming Public Universities into Pathways of Reintegration and Repair, *Chao Auditorium, Ekstrom Library*

In this public lecture, philosopher and higher education leader Dr. Brady Heiner argues that public universities must be reimagined as civic infrastructures of care, accountability, and belonging. Drawing on his experience building and scaling programs that support thousands of formerly incarcerated students across 18 campuses in the California State University system, Heiner outlines how universities can repair social dislocation, reduce incarceration, and rebuild communities harmed by punitive and extractive systems.

Health Care Ethics Speaker Series

Sept 17 – Child Participation in Decision-Making: From Adult-Centered to Child-Centered Models, *MS Teams* – [register here](#)

Oct 15 – Medical Decision-Making for Minors: Two Puzzles, *MS Teams* – [register here](#)

The year's Health Care Ethics series surveys the complex ethical terrain of children's autonomy in health care. Talks will consider what meaningful child and adolescent participation in health care decision-making looks like; cases where decisions made on children's behalf might not align with children's preferences and values, and how to balance the child's best interests with parental authority; the importance of good communication between providers, patients, and parent caregivers, and the dangers that result when communication breaks down; what to do when families aren't given all the tools to decide how to live when time is limited; and how to enable children to understand the stakes and participate in decision-making. Continuing Medical Education will be offered.

**Sept. 17
12-1 PM**

**Oct. 15
12-1 PM**

**Oct. 16
6-8 PM**

Author Talk: Motown and the Making of Working Class Revolutionaries *Carl Braden Center, 3208 W Broadway*

Join us for a discussion and book signing by Jerome Scott and Dr. Walda Fish-Katzman for their new book "Motown and The Making of Working-Class Revolutionaries: The Story of the League of Revolutionary Black Workers." For the first time, we get to hear directly from the workers themselves through oral history, exploring their Southern roots, powerful campaigns, and commitment to becoming "working-class intellectuals." Through hearing about the history of the League of Revolutionary Black Workers and engaging in political discussion with Jerome and Walda, we will apply these lessons to today's struggle.

Conference: Bluegrass Coalition for Higher Education in Prison *UofL Shelby Campus*

Join prison education participants, practitioners, advocates, and allies for the first convening of the Bluegrass Coalition for Higher Education in Prison (BCHEP). Hosted by the University of Louisville's Cardinal Access to Restorative Education (CARE) Initiative and UofL SOARS (Student Opportunities for Academic and Reentry Success) with generous support from the Laughing Gull Foundation, the conference will be an opportunity for networking, information sharing, and coalition building. Anyone with an interest in this work is welcome to [register](#) at no cost. Learn more at: <https://events.louisville.edu/event/bchep-inaugural-conference>

**Oct. 27
10 AM -
2:30 PM**

ABI FACULTY AFFILIATE SPOTLIGHT



Dr. Siobhan Smith-Jones is the Executive Director of the University Honors Program and Professor in the Department of Communication. She graduated from Xavier University of Louisiana with a B.A. in Mass Communications and received her Masters of Mass Communication at Louisiana State University. Her PhD was completed at the University of Missouri in Communication, specifically Media Studies. Dr. Smith-Jones has taught many courses in the UofL's Department of Communication, including African Americans in the Media, Television Criticism, and, currently, 'Beyond Beyonce': Communication of an Icon. She has also taught at Quality Leadership University in Panama. Her research interests include exploring Black TV horror shows and movies, examining how Black people are represented in these media, and how that representation is received by primarily Black audiences. She received an Ascending Star Fellowship last academic year and will continue to work closely with her program mentor, Dr. Lorna Jowett. Dr. Smith-Jones would like to highlight how proud she is of her Honors students, staff, and faculty. She also wants to give a special shout out to ABI's new Graduate Assistant, Lily Briar, for their work with the National and International Scholarships Program last year.



Dr. Cara Snyder is an Associate Professor in the Women's, Gender, and Sexuality Department. They studied Economics and International Relations and Spanish at Agnes Scott College and, upon graduation, worked at the Carter Center in the Americas Program. During this time, she received a Fulbright scholarship to Brazil, where they discovered a passion for discussing gender and power through sports as well as working with students at a university. Snyder went on to earn an MA and PhD at the University of Maryland in the Harriet Tubman Department of Women's, Gender, and Sexuality Studies. At UofL their position specializes in Transnational Feminism and Digital Studies. On campus Dr. Snyder is an active member of United Campus Workers and works closely with CARE, Cardinal Access to Restorative Education. She is currently completing a book titled "Which Team Are You On: Visibility, Gender Dissidence, and the Right to Brazilian Futebol," under advanced contract with the University of Texas Press. She collaborates with feminist scholars in Latin America for her research as well as with the local organization Sweet Evening Breeze, a resource center for LGBTQ+ youth experiencing homelessness. She also actively works to foster community engagement for students her classes.

MEET OUR TEAM

Lily Briar

**ABI Graduate Assistant
MA, Anthropology**



Lily Briar is a second-year master's student in Anthropology. They graduated from Murray State University in 2024 with a B.S. in English/Creative Writing and a minor in Linguistics. Their research interests include social justice and women's rights, with a focus on how children are affected by these topics. Currently, they are volunteering at the Center for Women & Families where they engage with shelter residents and collaborate with staff members to create engaging group activities for the children in shelter. Lily hopes to continue to find more ways to engage with the community.

2024-2025 ABI EVENT HIGHLIGHTS - Fall '24

Graduate Student Events

The ABI organized two grad student-faculty events in the fall, the first an open house in August, and the second a networking event in October to highlight courses across the university related to social justice and community engaged research. Both events gave graduate students the opportunity to make connections with faculty from other departments.



Anne's 100th Birthday & 70th Anniversary of the Wade-Braden Case



2024 marked Anne's 100th birthday and the 70th anniversary of the Wade-Braden Case. In July, ABI co-sponsored a wonderful event at the Carl Braden Center that brought the community together to remember and highlight Anne's legacy of activism and engagement in Louisville. In October, a campus-community reading group worked through Anne's memoir, "The Wall Between." This group met three times and was led by ABI founding director and Anne's biographer, Dr. Cate Fosl (at right end in top photo, with some reading group participants).



In October, to mark the sedition arrests, the ABI conducted campus outreach to engage students and faculty alongside posters summarizing the Wade-Braden case's historic context and impacts. We also collaborated with the Speed Museum Cinema and several community and campus partners on a well-attended showing of the local film "The Other America" about the case and Anne's life. A panel following the film included (bottom photo, from left): ACLU-KY Executive Director Amber Duke, director Isaac Fosl-van Wyke, Squallis Puppeteers Executive Director Nora Christiansen, great-nephew of the Wades Steven Ebbs, and Dr. Cate Fosl.

18th Annual Anne Braden Memorial Lecture

In November, six events over two days featured our 18th annual memorial speaker, Professor Andrea Armstrong, a MacArthur 'genius grant' winner and legal scholar at Loyola University New Orleans. Prof. Armstrong's lecture, entitled "Civil Rights Behind Bars," examined her community-engaged scholarship on deaths behind bars. ABI affiliated faculty, Vice Provost, and past ABI Interim Director Dr. Cheri Dawson-Edwards and ABI Community Council co-chair Carla Wallace coordinated a talk-back session.

The next day at the Research Meets Activism Breakfast, a wonderful panel of community activists and scholars working locally on incarceration and civil rights spoke about their work with Prof. Armstrong to a packed room. Other events included a networking lunch for students and staff interested in research related to incarceration; a reception for ABI supporters; a lunch with community members; and a tour of the Louisville Metro Detention Center.

Thanks to Shachaf Polakow & Kira Meador (ACLU-KY) for these photos!



2024-2025 ABI EVENT HIGHLIGHTS - Spring '25

Dr. Bertin Louis invited talk

In April, ABI hosted University of Kentucky faculty member Prof. Bertin Louis. He spoke about anti-Haitian bias and Haitian migrant religious practice, drawing from his interdisciplinary research in the Caribbean.



Annual Service for Anne Braden



To mark the anniversary of Anne Braden's death, the Episcopal Diocese of Kentucky holds an annual service each March that honors her life and work. This year the ABI co-hosted this event on campus, with the diocese bringing a delegation to the ABI offices and students from the interfaith center joining as well to learn about ABI's work, followed by a service at the interfaith center.

Midwest Pages to Prisoners Event

In partnership with Bloomington-based group Midwest Pages to Prisoners, a packed room of volunteers wrapped up packages of books to send to inmates in multiple states and wrote letters in response to book requests. Faculty, students, staff, and community members attended this event, with support from CCHS.



2025 ABI Student Social Justice Paper and Multimedia Prize Winners

Our annual ABI awards showcase exceptional work by UofL students. The joint winners of this year's graduate paper prizes were Joy Adeleye for "From Japa to Japada: Media Myths and the Realities of Nigerian Migrants and Returnees" and Meg Powers for "'I Am the Very Opposite of Racist': A Mixed-Methods Examination of the White Fragility Response." Joy (below, on left) is a PhD student in Urban and Public Affairs and Meg (second from left) is a Clinical Psychology PhD Student in Psychological and Brain Sciences, both in the College of Arts & Sciences. Honorable mentions went to Daniel Bullman (Kent School) and Benjamin Botkin (A&S, History).

This year's undergraduate paper prize went to Emily Ravenscraft (third from left) for "Reimagining the Canon: Inclusive Programming & the American Orchestra." Emily completed an Individualized Major in Inclusive Cultural Leadership within the College of Arts & Sciences. ABI partnered with the Delphi Center's Cards Create Showcase to select an ABI Social Justice Multimedia prize. The winner was a collaborative project from students in the College of Business, including Carla Almaguer (Business Administration, fourth from left), Innocent Ntwali (Business Administration, fifth from left), Justin Gilbert (right), and a peer, on the topic of "Implicit Bias in Hiring and Recruitment." Read [more here](#) about our winners and congratulations again to each of them!



Anne Braden Institute Community Council



The ABI Community Council includes campus and community representatives who support the work of the institute. We are so grateful that many of the new council members who joined in 2024 will continue this year, as will our wonderful co-chairs. We also want to say congrats and thanks to our now graduated former student rep, Taylor Martin, and congratulate continuing student rep Romith Pailey, who graduated in May and matriculated into UofL's Medical School this summer!

Co-Chairs



Carla Wallace



Mari Mujica



Shameka Parrish-Wright

Council Members



Eboni Neal Cochran



Chad Kamen

Amber Duke



Jason Lewis



Sherry Durham

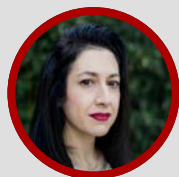


K.A. Owens

Heather Fox



Romith Paily



Lauren Freeman



Emma Posey

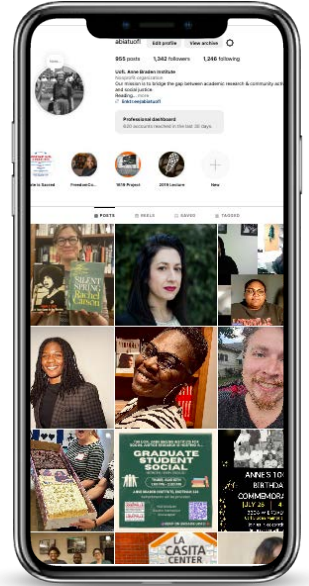
Anne Braden Institute Faculty Affiliates

David Anderson, Associate Professor of English
Pamela Beattie, Chair and Associate Professor of Interdisciplinary and Public Humanities
Lisa Bjorkman, Associate Professor of Urban and Public Affairs
Aishia Brown, Associate Professor of Health Promotion and Behavioral Sciences
Anna Browne Ribeiro, Associate Professor of Anthropology
Eve Carlisle Polley, Assistant Professor of Philosophy and Women's, Gender, and Sexuality Studies
Ying Kit Chan, Professor of Fine Arts
Karen Chandler, Chair and Professor of English
Dewey Clayton, Professor of Political Science
Amy Clukey, Associate Professor of English
Fannie Cox, Professor, Outreach and Reference Librarian, University of Louisville Libraries
Hilaria Cruz, Associate Professor of Interdisciplinary and Public Humanities
Cherie Dawson-Edwards, Vice Provost for Faculty Affairs and Professor of Criminal Justice
Natasha DeJarnett, Assistant Professor of Environmental Medicine
Rebecca Devlin, Assistant Professor of History
Lauren Freeman, Professor of Philosophy
Tyler Fleming, Associate Professor of Pan-African Studies & History
Melanie Jones Gast, Associate Professor of Sociology
Joy Hart, Professor of Communication
Lauren Heberle, Chair and Professor of Sociology, Director of the Center for Environmental Policy and Management
Siddhant Issar, Assistant Professor of Political Science
Felicia Jamison, Assistant Professor of History and Interdisciplinary and Public Humanities
Frank Kelderman, Associate Professor of English
Tracy K'Meyer, Professor of History
Avery Kolers, Professor and Chair of Philosophy
Lisa Markowitz, Professor of Anthropology
Michael Brandon McCormack, Chair of Pan-African Studies and Professor of Pan-African Studies and Interdisciplinary and Public Humanities
Yara Mekawi, Assistant Professor of Psychological and Brain Sciences
Carrie Mott, Associate Professor of Geography and Environmental Sciences
Laura Moyer, Associate Professor of Political Science
Andrea Olinger, Associate Professor of English, Director of Composition and of the Thomas R. Watson Conference in Rhetoric and Composition
Rodger Payne, Professor of Political Science
Aaron Rollins Jr, Professor & Chair of Urban and Public Affairs, Director of Peace, Justice, and Conflict Transformation Program
Mary P Sheridan, Professor of English, Director of the Commonwealth Center for the Humanities and Society
Rachel Singel, Associate Professor of Fine Arts
Siobhan Smith Jones, Professor of Communications, University Honors Program Executive Director
Angela Storey, Associate Professor of Anthropology & Director of the ABI
Kaila Story, Professor of Women's, Gender and Sexuality Studies and Pan-African Studies
Karl Swinehart, Associate Professor of Interdisciplinary and Public Humanities
Cara Synder, Associate Professor of Women's, Gender, and Sexuality Studies
Shelley Thomas, Associate Professor of Social Studies Education
Sherri Wallace, Professor of Political Science and Associate Dean of International, Access, and Engagement Programs
Jasmine Whiteside, Assistant Professor of Sociology
Bronwyn Williams, Professor of English & Endowed Chair of Rhetoric and Composition

STAY CONNECTED WITH US!

**FOLLOW THE
ANNE BRADEN INSTITUTE
ON SOCIAL MEDIA
@ABIATUOFL**

Engage UofL  



**WATCH FOR A NEW WEBSITE SOON!
WWW.LOUISVILLE.EDU/BRADEN**

GIVING TO THE ANNE BRADEN INSTITUTE

The ABI relies entirely upon the incredible generosity of our donors. Your support allows us to run workshops for students, support and highlight engaged research by our faculty affiliates, offer programming for the campus and community, and do so much more!

Donation Link: uofl.me/abigive - give today!

If you would like to support the ABI during UofL's Day of Giving, "Raise Some L," which will take place on October 21-22, 2025, contact us to learn how to become an official *Advocate* to help us reach our fundraising goal. Please email uoflabi@louisville.edu with the subject line 'Raise Some L Advocate'.

You can also plan to support us by donating on those days! Watch for reminders and donation information this fall about Raise Some L - or give at a time that works for you!

