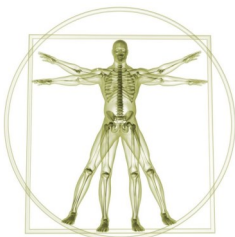




**SUMMER
2015**



Individualized Instruction *

May 11 — August 11

401-01 Co-op Internship: Anthropology
450-01 Readings & Research
451-01 Independent Study
672-01 Thesis : Grad
673-01 Internship : Grad

**These courses require instructor permission.*



UNIVERSITY
OF
LOUISVILLE

Department of Anthropology
228 Lutz Hall
Louisville, KY 40292

Phone (502) 852-6864
Fax (502) 852-4560

ANTHROPOLOGY

TERM 1 *May 11 — June 1*

INTRO TO CULTURAL ANTHROPOLOGY: ANTH 201

1710-201-10 ZHAO MTWThF 9:30—12:30pm LU 232

This course introduces cultural anthropology and surveys its fundamental questions, concepts, methods, and data. The overall question it seeks to answer: what does it mean to be human? To answer this question and many related ones involves learning concepts such as culture, cultural relativism, universalism, evolution, race, gender, and class. The course explores the ways cultural anthropologists develop their research questions and the methods and data they use to answer them. (*GEN ED SB CD2*)

INTRO TO ARCHAEOLOGY: ANTH 204

1933-204-50 DIBLASI *Distance Education*

From Heinrich Schliemann's discovery of Troy to Lara Croft's adventures, archaeology has sparked the imagination of people over the world. Archaeology enhances people's lives and society through the many great discoveries about the human past. This course introduces students to the discipline of archaeology and seeks to explain the processes through which archaeologists investigate the past. We will cover the kinds of questions archaeologists ask, how we design and execute research, and how we analyze archaeological materials and data. In this course we will examine a diverse range of topics, present case studies from around the world and give students the tools to critically evaluate many ideas about the past. (*GEN ED SB CD1*) *Distance Ed.

FOOD AND BODY POLITIC: ANTH 352

2782-352-10 MARKOWITZ MTWThF 1:00—4:00pm LU 232

A holistic, anthropological approach to food. Via readings, lectures, films and field trips, we explore food and food-ways as products of soil, culture, and politics. Food offers a window into micro-level social relations – family life, gender, and workplaces – as well as into global economies

EVOLUTIONARY ANTHROPOLOGY: ANTH 353

2789-353-10 TILLQUIST MTWThF 1:00—4:00pm DA 104

An evolutionary anthropologist works to understand human biology and genetics using the framework of evolutionary theory to test explicit hypotheses regarding human variation. This course will review basic evolutionary theory and provide an introduction to the field of evolutionary anthropology. Special emphasis will be placed on the importance of hypothesis testing and learning how to detect just-so-stories.

TERM 2 *June 20—July 31*

FIELD METHODS IN ARCHAEOLOGY: ANTH 377-96

2785-377-96 HAWS Off Campus

This is a 6 credit hour course. The class takes place abroad in Portugal where students will participate in archaeological excavation at the cave site, Lapa do Picareiro. This cave contains deposits dated to the Iron Age, Bronze Age, Neolithic, Upper Paleolithic and Middle Paleolithic. The course will focus on the Upper and Middle Paleolithic deposits, addressing the problem of Neanderthal extinction and replacement by anatomically modern humans. *This course provides training in field methods that Archaeologists use to study the archaeological record. Students will learn the practice of archaeology emphasizing methods of survey, excavation, and analysis used to investigate the past. In addition, students will learn basic techniques in artifact recovery and identification

TERM 3 *July 8—August 11—No class scheduled*

TEN Week Term *June 2 - August 11—No class scheduled*