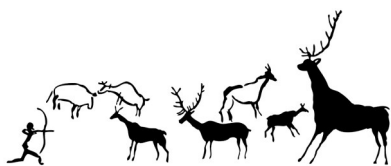
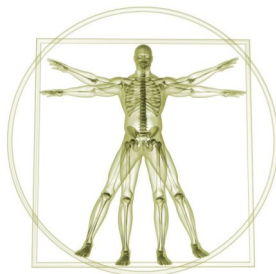




Spring 2023
COURSES



Department of Anthropology
228 Lutz Hall
Louisville, KY 40292

Phone: (502) 852-6864
Fax: (502) 852-4560

WEBSITE: louisville.edu/anthropology

ANTHROPOLOGY

CULTURAL ANTHROPOLOGY

- ANTH 201: CULTURAL ANTHROPOLOGY - (GEN ED SBD2)
ANTH 252: PEOPLE AND THEIR FOOD - Sustainability related
ANTH 314: INTRO TO JAPANESE SOCIETY - (SBD2)
ANTH 321: AMERICAN INDIAN WOMEN
ANTH 337: NATIONALISM, VIOLENCE, AND THE STATE
ANTH 347: GLOBAL CAPITALISMS
ANTH 349: MODES OF CONSCIOUSNESS / ANTH 549 - Combined
ANTH 361: SPECIAL TOPIC: ANTHROPOLOGY OF TOURISM
ANTH 430: PRACTICUM IN ANTHRO EDUCATION
ANTH 475: ENGAGED ANTHROPOLOGY - CUE
ANTH 508: HISTORY OF ANTHROPOLOGY - WR, CUE
ANTH 511: ETHNOGRAPHIC METHODS - WR

BIOLOGICAL ANTHROPOLOGY

- ANTH 202 : BIOLOGICAL ANTHROPOLOGY - (GEN ED B)
ANTH 207: PRINCIPLES OF BIO ANTHROPOLOGY + LAB
Note: Credit allowed only for one ANTH 202 or ANTH 207
ANTH 303: HUMAN ORIGINS
ANTH 410: SKELETAL FORENSICS
ANTH 510: METHODS IN BIO ANTHROPOLOGY - WR

ARCHAEOLOGY

- ANTH 203:: ARCAEOLOGY OF HUMAN HISTORY - SBHD2
ANTH 206: PRINCIPLES OF ARCHAEOLOGY + LAB - B
ANTH 322: ARCHAEOLOGY OF NORTH AMERICA - SBH
ANTH 326: AFRICAN ARCHAEOLOGY
ANTH 381: GEOARCHAEOOGY / ANTH 581 - Combined
ANTH 509: ARCHAEOLOGICAL THEORY AND METHODS - WR

INDIVIDUALIZED INSTRUCTION

- 401-01 CO-OP INTERNSHIP: ANTHROPOLOGY *
450-01 READINGS & RESEARCH
451-01 INDEPENDENT STUDY

*CONTACT for CO-OP: jh.zhao@louisville.edu

Search More Anthro classes at: Hal.louisville.edu