

Special Assistants to the President:

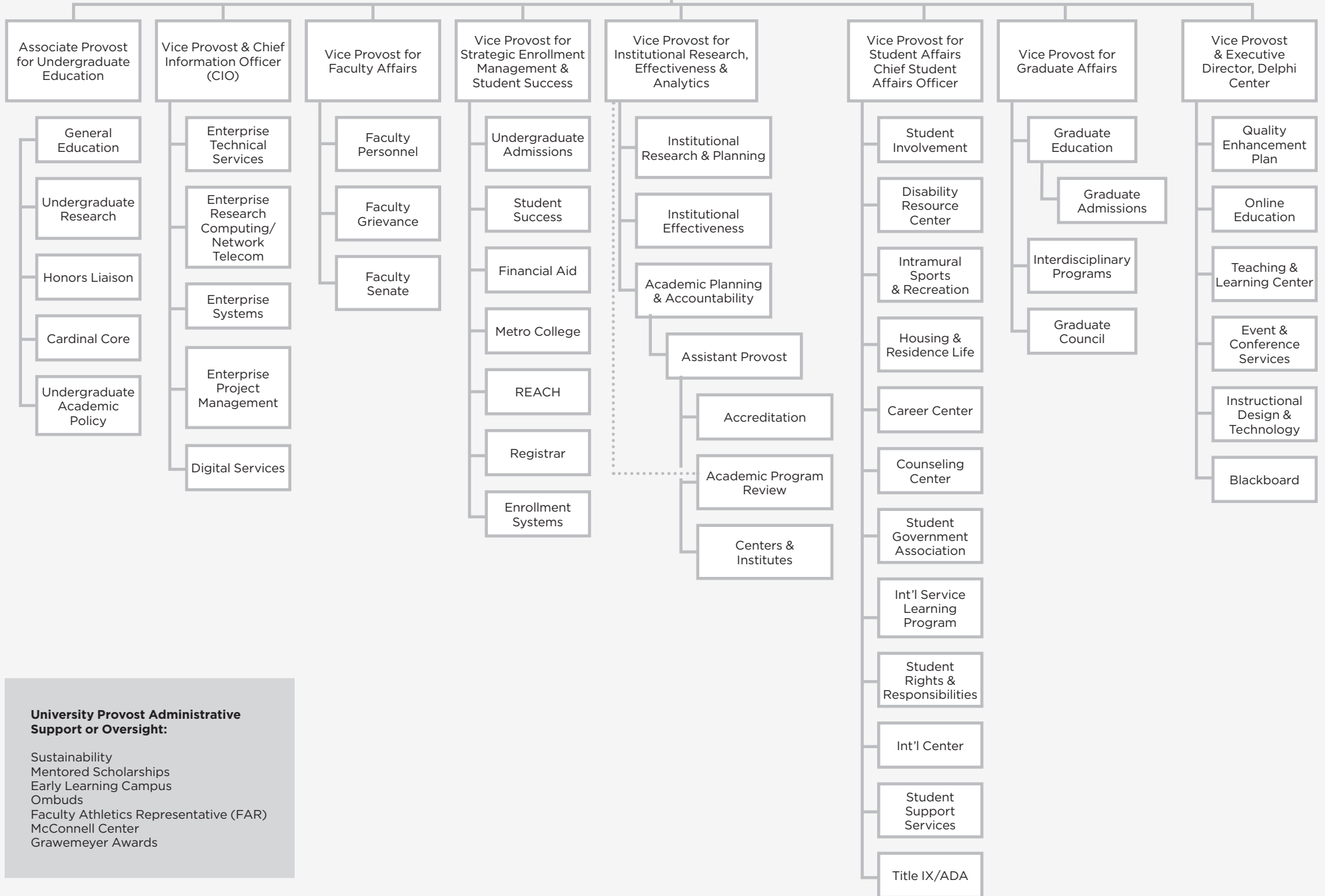
- Strategic Plan Implementation
- P-20 Strategy
- Strategic Initiatives

University of Louisville Academic Units:

- Arts & Sciences
- Business
- Dentistry
- Education & Human Development
- Engineering
- Graduate School
- Law
- Libraries
- Medicine
- Music
- Nursing
- Public Health & Information Sciences
- Social Work

*Denotes an interim appointment.

Executive Vice President & University Provost



University Provost Administrative Support or Oversight:

- Sustainability
- Mentored Scholarships
- Early Learning Campus
- Ombuds
- Faculty Athletics Representative (FAR)
- McConnell Center
- Grawemeyer Awards

