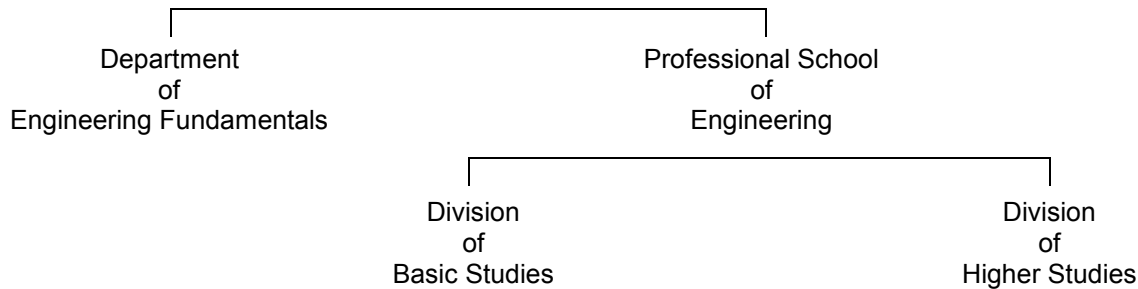


General Information

The J.B. Speed School of Engineering serves the University of Louisville as the College of Engineering and Applied Sciences. It was established in 1925 as a result of an endowment from the James Breckenridge Speed Foundation. The J.B. Speed School of Engineering is organized as a Professional School of Engineering in the following divisions:



Full-time students pursue a program of approximately four semesters duration in the Department of Engineering Fundamentals and a program of longer duration in the Division of Basic Studies. Subsequent to completion of the program of studies in the Division of Basic Studies, or equivalent, students desiring to pursue the first professional degree of the school, the Master of Engineering degree then formally apply for admission to the Division of Higher Studies of the Professional School of Engineering.

Requirements for admission or readmission to the Division of Higher Studies are:

[1] Completion of a program of studies comparable to that obtained through the Division of Basic Studies.

[2] Recommendation for admission or readmission to the Division of Higher Studies by the faculty and chair of the department.

[3a] All departments except bioengineering: A cumulative grade-point average of 2.50 (4.0 grade-point scale) for all prior academic undergraduate coursework and acceptance by the respective department. Students with cumulative grade-point averages from 2.25 to 2.50 may be admitted upon approval of their respective departmental faculty and chair through formally petitioning in programs other than Civil and Environmental Engineering. Individual departments may have additional criteria.

[3b] Bioengineering: A cumulative baccalaureate program grade-point average of 3.0 (4.0 grade-point scale) for all prior academic course work completed in the program. However, those students with cumulative baccalaureate grade-point average of 2.5-3.0 may be admitted on a provisional basis by submitting a formal petition to the faculty of the bioengineering program.

Instructions for Making Application for Admission

[1] All applicants must complete all sections of this application and deliver or mail it to the Associate Dean of Academic Affairs, JB Speed School of Engineering, University of Louisville, Louisville, KY 40292.

[2] Although letters of recommendation or biographical sketches are not specifically requested, supplementary information provided by the applicant in support of this application will be given due consideration.

[3a] All departments except Bioengineering and Civil and Environmental Engineering. If your cumulative undergraduate grade-point average is from 2.25 to 2.50 (4.0 grade-point scale), you must attach your appeal letter to the higher studies application.

[3b] Bioengineering students with cumulative baccalaureate grade-point averages of 2.5-3.0 (4.0 grade-point scale) may be admitted on a provisional basis by attaching a formal petition to the higher studies application addressed to the faculty of the bioengineering program.

Required Admission Credentials
(for applicants not currently enrolled in the JB Speed School of Engineering)

Transcripts

[1] College transcripts from each college attended must be provided. Applicants seeking admission for regular status must provide a transcript certifying at least a bachelor's degree. If the applicant attended an educational institution outside of the United

States, the University requires that records from such institutions be submitted to Educational Credentials Evaluators, Inc. (ECE) for evaluation. Information on submitting credentials to ECE is available from the Admissions Office.

[2] Final transcripts must be provided for work in progress at the time of application and for any work earned after making application.

Test Scores

[1] T.O.E.F.L. scores from the Test of English as a Foreign Language are required of all foreign applicants seeking admission to degree programs. (See instructions on the Application for Foreign Students.)

Additional Information

[1] An application is not considered complete unless all related credentials have been received in the Office of Admissions.

[2] Priority for processing will be given to applications completed no later than six weeks prior to the beginning of the term for which the application is made.

[3] If you do not enroll, your admission credentials will be destroyed after 12-18 months.

[4] All admission credentials must be sent to the Office of Admissions, University of Louisville, Louisville, KY 40292. If you have questions concerning your application, write to the Office of Admissions or the Office of Academic Affairs or call (502) 852-4415.

[5] There is an Application fee for first time U of L Students.