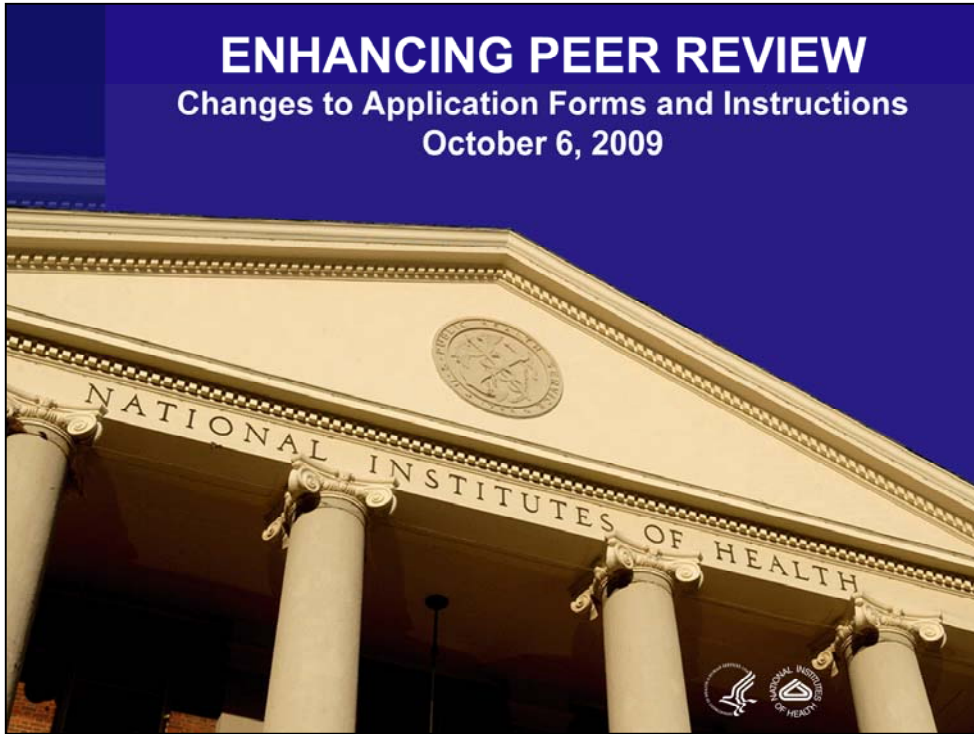


ENHANCING PEER REVIEW

Changes to Application Forms and Instructions
October 6, 2009



NIH Peer Review System

- Cornerstone of the NIH Extramural Mission
- Standard of Excellence Worldwide
- Collaboration between NIH Extramural Staff and Scientific Community

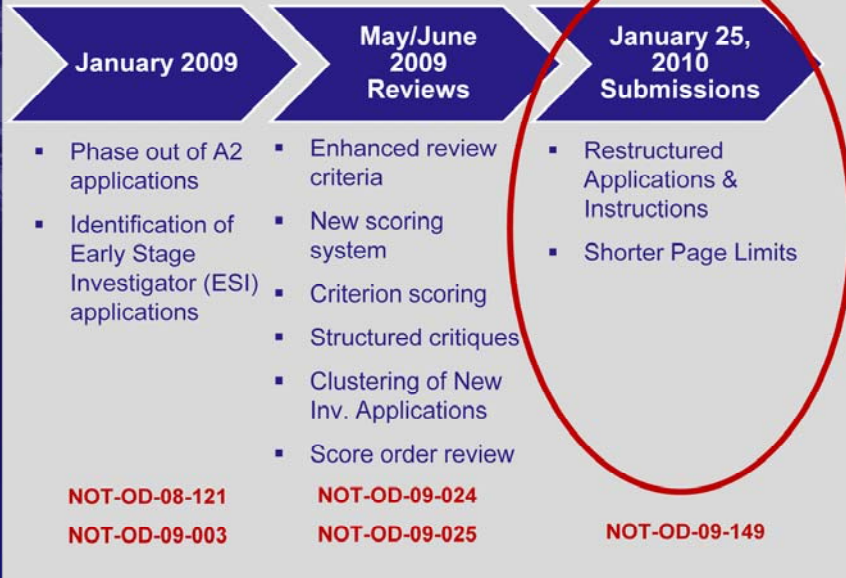


Enhancing NIH Peer Review

- Facilitate changing nature of science
- Identify and encourage new and early stage investigators
- Ease burden on research enterprise
- Streamline time to award
- Fund the best science, by the best scientists, with the least amount of administrative burden



Enhancing Peer Review Overview and Timeline



Major Changes to Applications

Major changes for due dates on or after
January 25, 2010

- Restructured application forms
- New instructions including shorter page limits

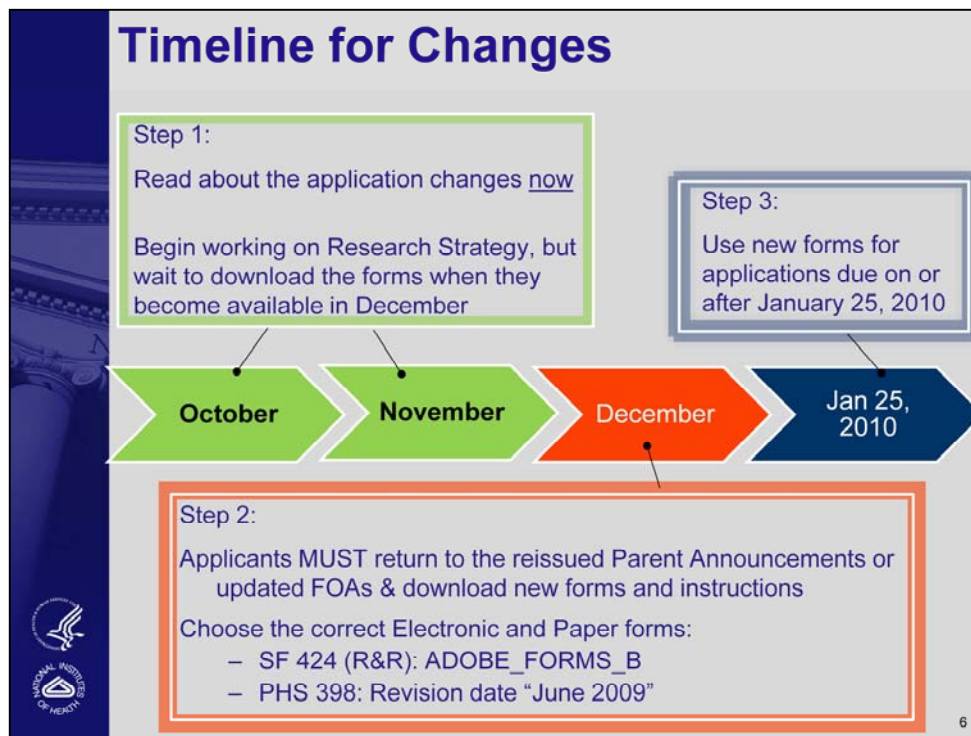
For ALL competing applications:
New, Renewal, Resubmission, and Revision



5

Applicants who are eligible for continuous submission should use current forms and instructions through February 7, 2010 for AIDS applications that would have been due on January 7, 2010.

For noncompeting progress reports, the PHS 2590 now includes the instruction to address any changes to the innovative potential of the project (NOT-OD-09-139).



Updated FOAs for the following applications will be posted in early 2010:

- Small Business Innovation Research (SBIR [R43/R44])/Small Business Technology Transfer (STTR [R41/R42]) applications
- Conference (R13/U13) grant applications
- Individual Kirschstein National Research Service Award (NRSA) Fellowship applications (F30, F31, F32, and F33).

Restructured Application Forms



Goals of Restructured Applications

- Align the structure and content of the forms with review criteria
 - To focus the applicants and reviewers on the same elements
 - To help ensure a more efficient and transparent review process



Overview of the Changes

- Application forms will be revised in three sections:
 - Research Plan
 - Biographical Sketch
 - Resource and Facilities



The five scored review criteria for Research applications correspond to the following sections:

Significance - Research Strategy part of the Research Plan

Investigator(s) - Biographical Sketch, and Multi PD/PI part of the Research Plan

Innovation - Research Strategy part of the Research Plan

Approach – Research Strategy part of the Research Plan

Environment – Resources, and Select Agents part of the Research Plan.

New Research Plan Components

Introduction

Specific Aims

Background and Significance

Preliminary Studies/Progress Report

Research Design and Methods

*Research
Strategy*

Inclusion Enrollment Report

Progress Report Publication List

Human Subjects Sections....

protections, women/minorities, enrollment,
children

Other Research Plan Sections....

animals, select agents, MPI, consortium, support,
resource sharing

Appendix



Research Plan to align with Significance, Innovation, and Approach Enhanced Review criteria.

New Research Strategy Section

Current Application	New Application
Background and Significance	Research Strategy a. Significance
Research Design and Methods	b. Innovation
Preliminary Studies/Progress Report	c. Approach <ul style="list-style-type: none">• Preliminary Studies for New Applications• Progress Report for Renewal/Revision



The new Research Strategy section corresponds to the Significance, Innovation, and Approach Enhanced Review criteria.

New Research Strategy Preparation

- A single attachment for the Research Strategy (previously 3 files) increases applicant control over the look and feel of the application.
 - Simpler preparation for the applicant
 - Easier reading for reviewers
 - Electronic validation of page limits for Research Strategy



The new Research Strategy section corresponds to the Significance, Innovation, and Approach criteria.

Revisions to Biographical Sketch

- Personal Statement added:
 - Briefly describe why your experience and qualifications make you particularly well-suited for your role in the project
- Publications revised:
 - Limit the list of publications or manuscripts to no more than 15
 - Make selections based on recency, importance to the field, and/or relevance to the application



The Biographical Sketch corresponds to the Investigator(s) criterion.

Revisions to Address Environment

- *Instructions added to Resources:*
 - Provide a description of how the scientific environment will contribute to the probability of success of the project
 - For ESIs describe the institutional investment in the success of the investigator
- *Instructions added to Research Plan*
 - In Select Agents Research section, describe the biocontainment resources available at all performance sites



These two sections correspond to the Environment **crit**erion.

Early Stage Investigator (ESI): An individual who is classified as a New or First-Time Investigator and is within 10 years of completing his/her terminal research degree or is within 10 years of completing medical residency (or the equivalent) is considered an Early Stage Investigator (ESI).

New Instructions Including Shorter Page Limits



Goals of Shortened Page Limits

- Reduce the administrative burden
- Focus on the essentials of the science
- Avoid information overload



Page Limit Revisions

Current Page Limit (Section 2-5 of the Research Plan)	New Page Limit (Research Strategy)
<25	6
25	12
>25	Follow FOA Instructions

Note: Follow FOA page limit requirements if different from the application instructions.



Table of Page Limits (Part I)

Section of Application with Page Limits	Page Limits
Introduction to Revision Application For all Activity Codes	1 page
Introduction to Resubmission Application For all Activity Codes, EXCEPT Training (T, D), K12, and R25	1 page
Introduction to Resubmission Application For institutional Training (T), International Training (D43, D71), Institutional Career Awards (K12), and Research Education Applications (R25)	3 pages
Introduction to Revision or Resubmission Applications For each project and core of multi-component applications	1 page



Table of Page Limits (Part II)

Section of Application with Page Limits	Page Limits
Specific Aims For all Activity Codes that use an application form with the Specific Aims section	1 page
Research Strategy For Activity Codes R03, R13/U13, R21, R36, R41, R43, Fellowships (F), SC2, SC3	6 pages
Research Strategy For Activity Codes R01, single project U01, R10, R15, R18, U18, R21/R33, R24, R33, R34, U34, R42, R44, DP3, G08, G11, G13, UH2, UH3, SC1	12 pages
Research Strategy For each project and core of multi-component applications, such as Program Project/Center (P)	Generally 6 or 12 pages**

**Each project or core will follow the page limit of the equivalent activity code

For example, if a project is equivalent to an R01, the project will be allowed 12 pages. Review the FOA and IC website for details.

Table of Page Limits (Part III)

Section of Application with Page Limits	Page Limits
Research Strategy For all other Activity Codes	Follow FOA instructions
Combined: Research Strategy and first four items of Candidate Information For Individual Career Development Award (K) Applications	12 pages
Items 2-5 of Research Training Program Plan For Institutional Career Development and Research Training Applications, including K12, T, D43, and D71	25 pages
Research Education Program Plan For Research Education Grant Applications (R25)	25 pages
Biographical Sketch For all Activity Codes except DP1 and DP2	4 pages
Biographical Sketch For DP1 and DP2	2 pages



What Does the Applicant Need to Do?



Steps for Success – Part 1

- Read about the upcoming requirement changes now so that you can begin writing your Research Strategy
- Information available on the Enhancing Peer Review website:
 - Policy Announcement: NOT-OD-09-149
 - New FAQs
 - Training & Communications Resources

<http://enhancing-peer-review.nih.gov/>



Steps for Success – Part 2

- In December, go back to the updated FOA or reissued Parent Announcement
- For both electronic and paper, choose the **correct** application package and instructions to download:
 - SF 424 (R&R): ADOBE_FORMS_B
 - PHS 398: Revision date “June 2009”

Applications submitted using incorrect forms will be delayed and may not be reviewed!



Steps for Success – Part 3

- Read the new application instructions carefully
- For due dates on or after January 25, 2010, submit your electronic and paper applications using the new application forms



For additional information:

Enhancing Peer Review at NIH Web Site



<http://enhancing-peer-review.nih.gov>



Application Support

- **NIH Grants Information Help Desk:** For questions about the content of new forms and instructions.
 - E-mail: grantsinfo@od.nih.gov or
 - Phone: 301-435-0714
- **Grants.gov Contact Center:** For questions on form functionality or submission to Grants.gov.
 - E-mail: support@grants.gov
 - Phone: 1-800-518-4726
- **NIH eRA Help Desk:** For post-submission questions or technical issues that threaten NIH's timely receipt of your application.
 - Web support: <http://ithelpdesk.nih.gov/eRA/>
 - Phone: 1-866-504-9552 or 301-402-7469

