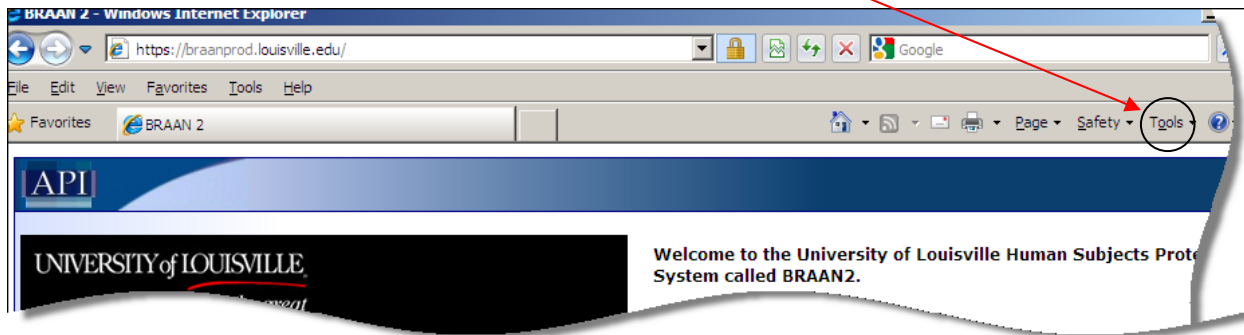
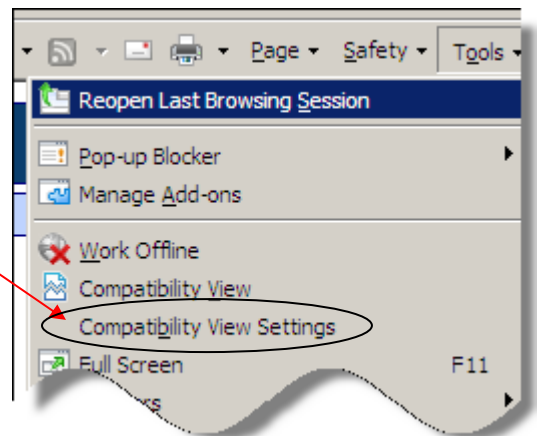


How to access BRAAN2 using Internet Explorer 8.0

1. Open Internet Explorer
2. Bring up the BRAAN2 Login Page (<https://braanprod.louisville.edu>)
3. On the top right side of the browser click on the Tools drop down (this is in the panel across the top of IE8, not in BRAAN2)

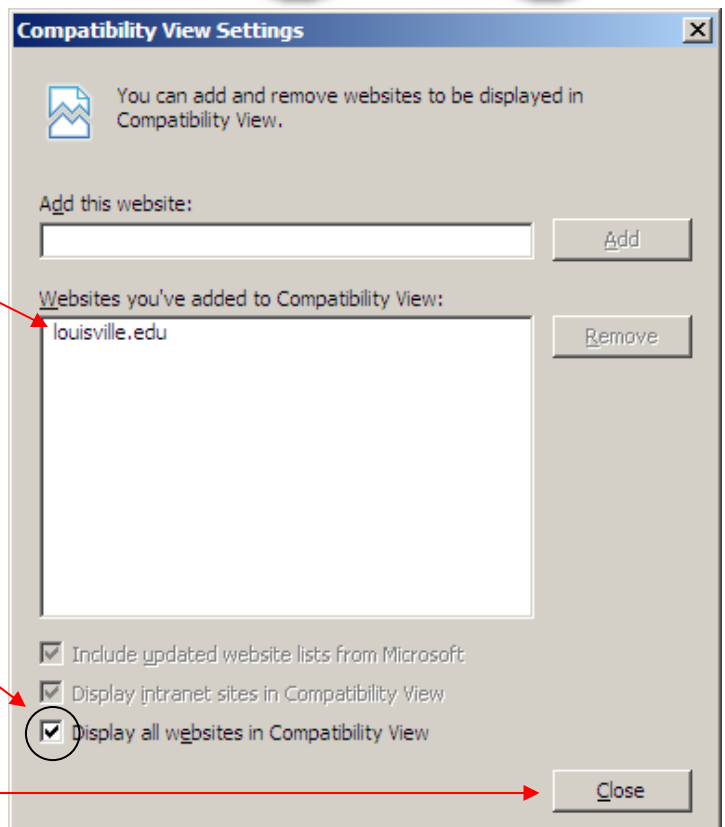


4. Click on Compatibility View Settings



5. louisville.edu should be listed under "Websites you've added to Compatibility View." If not, add louisville.edu to the list.

6. "Display all websites in Compatibility View" should be checked.



7. Click Close.