



UNIVERSITY OF  
**LOUISVILLE**®  
It's Happening Here.

**Annual Security and Fire Safety  
Reports for 2010  
William R. Belknap Campus  
Health Science Center  
Shelbyhurst Campus**

**The University of Louisville**  
**The Jeanne Clery Act Report for 2011**  
**Activity Reported for Calendar Year 2010**

**Section 1: Campus Security Authority**

*List campus security authority personnel (definition at KRS 164.948(2)):* Campus security authorities at UofL include police officers, security officers and any official of the institution who has significant responsibility for student and campus activities, including student discipline, student housing, student judicial affairs and student life. The president or his designee may identify other officials as it is deemed necessary. If this happens, the university will make sure the information is disseminated to the university community. When professional mental health, pastoral and other licensed counselors are functioning in those capacities, they are not considered to be campus security authorities. University of Louisville Campus Security Authorities is:

- University President
- Provost and Assistant Provost
- Vice Presidents, Associate Vice Presidents and Assistant Vice Presidents
- Deans and Assistant Deans
- Department of Public Safety Police, Security and Telecommunicators
- Director, Residential Directors, Residential Advisors and Security Staff for Housing
- Dean and Assistant Dean of Students
- Director, Assistant Director, Coaching Staff and Trainers for Athletics
- Advisors for Student Organizations
- Director and Assistant Director of PEACC
- Director of the Women Center
- All Student Health Services Employees
- Advisors and Assistant Advisors for Academics
- Members of the Judicial Affairs

All members of the university community are encouraged to report crimes or criminal activity to University Police at (502) 852-6111. This list of Campus Security Authorities is subject to modification and is not intended to be all inclusive, due to changes in responsibilities within the university.

***Describe the extent and nature of enforcement authority of campus security authority personnel:***

University Police have the responsibility for law enforcement and criminal investigation at UofL. University Police officers are responsible for a full range of public safety services, including crime reports, investigations, medical emergencies, fire emergencies, traffic accidents, enforcement of state and local laws and all other incidents that require police assistance. These sworn police officers receive their law enforcement authority through the provisions of Kentucky Revised Statutes 164.950 - 164.990. University Police officers have formal law enforcement authority on property owned or controlled by UofL and on streets running through and adjacent to its campuses. University Police have county wide law enforcement jurisdiction obtained through an interagency agreement with the Jefferson County Sheriff's Office. It also has the authority to conduct university related criminal investigations anywhere within the Commonwealth of Kentucky. The Kentucky Law Enforcement Professional Standards Committee awarded the University of Louisville Police Department a Certificate of Accreditation. This certificate states that UofL has fulfilled all of the accreditation standards as established by the Kentucky Association of Chiefs of Police.

## **Section 2: Description of Information Programs**

University Police officers are trained according to Kentucky Law Enforcement Council standards. They attend the same basic police training academy as the other police officers in the Commonwealth of Kentucky. University Police officers are required to attend a minimum of 40 hours of in-service training annually and receive instruction in such areas as first aid, CPR, emergency response and firearms.

***Describe the working relationship of campus security authority personnel with state and local police agencies:*** University Police officers work closely with local, state and federal law enforcement agencies to provide services to the university community. Officers meet with their counterparts from the Louisville Metro Police Department about common crime problems and criminal activity near campus. Throughout the year, The University of Louisville Police and The Louisville Metro Police form a joint task force to combat crime on and around campus. They regularly exchange crime related reports and statistics, including those for off campus locations owned or leased by U of L recognized student organizations.

***Describe programs that inform students and employees about:***

***(a) Campus safety and security***

Section 2: Description of Information Programs

Security Awareness and Crime Prevention Programs

UofL employs these crime prevention programs and projects:

- 1) Escort Program: DPS provides individuals who request it, an on campus escort from dusk until dawn or for safety concerns. In special situations, DPS will escort people up to four (4) blocks beyond the campus perimeter.
- 2) Crime Prevention Presentations: DPS makes crime prevention presentations to new students, faculty and staff at their respective orientations and to residence hall and campus fraternity and sorority residents. DPS also makes presentations available to the entire university. Past presentations have been made to such groups as Physical Plant employees, commuter students, students with disabilities, international students, student government, specific campus departments, recognized student organizations and intercollegiate athletes.
- 3) Printed Crime Prevention Materials: Printed crime prevention brochures, posters and bookmarks related to motor vehicle security, bicycle security, residence hall security, the escort service, and HSC security are distributed at crime prevention presentations and at various locations throughout the university's campuses.
- 4) Victim Assistance Program: This program provides assistance in the areas of criminal prosecution, victim's rights and other areas to victims of on campus crimes.
- 5) Emergency Telephones: Exterior emergency telephones linked directly to DPS are located throughout the university's three campuses. There are a total of 129 emergency telephones.

6) Parking Lot Surveillance: One elevated security booth is located in the Floyd and Jefferson Street parking lot at the HSC and one in the Fourth Street parking lot on Belknap Campus. These booths are staffed to provide security surveillance of the parking lot and assistance to UofL patrons who park there. Security officers also are assigned to parking lots at Myers Hall, 620 Garage on Muhammad Ali Blvd at HSC, Chestnut Street Garage at HSC and Papa John's Cardinal Stadium. They are equipped with two way radios and are trained to respond to most emergency situations. Security officers are identified easily by the bright yellow shirts they wear. DPS security officers also actively patrol parking lots.

7) Electronic Alarm Systems: DPS monitors a comprehensive network of door control, duress, elevator alarm, intrusion detection and fire alarm systems via a computer based electronic monitoring system.

8) Surveillance Cameras: DPS monitors 416 surveillance cameras placed in strategic locations throughout the university's three campuses.

9) Crime Prevention Through Environmental Design (CPTED): DPS provides significant input into the physical and electronic security system design of all new and renovated campus facilities.

10) Security Surveys: DPS conducts security surveys and audits for selected campus departments each year and for other campus departments on request.

11) Facility Perimeter Surveys: DPS conducts monthly surveys of exterior lighting.

12) Operation Identification: University Police allows members of the university community to check out engraving tools so they can mark identification information on valuable personal property, such as bicycles, motor vehicles, computers and audio video equipment. The engraved information can help identify the property if it is stolen. University Police also encourage Operation Identification participants to record the serial and model numbers of valuable property and to store the information in an offsite location. DPS especially encourages on campus residents to participate in Operation Identification.

13) Crime Prevention Publicity: Crime prevention articles and materials are occasionally published in the "Cardinal" student newspaper, the employee daily email.

14) Rape Awareness, Education and Prevention: Rape awareness education and prevention presentations are made each year to members of the campus community.

15) Fatal Vision Simulation Goggles: Officers utilize Fatal Simulation Goggles to educate individuals on the affects of alcohol and provide an effort to reduce drunk driving and related crimes.

16) Community Policing Program: University Police officers attend meetings of campus associations, residence halls and other groups to provide up to date crime prevention information and to hear the concerns of members of the university community about crime and safety issues.

17) Rape Aggression Defense (R.A.D.) Systems: RAD is a self defense program for women and men. It helps women become more aware of the possible dangers that can develop at any time and teaches them to prevent, reduce and avoid high risk situations. This 12-hour course is not a martial arts course, but it does steadily develop women's self defense capabilities through hands on training. Information is available from University Police at (502)852-6111.

18) World Wide Web Site: DPS has a Web site at [www.louisville.edu/police](http://www.louisville.edu/police) for quick and up to date information on police, parking, fire safety and emergency procedures. The university community is encouraged to take a few minutes to browse this site. Questions can be directed to DPS at (502) 852-6111.

19) Community Awareness Programs: Members of the University Police are active participants in university sponsored awareness programs, such as health and awareness fairs. These programs provide the UofL community with a wide range of information concerning the resources available to them through the different university departments.

20) The University Shuttle Transportation Program: Parking operates several shuttle transportation vehicles on the Belknap and Health Sciences Campuses to transport members of the university community safely to campus locations. The routes and hours of operations vary. Information on route times and pick up and drop off locations is available at [www.ridetarc.org](http://www.ridetarc.org) and at [www.louisville.edu/admin/dps](http://www.louisville.edu/admin/dps).

21) National Bike Registry: University Police are members of the National Bike Registry and can access a national database to enter information on a stolen bicycle or to search for a bike that has been reported stolen. The National Bike Registry has an enrolled membership of municipal and university police departments from most states. With a large number of departments able to access a database that lists thousands of stolen bikes, it is more likely that a bike listed in the database will be returned to its owner if it is recovered. A link to the National Bike Registry ([www.nationalbikeregistry.com/signups.html](http://www.nationalbikeregistry.com/signups.html)) is on the University Police Web site at [www.louisville.edu/dps](http://www.louisville.edu/dps) under the headings Safety and Programs. Members of the university community can access this site and register their bicycle(s) for a nominal fee.

22) Active Shooter DVD Training Program: Due to the increase of shootings on campuses in America. DPS launched a program that provides guidance for surviving an active shooter situation through prevention and reaction. Weekly training is provided to faculty and staff through New Employee Orientation.

23) Stay Safe at College 360 Degrees: This program provides information to students on personal safety, cyber bullying and protecting personal property at college.

24) Rapid Response Team: The DPS created a team of trained police officers to respond and react to incidents on campus. The officers have been trained to respond to critical incidents and receive "Crisis Intervention Team Training".

25) Emergency Procedures on Web: The DPS has posted information on the web at <http://louisville.edu/dehs/emergency/procedures.html> documented procedures on emergency incidents such as; Active Shooter, Classroom Emergency Poster, UofL Emergency Telephone numbers, and many other situations.

26) Flex Team/Street Crimes Unit: DPS has developed a unit to address the concept of campus safety through street patrol. These officers target suspicious persons and activity in areas around and on campus while in unmarked vehicles.

27) Emergency Planning Group: The group meets monthly to discuss emergency planning.

28) Student Care Team: This team meets monthly and is an inter-departmental team addressing students in crisis

29) Equipped Patrol Cars with Mobil Data Computers: Through a grant received from Kentucky Homeland Security we have placed mobile data computers in our police vehicle.

30) UofL Alert system adoption finalized, November 2007: This system includes InformaCast, Rave text, bulk email and web page messaging systems. Over 13,936 individuals are currently registered for the Rave alerts. 39,652 individuals receive emails.

31) The University of Louisville has introduced The CardSafety App. CardSafety is a free smart phone app, available online at the Android, Blackberry and iPhone stores. It was developed to provide:

- Interactive maps for Belknap and Health Sciences campuses.
- Emergency procedures for 20 types of emergencies.
- Automatic dialer for Safety Escorts, University Police and 911.
- Information regarding crimes and crime prevention.
- Links to UofL emergency web sites.

**(b) How to report a crime:** As does any other community of more than 24,000, UofL experiences accidents, injuries, crimes and other emergencies. Members of the UofL community should report all crimes or emergencies on any UofL campus to DPS as soon as possible. DPS can be reached from any on campus telephone by dialing 911 for emergencies and 852-6111 for all other calls for service. The telecom center is staffed 24 hours a day by trained and state certified telecommunications officers. Off campus, local callers can reach DPS at 852-6111; callers from long distance calling areas should dial (502) 852-6111.

The University of Louisville campuses are equipped with a number of outdoor emergency telephones that are programmed to call DPS automatically when activated. Pressing the red button initiates an emergency call. Free, on campus public telephones are located in the lobbies or inside public areas of most university buildings. Members of the university community can use these easily accessible telephones to call DPS by dialing 852-6111. The number is printed on or nearby the telephone.

The DPS telephone number also is listed in the online office directory at: [http://www.louisville.edu/admin/dps/staff\\_directory.htm](http://www.louisville.edu/admin/dps/staff_directory.htm). It is included on all of the department's printed publications and correspondence. DPS is equipped with a telecommunications device (TDD) for communications with the hearing impaired. A number of women's restrooms, elevator cabs and remote areas on campus have help buttons or pull stations some of which sound a loud local alarm in addition to providing an alarm directly to DPS.

University Police maintain direct communications with the local police, fire and emergency medical response agencies to facilitate response in an emergency. DPS also maintains communication with the university's Physical Plant and Environmental Health and Safety departments.

### **Hate Crime Reporting:**

University Police will investigate fully every hate or bias crime reported by the university community. Anyone who believes that he or she is the victim of a hate or bias crime can report it by calling the University Police at 852-6111 and leaving his or her name and telephone number. An investigator will return the call within 24 hours. An individual may also contact The Bias Incident Response Team (BIRT) at 502-852-BIRT (2478).

## **Sexual Misconduct Policy Statement:**

The University of Louisville is dedicated to fostering a quality educational environment in its campus community. UofL expects its students to treat other people with dignity and respect. Therefore, the university will not tolerate any form of sexual misconduct. Sexual activity should be explicitly agreed upon by all involved parties. Verbal communications of non-consent, non-verbal acts of resistance or rejection, or mental impairment of the victim for any reason — including the victim's overuse of alcohol or drugs — may constitute lack of consent. The use of alcohol or drugs will not be accepted as an explanation for the actions of any student charged with a Code of Student Conduct violation.

Students accused of any disciplinary misconduct under the Code of Student Conduct are subject to administrative disciplinary proceedings during the pending of any criminal, civil or other university proceedings regarding the same incident. If a student is charged with sexual misconduct and proceeds through the non-academic disciplinary process, both the accused student and the accuser shall be afforded the hearing procedure rights listed in the Code of Student Conduct, including the opportunity to have an adviser present during the disciplinary proceeding.

If an accused student is found responsible for sexual misconduct, sanctions may range from a reprimand to disciplinary expulsion as outlined in the UofL Code of Student Conduct. Other educational or developmental activities considered beneficial to the accused student's growth and behavioral change process also may be required. In addition, both the accuser and the accused shall be informed of the outcome of any nonacademic disciplinary process.

### **Anyone who believes a sexual offense has occurred:**

- 1) SHOULD report such conduct immediately to the University Police at (502) 852-6111 or to their Residence Hall staff.
- 2) SHOULD NOT change their clothing.
- 3) SHOULD NOT bathe, or clean their clothing.
- 4) SHOULD NOT apply or take any medication.
- 5) SHOULD, whenever necessary and after speaking with authorities, seek medical or counseling assistance. On campus medical assistance is available through the Student Health Services (502) 852-6479 (8:00 – 4:30 Monday - Friday). Information regarding Student Health Services can be found online at <http://www.med.louisville.edu/clinical/studenthealth/info.htm>

On campus counseling assistance is available through the Counseling Center at (502)852-6585.

### **When a victim reports an alleged sexual misconduct violation, University Police will inform the victim of their options:**

- 1) To notify the proper law enforcement authorities and the option to get help in doing so.

2) To participate in on and off campus counseling, mental health or student services for victims of sexual assault.

3) For opportunities and assistance to change academic and on campus living arrangements. The offices of the Vice President for Academic Affairs or the Vice President for Health Affairs should be contacted for any change in the academic arrangements, and the Office of Residence Life will be responsible for changes in on campus living arrangements.

University Police maintain close ties with the UofL PEACC program, a Department of Justice sponsored program for Prevention, Education and Advocacy on Campus and in the Community. PEACC develops education programs for the prevention of domestic violence, spouse abuse, stalking and sexual violence. Information about PEACC can be obtained by calling (502)852-2567 or by going to [www.louisville.edu/provost/womenctr/peacc](http://www.louisville.edu/provost/womenctr/peacc).

***(c) How to prevent crimes:***

1) Crime Prevention Presentations: DPS makes crime prevention presentations to new students, faculty and staff at their respective orientations, and to residence hall and campus fraternity and sorority residents. DPS also makes presentations available to the entire university. Past presentations have been made to such groups as Physical Plant employees, commuter students, students with disabilities, international students, student government, specific campus departments, recognized student organizations and intercollegiate athletes.

2) Printed Crime Prevention Materials: Printed crime prevention brochures, posters and bookmarks related to motor vehicle security, bicycle security, residence hall security, the escort service, and HSC security are distributed at crime prevention presentations and at various locations throughout the university's campuses.

3) Crime Prevention Publicity: Crime prevention articles and materials are occasionally published in the student newspaper and the employee daily email.

**Campus Sex Crimes Prevention Act**

The Campus Sex Crimes Prevention Act (section 1601 of Public Law 106-386) mandates that universities advise the campus community where it can obtain law enforcement agency information provided by a state under section 170101(j) of the Violent Crime Control and Law Enforcement Act of 1994 (42 U.S.C. 14071(j)), concerning registered sex offenders.

**The Kentucky State Police Sex Offender Registry (SOR)** is located at:

<http://www.kentuckystatepolice.org/sor.htm>. The Kentucky State Police provides sex offender and criminal offender registration information to the public through this Web site. The intent of this site is public safety and awareness. This database is made available to alert possible victims of potential danger, not to punish or embarrass offenders.

Convicted sex offenders and criminal offenders have always lived in our communities, but only in recent years have laws been passed which have required these offenders to register with authorities. Unfortunately, many convicted offenders will commit more offenses. There is an overriding interest and need to ensure the public's safety by providing registered offender information. It is important to note that only criminal offenses covered by the statute require registration with the state police.

## **Drug and Alcohol Policies:**

UofL policies for drug and alcohol use on campus properties and at university sponsored activities prohibit:

- 1) Distribution, possession or use of any illegal drug or controlled substance without legal authorization;
- 2) Providing alcoholic beverages to individuals less than 21 years of age, or possession of alcoholic beverages by individuals less than 21 years of age; or
- 3) Illegal possession of an open container of an alcoholic beverage, public intoxication, driving while intoxicated and drinking alcoholic beverages in an unlicensed public place.

Students, faculty, staff and administrators who violate the university's drug and alcohol policies will face disciplinary sanctions that could, in addition to suspension or dismissal from the university, include prosecution and imprisonment under federal and Kentucky laws.

The Code of Student Conduct lists details of offenses and discipline for students. Staff may be disciplined under Section 11.1 of the Staff Handbook. Deans may discipline faculty per the university's Red Book Sections 4.5.3 or 3.2.2 with review per 4.4 for sanctions less than dismissal or suspension for one year.

The health risks associated with the misuse and abuse of mind altering drugs, including controlled substances and alcohol, include, but are not limited to, physical and psychological dependence; damage to the brain, pancreas, kidneys and lungs; high blood pressure; heart attack and stroke; ulcers; birth defects; a diminished immune system; and death.

The UofL Counseling Center provides assessment and referral services to university students, as well as serving as an education resource for information on alcohol and other drugs. The Counseling Center staff and peer educators provide educational and prevention programs that address a myriad of issues that surround alcohol and other drug use and abuse.

For more information about these programs or about individual assistance, call the Counseling Center at (502)852-6585. Services for faculty and staff are available through the Employee Assistance Program (EAP). More information on the EAP can be obtained by calling (502)852-6543.

## **Section 3: Statements of Policies and Procedures:**

***(a) Provide the institution's policy statement on making Special Reports to the campus community of crimes that present a safety or security threat to students or employees. KRS 164.9481(d)***

DPS will advise members of the campus community on a timely basis about campus crime and crime related problems. Efforts include:

- 1) UofL Today: The Office of Communications and Marketing includes announcements of crime

Alerts and crime related problems in its daily email announcements to faculty and staff. The announcements contain a link to the University Police Web site ([www.louisville.edu/police](http://www.louisville.edu/police)) for complete information.

2) The university employs UofL Alert, an emergency alert notification system, to inform students, staff and faculty of an event on or near campus that may be potentially life threatening or injurious to the community. The system uses several redundant media to deliver the emergency message.

- Text messaging. This system sends emergency communications directly to the cell phones of students, faculty and staff. Participants must opt in, and UofL encourages all students, faculty and staff to do so. Registration is online at <http://louisville.edu/alerts/> only people with a UofL e-mail address can register.
- Voice over Internet Protocol. This system transforms the university's 8,900 telephones into a loudspeaker warning system. In an emergency, the phones emit an audible message via a speaker, a light flashes and a text message appears on the phone's screen. Recipients do not have to sign up for this notification.
- E-mail. All students, faculty and staff have e-mail accounts through the university. In an emergency, a message goes out to them via their e-mail account. Recipients do not have to sign up for this notification.
- Web. Anytime UofL Alert is activated, the initial announcement and any updates are posted prominently on UofL's main web page.

3) Special Alerts: When circumstances warrant it, special crime alerts are prepared and distributed campus wide.

4) World Wide Web: DPS posts crime alerts, crime prevention tips, crime statistics and a daily crime log (Media Log) on its Web site at [www.louisville.edu/dps](http://www.louisville.edu/dps). The site, which is part of the UofL Web site, also has parking information.

5) Uniform Crime Reports: University Police annually contribute crime statistics to the Federal Bureau of Investigation's Uniform Crime Report. The yearly report provides detailed statistical information and is available at academic and public libraries.

6) Stay Connected: Fast alert text messaging system is the fastest way to receive alerts regarding closing, alerts and emergency notifications. Register on <http://louisville.edu/alerts/>.

***(b) If the institution provides student housing facilities, describe the institution's procedure for disclosing the existence or nonexistence of automatic fire suppression systems in on-campus housing facilities. KRS 164.9492***

Fire Suppression System:

All residence hall facilities that are located on the Belknap and Health Science campuses are fully equipped with automated fire suppression systems, including those managed by University of Louisville Properties. This automated system will activate either dry or wet sprinkling devices throughout the facility when fire or extreme heat puts it into alarm. The systems also report back to a central alarm

system located in the campus department of public safety. All systems are monitored regularly by the university.

Not all Greek Houses located on Unity place are equipped with automated suppression systems. The houses that are fully equipped include: Delta Zeta, Chi Omega, Lambda Chi, and the new Phi Kappa Tau house. Those that are not equipped are therefore are restricted from having individuals sleep in the house. Kappa, Triangle, Sigma Phi Epsilon, and Sigma Chi. All units are being required to add systems in the future. University Park Apartments which is a privately managed facility located on university property off Eastern Parkway does not have automated sprinkling systems in the apartment units. They are equipped with individual smoke detection.

***(c) If the institution provides student housing facilities, provide the institution's policy for giving students with disabilities priority for first-floor housing. KRS 164.9495 (1)***

Students with Disabilities:

There are three options available to students who feel the accommodations offered are not satisfactory:

1. The student may request to move to another space that may better meet the requested needs. Room changes can be requested by completing a form in the Housing and Residence Life Office. The student should talk with a Housing staff member to clarify why the room change is being requested and what accommodations are needed. Room changes are granted as the space is available on a first come/first served basis.
2. Students may request to have specific modifications completed or installed in their assigned rooms. Requests for modification of space should be submitted in writing to the Associate Director for Facilities in the Housing and Residence Life Office. The Associate Director may discuss the modification with the Disability Resource Center staff. The request should address the following issues: a) is there a negative health impact that may be permanent if the request is not met? b) What is the likely impact on academic performance if the request is not met? c) What is the likely impact on social development if the request is not met? d) What is the likely impact on the student's level of comfort if the request is not met?
3. The student may request to cancel the housing application and choose to live in an off-campus facility. Cancellation of housing should be submitted by completing the cancellation request form available in the Housing Office. A student canceling due to lack of requested accommodations may request a refund of license fee beginning with the date the student properly checks out of the assigned space. This is based on a daily rate.

Appeals of decisions, sanctions, and/or fees assessed by Housing any student who wants to appeal a decision made within Housing may do so by submitting a written request to the Vice President for Student Affairs, Swain Activities Center, Room W302, 852-6933.

***(d) If the institution provides student housing facilities, describe the institution's policy for maintaining a record of any on-campus housing assignment for students with disabilities, and the procedure for alerting safety and emergency personnel of the location of students with disabilities. KRS 164.9495 (2)***

Evacuation for Students with Disabilities:

This policy includes students that may have temporary impairments (e.g., crutches, wheelchair). Those students should make the building staff aware of their status as soon as possible. In the event of an emergency that requires evacuation of a university facility, occupants should follow the procedures provided to ensure their safety. The sounding of the fire alarm indicates the necessary evacuation of the building for all students. Residents on the first floor with a means of egress should evacuate the building immediately.

Residents above the first floor should go to a room with an outside window and a phone (preferably your own). Call the Department of Public Safety (852-6111) and inform them of your location and wait there until help arrives. Your evacuation will be coordinated by the responding emergency personnel. DPS will notify them of your location. If the emergency is determined to be false (false fire alarm, etc.), you will not be evacuated from the building.

Our office maintains a list of students with disabilities and this list is passed on to the Department of Public Safety. Because students may not be in their rooms when an emergency occurs, we ask your assistance by calling DPS to inform them of your location. A list of students with disabilities is kept in the fire alarm control panel in each hall.

## Campus Fire Safety Annual Report:

### Fire Statistics:

The University of Louisville Fire Statistics for 2005 through 2010 is listed in the charts below. They are listed by F/NA (fire no alarm), F/WA (fire with alarm), FANF (fire alarm no fire), Arson, Auto (motor Vehicle), Trash and Other (all other).

#### 2010-Clery/Minger Report Annual Fire Safety Statistics

1. **Regarding listing the each housing facility incident of an actual fire separately**-Were submitted to you earlier.
2. **A description of the fire safety system for each on-campus student housing facility.** Each housing facility is equipped with:
  - a. An automatic fire sprinkler system
  - b. Fire alarm pull stations
  - c. Smoke/heat detectors
  - d. A minimum of two separate and remote routes of egress
  - e. fire rated doors and walls
3. **The number of the fire drills held the previous calendar year.**
  - a. Drills are held quarterly, are monitored by staff and documented.
4. **The institution's policies or rules on portable electrical appliances, smoking, and open flames in student housing facilities.**
  - a. Portable electrical appliances such as space heaters, George Forman Grills, torches lamps, and similar heat producing appliances are specifically prohibited. Smoking of tobacco



Auto	0	0	0	0	0	0	0	0	0	0	0	0	0
Trash	0	0	1	0	0	0	0	0	1	1	0	0	3
Other	1	1	0	1	0	0	0	0	0	0	0	0	3
Total	15	15	20	13	23	15	14	25	32	25	23	21	222

2007

Month	Jan	Feb.	Mar	April	May	Jun	July	Aug	Sept	Oct	Nov	Dec	Total
F/NA	0	0	0	1	0	0	0	0	2	3	0	0	6
F/WA	0	0	1	1	0	0	0	0	0	0	0	0	2
FANF	19	14	11	14	11	12	12	14	15	24	9	12	167
Arson	0	0	0	0	0	0	0	0	0	0	0	0	0
Auto	0	0	2	0	0	0	0	0	0	0	0	0	2
Trash	1	1	1	2	1	1	0	0	6	2	0	0	15
Other	0	1	1	0	2	0	0	0	0	0	2	1	7
Total	20	16	16	18	14	13	12	14	23	29	11	13	199

2008

Month	Jan	Feb.	Mar	April	May	Jun	July	Aug	Sept	Oct	Nov	Dec	Total
F/NA	0	0	0	0	0	0	0	0	2	3	0	0	5
F/WA	0	0	0	0	0	0	0	0	0	0	1	0	1
FANF	21	11	10	20	9	11	11	20	16	14	11	4	167
Arson	0	0	0	1	0	0	0	1	0	0	0	0	2
Auto	0	0	0	0	0	0	0	0	0	0	0	0	0
Trash	0	0	1	4	1	1	0	4	4	4	1	0	20
Other	0	1	1	0	0	0	0	0	0	2	3	2	9
Total	21	12	12	25	10	12	11	25	22	23	16	6	204

2009

Month	Jan	Feb.	Mar	April	May	Jun	July	Aug	Sept	Oct	Nov	Dec	Total
F/NA	0	0	2	1	0	0	0	0	0	1	0	1	5
F/WA	1	0	0	1	0	0	0	0	0	0	0	1	3
FANF	12	16	21	10	12	19	15	28	15	15	12	17	192
Arson	0	0	0	0	0	0	0	0	0	0	0	0	0
Auto	0	0	0	0	0	0	0	0	0	0	0	0	0
Trash	0	1	1	4	0	1	0	0	0	1	0	0	8
Other	1	1	1	3	2	1	0	1	1	0	0	0	11
Total	14	18	25	19	14	21	15	29	16	17	12	19	219

2010

Month	Jan	Feb	Mar	April	May	Jun	Jul	Aug	Sept	Oct	Nov	Dec	Total
F/NA	0	0	1	0	0	0	1	0	0	1	0	0	3
F/WA	1	0	0	0	0	0	0	0	0	0	0	0	1
FANF	22	15	13	12	10	19	14	15	17	36	32	25	230
Arson	1	0	0	0	0	0	0	0	0	0	1	0	2
Auto	0	0	0	0	0	0	0	1	1	0	0	1	3
Trash	0	0	0	3	0	0	2	5	13	3	0	0	26
Crm Ms	0	0	0	0	0	0	0	0	0	1	1	0	2
Other	0	1	1	0	1	1	0	0	4	0	0	0	8
Total	24	16	15	15	11	20	17	21	35	41	34	26	274

## Emergency Preparedness:

### **Preparing you for Emergencies: The University of Louisville Emergency Operations Plan**

The University of Louisville has adopted the UofL Alert Guidelines as its policies and procedure for immediately notifying the campus community upon confirmation of a significant emergency or other dangerous situation that involves an immediate threat to the health and safety of students, staff, faculty and campus visitors. The UofL Alert Guidelines is attached to the report as Appendix **XX**.

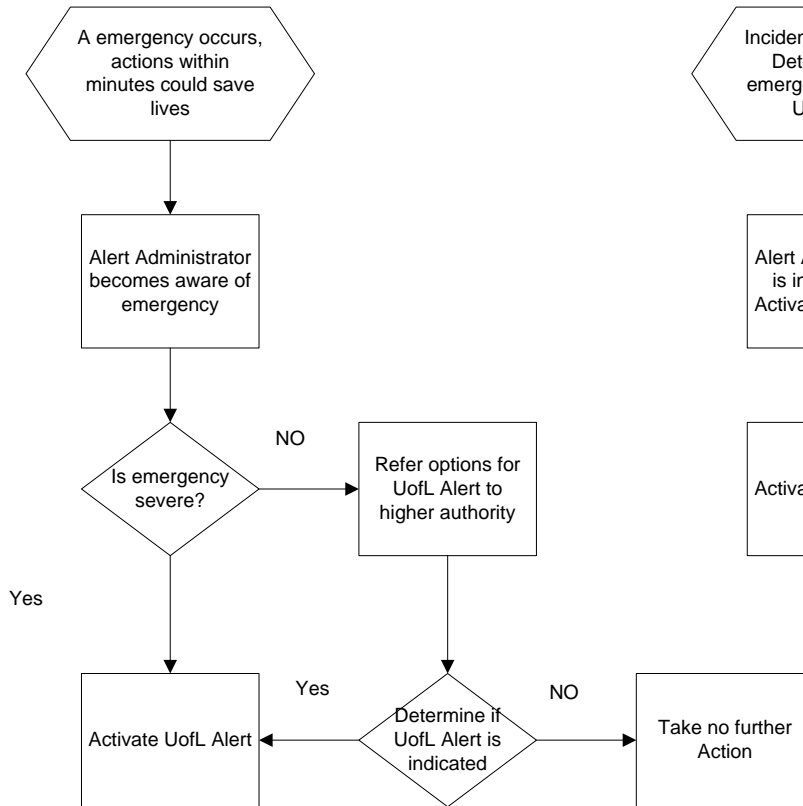
It is the University's intent to immediately, and without delay, taking into account the safety of the community, determine the content of the notification and initiate the emergency notification system, unless the notification will, in the professional judgment of responsible authorities, compromise efforts to assist victims or to contain, respond to, or otherwise mitigate the emergency.

UofL Alert can be activated during emergencies in two types of situations:

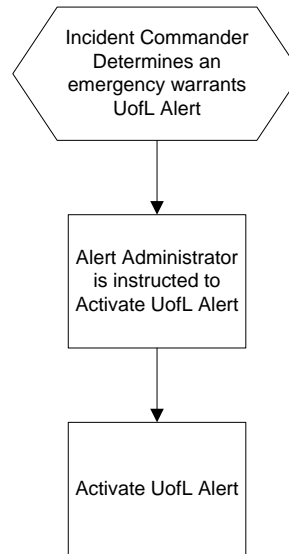
- Situation 1 – an Alert Administrator becomes aware of an emergency that requires immediate notification to the campus community in order to save lives or prevent injuries. Once the Alert Administrator determines that the emergency warrants campus notification, they activate the UofL Alert system.
- Situation 2 – the Incident Commander on the scene of an emergency determines that a UofL Alert activation is necessary. The IC then directs an Alert Administrator to activate the system. The Alert Administrator activates the system and makes the notification as per the directions of the IC.

This process is graphically depicted in the following flow chart:

## Situation 1



## Situation 2



The judgment of the Alert Administrator is the guiding point for an emergency activation. Alert Administrators are individuals designated to activate the UofL Alert system represent the following groups:

- Department of Public Safety Telecommunications Specialists
- Office of Communications and Marketing Personnel
- U of L Police (Chief, Asst. Chief and Majors)
- Department of Environmental Health and Safety (Director and Assistant Director)
- Vice President for Business Affairs ( Vice President, Technology Coordinator, Planning Coordinator)
- Information Technology (System Analyst and VOIP Network Administrator)

A current list of Alert Administrators is included in the UofL Alert Guidelines.

Alert Administrators use two charts to make a determination if an emergency notification is warranted and what communication modalities should be used.

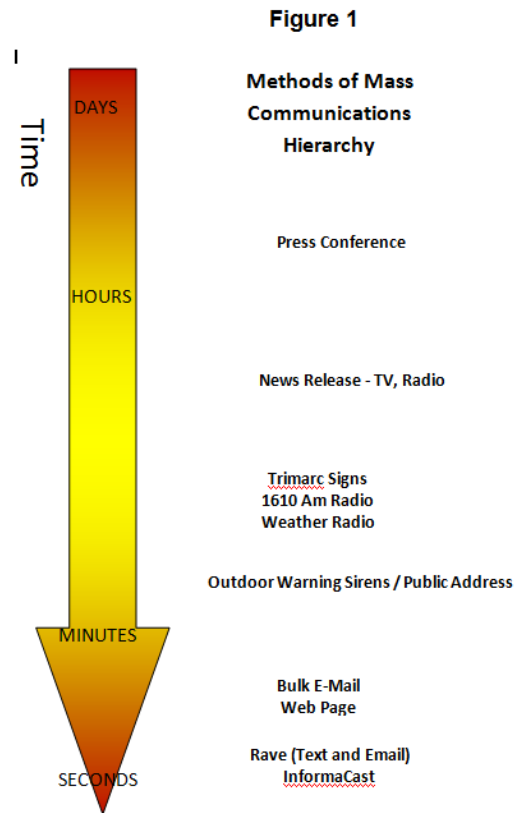


Figure 1 outlines the hierarchy of communication modalities.

**Figure 2**

**Approval Hierarchy**

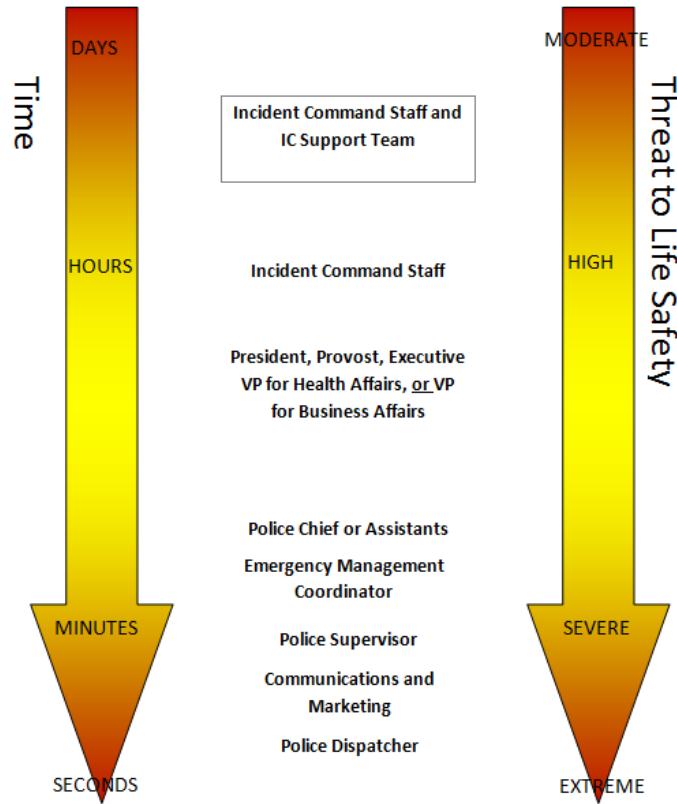


Figure 2 demonstrates the determination used to make an emergency notification

If an emergency requires communication that exceeds the campus community, the University has a relationship in place to utilize city assets for emergency notifications and for the city to use the University assets. In the event an emergency occurs off campus and the Louisville Metro Emergency Management Agency determines that the emergency may impact the University, they will contact the University to request that we implement UofL Alert. In return, if the emergency is moving outside the boundaries of the University's campus a notification will be made to Louisville Metro Safe via a phone. Louisville Metro will use its emergency notification plan to spread the message among the populations. % of the communication modalities in the UofL Alert Guidelines are operated by Louisville Metro.

During 2010, the UofL Alert System was tested in conjunction with the Kentucky annual statewide tornado drill. The notification used 6 modalities to notify faculty, staff, students and visitors to review the actions they would take during a real tornado. This exercise was conducted at 10:07 a.m. on Tuesday March 16, 2010. This was an announced drill.

In addition to the drill, the UofL Alert was activated 11 times from January 1, 2010 until July 31, 2010. Most of these were for school closures due to weather (8) and testing the UofL Alert System (3).

## Missing Student Notification:

University of Louisville

### Missing Persons Policy (to be posted on the UofL Housing Website)

This policy has been designed to comply with the Higher Education Opportunity Act of 2008 for colleges and universities to establish a missing person policy for its on-campus residents.

**Definitions.** For the purpose of this policy, the following definitions apply:

- **A student resident** is any student who is living in a residence facility located on university property and managed within the university resident student license procedure. The facilities include: Bettie Johnson Hall, Billy Minardi Hall, Center Hall, Community Park, Kurz Hall, Louisville Hall, Medical Dental Apartments, Miller Hall, Threlkeld Hall, Unitas Tower, University Tower Apartments, Wellness House, and West Hall.
- **A missing person** is anyone whose absence is contrary to his/her usual pattern of behavior and it is suspected that unusual circumstances may have caused the absence.

**Collection of information.** Housing and Residence Life will ask students to provide the missing person's contact information as part of the student application for living on campus.

**Investigation.** The University of Louisville Police Department (ULPD) will serve as the lead in the investigation. Housing and Residence Life staff will assist as requested.

**Notification.** In the event a student resident is considered to be missing, Housing staff will notify the ULPD who will serve as the lead in the investigation and coordinate subsequent notifications.

## University Protocol

(To be included in Housing Procedural Manual and with the UofL Emergency Response group)

### I. Definitions.

- a. **A student resident** is any student who is living in a residence facility located on university property and managed within the university resident student license procedure. Facilities include: Bettie Johnson Hall, Billy Minardi Hall, Center Hall, Community Park, Kurz Hall, Louisville Hall, Medical Dental Apartments, Miller Hall, Threlkeld Hall, Unitas Tower, University Tower Apartments, Wellness House, and West Hall.
- b. **A missing person** is anyone whose absence is contrary to his/her usual pattern of behavior and it is suspected that unusual circumstances may have caused the absence. Such circumstances could include, but are not limited to, a report or suspicion that the missing person may be the victim of foul play, has expressed suicidal thoughts or actions,

is in a life-threatening situation, or has not been seen or heard from by fellow community residents, friends, roommates, or staff.

**II. Collection of “missing person” information.**

- a. Student residents will be asked to provide missing persons contact information as part of the initial application for Housing form.
- b. The contact person(s) designated by the student will become the primary contact(s) during a missing person investigation.
- c. The missing person contact information provided is confidential and will only be used in the case that the student is considered missing.
- d. If the missing student resident is under the age of 18, or is not emancipated, the following will occur:
  - i. the parents/guardian will be notified of the situation regardless of the missing person contact information
  - ii. ULPD will follow the state mandated Amber Alert (KRS 16.175) protocol.

**III. Investigation.**

- a. At the time any University Housing staff person is alerted to a possible missing person, the staff member will notify the Professional Staff member on call who will take the lead in the initial investigation of where the student may be. The on call staff member will
  1. Notify ULPD to become involved
  2. Identify the student’s missing person’s contact information
  3. Notify the director of Housing or designee of the situation
  4. Assist ULPD on the initial investigation that includes, but is not limited to
    - a. providing the missing person’s contact information to ULPD
    - b. looking through the student’s room and residence hall community area to try to determine where the student may have gone
    - c. talking with community residents and staff to determine whether anyone has seen or talked with the student
    - d. Gathering any other information that may help locate the student.
- b. As the investigation continues and the student is not located within 1-2 hours, the on call staff member will:
  - i. Update the director of Housing or designee who in turn will notify the Dean of Students Office
  - ii. Assist ULPD (who serves as the lead in the investigation) as requested. A more wide-spread look at campus connections such as the following will occur:
    1. The student’s class schedule will be accessed and faculty contacted to determine whether the student has attended class or been involved in class activity.

2. If the student is a member of an organization, the organization will be contacted in effort to see if the student has been in contact or participated in events.
- c. Within 24 hours:
  - i. The missing person's contact will be notified. If the missing person contact is not provided, the parent/guardian or permanent address will be contacted.
  - ii. The vice president of Student Affairs, provost, media services or other administration will be notified.
- d. ULPD will determine if at any time the missing person's contact should be notified based upon the findings of the investigation.

#### **IV. Notification and Communication.**

- a. ULPD will be responsible for
  - i. determining at what time local police agencies may be informed of the situation
  - ii. designating who will contact the missing person contact
  - iii. designating who will contact University administration, Communications and Marketing or other personnel who should be notified
  - iv. Determining the need to implement the University Alert System (Rave and Informacast) to assist with locating the missing student resident.
- b. Communications and Marketing will be responsible for contacting outside media and coordinating interviews and press releases

For each of the following criminal offenses, enter the number reported to have occurred On Campus.

Criminal offense	Total occurrences On campus		
	2008	2009	2010
a. <u>Murder/Non-negligent manslaughter</u>	0	<input type="text" value="0"/>	<input type="text" value="0"/>
b. <u>Negligent manslaughter</u>	0	<input type="text" value="0"/>	<input type="text" value="0"/>
c. <u>Sex offenses - Forcible</u>	4	<input type="text" value="0"/>	<input type="text" value="1"/>
d. <u>Sex offenses - Non-forcible</u>	0	0	0
Incest		<input type="text" value="0"/>	<input type="text" value="0"/>
Statutory rape		<input type="text" value="0"/>	<input type="text" value="0"/>
e. <u>Robbery</u>	6	<input type="text" value="8"/>	<input type="text" value="0"/>
f. <u>Aggravated assault</u>	0	<input type="text" value="10"/>	<input type="text" value="1"/>
g. <u>Burglary</u>	43	<input type="text" value="42"/>	<input type="text" value="17"/>
h. <u>Motor vehicle theft</u> (Do not include theft from a motor vehicle)	4	<input type="text" value="8"/>	<input type="text" value="4"/>
i. <u>Arson</u>	2	<input type="text" value="0"/>	<input type="text" value="2"/>

**Caveat:**

If you have changed prior years' data, you must add a caveat explaining the change. Use the following format: "For (YEAR), Line (X) was changed from (A) to (B) because (REASON)."

Institution: University of Louisville (157289) - Main Campus (001)

User ID: C11572891

## Criminal Offenses - On-campus Student Housing Facilities

Of those criminal offenses reported to have occurred On Campus, enter the number that occurred in On-campus Student Housing Facilities.

Criminal offense	Total occurrences in On-Campus Student Housing Facilities		
	2008	2009	2010
a. <u>Murder/Non-negligent manslaughter</u>	0	<input type="text" value="0"/>	<input type="text" value="0"/>
b. <u>Negligent manslaughter</u>	0	<input type="text" value="0"/>	<input type="text" value="0"/>

c. <u>Sex offenses - Forcible</u>	3	<input type="text" value="0"/>	<input type="text" value="0"/>
d. <u>Sex offenses - Non-forcible</u>	0	0	0
Incest		<input type="text" value="0"/>	<input type="text" value="0"/>
Statutory rape		<input type="text" value="0"/>	<input type="text" value="0"/>
e. <u>Robbery</u>	1	<input type="text" value="3"/>	<input type="text" value="0"/>
f. <u>Aggravated assault</u>	0	<input type="text" value="3"/>	<input type="text" value="0"/>
g. <u>Burglary</u>	22	<input type="text" value="23"/>	<input type="text" value="11"/>
h. <u>Motor vehicle theft</u> (Do not include theft from a motor vehicle)	0	<input type="text" value="0"/>	<input type="text" value="0"/>
i. <u>Arson</u>	0	<input type="text" value="0"/>	<input type="text" value="1"/>

**Caveat:**

If you have changed prior years' data, you must add a caveat explaining the change. Use the following format: "For (YEAR), Line (X) was changed from (A) to (B) because (REASON)."

Institution: University of Louisville (157289) - Main Campus (001)

User ID: C11572891

## Criminal Offenses - Noncampus

For each of the following criminal offenses, enter the number reported to have occurred in or on Noncampus buildings or property.

Criminal offense	Total occurrences in or on Noncampus buildings or property		
	2008	2009	2010
a. <u>Murder/Non-negligent manslaughter</u>	0	<input type="text" value="0"/>	<input type="text" value="0"/>
b. <u>Negligent manslaughter</u>	0	<input type="text" value="0"/>	<input type="text" value="0"/>
c. <u>Sex offenses - Forcible</u>	0	<input type="text" value="0"/>	<input type="text" value="0"/>
d. <u>Sex offenses - Non-Forcible</u>	0	0	0
Incest		<input type="text" value="0"/>	<input type="text" value="0"/>
Statutory rape		<input type="text" value="0"/>	<input type="text" value="0"/>
e. <u>Robbery</u>	0	<input type="text" value="0"/>	<input type="text" value="0"/>

f. <u>Aggravated assault</u>	0	<input type="text" value="0"/>	<input type="text" value="0"/>
g. <u>Burglary</u>	0	<input type="text" value="1"/>	<input type="text" value="1"/>
h. <u>Motor vehicle theft</u> (Do not include theft from a motor vehicle)	0	<input type="text" value="0"/>	<input type="text" value="0"/>
i. <u>Arson</u>	0	<input type="text" value="0"/>	<input type="text" value="0"/>

**Caveat:**

If you have changed prior years' data, you must add a caveat explaining the change. Use the following format: "For (YEAR), Line (X) was changed from (A) to (B) because (REASON)."

Institution: University of Louisville (157289) - Main Campus (001)

User ID: C11572891

## Criminal Offenses - Public Property

For each of the following criminal offenses, enter the number reported to have occurred on Public Property.

Criminal offense	Total occurrences on Public Property		
	2008	2009	2010
a. <u>Murder/Non-negligent manslaughter</u>	2	<input type="text" value="0"/>	<input type="text" value="0"/>
b. <u>Negligent manslaughter</u>	0	<input type="text" value="0"/>	<input type="text" value="0"/>
c. <u>Sex offenses - Forcible</u>	1	<input type="text" value="0"/>	<input type="text" value="0"/>
d. <u>Sex offenses - Non-forcible</u>	0	0	0
Incest		<input type="text" value="0"/>	<input type="text" value="0"/>
Statutory rape		<input type="text" value="0"/>	<input type="text" value="0"/>
e. <u>Robbery</u>	2	<input type="text" value="3"/>	<input type="text" value="1"/>
f. <u>Aggravated assault</u>	0	<input type="text" value="8"/>	<input type="text" value="1"/>
g. <u>Burglary</u>	0	<input type="text" value="0"/>	<input type="text" value="0"/>
h. <u>Motor vehicle theft</u> (Do not include theft from a motor vehicle)	5	<input type="text" value="5"/>	<input type="text" value="1"/>
i. <u>Arson</u>	1	<input type="text" value="1"/>	<input type="text" value="0"/>

**Caveat:**

If you have changed prior years' data, you must add a caveat explaining the change. Use the following format: "For (YEAR), Line (X) was changed from (A) to (B) because (REASON)."





(Do not include theft from a motor vehicle)								
i. <u>Arson</u>	0	<input type="text" value="0"/>	<input type="text" value="0"/>	<input type="text" value="0"/>	<input type="text" value="0"/>	<input type="text" value="0"/>	<input type="text" value="0"/>	<input type="text" value="0"/>
j. <u>Simple assault</u>	0	<input type="text" value="0"/>	<input type="text" value="0"/>	<input type="text" value="0"/>	<input type="text" value="0"/>	<input type="text" value="0"/>	<input type="text" value="0"/>	<input type="text" value="0"/>
k. <u>Larceny-theft</u>		<input type="text" value="0"/>	<input type="text" value="0"/>	<input type="text" value="0"/>	<input type="text" value="0"/>	<input type="text" value="0"/>	<input type="text" value="0"/>	<input type="text" value="0"/>
l. <u>Intimidation</u>		<input type="text" value="0"/>	<input type="text" value="0"/>	<input type="text" value="0"/>	<input type="text" value="0"/>	<input type="text" value="0"/>	<input type="text" value="0"/>	<input type="text" value="0"/>
m. <u>Destruction/damage/vandalism of property</u>		<input type="text" value="0"/>	<input type="text" value="0"/>	<input type="text" value="0"/>	<input type="text" value="0"/>	<input type="text" value="0"/>	<input type="text" value="0"/>	<input type="text" value="0"/>

**Caveat:**

If you have changed prior years' data, you must add a caveat explaining the change. Use the following format: "For (YEAR), Line (X) was changed from (A) to (B) because (REASON)."



b. <u>Negligent manslaughter</u>								
c. <u>Sex offenses - Forcible</u>	0	0	0	0	0	0	0	0
d. <u>Sex offenses - Non-forcible</u>	0	0	0	0	0	0	0	0
Incest		0	0	0	0	0	0	0
Statutory rape		0	0	0	0	0	0	0
e. <u>Robbery</u>	0	0	0	0	0	0	0	0
f. <u>Aggravated assault</u>	0	0	0	0	0	0	0	0
g. <u>Burglary</u>	0	0	0	0	0	0	0	0
h. <u>Motor vehicle theft</u> (Do not include theft from a motor vehicle)	0	0	0	0	0	0	0	0
i. <u>Arson</u>	0	0	0	0	0	0	0	0
j. <u>Simple assault</u>	0	0	0	0	0	0	0	0
k. <u>Larceny-theft</u>		0	0	0	0	0	0	0
l. <u>Intimidation</u>		0	0	0	0	0	0	0
m. <u>Destruction/damage/vandalism of property</u>		0	0	0	0	0	0	0

**Caveat:**

If you have changed prior years' data, you must add a caveat explaining the change. Use the following format: "For (YEAR), Line (X) was changed from (A) to (B) because (REASON)."









f. <u>Aggravated assault</u>	0	<input type="text" value="0"/>	<input type="text" value="0"/>	<input type="text" value="0"/>	<input type="text" value="0"/>	<input type="text" value="0"/>	<input type="text" value="0"/>	<input type="text" value="0"/>
g. <u>Burglary</u>	0	<input type="text" value="0"/>	<input type="text" value="0"/>	<input type="text" value="0"/>	<input type="text" value="0"/>	<input type="text" value="0"/>	<input type="text" value="0"/>	<input type="text" value="0"/>
h. <u>Motor vehicle theft</u> (Do not include theft from a motor vehicle)	0	<input type="text" value="0"/>	<input type="text" value="0"/>	<input type="text" value="0"/>	<input type="text" value="0"/>	<input type="text" value="0"/>	<input type="text" value="0"/>	<input type="text" value="0"/>
i. <u>Arson</u>	0	<input type="text" value="0"/>	<input type="text" value="0"/>	<input type="text" value="0"/>	<input type="text" value="0"/>	<input type="text" value="0"/>	<input type="text" value="0"/>	<input type="text" value="0"/>
j. <u>Simple assault</u>	0	<input type="text" value="0"/>	<input type="text" value="0"/>	<input type="text" value="0"/>	<input type="text" value="0"/>	<input type="text" value="0"/>	<input type="text" value="0"/>	<input type="text" value="0"/>
k. <u>Larceny-theft</u>		<input type="text" value="0"/>	<input type="text" value="0"/>	<input type="text" value="0"/>	<input type="text" value="0"/>	<input type="text" value="0"/>	<input type="text" value="0"/>	<input type="text" value="0"/>
l. <u>Intimidation</u>		<input type="text" value="0"/>	<input type="text" value="0"/>	<input type="text" value="0"/>	<input type="text" value="0"/>	<input type="text" value="0"/>	<input type="text" value="0"/>	<input type="text" value="0"/>
m. <u>Destruction/damage/vandalism of property</u>		<input type="text" value="0"/>	<input type="text" value="0"/>	<input type="text" value="0"/>	<input type="text" value="0"/>	<input type="text" value="0"/>	<input type="text" value="0"/>	<input type="text" value="0"/>

**Caveat:**

If you have changed prior years' data, you must add a caveat explaining the change. Use the following format: "For (YEAR), Line (X) was changed from (A) to (B) because (REASON)."

▲

▼

◀

▶

Institution: University of Louisville (157289) - Main Campus (001)

User ID: C11572891

## Arrests - On campus

Enter the number of Arrests for each of the following crimes that occurred On Campus.

**Do NOT include drunkenness or driving under the influence in Liquor law violations.**

Crime	Number of Arrests		
	2008	2009	2010
a. <u>Weapons: carrying, possessing, etc.</u>	1	<input type="text" value="1"/>	<input type="text" value="3"/>
b. <u>Drug abuse violations</u>	9	<input type="text" value="11"/>	<input type="text" value="11"/>
c. <u>Liquor law violations</u>	20	<input type="text" value="9"/>	<input style="border: 1px solid gray; border-bottom: none;" type="text" value="26"/>

**Caveat:**

If you have changed prior years' data, you must add a caveat explaining the change. Use the following format: "For (YEAR), Line (X) was changed from (A) to (B) because (REASON)."


Institution: University of Louisville (157289) - Main Campus (001)

User ID: C11572891

## Arrests - On-campus Student Housing Facilities

Of those **Arrests** for crimes that occurred **On Campus**, enter the number of crimes that occurred in **On-campus Student Housing Facilities** for each of the following categories.

**Do NOT include drunkenness or driving under the influence in Liquor law violations.**

Crime	Number of Arrests		
	2008	2009	2010
a. <u>Weapons: carrying, possessing, etc.</u>	0	<input type="text" value="0"/>	<input type="text" value="1"/>
b. <u>Drug abuse violations</u>	0	<input type="text" value="9"/>	<input type="text" value="9"/>
c. <u>Liquor law violations</u>	0	<input type="text" value="5"/>	 <input type="text" value="19"/>

**Caveat:**

If you have changed prior years' data, you must add a caveat explaining the change. Use the following format: "For (YEAR), Line (X) was changed from (A) to (B) because (REASON)."

Institution: University of Louisville (157289) - Main Campus (001)

User ID: C11572891

## Arrests - Noncampus

Enter the number of **Arrests** for each of the following crimes that occurred in or on **Noncampus** buildings or property.

**Do NOT include drunkenness or driving under the influence in Liquor law violations.**

Number of Arrests

Crime	2008	2009	2010
a. <u>Weapons: carrying, possessing, etc.</u>	0	<input type="text" value="0"/>	<input type="text" value="0"/>
b. <u>Drug abuse violations</u>	0	<input type="text" value="0"/>	<input type="text" value="1"/>
c. <u>Liquor law violations</u>	0	<input type="text" value="0"/>	<input type="text" value="1"/>

**Caveat:**

If you have changed prior years' data, you must add a caveat explaining the change. Use the following format: "For (YEAR), Line (X) was changed from (A) to (B) because (REASON)."

Institution: University of Louisville (157289) - Main Campus (001)

User ID: C11572891

## Arrests - Public Property

Enter the number of Arrests for each of the following crimes that occurred on Public Property.

**Do NOT include drunkenness or driving under the influence in Liquor law violations.**

Crime	Number of Arrests		
	2008	2009	2010
a. <u>Weapons: carrying, possessing, etc.</u>	0	<input type="text" value="0"/>	<input type="text" value="1"/>
b. <u>Drug abuse violations</u>	8	<input type="text" value="13"/>	<input type="text" value="13"/>
c. <u>Liquor law violations</u>	0	<input type="text" value="2"/>	<input type="text" value="1"/>

**Caveat:**

If you have changed prior years' data, you must add a caveat explaining the change. Use the following format: "For (YEAR), Line (X) was changed from (A) to (B) because (REASON)."

Institution: University of Louisville (157289) - Main Campus (001)

User ID: C11572891

## Disciplinary Actions - On Campus

Enter the number of persons referred for disciplinary action for crimes that occurred On Campus for each of the following categories.

**Do not include disciplinary actions that were strictly for school policy violations.**

**If the disciplinary action is the result of an arrest, please do not count it here; count the violation as 1 arrest.**

**Do NOT include drunkenness or driving under the influence in Liquor law violations.**

Crime	Number of persons referred for Disciplinary Action		
	2008	2009	2010
a. <u>Weapons: carrying, possessing, etc.</u>	5	<input type="text" value="2"/>	<input type="text" value="4"/>
b. <u>Drug abuse violations</u>	9	<input type="text" value="18"/>	<input type="text" value="15"/>
c. <u>Liquor law violations</u>	16	<input type="text" value="24"/>	<input type="text" value="16"/>

**Caveat:**

If you have changed prior years' data, you must add a caveat explaining the change. Use the following format: "For (YEAR), Line (X) was changed from (A) to (B) because (REASON)."

Institution: University of Louisville (157289) - Main Campus (001)

User ID: C11572891

## Disciplinary Actions - On-campus Student Housing Facilities

Enter the number of persons referred for disciplinary action for crimes that occurred in On-campus Student Housing Facilities for each of the following categories.

**Do not include disciplinary actions that were strictly for school policy violations.**

**If the disciplinary action is the result of an arrest, please do not count it here; count the violation as 1 arrest.**

**Do NOT include drunkenness or driving under the influence in Liquor law violations.**

Crime	Number of persons referred for Disciplinary Action		
	2008	2009	2010
a. <u>Weapons: carrying, possessing, etc.</u>	0	<input type="text" value="0"/>	<input type="text" value="3"/>
b. <u>Drug abuse violations</u>	0	<input type="text" value="0"/>	<input type="text" value="7"/>
c. <u>Liquor law violations</u>	0	<input type="text" value="0"/>	<input type="text" value="8"/>

**Caveat:**

If you have changed prior years' data, you must add a caveat explaining the change. Use the following format: "For (YEAR), Line (X) was changed from (A) to (B) because (REASON)."

Institution: University of Louisville (157289) - Main Campus (001)

User ID: C11572891

## Disciplinary Actions - Noncampus

Enter the number of persons referred for disciplinary action for crimes that occurred in or on Noncampus buildings or property for each of the following categories.  
Do not include disciplinary actions that were strictly for school policy violations.  
If the disciplinary action is the result of an arrest, please do not count it here; count the violation as 1 arrest.

**Do NOT include drunkenness or driving under the influence in Liquor law violations.**

Crime	Number of persons referred for Disciplinary Action		
	2008	2009	2010
a. <u>Weapons: carrying, possessing, etc.</u>	0	<input type="text" value="0"/>	<input type="text" value="0"/>
b. <u>Drug abuse violations</u>	0	<input type="text" value="0"/>	<input type="text" value="0"/>
c. <u>Liquor law violations</u>	0	<input type="text" value="0"/>	<input type="text" value="0"/>

**Caveat:**

If you have changed prior years' data, you must add a caveat explaining the change. Use the following format: "For (YEAR), Line (X) was changed from (A) to (B) because (REASON)."

Institution: University of Louisville (157289) - Main Campus (001)

User ID: C11572891

## Disciplinary Actions - Public Property

Enter the number of persons referred for disciplinary action for crimes that occurred on Public Property for each of the following categories.  
Do not include disciplinary actions that were strictly for school policy violations.

If the disciplinary action is the result of an arrest, please do not count it here; count the violation as 1 arrest.

Do NOT include drunkenness or driving under the influence in Liquor law violations.

Crime	Number of persons referred for Disciplinary Action		
	2008	2009	2010
a. <u>Weapons: carrying, possessing, etc.</u>	0	<input type="text" value="0"/>	<input type="text" value="0"/>
b. <u>Drug abuse violations</u>	0	<input type="text" value="0"/>	<input type="text" value="0"/>
c. <u>Liquor law violations</u>	0	<input type="text" value="0"/>	<input type="text" value="0"/>

**Caveat:**

If you have changed prior years' data, you must add a caveat explaining the change. Use the following format: "For (YEAR), Line (X) was changed from (A) to (B) because (REASON)."

## 2011 Campus Safety and Security Survey

Institution: University of Louisville (157289) - Main Campus (001)

User ID: C11572891

### Fires - On-campus Student Housing Facilities

Enter the name, address and number of fires for each On-campus Student Housing Facility. After you click "Save," you will see an "Enter Data" button across from each facility that has 1 or more fires. For each of these facilities, click "Enter Data" to complete the fire statistics. If you use the button below to add a facility, or if you use the "Delete" link to delete a facility, you must return to the Screening Questionnaire to enter the number of On-campus Student Housing Facilities.

#### Housing Facilities

	Name of Facility	Street Address	2009	
			Number of Fires	
1	<input type="text" value="Bettie Johnson Hall"/>	<input type="text" value="401 W. Cardinal E"/>	<input type="text" value="0"/>	<input type="button" value="VIEW"/>
2	<input type="text" value="Billy Minardi Hall"/>	<input type="text" value="2040 S. Fourth St"/>	<input type="text" value="0"/>	<input type="button" value="VIEW"/>
3	<input type="text" value="Center Hall"/>	<input type="text" value="2110 Unity Place"/>	<input type="text" value="0"/>	<input type="button" value="VIEW"/>
4	<input type="text" value="Chi Omega Soror"/>	<input type="text" value="2018 Unity Place"/>	<input type="text" value="0"/>	<input type="button" value="VIEW"/>
5	<input type="text" value="Community Park"/>	<input type="text" value="2033 S.Fourth St"/>	<input type="text" value="0"/>	<input type="button" value="VIEW"/>
6	<input type="text" value="Delta Zeta Sororit"/>	<input type="text" value="2104 Unity Place"/>	<input type="text" value="0"/>	<input type="button" value="VIEW"/>
7	<input type="text" value="Kurz Hall"/>	<input type="text" value="1900 S. Fourth St"/>	<input type="text" value="0"/>	<input type="button" value="VIEW"/>



	Name of Facility	Street Address	2009 Number of Fires	
21	West Hall	2108-A Unity Plac	0	<input type="button" value="VIEW"/>
Page Total			0	

Pages: [1](#) [2](#)

**Caveat:**

▲
▼

◀
▶

Institution: University of Louisville (157289) - Main Campus (001)

User ID: C11572891

## Fires - On-campus Student Housing Facilities

Enter all the required data for each fire. For help in completing the screen, click on the "Need help? Click here for screen instructions" link at the top of the screen. After you complete this screen click on "Save." Next, click on the "Return to Fires - On-campus Student Housing Facilities Screen" button.

Housing Facility Name: **Unitas Towers** Housing Facility Address: **108 E. Cardinal Blvd**

On-campus Student Housing Facility

**2009**

	Category of Fire	Cause of Fire	Fire-related injuries	Fire-related deaths	Property damage	Action
1	Unintentional	Electrical	0	0	\$1,000-\$9,999	
	Total		0	0		

**Caveat:**

If you have changed prior years' data, you must add a caveat explaining the change. Use the following format: "For (YEAR), Line (X) was changed from (A) to (B) because (REASON)."

There w as an electri

▲
▼

◀
▶

## 2011 Campus Safety and Security Survey

Institution: University of Louisville (157289) - Main Campus (001)

User ID: C11572891

## Fires - On-campus Student Housing Facilities

Enter the name, address and number of fires for each On-campus Student Housing Facility. After you click "Save," you will see an "Enter Data" button across from each facility that has 1 or more fires. For each of these facilities, click "Enter Data" to complete the fire statistics. If you use the button below to add a facility, or if you use the "Delete" link to delete a facility, you must return to the Screening Questionnaire to update the number of On-campus Student Housing Facilities.

Housing Facilities			
	Name of Facility	Street Address	2010
			Number of Fires
1	Bettie Johnson Hall	401 W. Cardinal Blvd	<input type="text" value="0"/> <a href="#">VIEW</a>
2	Billy Minardi Hall	2040 S. Fourth St	<input type="text" value="0"/> <a href="#">VIEW</a>
3	Center Hall	2110 Unity Place	<input type="text" value="0"/> <a href="#">VIEW</a>
4	Chi Omega Sorority	2018 Unity Place	<input type="text" value="0"/> <a href="#">VIEW</a>
5	Community Park	2033 S. Fourth St	<input type="text" value="0"/> <a href="#">VIEW</a>
6	Delta Zeta Sorority	2104 Unity Place	<input type="text" value="0"/> <a href="#">VIEW</a>
7	Kurz Hall	1900 S. Fourth St	<input type="text" value="0"/> <a href="#">VIEW</a>
8	Lambda Chi Alpha	2100 Unity Place	<input type="text" value="0"/> <a href="#">VIEW</a>
9	Louisville Hall	318 W. Brandeis	<input type="text" value="0"/> <a href="#">VIEW</a>
10	Miller Hall	2001 S. First Street	<input type="text" value="0"/> <a href="#">VIEW</a>
11	Phi Kappa Tau	2106 Unity Place	<input type="text" value="0"/> <a href="#">VIEW</a>
12	Sigma Chi Fraternity	2030 Unity Place	<input type="text" value="0"/> <a href="#">VIEW</a>
13	Sigma Kappa Sorority	2026 Unity Place	<input type="text" value="0"/> <a href="#">VIEW</a>
14	Sigma Phi Epsilon	2034 Unity Place	<input type="text" value="0"/> <a href="#">VIEW</a>
15	Stevenson Hall	2121 S. First Street	<input type="text" value="0"/> <a href="#">VIEW</a>
16	Threlkeld Hall	120 E. Barbee Street	<input type="text" value="0"/> <a href="#">VIEW</a>
17	Triangle Fraternity	2022 Unity Place	<input type="text" value="0"/> <a href="#">VIEW</a>
18	Unitas Towers	108 E. Cardinal Blvd	<input type="text" value="1"/> <a href="#">VIEW</a>

19	University Tower	2000 Unity Place	1	<input type="button" value="VIEW"/>
20	Wellness House	2108-C Unity Place	0	<input type="button" value="VIEW"/>
Page Total			2	

Pages: 1 2

**Caveat:**

Institution: University of Louisville (157289) - Main Campus (001)

User ID: C11572891

## Fires - On-campus Student Housing Facilities

Enter the name, address and number of fires for each On-campus Student Housing Facility. After you click "Save," you will see an "Enter Data" button across from each facility that has 1 or more fires. For each of these facilities, click "Enter Data" to complete the fire statistics. If you use the button below to add a facility, or if you use the "Delete" link to delete a facility, you must return to the Screening Questionnaire to update the number of On-campus Student Housing Facilities.

### Housing Facilities

	Name of Facility	Street Address	2010	
			Number of Fires	
21	West Hall	2108-A Unity Place	0	<input type="button" value="VIEW"/>
Page Total			0	

Pages: 1 2

**Caveat:**

Institution: University of Louisville (157289) - Main Campus (001)

User ID: C11572891

## Fires - On-campus Student Housing Facilities

Enter all the required data for each fire. For help in completing the screen, click on the "Need help? Click here for screen" link.

instructions" link at the top of the screen. After you complete this screen click on "Save." Next, click on the "Return to Fires – On-campus Student Housing Facilities Screen" button.

Housing Facility Name: **Unitas Towers** Housing Facility Address: **108 E. Cardinal Blvd**

On-campus Student Housing Facility

2010

	<u>Category of Fire</u>	<u>Cause of Fire</u>	<u>Fire-related injuries</u>	<u>Fire-related deaths</u>	<u>Property damage</u>	<u>Action</u>
1	Intentional	burned paper	0	0	\$0-\$99	
	Total		0	0		

**Caveat:**

An unknown person

Institution: University of Louisville (157289) - Main Campus (001)

User ID: C11572891

## Fires - On-campus Student Housing Facilities

Enter all the required data for each fire. For help in completing the screen, click on the "Need help? Click here for screen instructions" link at the top of the screen. After you complete this screen click on "Save." Next, click on the "Return to Fires – On-campus Student Housing Facilities Screen" button.

Housing Facility Name: **University Towers Apar...** Housing Facility Address: **2000 Unity Place**

On-campus Student Housing Facility

2010

	<u>Category of Fire</u>	<u>Cause of Fire</u>	<u>Fire-related injuries</u>	<u>Fire-related deaths</u>	<u>Property damage</u>	<u>Action</u>
1	Unintentional	Electrical	0	0	\$1,000-\$9,999	
	Total		0	0		

**Caveat:**

## 2011 Campus Safety and Security Survey

Institution: University of Louisville (157289) - Main Campus (001)

User ID: C11572891

## Fires - Summary

Summary of Fires									
Name of Facility	2008			2009			2010		
	Fires	Injuries	Deaths	Fires	Injuries	Deaths	Fires	Injuries	Deaths
Bettie Johnson Hall				0	0	0	0	0	0
Billy Minardi Hall				0	0	0	0	0	0
Center Hall				0	0	0	0	0	0
Chi Omega Sorority				0	0	0	0	0	0
Community Park				0	0	0	0	0	0
Delta Zeta Sorority				0	0	0	0	0	0
Kurz Hall				0	0	0	0	0	0
Lambda Chi Alpha Fraternity				0	0	0	0	0	0
Louisville Hall				0	0	0	0	0	0
Miller Hall				0	0	0	0	0	0
Phi Kappa Tau				0	0	0	0	0	0
Sigma Chi Fraternity				0	0	0	0	0	0
Sigma Kappa Sorority				0	0	0	0	0	0
Sigma Phi Epsilon Fraternity				0	0	0	0	0	0
Stevenson Hall				0	0	0	0	0	0
Threlkeld Hall				0	0	0	0	0	0
Triangle Fraternity				0	0	0	0	0	0
Unitas Towers				1	0	0	1	0	0
University Towers Apartments				0	0	0	1	0	0
Wellness House				0	0	0	0	0	0
West Hall				0	0	0	0	0	0
Total				1	0	0	2	0	0

