

# Louisville and Louisville Neurosurgery

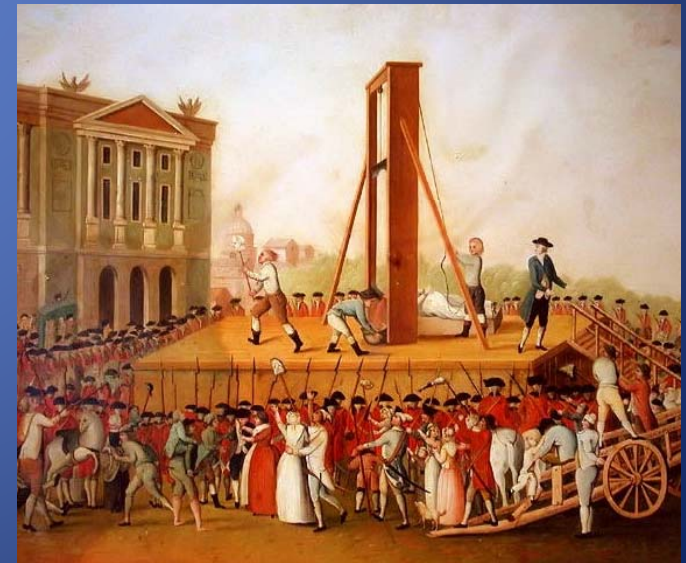
2013-2014 Recruitment Cycle

# First of All, How Do You Say It?

Louisville when spelled phonetically....

“Loo-ah-vul”

- Named after Louis XVI





# Why Is Louisville Where It Is?

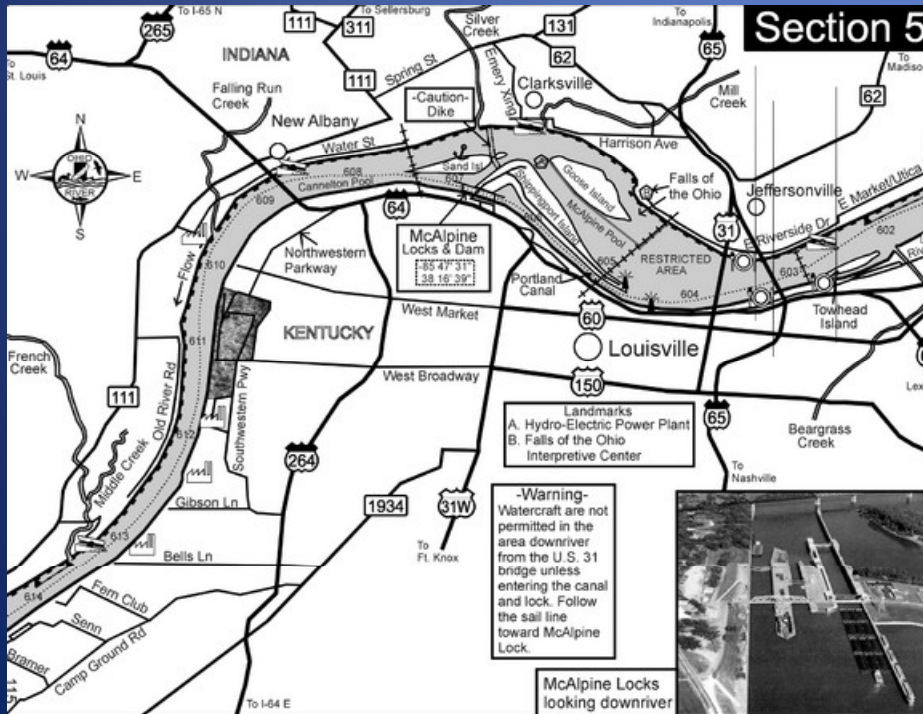
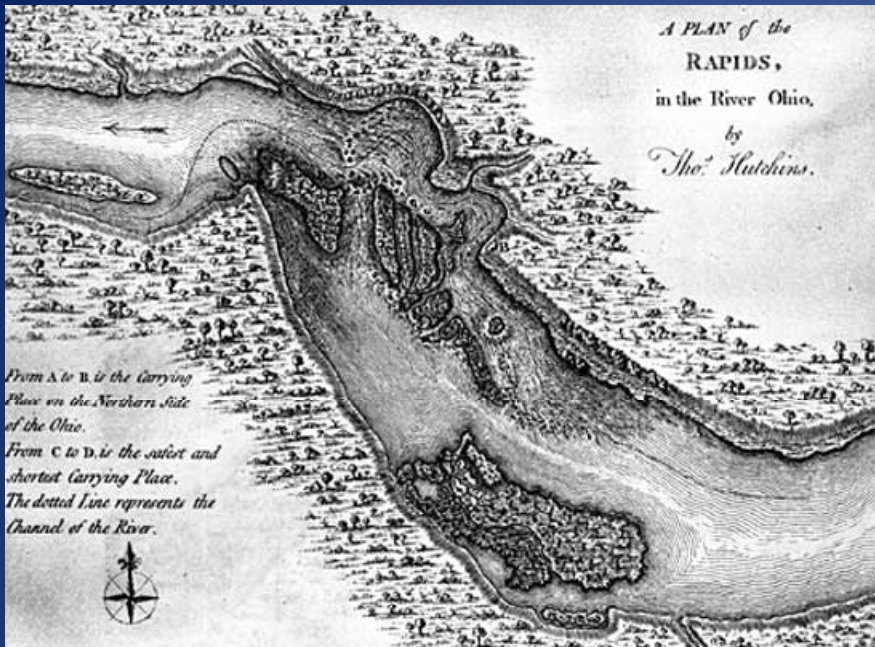




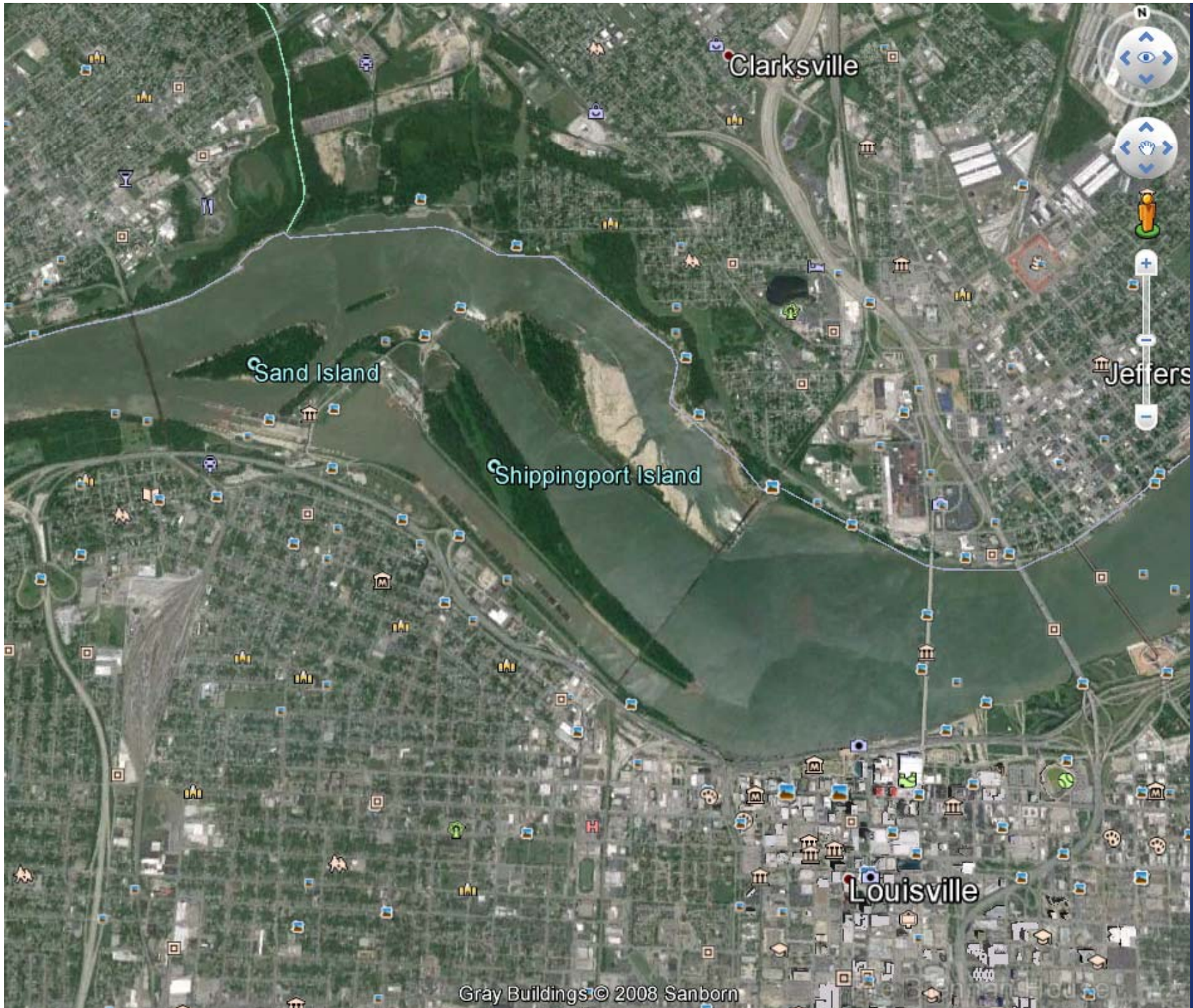
# River Travel











Gray Buildings © 2008 Sanborn



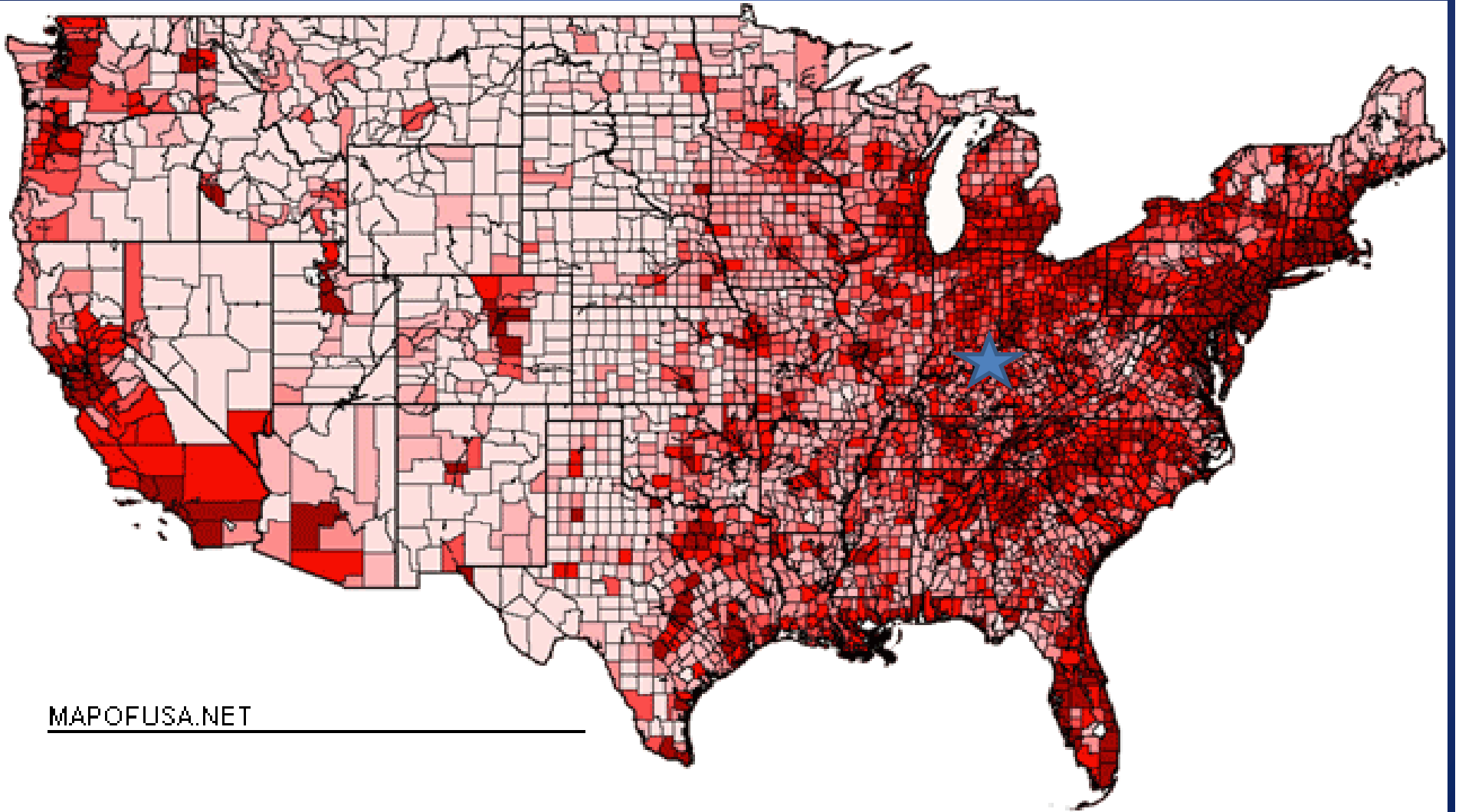








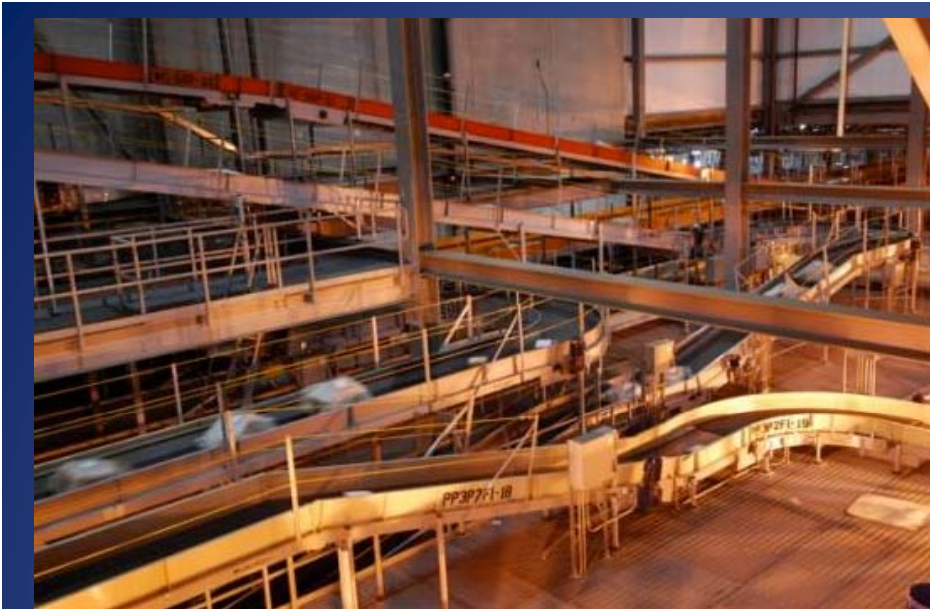
# USA Population Density



[MAPOFUSA.NET](http://MAPOFUSA.NET)



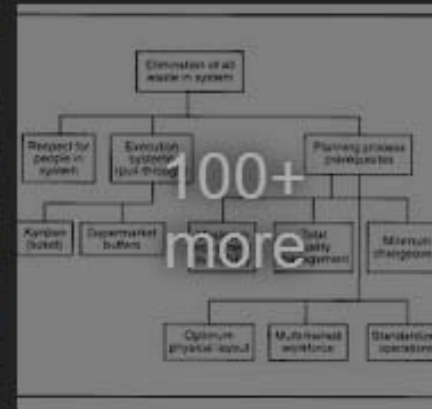
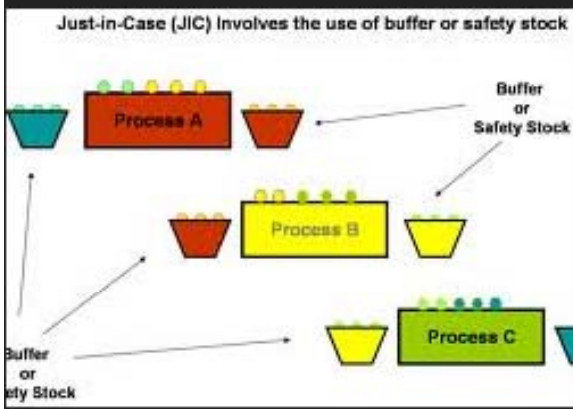
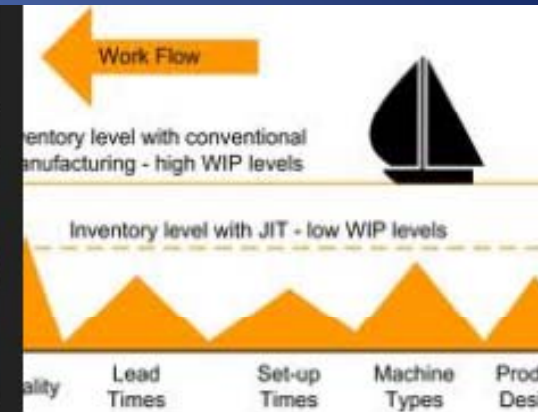
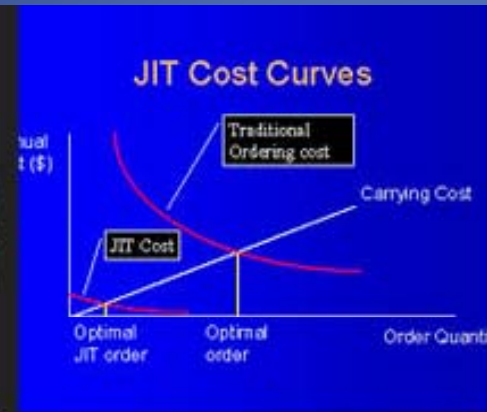






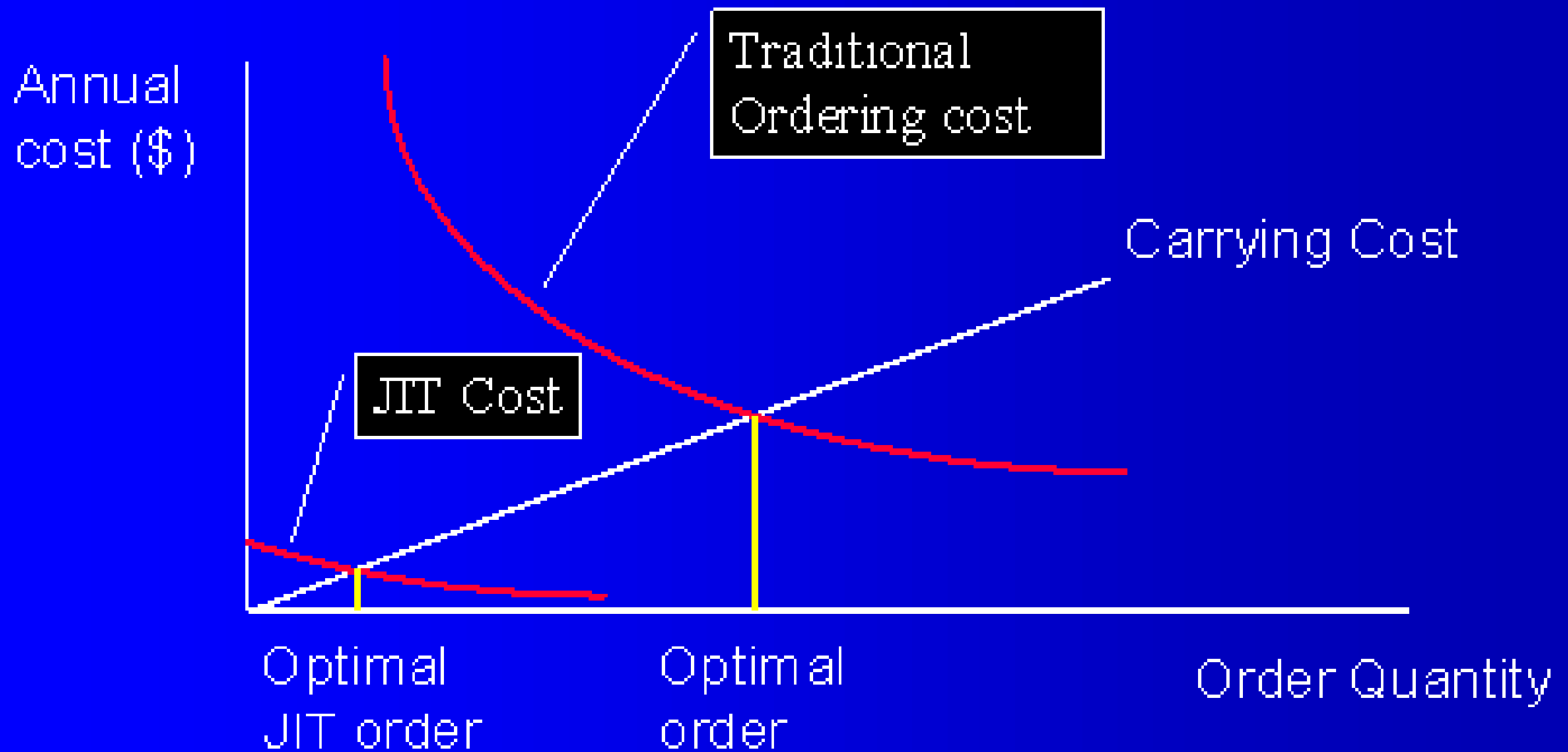


# Just in Time Inventory Processes





# JIT Cost Curves









New '13 Escape to be exported to some overseas markets.

Advertisement

LOUISVILLE, KY – Ford's new '13 Escape cross/utility







- Toyota Sales or Service Office\*
- Lexus Sales or Service Office\*
- Financial Services Office\*
- Manufacturing Facility†
- Contracted Manufacturer
- Supplier State
- Research and Development Center
- Design Center
- Hino Operation or Manufacturing Facility
- Holding Company

Dealerships Throughout the U.S.  
 \*May represent more than one location. †Toyota vehicles and components are built using U.S. and globally sourced parts.



**CAMRY** since 1988  
 (Camry Hybrid in KY since 2006)

**AVALON** since 1994

**VENZA** since 2008











Better Ingredients.  
Better Pizza.

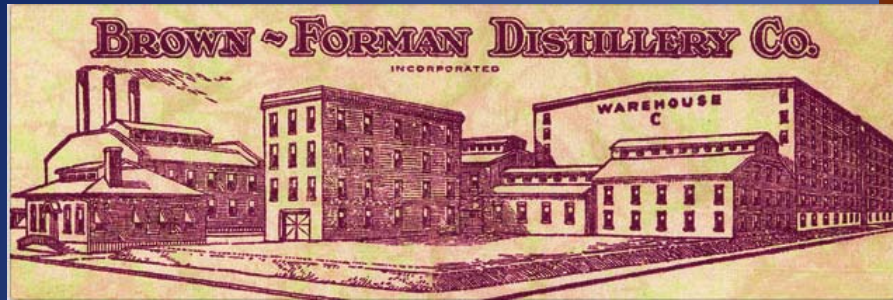




Iconic





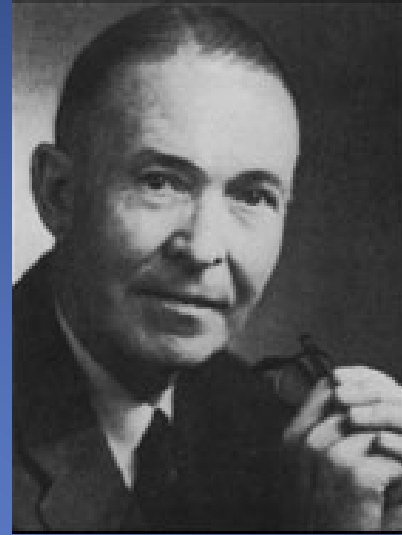








# Founding Program Director



- Doctor Roy Glenwood Spurling (1894-1968) stands as a prominent figure in the field of neurosurgery. His innovative contributions have left an indelible mark, particularly in the treatment of lumbar and cervical intervertebral disc diseases and peripheral nerve injuries. He was instrumental in founding the Harvey Cushing Society (later renamed the American Association of Neurological Surgeons) and the American Board of Neurological Surgery. Spurling was a major participant in the military during World War II; he was stationed at Walter Reed Hospital and in the European Theater, and later became well known for his care of General George S. Patton. Glen Spurling is a role model to a younger generation of neurosurgeons for his tireless effort toward the advancement of neurosurgery.



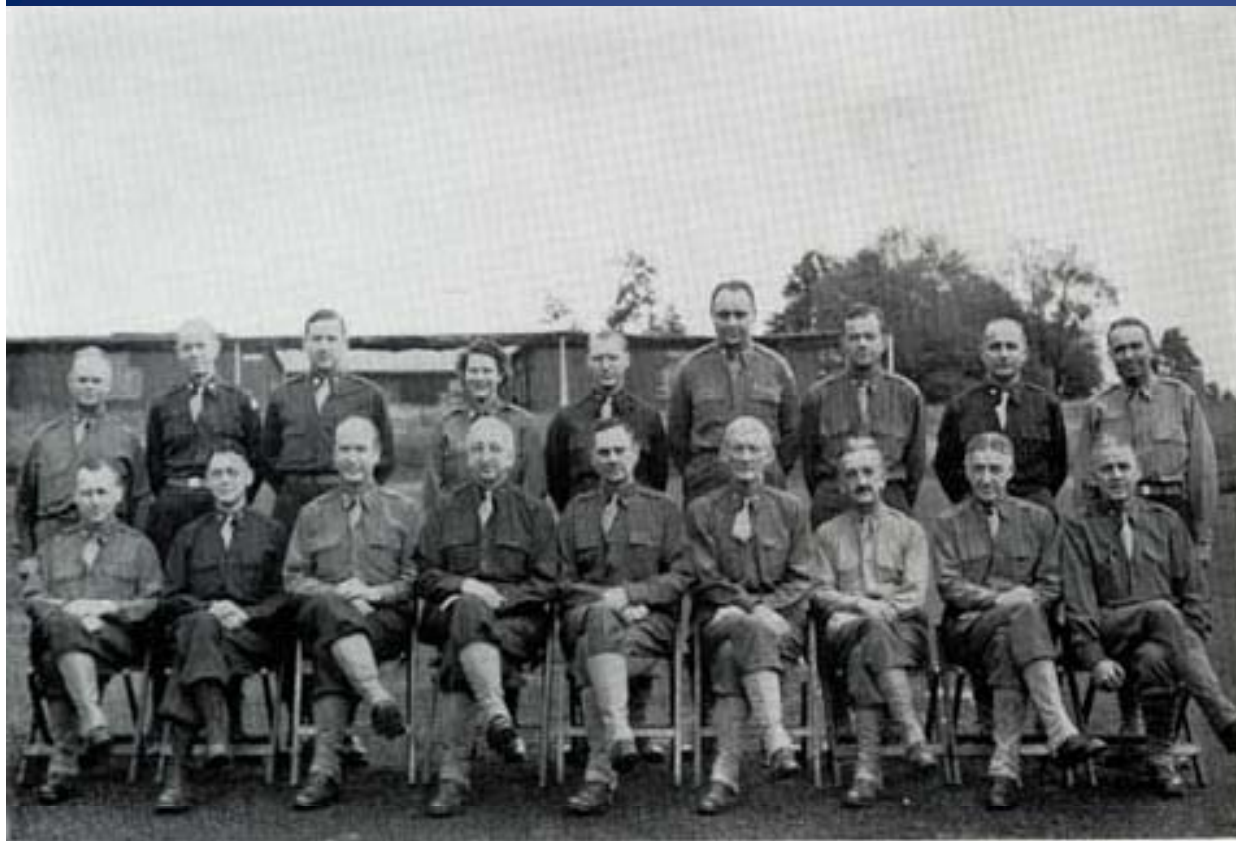
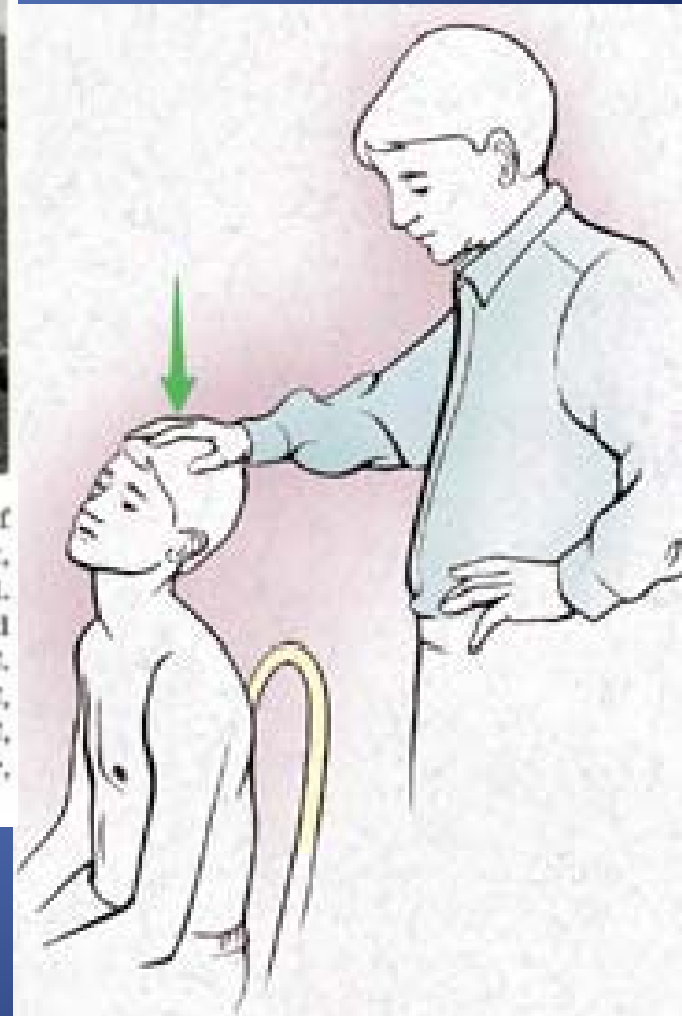


FIGURE 3.—Consultant group at Cheltenham, England, mid-1944, before the move of the Office of the Chief Surgeon, ETOUSA, to the Continent. First row, left to right, Lt. Col. Ralph M. Tovell, MC, Col. Donald M. Pillsbury, MC, Col. Derrick T. Vail, MC, Col. Roy A. Stout, DC, Col. James C. Kimbrough, MC, Col. Elliott C. Cutler, MC, Col. Lloyd J. Thompson, MC, Col. Thomas H. Lanman, MC, and Lt. Col. Mather Cleveland, MC. Second row, left to right, Lt. Col. Gordon E. Hein, MC, Lt. Col. Kenneth D. A. Allen, MC, Lt. Col. Norton Canfield, MC, Capt. Marion C. Loizeaux, MC, Capt. Wayne H. Jonson, MAC, Lt. Col. Eugene M. Bricker, MC, Maj. John N. Robinson, MC, Lt. Col. Robert M. Zollinger, MC, and Lt. Col. R. Glen Spurling, MC.



# Chairmen

- R. Glen Spurling
- 1962 Grantham
- Ludwig Segerberg
- 1972 Henry Garretson (recruited from MNI with expertise in vascular disease and epilepsy)

1994 Division became a Department,

- 1994 Chris Shields
- 2009 Jonathan Hodes
- 2013 Warren Boling



# Changes

New Partnership between Kentucky One and University of Louisville

Reduced activity at Baptist East Hospital

Increased Activity at Jewish Hospital

New Outreach

New Accreditation System of Evaluations

Curriculum Requirements

Assessment Tools

“The Only Constant is Change”

**Neurological Surgery Case Log Defined Case Categories  
and Required Minimum Numbers**

<b>Defined Case Category</b>		<b>Required Minimum Number</b>
<b>Adult Cranial</b>		
DC1	Craniotomy for brain tumor	60
DC2	Craniotomy for trauma	40
DC3a	Craniotomy for intracranial vascular lesion	40
DC3b	Endovascular therapy for tumor or vascular lesion	10
DC4	Craniotomy for pain	5
DC5	Transsphenoidal sellar/parasellar tumors (endoscopic and microsurgical)	15
DC6	Extracranial vascular procedures	5
DC7	Radiosurgery	10
DC8	Functional procedures	10
DC9	VP shunt	10
<b>Total Adult Cranial</b>		<b>205</b>
<b>Adult Spinal</b>		
DC10	Anterior Cervical Approaches for Decompression/Stabilization	25
DC11	Posterior Cervical Approaches for Decompression/Stabilization	15
DC12	Lumbar discectomy	25
DC13	Thoracic/lumbar instrumentation fusion	20
DC14	Peripheral nerve procedures	10
<b>Total Adult Spinal</b>		<b>95</b>
<b>Pediatric</b>		
DC15	Craniotomy for brain tumor	5
DC16	Craniotomy for trauma (uses adult trauma codes)	10
DC17	Spinal procedures	5
DC18	VP shunt	10
<b>Total Pediatric</b>		<b>30</b>
DC19	Adult and Pediatric Epilepsy	10
<b>Critical Care</b>		
DC20	ICP monitor placement	5
DC21	External ventricular drain	10
DC22	VP shunt tap/programming	10
DC23	Cervical spine traction	5
DC24	Stereotactic frame placement	5
DC25	CVP line placement	10
DC26	Airway management	10
DC27	Arterial line placement	10
DC28	Arteriography	25
<b>Total Critical Care</b>		<b>90</b>
<b>TOTAL ALL DEFINED CASE CATEGORIES</b>		<b>430</b>

**Reportable but Non-tracked Categories**

Craniofacial  
Spinal tumor/AVM



Day	Conference	Time	Frequency	Location	Attendants	Required Attendance
Tuesday	Neuroanatomy Series	12:00-1:00 pm	Last Tuesday of every other month	Nursing School Kwing 4003	Residents	80%
Tuesday	Epilepsy Surgery Grand Rounds	4:00 pm - 5:00 pm	3rd Tuesday/Month	ACB Metro Conference Room	Faculty, Residents, ARNPs	80%
Tuesday or Friday	Stroke/Vascular Multidisciplinary Conference	Varies	Once a Month	ACB Glass Room	Faculty & Residents	80%
Wednesday	House Council Staff	12:00 - 1:00 pm	2nd Wednesday/Month	Abell 110	PGY-3	100%
Thursday	Trauma QI Meeting	7:00 am-8:00 am	1st Thursday/Month	Glassroom - Basement ACB	Faculty, Residents, ARNPs	80%
Thursday	Professors' Rounds	7:00am - 8:00am	Every Thursday	ULH-5 West	Faculty, Residents, ARNPs	80%
	Grand Rounds	8:00am - 9:00am	Every Thursday August-June	Nursing School - KWING 4003	Faculty, Residents, ARNPs	80%
	Faculty Presentations	9:15am - 10:45 am	Every Thursday	Frazier Rehab or Rudd Heart & Lung	Faculty, Residents, ARNPs	80%
	Morbidity and Mortality Patient Safety Quality Improvement	12:00-1:30 pm	1x/Month	ACB Conference Rooms	Faculty, Residents, ARNPs	80%
	Journal Club	12:30-1:30 pm	1x/Month	Varies	Faculty, Residents	80%
	Resident Basic Science Presentations	2:00-3:00 pm	Every Thursday September-February	Frazier Rehab or Rudd Heart & Lung	Faculty, Residents	80%
	Multi-Disciplinary Neuro-Oncology Conference	11:00am - 12:00pm	Every Thursday	Radiation Oncology Conf. Room-Lower Level of Brown Cancer Center	Faculty, Residents	80%
	Dissection Lab	2:00-5:00 pm	Once a Month	CadaverLab-Med School	Residents	80%
Thursday	Seminars in Neuroscience	4:00 PM	Once a Month	Baxter I Auditorium	Faculty, Residents	80%
Friday	KSCIRC Seminar	12:00-1:00 pm	Every Friday	B Building room 302	Faculty & Residents	80%

# What Probably Won't Change

- 7 year program mandated
- Infrastructure that includes “Full Functioned University”
- Research Emphasis on Spinal Cord Injury and nervous tissue injury, KSIRC, Frazier Rehab
- Major Level 1 Trauma Center
- Faculty interest in Teaching and Research



