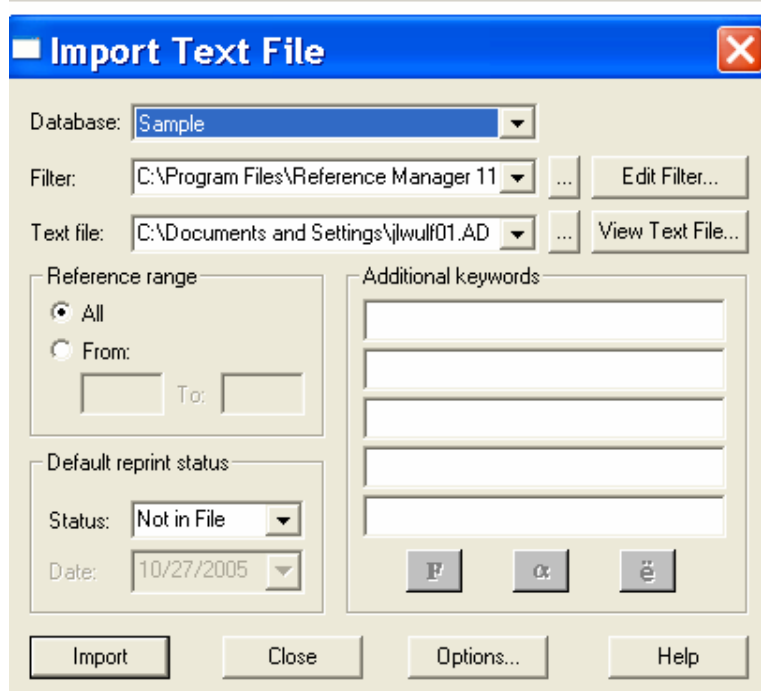


# Importing References From PubMed into Reference Manager v.11

1. Perform your search in PubMed ([www.pubmed.gov](http://www.pubmed.gov)) and view and select the records you want to bring into your citation management software.
2. After selecting your records, from the pull down menu beside **Display**, select **MEDLINE**.
3. From the pull down menu beside **Send To:** select **File**.
4. A **File Download** dialog box will appear. Choose **Save**. (If you don't see the dialog box, make sure your pop-up blocker is not turned on for this site.)
5. A **Save As:** dialog box will appear. In the **Save in:** box choose where you wish to save the file. Change the **File** name to something you will recognize. The file name should end with **.txt** (Type=text Document). Click on **Save**.
6. In Reference Manager, locate the Reference Manager database you wish to transfer your records to and open it.
7. In Reference Manager, select **File**, then **Import text file...** An Import Text File dialog box will appear.



In **Database:** Select the Database into which you want to send the citations.

In **Filter:** Click on the box with the 3 dots and choose PubMed.

In **Text file:** Click on the box with the 3 dots and browse for the file you just saved from PubMed.

8. Click on the **Import** button. Your references will now be transferred into your Reference Manager database.
9. The imported references can be seen under the Imported tab in Reference Manager, but they are also present in the database you chose. "Imported" is a temporary database that will go away when you close Reference Manager. Take a look at the imported citations to make sure that they imported correctly.