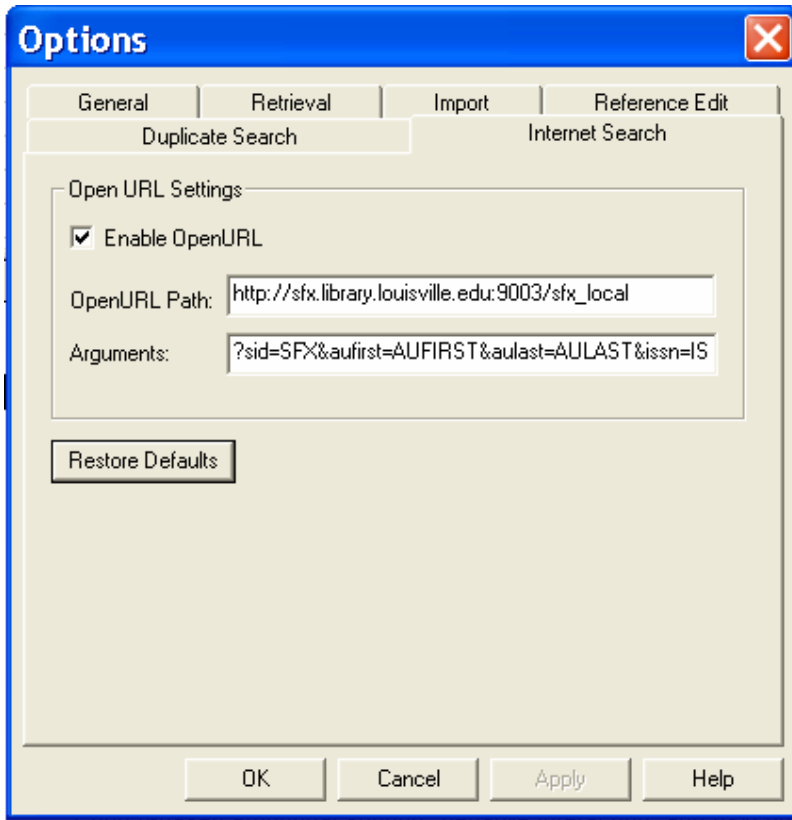


## Using OpenURL in Reference Manager (version 11)

1. Go to **Tools** → **Options** → **Internet Search**
2. Click the “Enable OpenURL” checkbox
3. Enter the address of the UofL Libraries open URL resolver:  
**http://sfx.library.louisville.edu:9003/sfx\_local**
4. Click the Apply button, then click the OK button.



5. Highlight a single citation and go to **References** → **OpenURL Record Link**
6. The information from your citation should populate the fields of the FindIt@UofL Services Menu. If your data are not in the correct field in Reference Manager (for example the ISSN is in the Notes field rather than the ISSN field), FindIt@UofL may not be able to find your article. See help on Import File Editor in order to fix this problem.
7. If you experience problems, contact Anna Marie Johnson x1491 or [annamarie@louisville.edu](mailto:annamarie@louisville.edu)