



Don't Forget, Dean's Holiday Breakfast for Staff at Lynn's Paradise Café tomorrow, December 14, 8:30 AM.

Inside This Issue:

- Many Congrats [2 & 3](#)
- BSW Site Accreditation [4](#)
- Meet Kim Rodgers [5](#)
- BSW Sun Grant [5](#)
- Doc Program [6](#)
- Noell Hartford Faculty Scholar [7](#)
- KIPDA Contract [7](#)
- Barbee & Co Contract [7](#)

From the Dean's Desk

Miracles

Certitude or absolute certainty is something I know so little about anymore. Yet I am amazed as I grow older and less certain, I seem to be living in a time when others seem so certain of everything. It is reflected in our religious and political discourse, the comments of our students, and even in our interpersonal conversations with each other. Some might say if I were more religious, it would not be a problem, because I would have faith, much stronger than knowledge. Others say if I put my confidence in science, I would have greater certainty, or to hedge it a bit, more likelihood – at least a 95% chance if I followed the evidence. Well, maybe both are right. I do have my own peculiar system of beliefs that incorporates what I developed over a lifetime. And while I am not stupid in overlooking what good evidence provides in a way of thinking about the world, a part of me lives in a realm of possibility.

As I write this, we are in the midst of holidays of the two religions about which I am most familiar. In the one, Hanukkah, we are confronted by

two stories of miracles, the amazing defeat of the Greek-Syrian army by a small band of trapped Maccabean soldiers and the other having to do with oil enough for only one day of candle lighting that kept the candle going for eight days – thus, the Festival of Lights. The second faith tradition, Christianity, talks about the miracle of the birth of a little baby who would become a pathway for redemption of humankind.

What does any of this have to do with social work, the Kent School, or anything remotely connected to who we are and what we do? It suggests for me that it is important to be rigorous, diligent, to pay attention to all the details of our lives and the knowledge accumulated; yet, know that we can achieve better, be better and live in hope for a world that must do better – a world that can certainly use a few miracles.

The Sculpture Out Back

There have been a number of questions about the new construction at Oppenheimer Hall. Noted local sculptor, Dave Caudill donated a sculpture in honor of his wife, Joann Harrison, a graduate of the Kent School and long time child welfare social worker. The 12-foot-tall work, "The Balance of Dreams and Plans," was dedicated May 20 in a ceremony outside Oppenheimer Hall. The small plaza contains Dave's sculpture, a brick pavement with several benches to sit and reflect. The plaza area is bordered on several sides with roses. It is a nice tribute to Joann's successful career as well as an enhancement to Oppenheimer and the Century Walkway which traffics students through the campus. See the [full story](#).

Welcome to Kent! Recent Employees

Adrian Archuleta (Assistant Professor—MSSW), Joe D'Ambrosio (Program Manager—New KIPDA contract), Sue Francik (Program Assistant Sr.—Adoption/CFL projects), Dori Goya (Program Manager—TANF project), Erin Ness (Program Coord.—Neighborhood Place), Kim Rogers (Administrative Assistant—BSW program), and Ally Rutledge (Research Analyst—First Step project)

Newest Faculty Appointment—Martin Hall

Welcome to our newest Kent School faculty member, Dr. [Martin Hall](#). Martin is a graduate of the Kent School and later received his doctorate from UNC, Chapel Hill. For the past two years, he has been a post-doctoral fellow at the University of Kentucky working with Dr. Carl Leukefeld. Martin started off as a teacher and later moved to child welfare. His main thread of research has been with prescription drug abuse. He has been honored for his teaching and is a very serious scholar.



E-News Board

- Joyce Borders
- Nancy Bruner
- Debra Evans
- Annatie Faul
- April Hebner
- Ramie Martin
- Noell Rowan
- Tammy Waggoner

Congratulations –Spring, Summer, Fall 2010

Tara Schapmire & Annatjie Faul - received a second American Cancer Society Oncology Social Work Doctoral Grant for her dissertation proposal: *Psychosocial Adjustment in Older Adults with Cancer: A Longitudinal Multilevel Analysis*.

Bertha Muchera - brilliantly defended her dissertation on preventing child neglect under the direction of her chair Bibhuti Sar

Emma Sterrett (our newest MFT faculty) - received the Wallach award from the University of North Carolina, for "graduate student excellence & superior accomplishment."

Stacy Deck - successfully defended her dissertation under the direction of her Chair, Annatjie Faul. Stacy also won the award for the best PhD student at UofL (Guy Stevenson Award) in May Commencement ceremony.

Rus Funk - honored as a part of the Global Advisory Council of the newly launched Mobilizing Men for Violence Prevention (MMVP)

Fran Ellers - won the award for the best Master Degree student at UofL (Alice Eaves Barnes Award) & will be honored at the UofL May Graduation

Eli Karam - elected as the President-elect for the Kentucky Association for Marital & Family Therapy (KAMFT).

Noell Rowan - selected Hartford Faculty Scholar, one of only six nationally in a very competitive process. She joins Annatjie Faul, who has just completed two years as a Hartford Faculty Scholar.

Andy Frey - awarded the Gary Lee Shaffer Award for Academic Contributions to the Field of School Social Work at the School Social Work Association of America's (SSWAA) annual conference in St. Louis, Missouri.

Kent graduate students - Received 11 Graduate Dean's Citations at the May 2010 Commencement, more than any other academic unit on campus.

Rob Barney - successfully defended his dissertation under the direction of Ri-aan van Zyl.

Victoria Gottfried - successfully defended her dissertation under the direction of Seana Golder

Anita Barbee - honored with the 2010



Crystal Collins-Camargo

Unanimously voted by her colleagues to be the next leader of the child welfare group of CSWE. She will co-lead for the next 3 years & then serve a 3 year term as leader. Her role includes organizing the day long child welfare meeting which occurs on the first day of the CSWE conference before the beginning plenary session, chairing the child welfare track at the conference by generating a list of reviewers of child welfare submissions, determining which papers are accepted & grouping papers for paper sessions, symposia & break out sessions. This is a very important role among child welfare educators, evaluators & researchers.

Founders Award for the Junior League of Louisville

Theresa Hayden - successfully defended her dissertation

Annatjie Faul, Tara Schapmire, & Barbara Head - paper Just Give Me Hope: Lived Experiences of Medicaid Patients with Advanced Cancer has been accepted for the 2010 Annual Program Meeting (APM) in Oct.

Sheila Martin (student) - selected to receive the **Support Broker of the Year Award** from the Department of Aging & Independent Living (DAIL).

Nikki Henderson (alum) - currently an investigator with the Medicaid Fraud & Abuse Unit of the Kentucky Office of the Attorney General honored by ElderServe with its Champion for the Aging in 2010 Award

Justin Miller (doc student) - paper *What Would the Wombat Do: Sustainability through "Meta" Practice* presented at 2010 Annual Program Meeting of CSWE

Laneshia McCord (doc student) - first UofL student to receive a pre-dissertation award from the John A. Hartford Foundation

Melody Hyppolite - successfully defended her dissertation *The Impact of Parental Risk Factors on Child Outcomes: Examining Parental Incarceration within a Multiple-Risk Model* Under the tutelage of Dr. Seana Golder

Sharon Bowland - article *Evaluation of a Spiritually-Focused Intervention with Older Trauma Survivors* accepted for publication in the Journal Social Work.

Noell Rowan & colleagues from St. Louis & UCLA - paper, *Aging Savvy Social Workers in the Community: Impact of a National Educational Model* presented at the GSA 63rd annual conference

Toni Miles - paper *Health Inequalities: Politics & Policy in the Legislative Process* presented at the GSA 63rd annual conference

Cheri Langley - successfully defended her doctoral dissertation at University of Alabama Birmingham (UAB), School of Public Health on mediators of father absence on teen sexual behavior.

Deborah Rattle - honored as the Social Worker of the Year by the National Association of Social Workers- Kentucky Chapter

Hermeet Kohli (doc student & now on faculty at the School of Social Work at the University of Southern Maine), **Ruth Huber & Annatjie Faul** - article *Historical & Theoretical Development of Culturally Competent Social Work Practice* published in the Journal of Teaching in Social Work

Deborah Rattle - honored as the Social Worker of the Year by the National Association of Social Workers- Kentucky Chapter

Ruth Huber - honored by the Council on Social Work Education for her mentor role with doctoral graduate Peggy McGuire.



Congratulations — Cont.

Annatjie Faul & Joe D'Ambrosio – paper *Caring for mid-to-late stage dementia patients: A love intervention for caregivers* at GSA's 63rd Annual Scientific Meeting

Annatjie Faul, Pam Yankeelov, Wanda Collins, & Joe D'Ambrosio - a CDC 5-year, \$2.5 million grant award developed with KIPDA Area Agency on Aging to reduce the diabetes -related inequalities in vulnerable populations, specifically older adults & persons of lower socio-economic status, in the rural counties of Bullitt, Henry & Shelby.

Noell Rowan, Lynetta Mathis & Chelsea Jones – paper *Critical thinking engagement: Experiential learning with authentic social work practice* at the annual meeting of the Baccalaureate Program Director's Meeting in Cincinnati in February.

Annatjie Faul & Barbara Head - instrumental in the University's receiving a \$1.5 million grant to develop an interdisciplinary palliative care program. It was a coup as the University got this NIH grant on an unheard of first time submission. See [press conference](#)

Hermeet Kohli (doc student & now on faculty at the School of Social Work at the University of Southern Maine), **Ruth Huber & Annatjie Faul** – article *Historical & Theoretical Development of Culturally Competent Social Work Practice* published in the Journal of Teaching in Social Work

Tara Schapmire (doc student) - elected to the national board of directors of the Association of On-

cology Social Work

Sharon Bowland – article *Evaluation of a Spiritually-Focused Intervention with Older Trauma Survivors* was accepted for publication in Social Work

Noell Rowan, the BSW faculty, staff & students, & all others who contributed to such a positive exit report for our initial BSW accreditation. The Commission on Accreditation will review the program at its February meeting

to culturally diverse & underserved youth

Anita Barbee (PI) & Becky Antle, Dana Christensen, Eli Karam, & Bibhuti Sar (Co-PIs) & research team – contract award from DHHS, Office of Adolescent Health on Teen Pregnancy Prevention (Tier II). A 5 year, \$4.8M project, and the largest grant received by the Kent School. See article this issue

Louisville's Neighborhood Place - among 173 government programs nationwide to be recognized as a Bright Idea by the Ash Center for Democratic Governance & Innovation at the John F. Kennedy School of Government at Harvard University.

Betty Shiels & Rod Barber – selected Best Practice for Hospital Preparedness Program for the *KY All Hazards Long Term Care Planning & Resource Manual*, developed with UK, on the KDPH Emergency Preparedness for Aging contract by the Office of the Assistant Secretary for Preparedness & Response DHHS.

Ruth Huber - named Community Leader of the Year by The CARITAS Foundation, the philanthropic arm of CARITAS Health Services. Huber received the honor in part for her contributions to Hospice of Louisville (HL) & national hospice initiatives.

Sharon Moore & colleagues Linda Bledsoe, Michael Robinson, & Armon Perry – paper *Social Work Students & Self-Care: A Model Assignment for Teaching* accepted for publication by the Journal of Social Work Education.

Barbara Head (MSSW & PhD alum & adjunct faculty) - appointed to the Board of Trustees of Union College.

Chris Hall (Kent alum) - promotion & tenure at UNC Wilmington

Sally Atcheson

Outstanding Staff Performance Award 2010

Sally is responsible for providing oversight to numerous project staff to reconcile accounts and budgets of a research portfolio of \$10 million to \$12 million. She oversees all financial operations related to research funding, ensures compliance and accurate financial accountability and serves as the liaison between the Kent School and the Office of Grants Management.



"Sally Atcheson's philosophy is to serve others," her nomination said, noting that in the three years she has been at UofL, hardly a week has gone by that her supervisor doesn't get a compliment from faculty or staff at Kent School or elsewhere at UofL about Sally's helpfulness and efficiency.

Sally's nomination included several examples of her willingness to go above and beyond her basic job requirements. For instance, during the 2009 ice storm, she drove to campus to pick up two grant applications, prepare them and deliver them to the post office to ensure they were delivered before the deadline.

The letter also commended her for improving the unit's fiscal policies and procedures and for creating and executing new strategies to improve accountability.

"Her excellence helps us all," her nominator said.

Elizabeth Cooper (MSSW) & Stan Frager (professor emeritus) - two of four recipients of a nationally recognized award of the Boy Scouts of America honored for their service in bringing Scouting



Kent BSW - Initial Site Accreditation Visit a Success!

During the month of September, 2010, the BSW Program hosted Dr. Peter Vaughan, Dean of Graduate School of Social Service, Fordham University as the appointed site visitor from Office of Social Work Accreditation and Educational Excellence, Council on Social Work Education. It was a long awaited day for the BSW Program faculty, staff and students with three prior annual site visits during the development of our undergraduate program at Kent School of Social Work. Dr. Vaughan documented many positive comments about the BSW Program and highlighted a myriad of strengths. He applauded the extensive work of Kent School to bring the undergraduate program to fruition and then departed without any concerns or need for clarification.

A summary of the site visit main points includes:

- The program holds much strength and richness with a clearly articulated vision related to the eight Accreditation Standards.
- Alumni have commented on the strong academic and community leadership of the Dean of the School, the creativity and responsive leadership of the BSW Program Administration and faculty.
- The Community Advisory Group spoke of the organic relationship that faculty have with the practice community that distinguishes it from other schools of social work in the area.
- There is a great need for program expansion to meet the demand for BSW social workers in the State of Kentucky.
- The Provost expressed how the School is an institutional leader in curriculum development, advocacy and community engagement exclusive of students' field work.
- The course syllabi reflect a well conceived and executed BSW program.
- The program is built on integrated cross sequence students assignments, group projects that draw from all areas of the curriculum and faculty speak in one voice when articulating the mission and vision of the BSW Program.

In speaking about the faculty and their learning experiences in the Program students made the following points:

- Faculty members respect the students and their opinions even when they differ from the faculty. Faculty members know and respect each other. They model for the students how to differ respectfully.

- Students see critical thinking as an empowering concept that helps them to appreciate what it means to be a professional and thinker.
- Diversity is a program focus and the value of diversity is integrated throughout the curriculum (class and field) with an emphasis on respect for others and critical thinking and decision making based upon how others act rather than what one believes they think.
- Faculty members personalize students' learning experiences through out of class contacts. Advisors encourage openness through their active listening and sincere interest in students as learners and professionals. They help to identify options and help students choose the best option for them.

The next steps toward initial accreditation include an official meeting of the CSWE Office of Accreditation in February, 2011 wherein our program materials will be reviewed based on Dr. Vaughan's site visit report and voted on for initial accreditation. We appreciate the conclusions of Dr. Vaughan from his visit and thorough review of our program materials. We look forward to hearing more good news in February, 2011.

N. Rowan



BSW - Ideas to Action — SUN Grant

In an effort to enhance BSW Curriculum, a SUN grant has been awarded for the 2010-2011 year. This initiative seeks to increase the rigor in our newly developed Capstone Project and create a "Writing for Social Workers" Course to promote BSW student ability to write for professional social work. In the development of our BSW curriculum, we used critical thinking and evidence-based constructs to provide an infrastructure around which to build the curriculum. In developing its program objectives, Kent School of Social Work was careful to delineate the concept of critical thinking into subcomponents which formed the measureable outcomes related to student learning. After all, it was in these very specific knowledge areas and skills that the social worker would be able to perform the tasks of practice that we defined as central to good social work practice. In keeping with this commitment to excellence and the underlying focus of our curriculum on critical thinking, we plan to utilize this SUN project to further enhance our BSW curriculum. *The overarching purpose of this project is to implement the i2a goal of demonstrating well-cultivated critical thinking skills when engaging in authentic social work practice experiences.*

Summary of Goals

- To create a writing course to enrich the BSW program curriculum for junior level students who are

undergraduate social work majors. Social work students need to demonstrate the ability to write succinctly using critical thinking skills and reflection. This course will be designed to instruct students about the application of critical thinking skills to writing as it specifically relates to complex social situations necessary for the social work profession.

- Building on skills learned in the writing course, the senior year Practicum Seminar Courses (SW 472 and SW 473) will pilot test an increase in the rigor of the BSW Capstone Project. Lynetta Mathis is spearheading this capstone project and is enthusiastic about the SUN grant initiative. The rigor of the capstone project will be increased by expanding the project to last the entire senior academic year and include an evidence-based literature review related to their project areas with at least 8 scholarly sources of peer reviewed literature to be incorporated in a poster presentation. Students in their senior year will have the opportunity to work within a social work agency under direct supervision of a professional social worker in the community while collaborating on a specific project to contribute to the needs of clients in the community.

N. Rowan

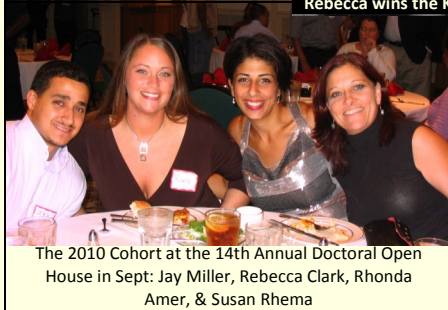
Meet Kim Rogers



Kim was hired as an Administrative Assistant for the BSW Program. A native Louisvillian, she currently lives in St. Matthews with her husband, Troy, and son, Coleman. Kim comes to us from the corporate world where she was employed with AEGON, USA for 26 years. Her accomplishments with AEGON range from processing, customer service, managing both the processing and customer service teams and most recently managing the quality assurance, testing and project management teams. She was responsible for system upgrades, documents, procedures, led a high volume call center and attending to many tasks simultaneously in administrative duties and management. The Louisville division Kim worked with was recently transitioned to Cedar Rapids, IA (brrrrrr) and Kim decided that a career change may be just the ticket! The professional and organizational skills Kim obtained with AEGON have made the transition to the University of Louisville a seamless one for her. When Kim was asked why she chose such a drastic change in her career, the response was, "if I really got to choose what I wanted to do, what would that be?" Kim decided that since she is an avid University of Louisville fan she might enjoy working with students in an educational environment. She began a search of jobs available at the University of Louisville and was given the opportunity to work with the BSW Program at Kent School. Kim enjoys spending time with her family, all in Louisville, with the newest addition her 2 year old grandson Eli. Kim is a uniquely gifted artist and loves to share art and crafts with friends and family.

Doctoral Program News

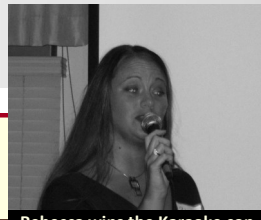
The transition year for the director of the Ph.D. program is well under way, from Dr. Ruth Huber to Dr. Bibhuti Sar, who is proving to be up for the challenge. There is barely a heartbeat between launching one cohort and interviewing potential students for the next. Meanwhile, policies are being reviewed and discussions are underway about ways to strengthen the program. There are also two changes in doctoral faculty. Dr. Wanda Lott Collins will teach the *Teaching in Social Work* course, and Dr. Sharon Bowland will teach the *Advanced*



The 2010 Cohort at the 14th Annual Doctoral Open House in Sept: Jay Miller, Rebecca Clark, Rhonda Amer, & Susan Rhema

Qualitative Research course, and Norma Kyriss and Debra Evans continue to be mainstays of the doctoral program

R. Huber



Rebecca wins the Karaoke con-



Ruth Huber (pictured w/ husband Don) was honored at the Candle Glow Gala benefit on Dec. 4 with the Sherrill Thirlwell Award of Individual Excellence, one of the top awards to honor individuals for their work with Hospiraus.

Noell Rowan Hartford Faculty Scholar

Noell Rowan was recently selected as a 2010-2012 Hartford Faculty Scholar in Geriatric Social Work. Out of a large, nationwide pool of qualified candidates, Dr. Rowan is one of 6 scholars selected to receive \$100,000 over the next two years to enhance research, teaching, and leadership skills. During the next two years, she will conduct a research project focused on evaluating and improving the field of geriatric social work. Dr. Rowan's research topic will explore resiliency and quality of life in older lesbian adults with alcoholism.

The Gerontological Society of America administers the Hartford Faculty Scholars Program. The Society is a national organization of professionals in the field of aging and is dedicated to the promotion of scientific study. It is designed to encourage exchanges among researchers and practitioners and to foster the use of gerontological research in forming public policy.

Research Study:

Resiliency and Quality of Life of Older Lesbian Adults with Alcoholism

Older adults with alcohol or other drug addiction are expected to create tremendous demands on the American health service delivery system by the year 2020 (Gfroerer, Han, Collier, & Pen, 2008; Gfroerer, Penne, Pemberton, & Folsom, 2002; Korper & Rasken, 2003; Trunzo & Henderson, 2008). Moreover, alcohol addicted older adults who are lesbian are estimated to be at an even greater risk and vulnerability due to the increased needs for physical and mental health services in this special population (CSAT, 2001; Jones, 2001; Satre, 2006; Wilsnack, et al., 2008). There is a huge gap in the literature regarding older chemically dependent lesbians and their health and mental health needs (Satre, 2006; Shankle, Maxwell, Katzman, & Landers, 2003). The purpose of this study is to obtain pilot data necessary for the development of social work interventions for older adults with alcoholism who are lesbian. Drawing on resiliency theory and the narrative gerontology perspective, the proposed study is designed to obtain in-depth information using retrospective life history accounts about how older lesbian women with alcohol addiction experience their illness, their perceptions and use of formal and informal services, their quality of life, and how they attained and sustain sobriety. A qualitative, phenomenological approach will be utilized involving a series of individual interviews and a brief quality of life measurement to inquire about the multiple roles of dealing with being older, lesbian, and having alcohol addiction. Data analyses will involve identification of themes from the interviews in order to highlight the depth and rich life experiences which relate pertinent issues that will need to be addressed when developing future interventions and further research. Results will be disseminated with local and national social work, gerontology, and substance abuse treatment conference and journal outlets. Findings will be articulated as they relate to enhancing social work education, practice, and advocacy, and as they specifically address ways in which the health and well-being of older persons and their loved ones can be improved.

KIPDA & Kent Partner

The Kentuckiana Regional Planning and Development Agency (KIPDA) was notified by the Centers for Disease and Control and Prevention that they were awarded a 5 year, 2.5 million dollar grant under the National Program to Eliminate Diabetes-Related Disparities in Vulnerable Populations Project. This grant will focus on reducing diabetes related disparities in older adults and persons of low socio-economic status in the rural counties of Bullitt, Henry and Shelby, selected for their high percentage of diabetes-related health disparities, and include a high percentage of older adult residents, and residents with low socio-economic status. KIPDA is excited to expand its partnership with the Kent School of Social work who will facilitate coalition develop-

ment, needs assessment, identification of evidence based interventions and program evaluation.

Kent's effort will be led by Annatjie Faul, Pam Yankeelov (PIs) Wanda Collins, Faculty member and Joseph D'Ambrosio, Program Manager. Faul and Yankeelov are experienced researchers in the field of chronic disease management and health disparities. Collins, who will work on the academic team, is the ordained Associate Minister and resident social worker of Clay Street Baptist Church in Shelby Co. and is actively involved in the Kentucky African Americans against Diabetes Church Initiative and serves on the board of

this initiative. D'Ambrosio has practiced law for over 30 years, obtained a MSSW degree in 2000 and is currently ABD in the Kent School PhD program. He will use his conflict resolution and group facilitation skills to foster coalition building and will serve as the full-time evaluation manager of the project.

[Read More \(link to KIPDA document\)](#)



Barbee & Team Awarded 5-Year Contract

Anita Barbee and colleagues were notified in September of a contract award from the US HHS Office of Adolescent Health. The five-year, \$4.8 million contract will provide physical & emotional health and teen pregnancy prevention programs to youth in the Louisville area.

The project calls for contributions from many individuals both within the Kent school and beyond. Anita is the PI, with co-PIs including Becky Antle, Dana Christensen, Eli Karam, Bibhuti Sar. Other university notables include Riaan van Zyl, Adrian Archuleta, Michael Cunningham (Communication) and Brandee Wimberly (Medicine). Lucky for us, the contract award has allowed Research manager Cheri Langley to continue here at Kent, tying in nicely with her work with youth through the Yes You Can contract which ended recently. Althea Dryden, Sally Atcheson, Edie Wooton and Joyce Borders will also work on the project, so too will our old friends Kevin Borders, Dana Sullivan and Larry Michalczyk.

[Project Details](#)

- The youth to be served include urban, refugee/immigrant, independent living and other adolescents ages 14 to 19.
- Pregnancy prevention programs will be provided through partnerships with youth-serving organizations in the Louisville area.
- Qualified professionals from the community, including staff from the partner youth-serving organizations, will be provided with training in one of two evidence-supported teen pregnancy prevention programs: **Reducing the Risk** or **Love Notes**.
- The contract will provide approximately 30 trainings per year (12-15 *Reducing the Risk* and 12-15 *Love Notes*) classes with a target of 15 youth in each class, for a total of 1260 youth over five years!
- Partner organizations will be asked to recruit 30 youth a year for a designated month of training, with additional youth being sent to overflow trainings throughout the year
- *Reducing the Risk* and *Love Notes*

workshops, about 16 hours each, can be tailored to meet the needs of youth at each site. Youth will be provided with a financial incentive for participation, as well as transportation vouchers and food. Parents will attend an orientation meeting and will be provided with an incentive.

- Extensive evaluation research will be conducted on the effectiveness of each program for preventing teen pregnancy and promoting positive youth relationship outcomes.

What is the name of the project? Resident wordsmith Althea once again created a fitting project moniker, official just this week --

CHAMPS -- Creating Healthy Adolescents through Meaningful Prevention Services.

If anyone has questions about the CHAMPS Project please contact either Anita at 852-0416 or Cheri at 852-8697.

J. Borders