

the *Kent* RECORD

An illustration in a painterly style showing two figures. On the left, a person with dark hair and a purple jacket is shown in profile, looking towards the right. On the right, a person with reddish-brown hair and a light blue shirt is shown in profile, looking towards the left. The background consists of vertical and horizontal bands of various colors including purple, pink, red, and yellow. The overall style is soft and textured, reminiscent of pastel or oil painting.

SOCIAL WORK
& CANCER

www.louisville.edu/kent

Terry L. Singer
Dean, The Kent School of Social Work

Hyemi Sevening
Development Officer
Project Liaison

Kevin Hyde
Editor
kevin.hyde@louisville.edu

Amy Abrams '97A
Art Director

Tom Fougerousse
Photographer

The Kent Record is published with assistance from the Office of Communications and Marketing. Send correspondence to The Kent Record, The Kent School of Social Work, University of Louisville, Louisville, KY 40292. This publication was prepared by the University of Louisville and printed with state funds KRS 57.375.

Printed on recycled paper
Copyright ©2005 University of Louisville
The University of Louisville is an equal opportunity institution.

ON THE COVER

The illustration represents the oncology social worker. Mobilizing resources to provide social and emotional support, an oncology social worker advocates on behalf of cancer patients, cancer survivors, families and caregivers to address their needs.



Dean's Forum

"Dreaming"

Several years ago I wrote in this Dean's Forum about the dreaming we were doing at the Kent School. It is amazing to look back at the hard work of faculty, staff, excellent students and dedicated alumni to see where we landed and where we are headed.

Students in both the master's and doctoral programs are being honored with the top graduate awards at commencement; faculty are receiving the highest honors bestowed on faculty at the university; a staff member was honored for her outstanding service to the community; extramural funding for the school has surpassed the \$3 million mark and continues to climb; a recent leadership award by the New York Academy of Medicine and the John A. Hartford Foundation highlighted our growing national recognition for our work in gerontology; alumni and friends continue to help us build scholarship endowments for students; among many other distinctions realized by the school.

Dreams do come true.

And we now break ground for our newest dream—the first endowed chair in the Kent School supported in part by the "Bucks for Brains" program of the state. The university is in the midst of building the only Comprehensive Cancer Care Center in Kentucky, and has designated the Kent School as a recipient of an endowed chair with a major role to play in this development. The chair has been targeted for Oncology Social Work, the first and only one in the country. Who among us has not been touched by cancer, whether to our own person, family or circle of friends? This endowed chair will help to develop a knowledge base to establish best practices with cancer victims and their families, building on the strength of our understanding of social and community support networks.

This is a very exciting moment for the school. With this planning is the potential to build an educational specialty that could prepare social workers to practice in the field of oncology throughout the country, giving leadership to the establishment of truly comprehensive care.

In the movie *Field of Dreams*, we were promised, "If you build it, they will come." That was true in the movie, and it is true for us. I hope you will share in the dreams with us as we continue to build this school of proud tradition, one which produces excellence, and for which you can be proud. And with your help, we'll just go right on dreaming.

Terry L. Singer
Dean of Kent School



Social Work/Law

DUAL DEGREE A GOOD FIT FOR KENT STUDENTS

Untapped interdisciplinary possibilities exist in bringing together social workers and lawyers.

The two professions have much in common. Both often work in courtrooms and advocate for the oppressed. Their work places them in the middle of family conflict, and their skills are needed to solve society's problems.

Fields including poverty law and family law attract people with degrees in both areas, plus many social workers have jobs in legal settings or related programs.

For students interested in combining social work and law, there's a new dual degree program being offered by the University of Louisville's Kent School of Social Work and Brandeis School of Law.

"It's a good thing because, of course, much of social work is informed by law and, conversely, much law is influenced by dealing with people," says Carol Tully, a Kent School professor.

The idea of combining the two fields is not new or unique to U of L.

"It's something that has a long history of working—and working well," Tully says.

By seeking both degrees in the collaborative program at U of L, students can graduate in about four calendar years (often including summer coursework), reduce the credit hours by 21 and emerge with both juris doctorate and master of science in social work degrees.

"This is a way to not only streamline the program but also to reinforce the connections between the disciplines," says Cedric Powell, the law school's associate dean for academic affairs. "We think it's a good complement."

So too does Maria Ramirez (above) of Louisville, who became the dual degree program's first graduate this past May. After doing her undergraduate work in international affairs at George Washington University in Washington, D.C., Ramirez decided to switch career plans. She wanted a career working for humanitarian or civil rights causes.

"I chose social work, but I also was interested in law," she says.

"Social workers tend to be reactive but need to be more proactive, advocating on their clients' behalf. But if you don't know the legal system you can't advocate or make changes for social justice."

Ramirez started her dual degree program at Kent and finished up at Brandeis. Students can start at either school. If a student first enrolls at Kent School, the first year of study is like that of any other first-year social work student, with the second year following the curriculum of a first-year law student. If a student first enrolls at Brandeis, the routine is reversed. The third and fourth years of the dual degree program involve a combination of law and social work courses.

—By Kevin Rayburn

Attorney Receives GRADUATE STUDENT AWARD

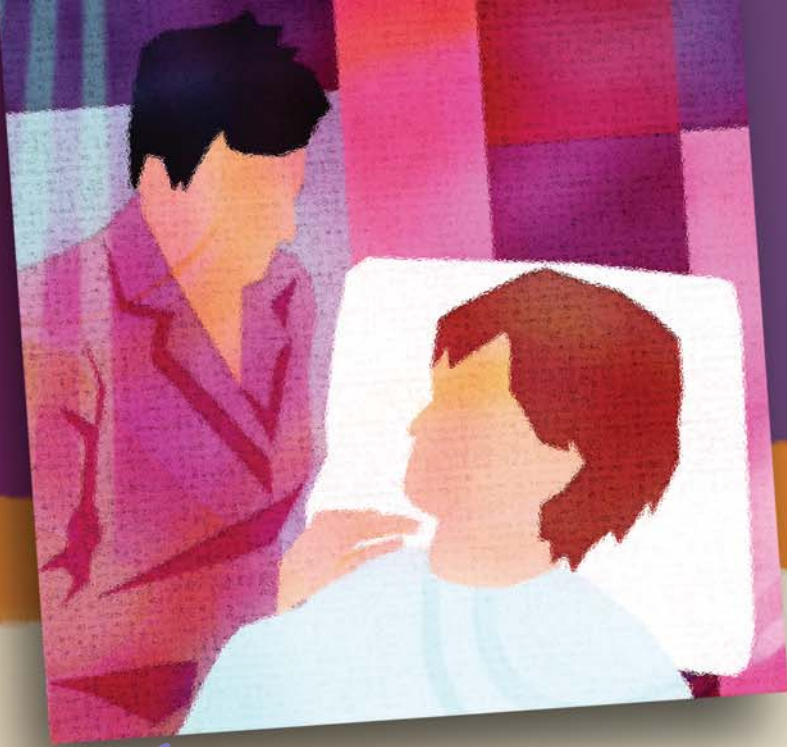
Joseph G. D'Ambrosio, who earned his master's degree in social work with a specialization in marriage and family therapy, received several awards and honors including the University of Louisville's outstanding graduate student award during commencement ceremonies this past spring.

An attorney who went back to school for his social work degree, D'Ambrosio received the Alice Eaves Barns Award for Outstanding Achievement in a Master's Program. He also received a Dean's Citation and was named Outstanding Student and Nominee for Student Speaker at the 2005 graduation ceremonies.

D'Ambrosio graduated from U of L's Brandeis School of Law in the 1980s and became the founding partner of the successful Louisville law firm D'Ambrosio & Associates. When he decided to focus his law career more on family and socio-economic issues, he enrolled in the social work program.

D'Ambrosio also is credited with reviving the Kent School Student Association as its president. He organized some special activities such as trips to Appalachia and Chicago to expose social work students to other types of delivery sites.





“I had to face my own mortality, learn to deal with end of life issues comfortably and help patients deal with the biggest loss they will ever face: death.”

—Tara Schapmire



Social Work @ Cancer

KENT SCHOOL DEVELOPS ENDOWED CHAIR IN ONCOLOGY SOCIAL WORK

For a person diagnosed with cancer, the right social worker can mean the difference between maintaining quality of life and slipping into the darkness of despair, pain and hopelessness. For a person diagnosed with cancer, the right social worker can mean the difference between navigating effectively through health care systems and getting lost in a bureaucratic quagmire.

For so many suffering from cancer, the right social worker is essential.

Mobilizing resources to provide social and emotional support, an oncology social worker advocates on behalf of cancer patients, cancer survivors, families and caregivers to address their needs.

The Raymond A. Kent School of Social Work wants to produce the right social workers for cancer patients by establishing the only Endowed Chair in Oncology Social Work in the nation.

“The position will be created to develop a state-of-the-art training and research program specifically targeted for cancer,” says Terry Singer, dean of the Kent School. “We will assist the James

Graham Brown Cancer Center and the Louisville medical community in providing psychological care to cancer patients, their families and caretakers.”

The U of L Research Office has earmarked \$1 million through Kentucky’s “Bucks for Brains” program for the oncology chair. Through the program, Kent must match that sum, and the school would like to accomplish that by September of next year.

“There are oncology social workers, but there’s really no formal training program at an accredited school,” says Hyemi Sevening, development officer for Kent School. She is leading the effort to raise the \$1 million match. “We will be the first to not only have an endowed chair in oncology social work but also begin the planning of formalizing an actual program in the future.”

Kent hopes to receive support and backing from such powerhouses as the American Cancer Society, National Cancer Institute, National Association of Social Work, Association of Oncology Social Work and more. The school is currently searching for an organization or individual to come forward with a

lead gift, Sevening says.

“We’re looking at different strategies, but the most successful one will require a lead gift, which will help stimulate the marketing and exposure of what this chair could mean to Kent School and the university as a whole,” she says.

The Kent School has never had an endowed chair, Singer says.

“So this would mean a lot of ‘firsts,’ ” he says. “It will really lay the foundation for an oncology social work program to take off at the university.”

Tara Schapmire, a 1996 Kent School graduate, is an oncology social worker at Louisville’s Baptist Hospital East and a member of Kent’s volunteer group for the oncology social work chair. She never received formal oncology training at U of L but was able to gain certification through the Association of Oncology Social Workers.

“My interest in the medical field led me to choose hospital internships while at Kent,” Schapmire says. “After starting at Baptist East in 1996, the oncology unit social work position opened up and I

decided to take on the challenge.”

It was a scary proposition at first, Schapmire recalls.

“I had to face my own mortality, learn to deal with end of life issues comfortably and help patients deal with the biggest loss they will ever face: death.”

But Schapmire sensed oncology social work was an area which needed all the skills she had acquired at Kent while challenging her to learn new things and utilize new resources.

“I fell in love with oncology social work then and knew that I’d found the field in which I was meant to try to make a difference,” she says.

Like so many areas of social work, the oncology specialization within the larger medical social work field was realized when it became obvious how different the psychosocial needs were for cancer patients and their families, Schapmire says.

“When I work with Kent students, I explain how cancer is a ‘world-rocking’ event for people,” she explains. “Someone can be told they have heart disease, which may very well be terminal, but they will not hear it in the same way they do if they are told they have cancer.”

The word “cancer” jars them in a life altering way, she says.

“They are in crisis and it is our job to help them learn about something that has the equivalency of a foreign lan-

guage, and navigate through and cope with all the various stages of illness,” she says. “My most important daily function is helping patients and families begin to see hope in places they did not see before, to find their own inner strength to fight their cancer—mind, body and soul.”

Schapmire says the demand for oncology social workers is growing as research increases on how to help minimize hospitalizations, reduce lengths of stay in hospitals and “promote healing through measurements of distress, teaching coping skills and resource linkage. The psychosocial component of fighting cancer cannot be denied.

“Cancer survivors can choose to heal themselves emotionally and spiritually, even if they do not know if their bodies will heal. And oncology social workers are the best ones to help them.”

Schapmire says the potential for a Kent School Endowed Chair in Oncology Social Work is enormous.

“What a wonderful way for Kent School and U of L to stand out nationally and internationally,” she says. “It’s an exciting endeavor to be a part of.”

For information on how you can contribute to the Kent School Endowed Chair in Oncology Social Work, please contact Hyemi Sevening at 502-852-4919 or email hyemi.sevening@louisville.edu.

—By Kevin Hyde

Oncology Social Work and Louisville

What will an endowed chair in oncology social work do for the community?

- ☀ Bring cutting edge research and national funding streams to the university
- ☀ Garner national attention for Louisville as the leader in psychosocial research, training and care in cancer
- ☀ Recruit and develop top students throughout the nation for the field of oncology social work
- ☀ Contribute to the multidisciplinary effort to provide quality psychosocial care to oncology patients and survivors
- ☀ Establish care models and pathways which improve healthcare utilization
- ☀ Provide oncology social work expertise to communities as they work to assist cancer patients and survivors



The Age Wave

BUILDING A GERONTOLOGY FOCUS AT KENT SCHOOL

As the number of older adults in our society rapidly increases and is projected to grow in the coming decades, there is an urgent, nationwide demand for qualified, competent geriatric social work practitioners, according to Annatjie Faul, associate dean and professor at the Kent School of Social Work.

"Kent School has responded well to this new challenge in our profession," says Faul, who heads Kent's gerontology focus. "A few years ago, aging classes were under-enrolled at Kent School and only a handful of students did practicum placements in agencies dealing with our aging population. In the past two years, with a new focus being placed by the school on this important population, two major initiatives at the school resulted in federal and foundation funding to help shape the focus at Kent School."



GEMS

In 2004 Faul's team of researchers and students was awarded a three-

year, \$800,000 federal grant from

the Human Resources and Services Administration (HRSA) to develop interdisciplinary training in assessment and self-management services to the elderly population in medically underserved areas of Kentucky.

The Geriatric Evaluation and Self-Management Services (GEMS) project has as its main aim to develop and expand capacity and infrastructure to advance specialization in culturally competent best-practice geriatric assessment, case and self-management skills in medically underserved communities.

The project will assist older adults to be more self-sufficient in their own homes for a longer period of time.

"Working collaboratively with older adults and their caregivers, teams of physical therapy and social work students and professionals provide high quality geriatric assessments, develop or strengthen strategies for remaining at home, teach methods for managing one's own health care needs in order to prevent health problems and improve well-being and assist older persons to use in-home technology to manage their self-care plans."

In the first year of the project, 12 social work students, nine social work professionals, nine physical therapy students and seven physical therapy professionals were trained to provide services to 25 older adults in the medically underserved areas surrounding Louisville. Services will be extended during the second and third year of the project to ensure quality services to older adults.

PRACTICUM PARTNERSHIP

In 2005, based on the strengths of the GEMS project, Faul's team secured another grant from the Hartford Foundation for Kent School to become part of the Practicum Partnership Program (PPP). This is the only program funded by Hartford Foundation that focuses on field education and aging at the graduate level.

The goal of this program is to increase the number of students who specialize in working with older adults by developing aging-rich field internships in graduate social work education programs.

"Ultimately, the goal is to increase the number of social workers to be leaders in the field of aging," Faul says.

Through this program, full scholarships are given to students to do a specialized rotation practicum in the field of aging. With funding from the Hartford Foundation, six students received full scholarships in 2005, in 2006 10 students will receive full scholarships and 14 students will receive full scholarships in 2007.

Faul wants the project to lead to a Center for Geriatric Excellence at the University of Louisville that will provide specialized training to students in the field of aging. The core of this project is community collaboration.

"The PPP program at Kent School secured the participation of 40 agencies in an aging consortium that meet three times a year to develop strategies to build expertise in the field of aging," Faul says.

The consortium will also help in the development of monthly seminars where community experts will address important topics in the field of aging. A specialization in gerontology will be established this year as part of the PPP program.

The Kent School intends to be on the front edge of the Age Wave, Faul says.

"Developing expertise and creating a new enthusiasm for the field of aging is drawing attention from funders, attracting many more students, building new collaborative partnerships between faculty and community agencies and helping to establish an infrastructure that ensures that Louisville and Kentucky will be ready to serve the needs of the aging populations," she says. 🌟

Making a PACT

TO HELP CHILDREN OF DIVORCED PARENTS

Parents Achieving with Collaborative Teams (PACT), an innovative program at the Kent School of Social Work that tries to reduce conflict between divorced parents, recently received a \$500,000 federal grant.

Dr. Joe Brown and his co-investigators—Mary Lou Cambron of Jefferson County Family Court and Drs. Linda Bledsoe and Pamela Yankeelov of Kent School—were notified this past spring of the congressional earmark from the U.S. Department of Justice.

PACT works with divorced parents who are unable to agree on issues like child support, visitation issues, medical care or visitation plans for their children. The program also seeks to strengthen the parent-child bond in such difficult situations.

The program was developed in collaboration with the judges and staff support of Jefferson Circuit Court-Family Division, specifically Judge Patricia Walker-FitzGerald and Chief Judge Stephen George; Jim Birmingham, Family Court Administrator; and Barbara Hughes, Family Court Staff Attorney.

PACT is a six-session intervention program that is led by a parent facilitator, which combines conflict resolution and community support. During these sessions, parents develop a personal plan for managing their conflict and an overall parenting plan. Subsequently, each parent meets with their respective support team, which is comprised of friends and family who aid each parent in the plan.

THE SPECIFIC GOALS OF PACT ARE TO:

- 1) Assist parents in reducing the level of inter-parental conflict, child exposure to such conflict, and reduce the re-litigation over parenting plans, residential arrangements, and parenting time;
- 2) Increase effective parenting skills and conflict management skills related to ongoing conflicts;
- 3) Assist at-risk parents to strengthen the relationship with their children by using community resources;
- 4) And improve child well being as a result of reduced conflict levels in family, improved management of conflicts, strengthened parent-child relationship due to enhanced parenting skills and greater involvement with



Excellence

KENT SCHOOL FACULTY AND STAFF HONORED

This past spring the University of Louisville honored faculty and staff at the Kent School of Social Work for excellence in teaching, research and community service.

ANITA BARBEE UNIVERSITY SCHOLAR

Anita Barbee, a Kent School research professor, became Kent's first Distinguished University Scholar. The university scholars program recognizes faculty who significantly exceed the scholarship necessary for promotion and tenure at U of L and in doing so

achieve a national and international reputation.

Barbee is well known for her work in child welfare, her National Resource Center on Child Welfare

Training and her work in training evaluation models.

PAM YANKEELOV OUTSTANDING TEACHING

Pam Yankeelov, associate dean for student services, was honored as one of the best teaching faculty at the university. She teaches the research sequence of the master's in social work program. The sequence is largely considered by students to be one of the most demanding and challenging courses at Kent School.

Yankeelov has a unique ability to get students excited about research. She is genuinely invested in students' professional development and success. She



synthesizes, organizes and presents complex information in a practical manner through the use of real life examples, humor and energy.

In the classroom and in her interactions with students, Yankeelov strives to promote a spirit of community, foster student investment and cultivate student pride.

JANE THIBAUT MULTICULTURAL TEACHING

Jane Thibault, a part-time Kent School faculty member who teaches gerontology, was honored for her multicultural teaching. She is an associate professor in the School of Medicine's Family and Geriatric Medicine Department.

Thibault has been responsible for leading the "Culturally Competent Health Care" section of the School of Medicine's "Introduction to Clinical Medicine" course for seven years. One focus of her work has been the cultural experience session in which students experience another culture through religious services or other events. The idea is for students to know what it feels like to be culturally different so they can empathize with patients from other cultures who often feel lost in the culture of Western medicine.

Thibault has expanded the realm of cultural competency in the medical curriculum to include not only other geographic cultures but also cultures of the aged, homosexual or transgendered individuals and other groups. She also is introducing spiritual history into the medical and social work curriculum.

LIZ DUMBAUGH MARTIN COMMUNITY SERVICE AWARD

Liz Dumbaugh Martin, a Kent School alumna and staff member, was one of

two winners among 10 final nominees for the University Community Service Award. She received the award for her work on a collaborative network for Louisville's Preston Corridor Improvement Plan.

Martin mobilizes small city businesses and residents by establishing connections at federal, state and metro levels.

(Watch an animated rendering of the Preston Corridor's expected improvement over time at www.prestonbiz.com and see the project site at www.bnainc.org.)

Martin and her husband, second-year medical oncology fellow Monte



Martin, also have published a children's book *Louisville A to Z*. Part of the profits from the alphabet book of colorful photos and descriptions of

Louisville landmarks and facts will benefit the Preston Corridor Improvement Plan.

"Community development is a big part of social work," says Martin, director of the University Training Consortium Project at Kent School.

The Martins, parents of a son and daughter, say they wondered why Louisville, unlike other cities, didn't have such a book to teach children about where they live. (In the book, "U" is for University of Louisville.)

For more information on the book, visit www.louisvilleatoz.com.



Research Fever!

As the spring semester wound to an end, 158 Kent students celebrated during the sixth annual Research Fair, which had as its theme this year "Research Fever: Catch It!" The graduating master's students displayed their project findings in poster displays and papers to faculty members and representatives of the 100 agencies for which they do the research. The wide range of topics included restoring voter rights to former felons, recognizing mental illness among refugees and immigrants, and much more.

ALUMNI NOTE: DAVIDSON HONORED FOR OUTSTANDING ACHIEVEMENT

During the Kentucky School of Alcohol and Other Drug Studies this past summer, Kent School alumnus Jay Davidson was awarded the prestigious Michael E. Townsend Outstanding Leadership Award.

The award recognizes Davidson's outstanding achievements in substance abuse treatment in Kentucky. The award is named for the past director of the Kentucky Division of Substance Abuse.

Making a PACT *Continued from page 5*

community with appropriate utilization of community resources.

Brown's original conceptualization of PACT was based on his prior work with divorcing families, specifically with his "Families in Transition" (FIT) program, a six-hour court mandated educational program for divorcing parents with children in Jefferson County Family Court.

The PACT program is unique in that it considers protective factors like a strong relationship with a caring adult, a parent's relationship with the child and linkage with community resources that are critical to a child's well being.

Two judges in Family Court will begin to identify and refer appropriate families to PACT. Bledsoe and Yankeelov will plan a comprehensive evaluation system that will measure the degree to which the aforementioned goals are achieved. The funding for this project will provide a first-ever controlled study to examine the effects of a collaborative intervention model on children's well being in divorced, high conflict families.

— Pamela Yankeelov

Legislative Advocacy

Kentucky Sen. Julie Denton and Rep. Jim Wayne, both social workers, were among panelists at a Kent School session this past spring on "Legislative Advocacy That Works." The joint meeting of sections of the class "Issues in Policy and Service Delivery" informed social work students about methods

that succeed in promoting health and welfare issues. Other panelists were Kentucky Sen. Gerald Neal, Paula Bendl Smith of the Kentucky Child Care Network and Kent student and community activist Nikki Henderson.



Coming Home

KENT SCHOOL 2005 ALUMNI FELLOW: STEPHAN L. BUCKINGHAM

Last Fall Stephan Buckingham was driving through Louisville on his way back to his home in New York City. It was the first time the Puducah native and 1983 Kent School alumnus had been through the area in several years.

"I was really romanced by the city," Buckingham recalls. "It was fall; the trees were in full color. It was beautiful."

He was even inspired to look at some property and was "just knocked out." After living in New York and Los Angeles for more than 20 years, he was amazed that "you could live so well in such a beautiful place."

As he settled back into Manhattan, thoughts of Louisville continued their courtship. At about the same time, Kent School Dean Terry Singer called and asked him to be the school's 2005 alumni fellow.

"That cinched the deal," says Buckingham, who recently bought a house in the Highlands. "It just confirmed that I'd really like to be back here."

Since graduating from U of L, Buckingham has taken an "amazing trip" through the social work field—a journey that started on the frontlines of the AIDS epidemic. The first cases were reported in 1981, but at that time the medical community didn't really know much about the disease. Buckingham, who is gay, first heard of HIV—initially called GRID (Gay Related Immune Deficiency)—while at Kent School.

"What we would read in the gay press was very scary and politically charged," he recalls.

Upon graduating from Kent, Buckingham moved to Los Angeles,

partially inspired by his famous actress and comedienne cousin Lilly Tomlin who lives there. As Buckingham began his first job as a clinical social worker at UCLA Medical Center, he started seeing—scattered throughout the hospital—patients who had this new and poorly understood disease.

"Everybody was very afraid, including the staff," he says.

Soon Buckingham conducted a "needs assessment" at the hospital and a designated position was created to work with patients dealing with HIV, which he assumed. Eventually additional personnel was approved and Buckingham became the AIDS Liaison for the medical center working with the community, developing policy and psychosocial programming, and overseeing all of the HIV psychosocial services.

"In the early days, many families were not very supportive," he says. "A lot of gay men in urban areas, who were already away from their families, were pretty isolated in terms of family support. I would work with patients and whoever they identified as their closest support."

Buckingham quickly extended his work, helping other community-based agencies in Los Angeles develop AIDS programs.

"I was involved early on working with AIDS Project Los Angeles, which ultimately became one of the largest AIDS service organizations in the country," he says. Buckingham would later be the director of mental health for that organization. "It was an amazing time."

After leaving UCLA, Buckingham took a one-year contract to work for a community hospital in Hollywood, helping it

set up a specified designated AIDS unit. He then went to work for several of the physicians he knew from UCLA who formed a specialized private practice in HIV medicine.

"It was one of the first of its kind in the private sector," says Buckingham, who was responsible for all the psychosocial services of the practice, which included psychiatry, neuropsychological services and a full range of counseling options. "The practice included specialists in oncology, infectious disease, immunology, internal medicine, GI, neurology—the whole range."

Buckingham remembers his work in 1980s as fast and furious.

"HIV was a highly visible health crisis that made headlines," he says. "It had all kinds of political and social and ramifications, not to mention the obvious public health concerns. It was a very intense career path. Sometimes consuming and overwhelming, but always incredibly satisfying."

He says it was one of his former Kent professors, the late Ruth Middleman, who inspired him to write about his work with AIDS in the early years.

"She really raised my consciousness," he says. "She said I needed to capture my clinical experiences at UCLA and share them with the profession."

Buckingham wrote an article on women at risk for HIV, which ended up being the first article on women in the professional literature. That article, along with others, launched a whole new career path—training, teaching, research and writing. He went on to write several articles including the psychosocial issues of HIV antibody testing, which became a flash point in the culture.

"Once science and research advanced to the point of being able to identify and test for the virus a whole new range of issues ensued," Buckingham says. "People were afraid to find out their antibody status. They feared they would be treated differently. There was even talk that people might be quarantined and sent away. It was pretty scary."

Buckingham continued to develop his clinical expertise, especially in the area of neuropsychiatric complications and HIV. He has published extensively on the topic, and worked with the American Psychiatric Association as a Work Group Adviser in the publication of the *Diagnostic and Statistical Manual of Mental Disorders, Fourth Edition*.

Always eager to take on new challenges, Buckingham in recent years coupled his vast clinical experience and writing skills into pharmaceutical marketing, especially for antiretroviral therapies used to treat HIV.

"Most social workers don't find themselves working in an advertising agency," he says. "But I enjoyed it. I learned a lot. It really shaped a great deal of what I appreciate about the context in which medical care is delivered now—how business and money really control the healthcare arena."

The many proud moments Buckingham has experienced throughout his career have come in unexpected ways, he says.

"They come in working with someone in whom you see change," he says. "Or, when you see people coping better, or working through some fear. Those are the moments that really shape you as a clinician—those experiences that can only come when you are in relationship with people."

For now, Buckingham, who continues to do consulting and has just taken a job with the State of Kentucky, is happy to be living back in Louisville and taking life a little slower.

"The world has become so small," he says. "And Louisville is a really nice, cosmopolitan kind of place that still offers a small town feeling—affordable living, good people and a range of things to do. I love it." 🌻

—By Kevin Hyde



"HIV was a highly visible health crisis that made headlines. It had all kinds of political and social ramifications, not to mention the obvious public health concerns. It was a very intense career path. Sometimes consuming and overwhelming, but always incredibly satisfying."

In Memoriam

The Kent School of Social Work recently lost two of its family members. The school was saddened to hear about the deaths of Dr. Ruth Middleman and Ernest "Camp" Edwards. Because of their impact at the Kent School and to the social work community, friends and families of both Middleman and Edwards have established endowed scholarships in each of their names.

ERNEST "CAMP" EDWARDS ENDOWED SCHOLARSHIP

Edwards graduated from Kent School in 1969. He was the director of Youth Services in Louisville during the 1970's and was the executive presbyter of the Presbytery of Louisville in the 1980's and 1990's. His work in the Smoketown community included serving as the interim executive director of the Presbyterian Community Center and overseeing the construction of the center's new building in 2001.

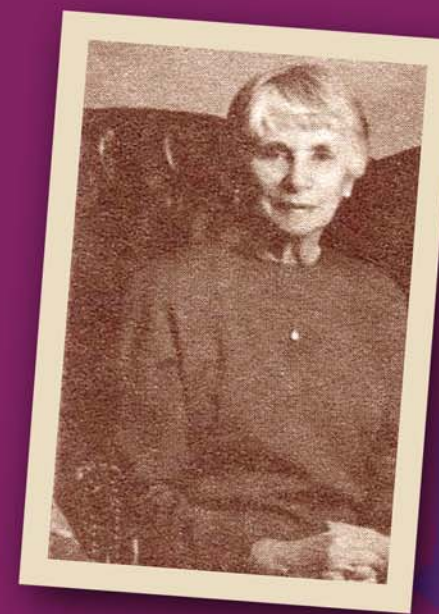


The Ernest "Camp" Edwards Endowed Scholarship will be awarded to an advanced year student in the macro program.

And because Camp's first and foremost commitment was to provide and improve services to Smoketown, the scholarship recipient will conduct their practicum to benefit that community.

RUTH MIDDLEMAN ENDOWED SCHOLARSHIP

Dr. Ruth Middleman became a staple at Kent School for more than two decades until her retirement in 1994. She was a co-founder and past president of the Association of Certified Social Group Workers, a prolific writer, and one the greatest advocates the social work community could have. She received the Lifetime Achievement Award from the National Association of Social Workers in 1995 for her contributions to the field.



The Ruth Middleman Endowed Scholarship will benefit a student who best exemplifies the characteristics of Dr. Middleman and her interests.

CONTACT INFORMATION

If you would like to support either of these scholarships or would like additional information, please contact Hyemi Sevening, Director of Development at:

Hyemi Sevening
Director of Development
Kent School of Social Work-Oppenheimer Hall
University of Louisville
Louisville, KY 40292
(502) 852-4919
hyemi.sevening@louisville.edu

Office of the Alumni Association
University of Louisville
Louisville, KY 40292

Address Service Requested

UNIVERSITY of LOUISVILLE
dare to be great

Non-Profit Org.
U.S. Postage
Paid
Louisville, KY
Permit No. 769