

University of Louisville

# In Fact...

## Office of Academic Planning and Accountability

### Special points of interest:

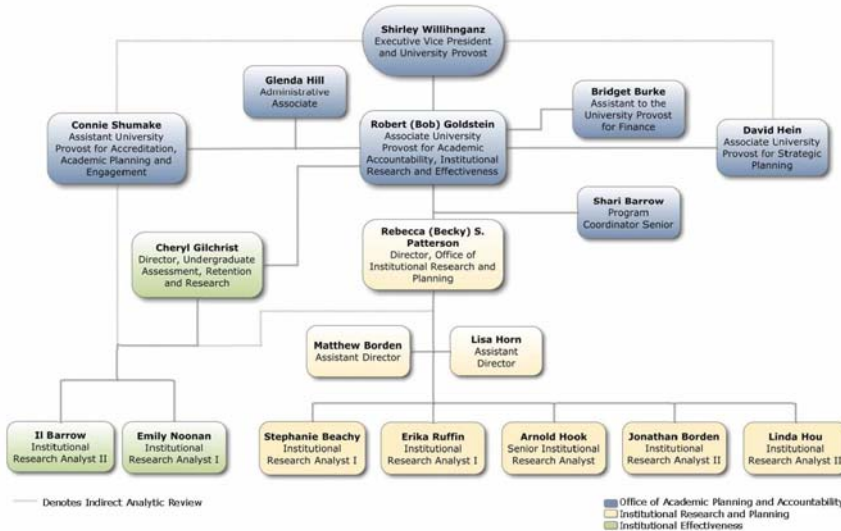
- Phi Beta Kappa, the nation's oldest academic honors society, site visit in March
- NCAA recertification
- Accreditation team visits from:
  - ◆ American Bar Association
  - ◆ Commission on Collegiate Nursing Education
  - ◆ National Association of Schools of Public Affairs and Administration
  - ◆ National Association of Schools of Theatre

The Office of Academic Planning and Accountability (OAPA) is located on the third floor of the Miller Information Technology Building on the University of Louisville's Belknap Campus. For more information about our office please visit our website: [louisville.edu/institutionalresearch](http://louisville.edu/institutionalresearch)

Robert (Bob) Goldstein, MPH, is the Associate Provost for Academic Accountability, Institutional Research, and Effectiveness. He oversees the Office of Institutional Research and Planning, Office of Institutional Effectiveness, and Accreditation. He joined the University in January, 2004, as the Director of Institutional Research and Planning.



Bob Goldstein is the Associate Provost for Academic Accountability, Institutional Research, and Effectiveness.



### Inside this issue:

Institutional Research and Planning	2
Publications	2
Institutional Effectiveness	3
Accreditation and Academic Programs	3
Data Requests	4
Contact OAPA	4

## What's New?

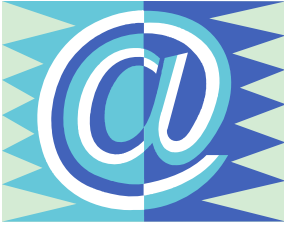
### Upcoming Presentations

UofL will be represented at the upcoming annual Association for Institutional Research (AIR) Forum in Toronto in May. A proposal by Becky Patterson, Arnold Hook, IL Barrow, Matthew Borden, and Bob Goldstein entitled "Informing Student Retention Programming Through Predictive Modeling" has been accepted for presentation.

### Shout Out

Lisa K. Horn has been promoted from Planning Analyst II to Assistant Director for Operations and Support Services. Lisa will continue her work in the area of planning in addition to assuming responsibilities related to online course evaluation administration. Congratulations, Lisa!

## Institutional Research and Planning (IRP)



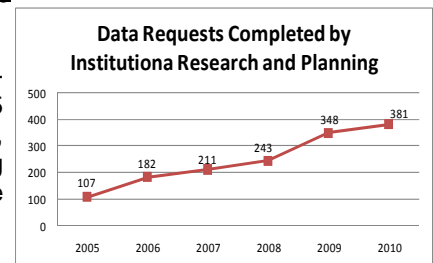
Over 82,000 email invitations were released to students in fall 2010.

### Online Course Evaluations

UofL's transition to an online course evaluation administration process during fall 2010 was a success. Over 82,000 email invitations were released to students. The overall university-wide response rate was approximately 56%. Some academic units achieved response rates over 80%. The winners of the faculty incentives were announced in early January. A list of winners is located at: <https://louisville.edu/institutionalresearch/news-and-announcements.html>. The spring 2011 implementation is underway. Evaluations for most courses will be released during April. Marketing campaigns for student and faculty will begin soon! More information can be found at: <http://louisville.edu/institutionalresearch/onlinecourseeval-marketing>

### Record Number of Data Requests

The number of data requests completed by Institutional Research and Planning (IRP) has increased from 107 in 2005 to 381 in 2010. This represents a 256% increase. Also, please note that in 2010, Institutional Research and Planning assumed the responsibility of administering online course evaluations for the university.



*“The number of data requests completed by IRP has increased by **256%** from 2005 to 2010”*

### Did you know?...

IRP produces informing reports each semester and academic year. Examples include:

- Trend reports which detail a profile of our first-time students, retention, and graduation rates
- Credit hour production reports by academic unit
- Faculty load (restricted SharePoint site) analysis by academic year

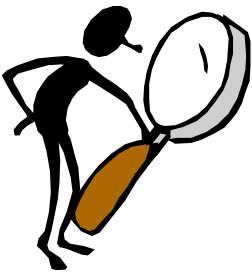
These reports are available to the public on our website at: <https://louisville.edu/institutionalresearch/key-institutional-data>. Please contact IRP if you have questions about report availability or content.

### Statistical Analysis

In addition to serving as the official university data repository and completing all local, state, and federally mandated reporting, IRP provides statistical analysis which serves as decision support for administrative and academic units. The analysis includes both descriptive and inferential statistics. Recent reports produced include:

- Creation of a predictive enrollment retention model
- Retention analysis of 'Greek' students
- Quantitative analysis of the Diversity and Inclusion Survey administered last spring

Please contact IRP for more information regarding the results of these reports or if you wish to request statistical analysis using university data.



## Publications

The 2010-2011 Just the Facts is available and located at: <https://louisville.edu/institutionalresearch/institutional-research-planning/just-the-facts.html>. Check out our new design!

The 2010-2011 Common Data Set is now available at: <https://louisville.edu/institutionalresearch/institutional-research-planning/common-data-set.html>.

Also, the 2010-2011 Fact Book will be posted to the IRP website soon. Look for a new design with detailed information about our student population which has never before been published in the document. Newly added sections include information on transfer students, veterans, honor students, and those enrolled in distance education courses.



The 2010-2011 Just the Facts features a new design.

## Institutional Effectiveness (IE)



IE is having a busy spring semester administering national assessments and university-initiated surveys

Institutional Effectiveness (IE) is having a busy spring semester administering national assessments and university-initiated surveys. IE continues to coordinate the university-wide learning assessment initiatives by administering the Collegiate Assessment of Academic Proficiency (CAAP) Writing Essay to seniors in randomly selected 400- and 500-level courses.

UofL is participating in a national study of first-year students. IE is coordinating the administration of Your First College Year (YFCY). This survey, conducted by the Higher Education Research Institute (HERI) at UCLA, asks freshmen about their experiences during their first year of college.

IE is collaborating with Information Technology (IT) in a national survey, ECAR (EDUCAUSE Center for Applied Research) Study of Students and Information Technology, 2011 which explores undergraduate experiences with technology.

IE will be surveying students who transferred from a KCTCS (Kentucky Community and Technical College System) institution to UofL as a statewide effort sponsored by CPE (Council on Postsecondary Education) to learn more about students' transfer experiences.

IE is working directly with Indiana University to coordinate the administration of the Faculty Survey of Student Engagement (FSSE). The survey is designed to gain perspective on student engagement from faculty who teach at least one undergraduate course in the current academic year.

**Questions about IE?** Contact Cheryl Gilchrist, Director [cbgilk01@louisville.edu](mailto:cbgilk01@louisville.edu)

## Accreditation and Academic Programs (AAP)

Accreditation and Academic Programs (AAP) is a unit of the OAPA. The mission of AAP is to coordinate all matters concerning the Southern Association of Colleges & Schools (SACS). The university was initially accredited by SACS in 1915. The SACS reaffirmation process takes place every 10 years and the current accreditation is active through 2017. A new addition to the affirmation process is a 5<sup>th</sup> Year Interim Report that will be due in March 2013. Committees will be forming soon to start work on the interim report which will also include an impact study of the university's Quality Enhancement Plan – Ideas to Action.

The AAP unit also works with each academic unit on program-level accreditation. There are four accreditation team visits scheduled for spring 2011.

- Law – American Bar Association
- Nursing – Commission on Collegiate Nursing Education
- Public Administration – National Association of Schools of Public Affairs and Administration
- Theatre Arts – National Association of Schools of Theatre

Each visit provides valuable feedback that help support efforts to improve the programs. Also, the university is interested in expanding the number of accredited programs where possible as a measure of institutional effectiveness. More information about the accreditation process can be obtained by contacting Connie Shumake, Assistant University Provost for Accreditation, Academic Programs and Engagement. The university's official listing of Institutional and Professional Accreditations can be found at <http://louisville.edu/about/accreditations.html>

---

*"The SACS reaffirmation process takes place every 10 years and the current accreditation is active through 2017."*

---



Connie Shumake, Assistant University Provost for Accreditation, Academic Programs and Engagement.



## Need Data?

Please visit our website at <http://louisville.edu/institutionalresearch> for posted reports and analyses.

Additionally, we have several online tools which provide data on degrees, enrollment, and faculty/staff.

If you have a data request, please submit a **Data Request Form** available on our homepage.

Miller Information Technology Center  
305 MITC  
University of Louisville  
Louisville, KY 40292

Phone: 502-852-6169

Fax: 502-852-2344

E-mail: [uoflirp@louisville.edu](mailto:uoflirp@louisville.edu)



<- IRP Staff

(Left to Right)  
Jonathan Borden,  
Becky Patterson,  
Shari Barrow,  
Lisa Horn,  
Linda Hou,  
Stephanie Beachy,  
Matthew Borden,  
Erica Ruffin,  
Arnold Hook



<- IE Staff

(Left to Right)  
Glenda Hill,  
Cheryl Gilchrist,  
Emily Noonan,  
Il Barrow

**We're on the Web:**

[http://louisville.edu/  
institutionalresearch](http://louisville.edu/institutionalresearch)