

i2a

ideas to *action*

**ANNUAL REPORT**

2008-2009

---

---

---

## Executive Summary

This executive summary of the Ideas to Action (i2a) Annual Report 2008-2009 provides an overview of our achievements in the second year of implementation of this initiative. This year's creation of infrastructure and programs, which involved large numbers of faculty, staff and students with i2a, was built upon the 2007-2008 initial year of exploratory work on establishing frameworks and outcomes. It summarizes our campus work toward achieving the student learning outcomes set forth in our quality enhancement plan (QEP).

The i2a initiative is a multi-year initiative to guide our sustained and shared focus on continuous improvement of teaching and learning across the undergraduate experience at the University of Louisville. The i2a Task Group and an i2a staff team are leading the effort across departments and programs to foster the growth of students' critical thinking skills and to create integrative learning projects -- known as "culminating undergraduate experiences" -- to guide students in applying their disciplinary knowledge in authentic or real-world contexts. The QEP is part of the commitment to reaccreditation for higher education institutions that belong to the Commission on Colleges (COC) of the Southern Associate of College and Schools (SACS).

The 2008-2009 academic year marked the second year of i2a implementation. The i2a initiative expanded its focus this year by adding numerous programs that brought together faculty, staff and students to serve as teaching and learning "trailblazers" across the dimensions of i2a. After a successful pilot program, the i2a team formalized the Faculty Learning Community on Critical Thinking (FLC-CT) to support faculty in the development of critical thinking skill building across the curriculum. As of May 2009, FLC "alums" include 34 faculty teaching a total of 2,810 students. You can view exemplary course artifacts produced by FLC-CT faculty participants, and watch and listen to FLC-CT faculty discuss their experiences in a new video, at the i2a resources webpage: <http://louisville.edu/ideastoaction/resources>.

Over 150 faculty and staff came together in May 2008 to learn about, and apply, the principles of critical thinking as part of the Inaugural i2a Institute: Developing Critical Thinkers. Nationally recognized facilitators and speakers led interactive workshops, and concurrent sessions featured the work of UofL faculty and staff sharing best practices for fostering critical thinking skills in their courses and programs: <https://louisville.edu/ideastoaction/i2a-institute>.

The i2a initiative continued to harness the power of partnerships through growing its list of collaborators, including advancing the efforts of individual academic departments with support from i2a unit facilitators (<https://louisville.edu/ideastoaction/leadership/i2a-facilitators.html>) and members of the i2a Task Group (<http://louisville.edu/ideastoaction/leadership/taskgroup>) who serve on a variety of i2a subcommittees. Campus-wide workshops on i2a topics are offered through the Delphi Center and customized workshops and sessions are designed and offered at the request of units and programs (<https://louisville.edu/ideastoaction/resources/presentations>). In 2008-2009, i2a projects and programs were the subject of a number of media features that are assembled on the i2a website (<https://louisville.edu/ideastoaction/resources/press>).

After a 2008 benchmarking and research project, the i2a Task Group's Culminating Experiences Subcommittee proposed "defining features" of the new culminating experience component of i2a. Members of the i2a Task Group and faculty who participated in the Spring 2008 Culminating Experience Faculty Project provided feedback on these proposed CE "defining features" that will shape the future of i2a. The i2a Culminating Experiences Subcommittee drafted a culminating experience rubric and related assessments to be piloted by UofL faculty during the 2009-2010 academic year as part of the Faculty Learning Community on Culminating Experiences (FLC-CE). The working draft of these assessment tools are available at: <https://louisville.edu/ideastoaction/what/assessment>.

The i2a team forged new i2a collaborations between academic affairs and student affairs by creating the Collaborative Learning Community (CLC) in 2008. The CLC promotes the integration of critical thinking vocabulary, outcomes and skill building into the work of UofL staff from student affairs, academic affairs, and student services. The CLC cohort of 14 staff members met regularly to develop new critical thinking learning goals, tools and assessments to infuse into their departmental and unit programs. To learn more about their groundbreaking projects, go to: <https://louisville.edu/ideastoaction/clc/clc.html>.

The Lights, Camera... Ideas to Action program was a new partnership between i2a, the Delphi Center, and the Digital Media Suite. This campus-wide curricular and creative project invited faculty and students to design and create multimedia projects in order to

put into action the knowledge and ideas from course content. The original digital projects by students were showcased at the April 13, 2009 i2a Day event in the Red Barn on campus. Over 500 faculty, staff and students attended this event, designed to boost awareness about the i2a initiative across all populations on campus and to provide a public viewing of i2a student projects (<https://louisville.edu/ideastoaction/i2a-day>). The event also showcased the innovative, community-focused work of Fine Arts professor Mary Carothers and students in her Collaborative Projects course, funded by an i2a SUN Grant: <http://collaborativeshelter.blogspot.com>.

Fall 2008 was the debut of the i2a SUN Grants program to support the development and integration of i2a innovations across the undergraduate experience at UofL. The SUN Grant program annually offers multiple grants of up to \$5,000 for UofL faculty and staff to develop, implement, and assess large-scale projects that will directly and significantly support the sustained incorporation of selected i2a outcomes into undergraduate programs and courses. In 2008, nine i2a SUN Grants totaling \$42,951 were awarded to individuals and teams of faculty and staff supporting one or more components of Ideas to Action: <http://louisville.edu/ideastoaction/grants>. Select i2a SUN Grants are made available with support from the Office of Community Engagement for curricular projects that serve their mission and constituents.

In June 2008, the i2a Task Group approved a set of documents that will guide i2a pilot programs in the departments in 2009-2010 and inform the ongoing

refinement of i2a implementation efforts across the campus. The i2a Assessment Subcommittee was instrumental in developing the Protocol for the Use and Refinement of the i2a Evaluation Plan (<https://louisville.edu/ideastoaction/what/assessment>) that assembles i2a outcomes, logic model, rubrics and other materials to guide staff, faculty and student i2a trailblazers in their commitment to enhancing teaching and learning across the undergraduate curriculum.

The latest updates on i2a programs, projects and events can be found on the i2a website at: <http://louisville.edu/ideastoaction>.

---

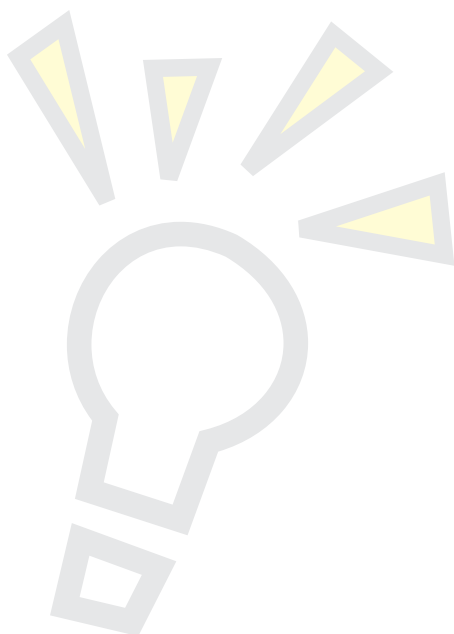
## i2a Background

Ideas to Action, also known as i2a, is UofL's quality enhancement plan (QEP), a commitment to our accreditation agency to place a sustained and shared focus on continuous improvement of teaching and learning across the undergraduate experience at UofL.

Our regional accrediting body, the Commission on Colleges of the Southern Association of Colleges and Schools-Commission on Colleges (SACS-COC), asked all member institutions to develop and implement an initiative related to student learning that is embedded within their respective institution-wide planning and evaluation process.

The dual focus of i2a on critical thinking and community engagement took shape after a 2005 appeal from the provost and president for all members of the university community to provide input for "Big Ideas" to direct the future of undergraduate education at UofL. The central themes of i2a are integral to UofL's strategic plan titled "The 2020 Plan: Making It Happen" (<http://louisville.edu/provost/strategicplanning>) in which educational excellence and community engagement are among five key institutional priorities.

During this i2a multi-year initiative, phased into the undergraduate curriculum between 2007 and 2017, we are fostering critical thinking skills and culminating experiences across academic, co-curricular and extra-curriculum dimensions of the university. The Richard Paul-Linda Elder critical thinking framework, adopted by our campus as part of i2a, has given us shared vocabulary to talk about, teach and evaluate critical thinking. This common framework helps us collectively and individually guide students in exploring, practicing and evaluating



**Table 1: Faculty Pilot Program – Spring 2008**

Last Name	First Name	Course Number	Course Name	# of Students
Burnet	Jennie	ANTH336	War and Society	4
Carter	Jim	PHIL 211	Critical Thinking	40
Collins	Wanda	SW 604/605	Foundation Practice I/II	46
Elhaj	Imad	FIN 370	International Finance	169
Fuller	Roy	HUM 216	Introduction to World Religions	60
Gagne	Patricia	SOC 320	Social Theory	72
Hayden	Theresa	JA 325	Research Design	150
Hieb	Jeff	ENGR 201	Engineering Analysis III	116
Lewis	Jim	ENGR 100	Introduction to Engineering	95
Mansfield-Jones	Jennifer	BIO 262	Human Anatomy and Physiology Laboratory	460
McNamara	Ahamus	ECE 600	Semiconductor Principles	25
Swank	Anne Marie	HSS 492	Exercise Science Internship	75
Yohannes	Tamara	ENGL 312	American Literature II	100
Boyd	Lynn	MGMT 201	Business Statistics	20
Collier	Susan	DHED 420	Clinical Teaching Elective	33
Graham	Jim	ECE 496	Professional Issues & Current Topics Seminar	15
Hardin	Tim	CECS 121	Program Design in C	60
Maron	Mel	ENGR 201	Engineering Analysis III	35
Marshall	Gul	SOC 320	Social Theory	24
McCarthy	John	ART 407	Art Methods for Elementary & Middle School	40
Mills	Rose	ENGL 373/ WGST 325	Women in Literature	62
Moseley	Hunter	CHEM 547	Biochemistry II	71
Mujica	Mari	WGS 201	Women in American Culture	34
Singleton	Jackie	DHED 314	Dental Hygiene Principles of Practice II	28

the thinking skills that are necessary for success in our disciplines and for life in the 21st century.

Ideas to Action includes an emphasis on integrative learning; students are asked to integrate several semesters of critical and disciplinary thinking in order to complete a “culminating experience” before they graduate. This “culminating experience” might be a community-based internship, service learning project, interdisciplinary research endeavor, or other project. Undergraduate students at UofL will see exciting changes unfold over the coming years as faculty and staff begin to infuse the language of critical thinking more explicitly into their work and students are guided in applying course concepts to

authentic, “real world” problems as part of existing and new culminating experience assignments. The i2a effort provides our campus community with a shared and sustained focus on student engagement, curriculum development and an improved climate for learning.

In the 2008-2009 academic year, the i2a staff team and the i2a Task Group expanded its offering of programs and projects to support faculty and staff members working within and across departments and divisions to put into place i2a innovations and measure i2a impact on student learning. This year’s creation of infrastructure and programs, which involved large numbers of faculty, staff and students

with i2a, was built upon the 2007-2008 initial year of exploratory work on establishing frameworks and outcomes. This report summarizes our campus work toward achieving the student learning outcomes set forth in our quality enhancement plan (QEP).

---

## Programs & Services

### Faculty Learning Community on Critical Thinking

The Ideas to Action Faculty Learning Community (FLC) on Critical Thinking was launched in 2008-2009 after a successful pilot program in spring 2008. The program brought together a cross-disciplinary faculty cohort of 10-12 faculty members who met for eight sessions during each semester. As of May 2009, FLC "alums" include 34 faculty teaching a total of 2,810 students.

Faculty participating in the FLC semesters made revisions and modifications to their courses, infusing i2a concepts into their teaching throughout the semester and beyond. In April 2009, a Zoomerang survey was sent to capture longitudinal quantitative data from all of the FLC participants. There was an 88% response rate to the survey. Key findings from the majority of respondents indicate faculty are incorporating critical thinking and assessment activities either "Somewhat more..." or "A considerable amount more than before participating in the FLC." The primary way faculty report they are serving as i2a advocates is by encouraging and/or supporting future FLC nominees.

The i2a team has collected an archive of revised syllabi, assignments, exam prompts, assessments and other materials developed to promote students' critical thinking skills. These exemplary FLC course artifacts are available on the i2a website: <http://louisville.edu/ideastoaction/resources>.

In 2009, a new video titled *UofL Faculty Speak* was created to capture the voices and experiences of FLC "alum" who have been pioneers with infusing i2a principles into their courses. You can watch and hear this video, in which faculty report on their experiences with teaching for critical thinking, at the i2a website: <http://louisville.edu/ideastoaction/resources/media>.

The infusion of i2a into the courses listed in Table 1 resulted in over 1,800 students exposed to new instructional elements and assignments that explicitly promote critical thinking skills. Data collected in May 2009 suggest these faculty are transferring their new

techniques and strategies into courses and semesters beyond their original FLC focus.

### The Culminating Experiences Faculty Project

In Spring 2009 semester, faculty members from various undergraduate programs met regularly with i2a team members to explore the dimensions of what the new i2a "culminating experiences" program requirement might look like for undergraduate faculty and students at UofL. The i2a culminating experience is a proposed experiential learning project in which students integrate and apply their critical thinking skills to address an authentic issue or topic as part of their major or degree program.

The i2a staff team is preparing to launch its Faculty Learning Community on Culminating Experiences in 2009-2010 in order to build on the exploratory work of this initial faculty project.

Spring 2009 faculty participants included:

- Danielle Brown, Department of Psychological and Brain Sciences
- Sherri Brown, Department of Teaching and Learning
- Mary Carothers, Department of Fine Arts
- Perri Eason, Department of Biology
- Lora Haynes, Department of Psychological and Brain Sciences
- Michael Losavio, Department of Justice Administration
- Ralph Merkel, Department of Communication
- Keith Mountain, Department of Geography and Geosciences
- Armon Perry, Kent School of Social Work
- Tom Rockaway, Department of Civil and Environmental Engineering
- Charles Sharp, Department of Marketing
- Muffy Sinclair, Department of Communication
- Amy Steiger, Department of Theatre Arts
- Ted Strickland, Department of Computer Information Systems
- Nancy Theriot, Department of Women's and Gender Studies
- David Wheatley, Speed School of Engineering
- David Wicks, University Honors Program

### Collaborative Learning Community (CLC)

The Collaborative Learning Community (CLC) is a new i2a program that ran from September 2008-May 2009 and will continue into the next academic year. The CLC promotes the integration of critical thinking vocabulary, outcomes and skill building into the work of UofL staff from student affairs, academic affairs, and student services. The CLC cohort of 14 staff members met regularly for ongoing coaching and peer support as they integrated specific elements of the Paul-Elder critical thinking model into the development, implementation and assessment of departmental and unit programs.

**Table 2. 2009 CLC Projects**

<b>Department &amp; Participant Name</b>	<b>Project Description for 2009</b>
<b>Campus Health Services</b> Karen Newton	Re-designing the Certified Peer Health Educator course using a critical thinking skills framework. Materials for Health Advocate Volunteers will be piloted in Fall 2009.
<b>Career Development Center</b> Leslye Erickson & Becky Clark	Integrating the critical thinking model into students' academic major and career decision-making methods.
<b>Civic Engagement, Leadership &amp; Service</b> Pam Curtis	Injecting critical thinking in a measurable way into ECPY 355 - Developing Campus Leaders course.
<b>Cultural Center</b> Michael Anthony	Revising the mission and goals and developing the learning outcomes for the Center using the critical thinking model.
<b>First Year Initiatives</b> Chrisy Metzger & Katie Partin	Infusing critical thinking explicitly into the Book-in-Common program and clarifying the program's mission, goals, and outcomes.
<b>Housing and Residence Life</b> Shannon Staten & Dorothea Muller	Updating the department's student learning outcomes to specifically convey and assess the skills students acquire in a residence hall community.
<b>R.E.A.C.H. Learning Resource Center</b> Julie Hohmann	Creating feedback instruments for students and tutors to measure critical thinking and problem solving skills.
<b>R.E.A.C.H. Ambassador Program</b> Leighann Valdez	Revising student reflection activities to help students think critically about their communication, leadership and interpersonal skills.
<b>Undergraduate Academic Advising</b> Janet Spence & Nora Allen	Planning a pilot program in which advisors infuse critical thinking language to promote students' critical thinking skills.

**i2a Supporting Undergraduate iNnovation (SUN) Grants**

The i2a SUN Grants program was created in 2008 to support the development and integration of i2a innovations across the undergraduate experience at UofL. The SUN grant program annually offers multiple grants of up to \$5,000 for UofL faculty and staff to develop, implement, and assess large-scale projects that will directly and significantly support the sustained incorporation of selected i2a outcomes into undergraduate programs and courses. More information can be found at the SUN grant homepage: <http://louisville.edu/ideastoaction/grants>.

In 2008, nine i2a SUN Grants totaling \$42,951 were awarded to individuals and teams of faculty & staff supporting one or more component of Ideas to Action (see Table 3).

Students who participated in Mary Carothers' and Annette Allen's "Shelter" project reported out about the impact of their unique campus-community partnership. The themes that emerged from student reflections include a new and deep appreciation for collaboration with colleagues across disciplines and with community members. Students also reported that the "hands on" experiential learning component of the course helped them make profound discoveries and connections within and outside the boundaries of the course content.

**Table 3. SUN Grant Awards**

Award Recipients	Project Title
<p><b>Leslye Erickson</b> Career Development Center</p> <p><b>Amy Hirschy</b> Department of Education Counseling &amp; Psychology College of Education &amp; Human Development</p>	<p>“Critical Thinking in Choice of Academic Major: Career Exploration, Decision Making and Clarity”</p>
<p><b>Patricia Cerrito</b> Department of Mathematics College of Arts &amp; Sciences</p>	<p>“Statistical Analysis and Critical Thinking”</p>
<p><b>Jeff Hieb</b> Department of Engineering Fundamentals Speed School of Engineering</p>	<p>“Teaching and Assessing Engineering Reasoning in Differential Equations”</p>
<p><b>Rich Lewine</b> Department of Psychological &amp; Brain Sciences College of Arts &amp; Sciences</p>	<p>“Mood, Critical Thinking and Cognitive Flexibility”</p>
<p><b>James Lewis and David Wheatley</b> Department of Engineering Fundamentals Speed School of Engineering</p>	<p>“Introduction to Engineering Course Revamp”</p>
<p><b>Mary Pat Wall, Karen Black, Diane Chlebowy, Vicki Hines-Martin, Patricia Martin, and Jackie Singleton</b> School of Nursing</p>	<p>“Critical Analysis in Nursing Case Management”</p>
<p><b>Mary Carothers</b> Department of Fine Arts College of Arts &amp; Sciences</p> <p><b>Annette Allen</b> Department of Humanities College of Arts &amp; Sciences</p>	<p>“Shelter”</p>
<p><b>Donald J. Hagerty</b> Department of Civil &amp; Environmental Engineering Speed School of Engineering</p>	<p>“A system to facilitate capstone course culminating experiences that involve community engagement through Signature Partnership community partners”</p>
<p><b>Jon Lee</b> Department of Teaching &amp; Learning College of Education &amp; Human Development</p>	<p>“Developing Parental Support for Children’s Early Language Development: An Intervention Plan”</p>



### **i2a Day**

Over 500 faculty, staff and students attended the first campus-wide i2a Day on Monday, April 13th, 2009 at the Red Barn. This event was designed to boost awareness about the i2a initiative across all populations on campus and to provide a public viewing of i2a student projects.

The structure of the event allowed students, faculty and staff to get the latest information and resources about i2a and enjoy lunch and conversation with their colleagues. The main feature of i2a Day was the showcase of original student work, including over two dozen digital film projects completed during the Spring 2009 semester as part of Lights, Camera...Ideas to Action (see below).

The showcase also included students displaying and discussing their collaborative art, poetry and photography projects as part of a Spring 2009 team-taught course with faculty members Mary Carothers (Fine Arts) and Annette Allen (Humanities). These original course projects were funded by an i2a SUN grant and received accolades in local and campus press outlets. Read more at: <http://louisville.edu/ideastoaction/i2a-day>.

### **Lights, Camera...Ideas to Action**

The Lights, Camera...Ideas to Action program was a new partnership between i2a, the Delphi Center, and the Digital Media Suite in spring 2009. This project was a campus-wide curricular and creative vehicle for faculty and students to design and create multimedia

projects in order to put into action the knowledge and ideas from course content. Student original film projects were showcased at the April 13, 2009 i2a Day event. Based on data collected from the students who participated in Lights, Camera, Ideas to Action, greater than 80% of the students reported that this project was effective to very effective in enhancing their critical thinking abilities.

See Table 4 for Ideas to Action faculty participants and project titles.

### **Inaugural i2a Institute: Developing Critical Thinkers**

The Inaugural i2a Institute (May 27-29, 2009) brought together over 150 faculty and staff on UofL's Shelby Campus to engage in a series of workshops and interactive sessions focused on the teaching and learning of critical thinking in a higher education setting. Grounded in the concepts and vocabulary of the Paul-Elder critical thinking framework, the i2a Institute provided a collaborative environment for participants to explore how critical thinking concepts and a common vocabulary can apply to their work with students across disciplines and departments.

Institute participants came from across the region and the country to explore and share best practices in teaching and learning critical thinking. Nationally recognized facilitators and speakers led intensive workshops and sessions on critical

**Table 4. Lights, Camera...Ideas to Action Participants**

<b>Faculty</b>	<b>Unit</b>	<b>Project Title</b>	<b>Number of Students</b>
Debra Bauder	Department of Teaching & Learning, College of Education & Human Development	Digital Storytelling	26
Richard Fee	Department of Health & Sports Sciences, College of Education & Human Development	Health Education Public Service Announcements	25
Jon Lee	Department of Teaching & Learning, College of Education & Human Development	Child Care Quality Video Mash-up	25
Gabrielle Mayer	Department of Fine Arts, College of Arts & Sciences	What is Drawing? Animation	22
Christine Sherretz	Department of Teaching & Learning, College of Education & Human Development	Essential Traits of Effective Teachers Videos	30



thinking. Concurrent sessions featured the work of UofL faculty and staff sharing best practices for fostering critical thinking skills in their courses and programs.

Institute sessions included the following topics:

- Successful applications of the Paul-Elder critical thinking framework in higher education
- Critical thinking across the curriculum
- The research behind teaching critical thinking
- Assessing critical thinking
- Supporting critical thinking and organizational change

- Critical thinking and connecting the classroom to co-curricular and campus programs
- Promoting critical thinking and active learning

To access Institute presentations and materials and view photos, visit: <https://louisville.edu/ideastoaction/i2a-institute>.

### **Instructional Development Workshops**

The i2a staff team worked with the faculty development program in the Delphi Center throughout 2008-2009 to offer a number of workshops on topics related to i2a to faculty and graduate student assistant participants.

**Table 5. i2a Staff Presentations**

<b>Session Title/Presenter</b>	<b>Date</b>	<b>Enrollment</b>
<b>i2a and U</b> Drs. Edna Ross and Cathy Bays	Dine & Discover: September 8, 2008	23
<b>Student Learning Styles and Generational Differences</b> Dr. Cathy Bays	Graduate Teaching Academy: September 18, 2008	23
<b>The Science/Evidence for Critical Thinking, Especially Related to College Students</b> Drs. Edna Ross and Cathy Bays	Part-time Faculty Institute: September 2008	21
<b>Review of the Critical Thinking Model Chosen to Guide UofL's QEP</b> Drs. Cathy Bays and Edna Ross	Part-time Faculty Institute: October 2008	18
<b>Fostering Critical Thinking in Courses and Assignments</b> Dr. Patty Payette	Dine & Discover: October 1, 2008	15
<b>i2a and U</b> Drs. Cathy Bays and Edna Ross	Dine & Discover: October 31, 2008	8
<b>Stimulating Active Learning in the Classroom (Including Clickers)</b> Drs. Marianne Hutti and Edna Ross	Graduate Teaching Academy: November 11, 2008	24
<b>Teaching for Deeper Learning in Clinical Settings</b> Drs. Patty Payette, Patricia Martin, Vicki Burns	Dine & Discover: November 21, 2008	23

## **i2a Task Group**

The i2a Task Group members, including i2a unit facilitators, departmental and student representatives, meet twice a month to guide the strategic planning of the Ideas to Action initiative. Subcommittees worked throughout 2008-2009 to create new programs and put forth recommendations for implementation of i2a priorities. Visit the i2a Task Group webpage to view the list of group members and read meeting minutes: <http://louisville.edu/ideastoaction/leadership/taskgroup>.

The i2a Task Group Subcommittees in the 2008-2009 academic year included:

- Marketing & Website Subcommittee
- Assessment Subcommittee
- i2a Institute Subcommittee
- Culminating Experiences Subcommittee
- SoTL Grants Subcommittee
- SUN Grants Subcommittee
- Faculty Learning Community Subcommittee

## **i2a Campus Sessions & Other Customized Workshops**

The i2a staff team organized and presented customized i2a information sessions and workshops throughout the academic year to a wide variety of campus audiences. Sessions introduced participants to i2a goals and guided participants in learning about and applying the Paul-Elder critical thinking concepts and culminating experiences strategies to their work.

Sessions were customized and delivered to faculty and staff in the following settings:

- Kent School of Social Work Faculty Meeting
- Undergraduate Studies Committee in the College of Business
- Dental Hygiene Faculty
- Teaching and Learning Faculty Group in the College of Business
- Department of Teaching and Learning Faculty
- Resident Director Training
- First Year Initiatives
- Council of Academic Officers
- Academic Advisors In-Service
- Dr. Barry Ceridan's Clinical Patient Management II course in School of Dentistry
- R.E.A.C.H. Tutor Training
- Community Engagement Steering Committee
- Black Faculty & Staff Association
- Student Orientation Staff Training
- Celebration of Teaching & Learning Workshops

## **Campus Collaborators**

A variety of campus units are engaged in ongoing partnerships with i2a. Staff members from across

these divisions and departments are infusing i2a principles and priorities into the development, implementation and assessment of their respective unit goals and programs.

- Office of Community Engagement
- Office of Undergraduate Affairs
- Offices of the Vice Provost for Diversity
- Division of Student Affairs
- General Education Curriculum Committee
- Freshman Orientation Courses

## **Regional & National Presentations**

In 2008-2009, the i2a staff team designed and delivered presentations at the following national and regional conferences in order to showcase and share their work:

- Professional and Organizational Development Network Conference (October 2008)
- Kentucky Council on Post-Secondary Education Conference (May 2009)
- Southern Regional Faculty & Instructional Development Consortium (March 2009)
- Inaugural i2a Institute: Developing Critical Thinkers (May 2009)

## **Regional & National Collaborators**

The i2a initiative developed partnerships and collaborations with a number of regional and national organizations in 2008-2009. These collaborations facilitated the growth of i2a through the sharing and development of resources and presentations for faculty and staff on topics related to organizational change, critical thinking, community engagement, and reflective practice.

- Center and Foundation for Critical Thinking
- Commission on Colleges of the Southern Association of Colleges and Schools (SACS-COC)
- Kentucky Campus Compact
- Kentucky Council on Post-Secondary Education
- Leadership Louisville's Ignite Louisville class of 2009
- Kentucky Network of QEP Leaders

## **Media Features**

In 2008-2009, the i2a initiative and related accomplishments were featured in the following media outlets:

- *The Christian Science Monitor* (March 2009)
- *UofL Web News* (Spring 2009)
- *The Louisville Cardinal* (April 6, 2009)
- *The Louisville Cardinal* (April 20, 2009)
- *The Courier-Journal* (May 2009)
- *Women's Center News* (Spring 2009)

These features are available on the Ideas to Action website at: <https://louisville.edu/ideastoaction/resources/press>.

### **i2a Website**

The i2a website (<http://louisville.edu/ideastoaction>) was expanded significantly in 2008-2009 to include information on programs; relevant resources and materials; meeting minutes; calendar of events; archived presentations, documents and reports. Highlights include the new webpage <https://louisville.edu/ideastoaction/resources/faculty-exemplars> that features a library of new faculty artifacts, assignments and documents created as part of the i2a Faculty Learning Community (FLC) on Critical Thinking, as well as a video featuring faculty reflections on how the FLC has influenced their teaching <https://louisville.edu/ideastoaction/resources/media>.

---

## **i2a Staff**



**Patricia (Patty) Payette, Ph.D.**

Ideas to Action Executive Director  
Associate Director, Delphi Center for  
Teaching and Learning  
502-852-5171  
[patty.payette@louisville.edu](mailto:patty.payette@louisville.edu)



**Cathy Bays, Ph.D.**

Ideas to Action Specialist for  
Assessment  
502-852-5105  
[cathy.bays@louisville.edu](mailto:cathy.bays@louisville.edu)



**Nisha Gupta, Ph.D.**

Ideas to Action Specialist for  
Culminating Undergraduate  
Experiences  
502-852-5104  
[nisha.gupta@louisville.edu](mailto:nisha.gupta@louisville.edu)



**Edna Ross, Ph.D.**

Ideas to Action Specialist for  
Critical Thinking  
502-852-5138  
[edna.ross@louisville.edu](mailto:edna.ross@louisville.edu)



**Harry Pickens**

Special Assistant to the Provost  
for New Initiatives  
502-852-5221  
[hcpick01@louisville.edu](mailto:hcpick01@louisville.edu)

