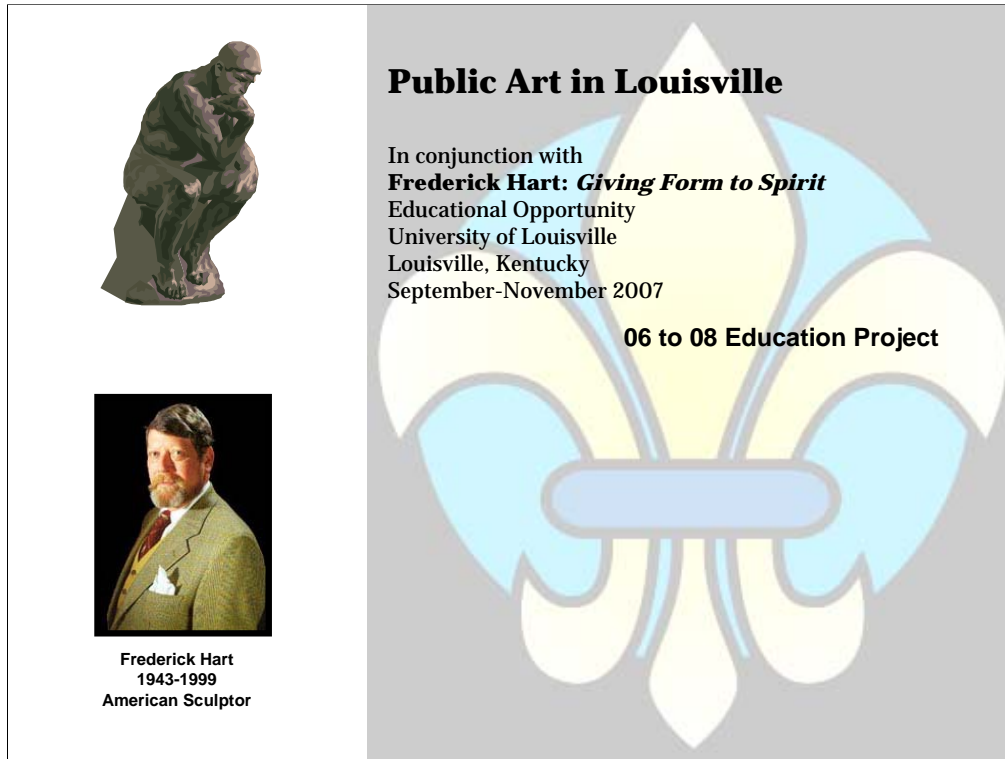


# CORE CONTENT FOR ARTS & HUMANITIES

<b>Public Art in Louisville Project</b>		<b>06-08 Level</b>
<p><b>Introduction:</b>          This project explores the variety of purposes for creating public art. The student will experience, identify and discuss the purposes of public art through examples drawn from the public art of Metro Louisville and Sculptor Frederick Hart as well as other recognizable works. The project will engage students with a knowledge-building presentation that explores how public art can represent ceremonial roles, artistic expressions, narrative pieces and functional works.</p> <p>Additional Activity Option- This project will allow students to take their experience with public art's purposes and create their own work of ceremonial, artistic, narrative or functional public art.</p>		
<b>Sub domain: Purposes for Creating the Arts</b>		
<b>Organizer: Visual Arts</b>		
<b>Grade Levels: 06 to 08</b>		
<b>6<sup>th</sup> Grade</b>	<b>7<sup>th</sup> Grade</b>	<b>8<sup>th</sup> Grade</b>
<p><b>AH-06-3.4.1</b>  <b>Students will identify or explain how public art fulfills a variety of purposes.</b></p> <p><b>Purposes of Art: (different roles of art)</b>  <u>Ceremonial-</u> ritual, celebration, artworks created to support worship ceremonies (e.g. Hart and Louisville- memorials and cathedrals).  <u>Artistic expression-</u> artwork to express or communicate emotions, ideas, feelings (e.g., Hart- Graces, Mother &amp; Child; Louisville- Yandell works, Water Tower, many others).  <u>Narrative-</u> artworks that tell stories, describe and illustrate experiences, or communicate ideas or information, art to document important or historical events (e.g., Hart and Louisville- Statesmen &amp; Historical figures).  <u>Functional-</u> artistic objects used in everyday life (e.g., Louisville downtown bike racks).  <u>Persuasive-</u> artworks that promote ideas, philosophies, or products (e.g. - advertising: Louisville Slugger Bat, Colgate Clock, marketing/fundraising: Gallopalooza horses).</p>	<p><b>AH-07-3.4.1</b>  <b>Students will identify or explain how public art fulfills a variety of purposes.</b></p> <p><b>Purposes of Art: (different roles of art)</b>  <u>Ceremonial-</u> ritual, celebration, artworks created to support worship ceremonies (e.g. Hart and Louisville- memorials and cathedrals).  <u>Artistic expression-</u> artwork to express or communicate emotions, ideas, feelings (e.g., Hart- Graces, Mother &amp; Child; Louisville- Yandell works, Water Tower, many others).  <u>Narrative-</u> artworks that tell stories, describe and illustrate experiences, or communicate ideas or information, art to document important or historical events (e.g., Hart and Louisville- Statesmen &amp; Historical figures).  <u>Functional-</u> artistic objects used in everyday life (e.g., Louisville downtown bike racks).  <u>Persuasive-</u> artworks that promote ideas, philosophies, or products (e.g. - advertising: Louisville Slugger Bat, Colgate Clock, marketing/fundraising: Gallopalooza horses).</p>	<p><b>AH-08-3.4.1</b>  <b>Students will identify or explain how public art fulfills a variety of purposes.</b></p> <p><b>Purposes of Art: (different roles of art)</b>  <u>Ceremonial-</u> ritual, celebration, artworks created to support worship ceremonies (e.g. Hart and Louisville- memorials and cathedrals).  <u>Artistic expression-</u> artwork to express or communicate emotions, ideas, feelings (e.g., Hart- Graces, Mother &amp; Child; Louisville- Yandell works, Water Tower, many others).  <u>Narrative-</u> artworks that tell stories, describe and illustrate experiences, or communicate ideas or information, art to document important or historical events (e.g., Hart and Louisville- Statesmen &amp; Historical figures).  <u>Functional-</u> artistic objects used in everyday life (e.g., Louisville downtown bike racks).  <u>Persuasive-</u> artworks that promote ideas, philosophies, or products (e.g. - advertising: Louisville Slugger Bat, Colgate Clock, marketing/fundraising: Gallopalooza horses).</p>

## CORE CONTENT FOR ARTS & HUMANITIES

<p><b>EXAMPLES CAN BE DERIVED FROM PERIODS STRESSED AT THIS GRADE LEVEL AS WELL:</b></p> <ul style="list-style-type: none"> <li>• LATIN AMERICAN (mural art)</li> <li>• ASIAN (China, evolution of ceramics)</li> </ul>	<p><b>EXAMPLES CAN BE DERIVED FROM PERIODS STRESSED AT THIS GRADE LEVEL AS WELL:</b></p> <ul style="list-style-type: none"> <li>• <b>CLASSICAL GREECE-</b> Presents the universal ideal of beauty through logic, order, reason and moderation, Western civilization was heavily influenced by Classical Greece. (e.g., Hart inspired by the classics).</li> <li>• <b>'ANCIENT ROME-</b> continuation of Classical Greek traditions in the arts, advancement of architecture (Pantheon, Coliseum, ancient Roman sculptures found at Humana Bldg).</li> <li>• <b>ANCIENT EGYPT-</b> monumental structures (e.g., pyramids, sphinx,) visual arts reflect religion and belief in immortality.</li> <li>• <b>MEDIEVAL-</b> appeals to emotions and stresses the importance of religion (Gothic architecture style found at National Cathedral in Washington, D.C. site of Hart's ExNihilo).</li> </ul>	<p><b>EXAMPLES CAN BE DERIVED FROM PERIODS STRESSED AT THIS GRADE LEVEL AS WELL:</b></p> <ul style="list-style-type: none"> <li>• <b>EARLY AMERICAN THROUGH CIVIL WAR-</b> (e.g., Louisville's Castleman statue and the Confederate memorial at 3<sup>rd</sup> St.)</li> <li>• <b>EUROPEAN NEO-CLASSICAL INFLUENCES</b> (e.g., Hart's work at the National Cathedral)</li> <li>• <b>PAINTING-</b> inspired by the natural beauty of America, painters began to develop their own unique styles rather than borrow from Europe (e.g., Hart's depiction of figures).</li> <li>• The development of photography as a new medium that affected visual art (e.g., Matthew Brady's soldiers, the sculpture by Louisville's Ed Hamilton at Amistad).</li> </ul>
<p><b>Postscript:</b></p> <p>Frederick Hart believed in the heroic possibilities of man. As the modern art scene of the mid-late 20<sup>th</sup> Century moved away from figurative representation and toward the abstract, Hart felt a great deal of the human experience was lost. As the most prominent figurative sculptor of the late 20<sup>th</sup> Century, Hart sought to recapture and share with the public an enthusiasm for truth, beauty and goodness through his realist sculpture. To quote Hart, "art must be enriching, ennobling and a vital partner in the public pursuit of civilization. It should be a majestic presence in everyday life just as it was in the past." Teaching students to become aware of and to appreciate the public art in their community and the works of Frederick Hart can satisfy Kentucky Academic Expectations for Arts and Humanities goals 1.13, 2.24 and 2.26.</p>		



**Public Art in Louisville**

In conjunction with  
**Frederick Hart: *Giving Form to Spirit***  
Educational Opportunity  
University of Louisville  
Louisville, Kentucky  
September-November 2007

**06 to 08 Education Project**

Frederick Hart  
1943-1999  
American Sculptor

## FOR MORE INFORMATION:

### Frederick Hart, American Sculptor 1943-1999

See companion Leader's guide, chronology page and biography materials.

Visit [www.frederickhart.com/](http://www.frederickhart.com/) for his official website.

### Public Art in Louisville

Visit [www.louisvilleky.gov/MetroParks/publicart/](http://www.louisvilleky.gov/MetroParks/publicart/) for more information on an inventory of the City's public art collection and to learn about supporting and advancing public art in our community.

#### PICTURE REFERENCE:

Hart picture reference- [http://content.answers.com/main/content/wp/en/e/e1/Frederick\\_Hart.jpg](http://content.answers.com/main/content/wp/en/e/e1/Frederick_Hart.jpg)  
All ClipArt Images from Microsoft Office PowerPoint ClipArt Library, not referenced hereafter

## Lots of different kinds of artists:



### INTRODUCTION:

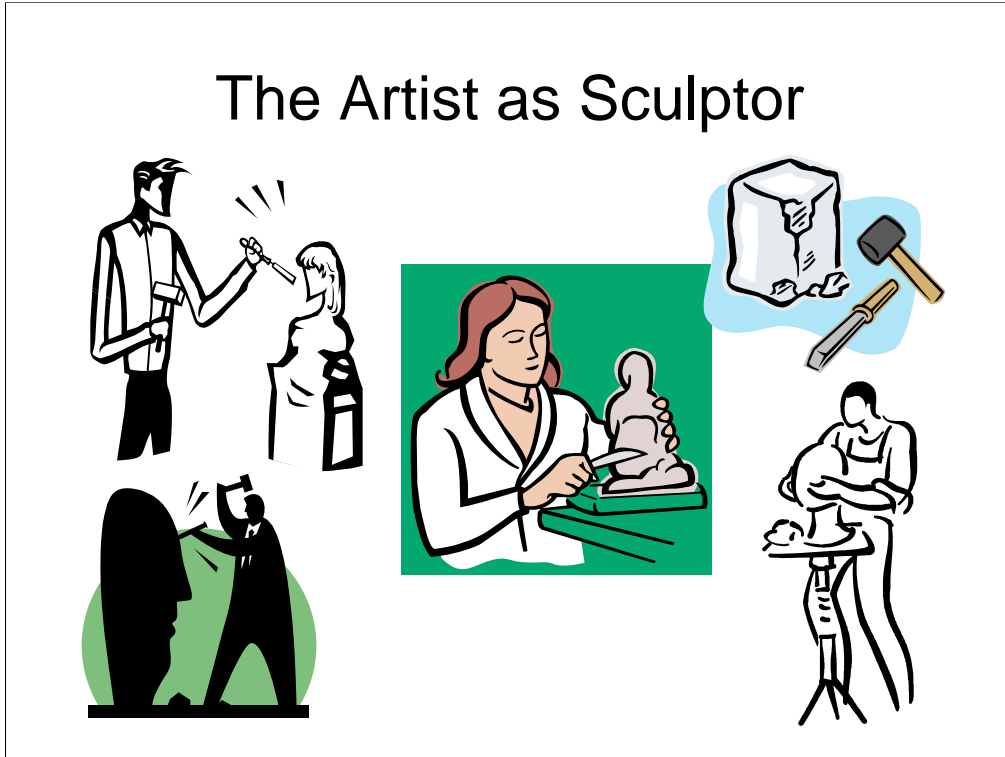
NOTE-This slide has a built-in effect to allow each icon to pop-up one at a time with one click of the keyboard down arrow, a mouse-click or one roll of the mouse scroll.

#### Ask the following question:

Name the different types of artists that appear on the slide and the tools they use.  
(i.e.- Painter- uses a brush, easel and paint)

- 1- Puppet Artist
- 2- Glass Blower
- 3- Mandala- Buddhist monk- sand prayer
- 4- Mosaic Maker
- 5- Computer-generated art
- 6- Tattoo artist (take home question, is this art?)

# The Artist as Sculptor



## ARTIST AS SCULPTOR:

**Statement-** The type of artist we will discuss today is the Sculptor. The sculptor uses clay, stone and even acrylic to create art called sculptures.

NOTE- if presentation is accompanied by 'Hart on Wheels', show the clay from Hart's studio and the sample art pieces while introducing sculpture in general and Hart specifically.

### Ask the following question:

Raise your hand if you think you would like to be a sculptor?

**Statement-** Let me introduce you to a very interesting person who loved being a sculptor.

# Frederick Hart

American Sculptor



## FREDERICK HART, AMERICAN SCULPTOR:

**Statement-** The man standing before you in this picture is Frederick Hart. He is in front of his sculpture, Ex Nihilo. Ex Nihilo is carved swirls of limestone. It took him ten years to create. You will find it today at the west facade tympana of the National Cathedral in Washington, DC. He spent his entire life creating sculptures.

**Ask the following rhetorical question:**

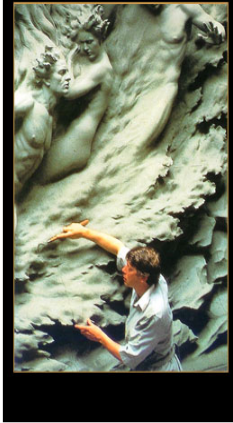
What do think made him want to create sculpture?

### PICTURE REFERENCE:

Hart picture reference-[www.evangelicaloutpost.com/images/ex%20nihilo...](http://www.evangelicaloutpost.com/images/ex%20nihilo...)

# Hart Art

Hart working in clay



Bronze sculpture

Patented-Lucite sculpture



## HART ART:

**Statement-** Hart worked in three different types of materials:

- 1- Clay, see actual sample from Hart's workshop
- 2- Bronze, a metal
- 3- Lucite sculpture, his own invention!

He believed the following:

- Art should be seen and enjoyed by everyone
- Art should be beautiful
- Art should be made to last
- Art should show the best we have to offer

**Statement-** Let's investigate some more...

### PICTURE REFERENCE (LtoR):

- 1- Hart picture reference- [www.thewestendgallery.com/.../hart\\_entro.jpg](http://www.thewestendgallery.com/.../hart_entro.jpg)
- 2- Bronze picture reference- [www.lanouefineart.com/images/artistwork/hart\\_](http://www.lanouefineart.com/images/artistwork/hart_)
- 3- Acrylic picture reference- [www.aejv.com/.../federickhartappassionata.jpg](http://www.aejv.com/.../federickhartappassionata.jpg)

# What is Public Art?



Statue of Liberty



President George Washington



Mickey Mouse

## WHAT IS PUBLIC ART?:

**Statement-** Public art is placed so everyone can enjoy it. Here are a few examples you may recognize.

### Ask the following question:

Do you recognize these statues?

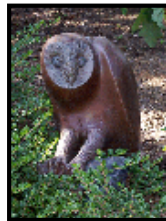
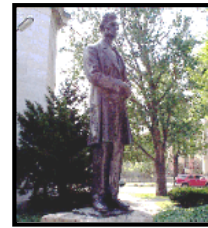
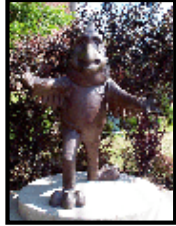
- 1- Statue of Liberty
- 2- George Washington
- 3- Mickey Mouse

**Statement-** Good. These sculptures have become part of our lives.

#### PICTURE REFERENCE (LtoR):

- 1- Statue of Liberty picture reference- [architecture.about.com](http://architecture.about.com)
- 2- Geo. Washington picture reference- [zenosfrudakis.com/.../GeorgeWashington.jpg](http://zenosfrudakis.com/.../GeorgeWashington.jpg)
- 3- Mickey Mouse picture reference- <http://uk.gizmodo.com/gold%20mickey%20mouse.jpg>

# Public Art in Louisville



## PUBLIC ART IN LOUISVILLE:

**Statement-** Our own city has lots of Public art for us to enjoy.

NOTE-This slide has a built-in effect to allow each icon to pop-up one at a time with one click of the keyboard down arrow, a mouse-click or one roll of the mouse scroll.

### Ask the following question:

How many of these images look familiar to you?

From top, going clock-wise:

- 1-Gallopaloosa Horse (all around town)
- 2- Abraham Lincoln (Main Public Library)
- 3- Owl Sculpture (Louisville Zoo)
- 4- Faribolus & Perceval (Kentucky Center for the Arts)
- 5- Cardinal Bird (UofL Activities Center)

#### PICTURE REFERENCE (clockwise from top):

- 1-Gallopaloosa Horse picture reference -[www.featoflouisville.org](http://www.featoflouisville.org)
- 2- Abraham Lincoln picture reference- City of Louisville, Public Art Database
- 3- Owl Sculpture picture reference- City of Louisville, Public Art Database
- 4- Faribolus & Perceval picture reference- [www.upload.wikimedia.org/.../260px-KCA\\_entrance.jpg](http://www.upload.wikimedia.org/.../260px-KCA_entrance.jpg)
- 5- Cardinal Bird picture reference- City of Louisville, Public Art Database

## Introduce game

First: **I show you the categories**

Second: **I show you the art**

Third: **You figure out where  
these game pieces belong**

### **Introduce game:**

#### NOTES-

- It is suggested that you have all of the game pieces in order before you begin.
- Use the kit within the “Hart on Wheels” or use the slides at the end of this presentation (slides 24-36). Print the slides, cut out the pictures and tape them onto the chalkboard as you go. The game board will be an area divided into four columns (one for ea. Purpose) with room below to place the art examples.

#### **TO DO-**

- Introduce the “game board” to the class and begin to label sections with each Purpose (slide 25) when introduced on the next slide.
- As you begin the detailed slides of each Purpose, add the picture example (slide 26) under each Purpose to help them remember. The pictures correspond with the art used on the detail slide for each new Purpose introduced.

**Statement-** This is a memory game and you must remember which Purpose the art was created for in order to place the twelve game pieces (slides 28-31) under the appropriate categories.

### **Ask the following question:**

Do you think you have a good memory?

## Purposes for creating art:

- **Ceremonial**
- *Artistic*
- Narrative
- **Functional**

### PURPOSES FOR CREATING ART:

NOTE- Titles have fly-ins built in so only click the mouse once and the remaining three titles will follow.

**Statement-** There are four main reasons for creating art:

- 1- Ceremonial
- 2- Artistic
- 3- Narrative
- 4- Functional

Let's have a look at them one at a time...

# Ceremonial Art



**Representative**  
Ceremonial art is created for rituals and celebrations. And also to support worship ceremonies .

## CEREMONIAL ART:

**Statement-** Ceremonial art is created for rituals and celebrations. Also to support worship ceremonies (like the picture of the monk with the sand art earlier).

Here is a Mexican mural of an ancient ceremony created during Mesoamerican times almost 2000 years ago.

### Ask the following question:

Have you ever been part of a ceremony or celebration, like a wedding or a parade?

#### PICTURE REFERENCE:

Mesoamerican Mural painting picture reference- [www.ancientmexico.com/images/map\\_bonam-3.gif](http://www.ancientmexico.com/images/map_bonam-3.gif)

# Ceremonial Art

## Celebrations



## Rituals



## CEREMONIAL ART:

*REMINDER Statement- Ceremonial art is created for rituals and celebrations. Also to support worship ceremonies.*

### Statement, 2 options-

Frederick Hart expressed his love through his art. He made this creation to decorate an entire portion of wall at the National Cathedral in Washington, D.C.. He created this and many beautiful artworks which are used in ceremonies today and will be used well into the future.

### OR

Frederick Hart had a deep belief in his faith. By creating these ceremonial works of art...the Cross (r) used in churches today- the original given to the Pope; and Ex Nihilo (l), found in the National Cathedral in Washington, D.C.. He was able to express his faith and share his beliefs and feelings with others.

### Ask the following question:

Would you like to see some examples from our own city?

#### PICTURE REFERENCE (LtoR):

Ex Nihilo picture reference- [www.goodart.org/fhexnce.jpg](http://www.goodart.org/fhexnce.jpg)

Millennium Cross picture reference- <http://www.asopa.com/publications/1999summer/hart-cross.jpg>

# Ceremonial Art

## Memorials in Louisville

(Left to Right)



- WW memorial
- Tornado memorial
- Fireman's memorial
- Policeman's memorial

### CEREMONIAL ART:

*REMINDER Statement- Ceremonial art is created for rituals and celebrations. Also to support worship ceremonies.*

NOTE- This slide has a built-in effect to allow each icon to pop-up one at a time with one click of the keyboard down arrow, a mouse-click or one roll of the mouse scroll.

**Statement-** Here are some examples from here in Louisville:

- 1.WWII Memorial- to honor those who died in wartime.
- 2.Tornado Memorial- to honor our city's survival and those lost.
- 3.Policeman's Memorial- includes perpetual flame.
- 4.Fireman's Memorial- includes figure sculptures.

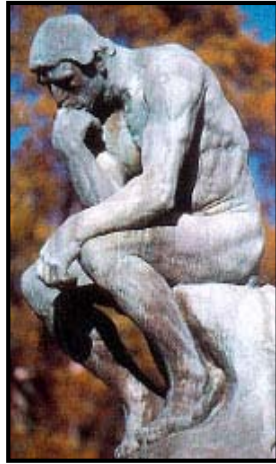
### Ask the following question:

If you made a memorial, who would you honor?

#### PICTURE REFERENCE (clockwise from top):

- 1- World War Memorial picture reference –City of Louisville, Public Art Database
- 2- Tornado Memorial picture reference- City of Louisville, Public Art Database
- 3- Policeman's Memorial picture reference- City of Louisville, Public Art Database
- 4- Fireman's Memorial picture reference- City of Louisville, Public Art Database

# *Artistic Expression*



*Beautiful*  
*Some artwork is*  
*created to express or*  
*communication*  
*emotions, ideas*  
*and/or feelings.*

## **ARTISTIC EXPRESSION:**

**Statement-** Some artwork is created to express or communication emotions, ideas and/or feelings.

Here is a sculpture called The Thinker by a sculptor named August Rodin. He sits outside at the University of Louisville and inspires us all to think deep thoughts.

### **Ask the following question:**

Do you sitting and thinking like this might help you do your homework better?

#### **PICTURE REFERENCE:**

Thinker picture reference- <http://www.give.louisville.edu/localresources/images/thinker-fall.jpg>

# Artistic Expression

## Hart's Beautiful



### ARTISTIC EXPRESSION:

*REMINDER Statement- Some artwork is created to express or communication emotions, ideas and/or feelings.*

**Statement-** Frederick Hart felt art should be beautiful and inspire us to better thoughts and to do better things with our lives.

Here we have (L) Mother and Child done in Lucite. If a “Hart on Wheels” presentation, demonstrate the beauty of a Hart Lucite by turning on the light box underneath the sculpture in the Hart case.

In the center, Daughters of Odessa, done in clay, they are four sisters, seen at various angles, all beautiful. On the (r) you will see the same sculpture done in bronze, a metal.

### Ask the following question:

Do you think they are beautiful?

#### PICTURE REFERENCE (LtoR):

1-Mother & Child picture reference- [www.artnet.com/.../424158133/220676t.jpg](http://www.artnet.com/.../424158133/220676t.jpg)

2-Daughters of Odessa, Maquette, picture reference- [www.hansongallerycarmel.com/.../thumbnail\\_jpg](http://www.hansongallerycarmel.com/.../thumbnail_jpg)

3- Daughters of Odessa, Bronze, picture reference- [www.collectionprivée.com](http://www.collectionprivée.com)

# *Artistic Expression*

## *Beautiful in Louisville*



### **ARTISTIC EXPRESSION:**

*REMINDER Statement- Some artwork is created to express or communication emotions, ideas and/or feelings.*

**Statement-**Enid Yandall, from Louisville, contributed the beautiful Pan sculpture in Hogan's Fountain at Cherokee Park as well as the Daniel Boone sculpture in Cherokee Park.

**Make the following request:** Raise your hand if you know who Daniel Boone is.

#### **PICTURE REFERENCE (LtoR):**

- 1- Fountain of the Great Lakes, Art Institute, [www.filsonhistorical.org](http://www.filsonhistorical.org)
- 2- Pan picture reference- Pan, Hogan's Fountain, Cherokee Park, [wikipedia.org](http://wikipedia.org)
- 3- Daniel Boone picture reference- Daniel Boone, Cherokee Park, [www.gutenberg.org](http://www.gutenberg.org)

# Artistic Expression

## Louisville's Modern



## ARTISTIC EXPRESSION:

*REMINDER Statement- Some artwork is created to express or communication emotions, ideas and/or feelings.*

**Statement-** Modern artistic expression uses shapes more than human faces and figures.

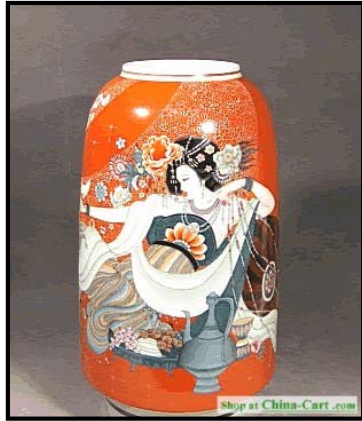
### Ask the following question:

Is it easy to tell the difference between this kind of art and what we saw before?

#### PICTURE REFERENCE (Clockwise from Top):

- 1- Ad Astra picture reference- City of Louisville, Public Art Database
- 2- Personage picture reference- City of Louisville, Public Art Database
- 3- The Colored Gates of Louisville picture reference- City of Louisville, Public Art Database
- 4- Cube Construction #5, Exploded Cube picture reference- City of Louisville, Public Art Database
- 5- Expanding Hemispheres picture reference- City of Louisville, Public Art Database
- 6- Turrets: The Highlands Island picture reference- City of Louisville, Public Art Database
- 7- Big Red picture reference- City of Louisville, Public Art Database
- 8- Bon Air Library Fountain (3 pieces) picture reference- City of Louisville, Public Art Database
- 9- Night Wave: Moon picture reference- City of Louisville, Public Art Database (Center picture)

# Narrative Art



## Historical and Memorial

Narrative artworks tell a story, describe and illustrate an experience, or communicate ideas or information. It is art that documents important or historic events.

## NARRATIVE ART:

**Statement-** Narrative artworks tell a story, describe and illustrate an experience, or communicate ideas or information. It is art that documents important or historic events.

Here is a Chinese Vase which tells a story if you look around the vase the figures take flight.

### Ask the following question:

Would you like to tell a story with pictures instead of words?

#### PICTURE REFERENCE:

Chinese Vase picture reference- [www.china-cart.com/.../20052/2005225221055.jpg](http://www.china-cart.com/.../20052/2005225221055.jpg)

# Narrative Art



Hart's Memorial



## NARRATIVE ART:

*REMINDER Statement- Narrative artworks tell a story, describe and illustrate an experience, or communicate ideas or information. It is art that documents important or historic events.*

**Statement-** Frederick Hart created this war memorial in Washington, D.C. to honor those who fought in the Vietnam war. Some people mistake these statues for real people because they seem so life-like. Everyone who sees them thinks of a story to explain what they must be thinking.

### Ask the following question-

Do you like a statue that tells a story?

#### PICTURE REFERENCE (LtoR):

- 1- Larger Vietnam Memorial picture reference- [www.visitingdc.com/images/vietnam\\_memorial\\_ph...](http://www.visitingdc.com/images/vietnam_memorial_ph...)
- 2- Smaller Vietnam Memorial picture reference- [content.answers.com/main/content/wp/en-common..](http://content.answers.com/main/content/wp/en-common..)

# Narrative Art

Louisville's Historical



## NARRATIVE ART:

*REMINDER Statement- Narrative artworks tell a story, describe and illustrate an experience, or communicate ideas or information. It is art that documents important or historic events.*

**Statement-** (l) This sculpture is of a life-size frontier family titled “Migration to the West”. It tells the story of families that left from this area to go out West more than two hundred years ago. It was created by Louisville artist, Ed Hamilton.

(r) This is Thomas Jefferson, 3<sup>rd</sup> President of the United States, and the man for which our country is named. He has stood outside the Jefferson County Courthouse steps since 1900.

**Make the following rhetorical statement-** What do you think these men are thinking? What stories do you think they might tell?

### PICTURE REFERENCE (LtoR):

- 1 & 2- Migration to the West picture reference- [http://edhamiltonworks.com/migration\\_to\\_the\\_west.htm](http://edhamiltonworks.com/migration_to_the_west.htm)
- 3- Thomas Jefferson picture reference –City of Louisville, Public Art Database

# Functional Art

## Useful

Functional arts are objects used in everyday life.



## FUNCTIONAL ART:

**Statement-** Functional arts are objects used in everyday life that have artistic beauty.

This category is a lot of fun because you can be very creative with your definitions.

### Ask the following question-

Does anyone's parent keep something from a long time ago like a lunchbox or a doll, toy or game? Maybe they keep it on a shelf or display it like an artwork?

#### PICTURE REFERENCE (LtoR):

- 1-Fish Vase, Chinese Ceramic picture reference- [www.silvercollection.it/pesci.jpg](http://www.silvercollection.it/pesci.jpg)
- 2- Tree Lamp picture reference- [www.truelightco.com/images/tree1.jpg](http://www.truelightco.com/images/tree1.jpg)

# Functional Art



Broadway @ St. Francis High School

Useful Art or  
Art that is useful?



Preston St & Witherspoon

## FUNCTIONAL ART:

*REMINDER Statement- Functional arts are objects used in everyday life.*

### Ask the following question:

Who can guess what these are?

**Statement-** Functional Art takes something that we need or want to use everyday and adds artistic beauty to make them more interesting or likeable.

These are bike racks! The city of Louisville installed these bike racks downtown, Everybody talks about them. They say “meet me by the blue men”. Art can be fun and functional.

### Ask the following question:

Do you think you could create a functional work of art, something useful and beautiful?

#### PICTURE REFERENCE (LtoR):

- 1- Bike Rack- People- picture reference- [www.courier-journal.com/localnews/2004/12/28ky/B1-racks1228-5288.html](http://www.courier-journal.com/localnews/2004/12/28ky/B1-racks1228-5288.html)
- 2- Bike Rack- Kaleidoscope- picture reference- [www.courier-journal.com/localnews/2004/12/28ky/B1-racks1228-5288.html](http://www.courier-journal.com/localnews/2004/12/28ky/B1-racks1228-5288.html)

**Let's Play the Game!**

**LET'S PLAY THE GAME:**

We've set up our board so let's get out those game pieces and get started.

**Additional  
Activities are  
available**

**ADDITIONAL ACTIVITIES:**

Consult additional materials for more activities related to this presentation and others regarding Frederick Hart: *Giving Form to Spirit*.

## TIPS AND INSTRUCTIONS

to view notes: View/Notes Page/

to print notes page: File/Print/Print What:  
dropdown, select Notes Page

### **TIPS-**

- If you are running long on the presentation, skip the questions at the end of the notes section and move to the next slide.
- Mix up game pieces (12 total), show pieces and ask students to identify.
- Set time limits. Encourage rapid fire answers.
- Show awards, either select one for first place and one for second, or print both and let them decide which they would rather receive.

### **INSTRUCTIONS-**

- Follow initial set-up instructions slide 8.
- See slides 25-36 for game pieces and instructions.
- Set time limit and consider dividing group into teams with one person to answer the group decision.
- Present awards to everyone once all pictures are placed.

Titles needed to create game

**Ceremonial**

*Artistic*

Narrative

**Functional**

**INSTRUCTIONS:**

**Print and use these titles to designate each of the four purposes of art:**

- 1- Ceremonial
- 2- Functional
- 3- Narrative
- 4- Artistic

## Example pictures for Purpose categories



[www.ancientmexico.com/images/map\\_bonam-3.gif](http://www.ancientmexico.com/images/map_bonam-3.gif)



[simages/thinker-1a1.jpg](http://simages/thinker-1a1.jpg)



[www.china-art.com/.../200952/2009522221055.jpg](http://www.china-art.com/.../200952/2009522221055.jpg)



[www.silvercollection.it/pesci.jpg](http://www.silvercollection.it/pesci.jpg)

### INSTRUCTIONS:

**Print and use these as examples for each of the four purposes of art:**

- 1-Mesoamerican Mural, example of Ceremonial Art
- 2-The Thinker, example of artistic expression
- 3-Chinese Vase, example of Narrative Art
- 4-Asian Tri-Fish Vase, example of Functional Art

As you introduce each purpose during your presentation, use this picture as your example (ex- The Mural should be placed under the title "Ceremonial Art" when you get to slide 10 in the presentation).

## Additional pictures to post



[http://content.answers.com/main/content/wp/en/e1/Frederick\\_Hart.jpg](http://content.answers.com/main/content/wp/en/e1/Frederick_Hart.jpg)



Microsoft PowerPoint Clip Art

### **INSTRUCTIONS:**

**Print and use these as additional pictures to post. These can serve as backdrop to reinforce presentation.**

### **Alternate game:**

Name which game pieces belong under the Frederick Hart category and which under the City of Louisville category?

## Game pieces- Ceremonial



Fireman's Memorial picture reference- City of Louisville, Public Art Database



City of Louisville, Public Art Database



Millennium Cross picture reference-  
<http://www.asopa.com/publications/1999summer/hart-cross.jpg>

### INSTRUCTIONS:

**Print and use these pictures from the presentation. Determine which of the four purposes of art they belong.**

- Fireman's Memorial, Barney Bright sculptor, Jefferson Square - Louisville, KY
- Tornado Memorial, unknown sculptor, 8<sup>th</sup> & Main Sts.- Louisville, KY
- Millennium Cross, Frederick Hart sculptor

## Game pieces- Artistic



[www.hansongallerycarmel.com/.../thumbnail\\_jpg](http://www.hansongallerycarmel.com/.../thumbnail_jpg)



Pan, Hogan's Fountain, Cherokee Park, wikipedia.org



City of Louisville, Public Art Database

### INSTRUCTIONS:

**Print and use these pictures from the presentation. Determine which of the four purposes of art they belong.**

- Daughters of Odessa, Frederick Hart sculptor
- Big Red, Tom Lear sculptor, University of Louisville- Louisville, KY
- Pan, Enid Yandall sculptor, Cherokee Park, Hogan's Fountain- Louisville, KY

## Game Pieces- Narrative



[www.visitingdc.com/images/vietnam\\_memorial\\_ph...](http://www.visitingdc.com/images/vietnam_memorial_ph...)



City of Louisville, Public Art Database



[http://edhamiltonworks.com/migration\\_to\\_the\\_west.htm](http://edhamiltonworks.com/migration_to_the_west.htm)

### INSTRUCTIONS:

**Print and use these pictures from the presentation. Determine which of the four purposes of art they belong.**

- Vietnam War Memorial, Frederick Hart sculptor- Washington, D.C.
- Thomas Jefferson, Moses Ezekiel sculptor, Jefferson County Courthouse- Louisville, KY
- Migration to the West, Ed Hamilton sculptor, Frazier Arms Museum- Louisville, KY

## Game pieces- Functional



[www.courier-journal.com/localnews/2004/12/28/ky/B1-racks1228-5288.html](http://www.courier-journal.com/localnews/2004/12/28/ky/B1-racks1228-5288.html)



[www.courier-journal.com/localnews/2004/12/28/ky/B1-racks1228-5288.html](http://www.courier-journal.com/localnews/2004/12/28/ky/B1-racks1228-5288.html)



[www.truelightco.com/images/tree1.jpg](http://www.truelightco.com/images/tree1.jpg)

### INSTRUCTIONS:

**Print and use these pictures from the presentation. Determine which of the four purposes of art they belong.**

- Blue Man Bike Rack, Samantha Griffith sculptor, Broadway- Louisville, KY
- Kaleidoscope Bike Rack, Laura Mentor sculptor, Preston & Witherspoon Sts.- Louisville, KY
- Tree of Light Lamp, David Robertson artist

## Game pieces- Bonus Questions



[www.architecture.about.com](http://www.architecture.about.com)



[zenosfrudakis.com/.../GeorgeWashington.jpg](http://zenosfrudakis.com/.../GeorgeWashington.jpg)



<http://uk.gizmodo.com/gold%20mickey%20mouse.jpg>



<http://www.give.louisville.edu/localresources/images/thinker-fall.jpg>

### INSTRUCTIONS:

**Statement-** Here's the big challenge question. Now that we've learned something about public art. Let's get to the question.

#### Ask the following questions:

Warm-up Question, who can name these statues?

- 1- Statue of Liberty
- 2- George Washington
- 3- Mickey Mouse

Final Challenge Question, who can tell me what kind of public art they are? Hint- look at these categories (point to game board) and remember what we've learned...

- 1- Statue of Liberty- Ceremonial
- 2- George Washington- Narrative
- 3- Mickey Mouse- What do you think? Ceremonial, celebrates a love for Mickey; narrative, reminds you of Mickey stories; artistic, he's all gold and pretty; functional, you could hang a hat on it... Place Mickey in the Functional category so you can wrap up with...

And to round it out and have a final piece of art for each category... here's UofL's Thinker to fill the artistic category.

#### PICTURE REFERENCE (LtoR):

- 1- Statue of Liberty picture reference- [architecture.about.com](http://www.architecture.about.com)
- 2- Geo. Washington picture reference- [zenosfrudakis.com/.../GeorgeWashington.jpg](http://zenosfrudakis.com/.../GeorgeWashington.jpg)
- 3- Mickey Mouse picture reference- <http://uk.gizmodo.com/gold%20mickey%20mouse.jpg>
- 4- Thinker, Rodin, <http://www.give.louisville.edu/localresources/images/thinker-fall.jpg>

## Award Images



### **INSTRUCTIONS:**

**Print and use these as handout prizes at the end of the presentation.**

## Award Images



### **INSTRUCTIONS:**

**Print and use these as handout prizes at the end of the presentation.**

## Award Images



### **INSTRUCTIONS:**

**Print and use these as handout prizes at the end of the presentation.**

## Award Images

