

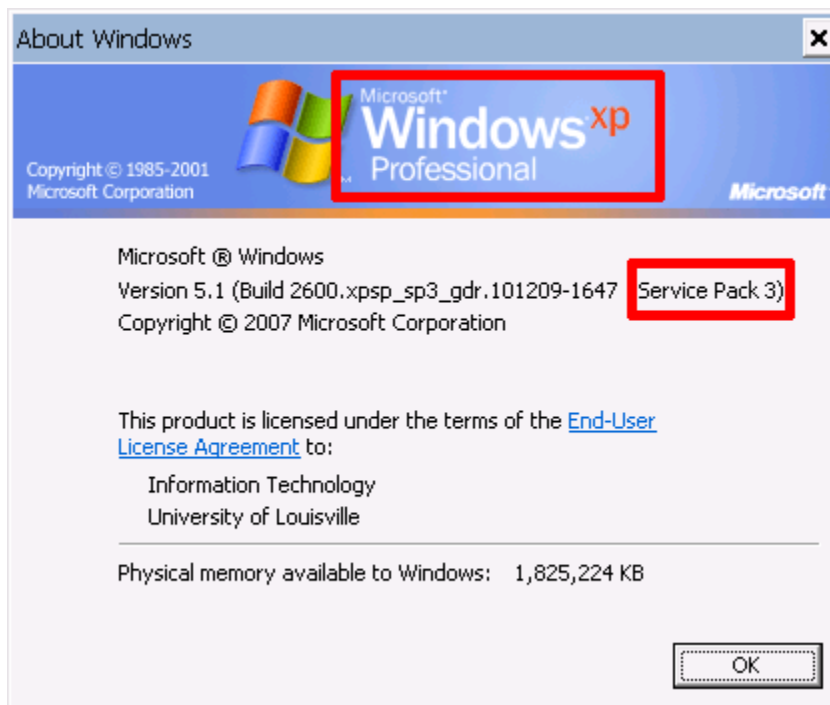
SCCM Client Checklist for Windows XP

1. The client workstation must have a supported [operating system](#).

Supported operating systems include Windows XP Service Pack 2 or higher.

To view information about the operating system version:

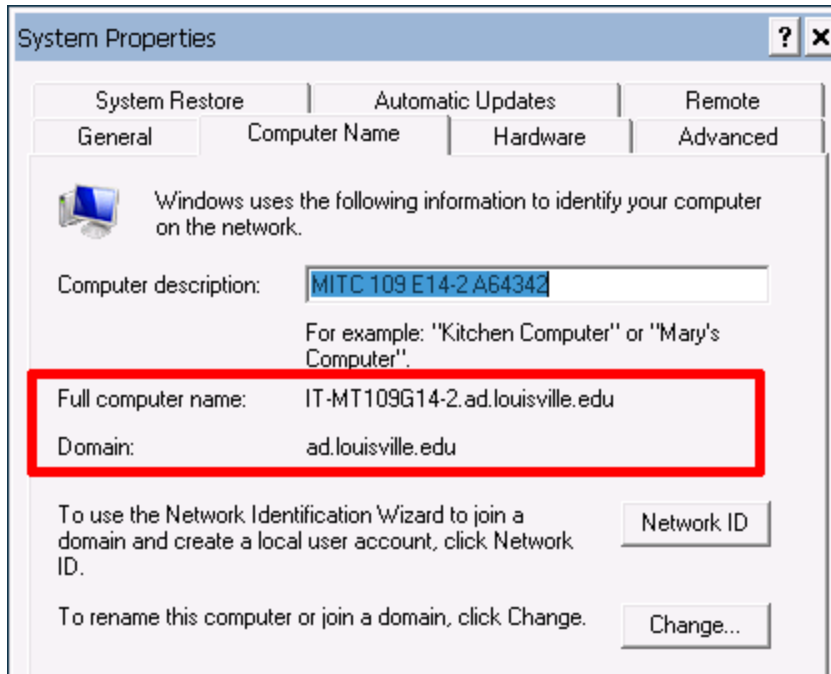
- a. Open a [Command Shell](#)
- b. Enter **winver** at the [command prompt](#)



2. The client workstation must be joined to the enterprise Active Directory “ad.louisville.edu”.

To view information about the domain:

- a. Click on **Start**
- b. Right-click on **My Computer**
- c. Click on **Properties**
- d. Click on the **Computer Name** tab



3. The client workstation account in Active Directory must be in a departmental OU. Computers in the default "Computers" OU are not targeted for the client push.

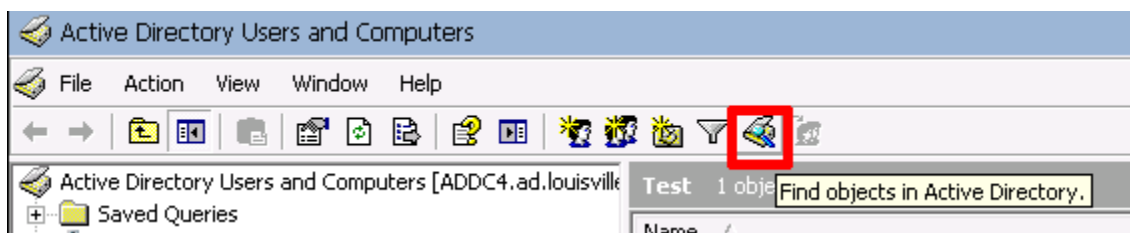
Review the [recommended workstation naming convention](#).

Install the Server 2003 Administration Tools Pack
(<https://louisville.edu/it/accounts/active-directory/activedirectory.html#how-do-i-manage>)

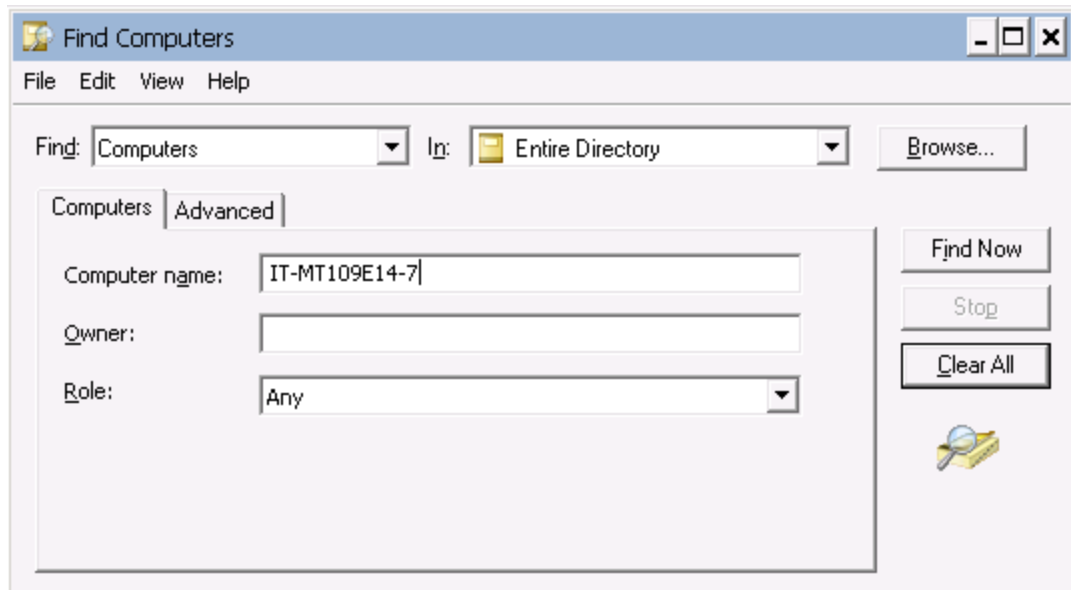
See [Appendix 2 : Enable ADUC Advanced Features](#)

Use the **Active Directory Users and Computers** (ADUC) administrative [tool](#) to search for the computer name and view the Object tab.

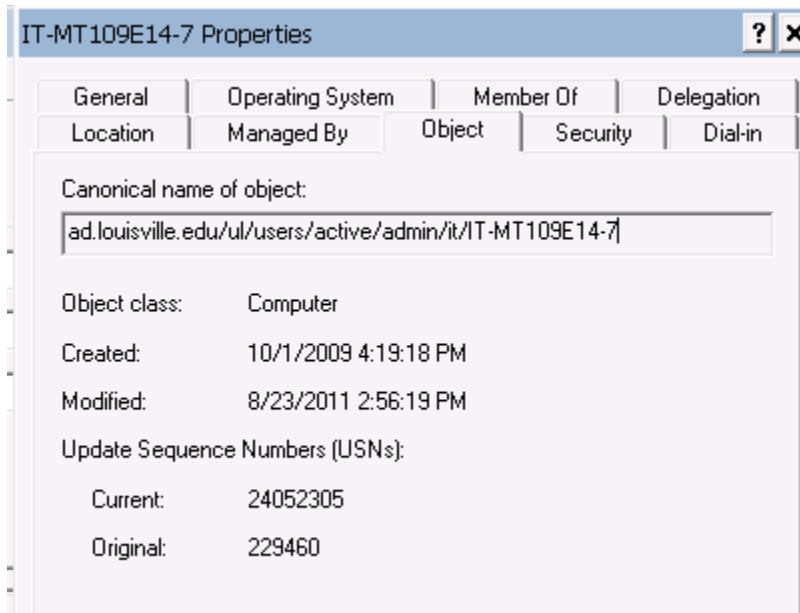
- a. Click on **Start**
- b. Click on **Control Panel**
- c. Double-click on **Administrative Tools**
- d. Double-click on **Active Directory Users and Computer**
- e. Click on the **Find** icon in the [toolbar](#)



- f. Select **Computers** in the “Find” [drop-down list](#).
- g. Select **Entire Directory** in the “In” [drop-down list](#).
- h. Enter the name of the computer in the “Computer Name” [text box](#).



- i. Click the **Find Now** button.
- j. Right-click on the computer in the results pane and select **Properties**.
- k. Click on the **Object** tab.

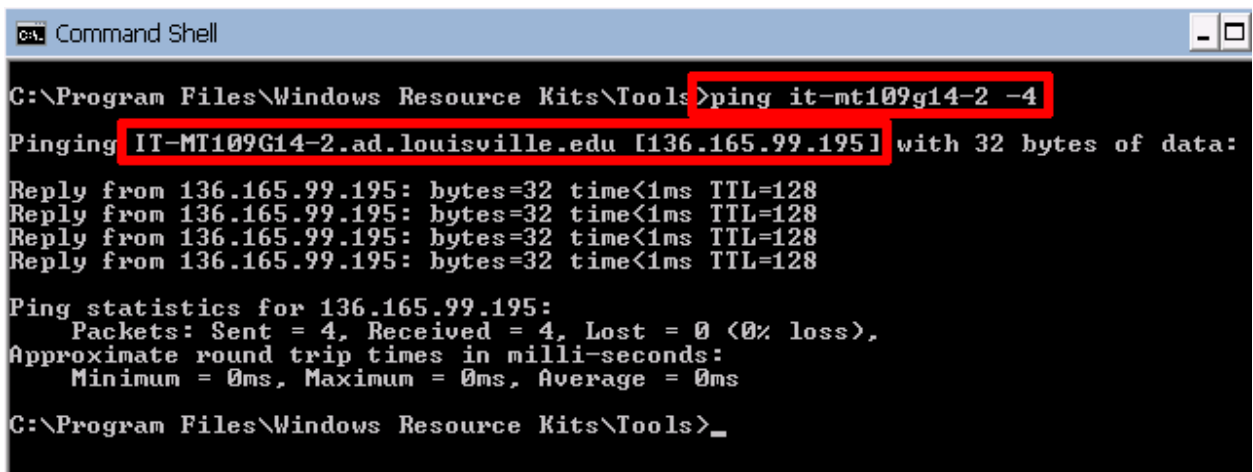


The **Canonical name of object** should:

- a. Begin with "ad.louisville.edu/ul/users/active/"
- b. End with the name of the computer.
- c. Contain your departmental path in the middle. In this example, the departmental path is "/admin/it", which is correct.

4. The client workstation must successfully register the fully qualified domain name (FQDN) with the Active Directory DNS servers.

From a [command shell](#), enter: ping *computername* -4



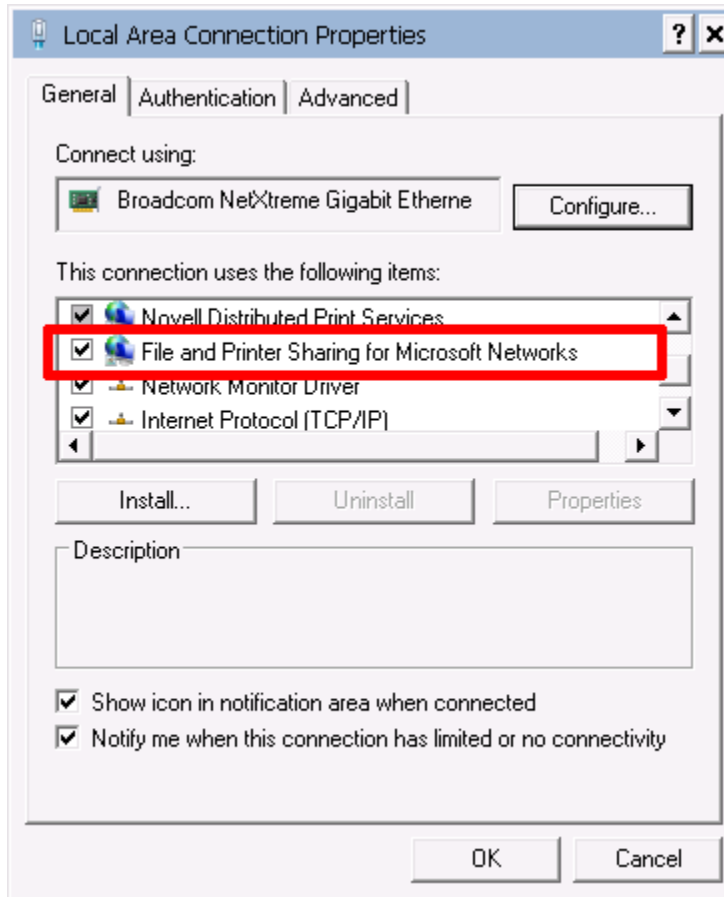
```
C:\Program Files\Windows Resource Kits\Tools>ping it-mt109g14-2 -4
Pinging IT-MT109G14-2.ad.louisville.edu [136.165.99.195] with 32 bytes of data:
Reply from 136.165.99.195: bytes=32 time<1ms TTL=128
Reply from 136.165.99.195: bytes=32 time<1ms TTL=128
Reply from 136.165.99.195: bytes=32 time<1ms TTL=128
Reply from 136.165.99.195: bytes=32 time<1ms TTL=128

Ping statistics for 136.165.99.195:
    Packets: Sent = 4, Received = 4, Lost = 0 (0% loss),
    Approximate round trip times in milli-seconds:
        Minimum = 0ms, Maximum = 0ms, Average = 0ms

C:\Program Files\Windows Resource Kits\Tools>_
```

Verify that the computer name resolves to the correct FQDN and to the correct IP address. In the above example, it-mt109G14-2 correctly resolves to IT-MT109G14-2.ad.louisville.edu and 136.165.99.195.

5. The client workstation must have the "File and Printer Sharing for Microsoft Networks" service installed for the active network adapter.
 - a. Click on **Start**
 - b. Click on **Control Panel**
 - c. Double-click on **Network Connections**
 - d. Right-click on **Local Area Connection** and select Properties
 - e. Verify that the **File and Printer Sharing for Microsoft Networks** service is installed:



6. If the Windows firewall is turned on, the client workstation must have firewall exceptions to allow the SCCM servers to access the workstation's admin shares. Access should include the 136.165.230.0/24 range.
 - a. From a [command shell](#), enter: `gpresult /SCOPE MACHINE | more`

```

C:\> Command Shell
Last time Group Policy was applied: 9/1/2011 at 2:00:06 PM
Group Policy was applied from: ADDC4.ad.louisville.edu
Group Policy slow link threshold: 500 kbps

Applied Group Policy Objects
-----
IT-Agent Install
IT-Sharepoint-XP
IT-TrustedSites
IT-DSIT-NTLM Test
IT-Synchronous Policy Application.
IT-Rename Admin
IT-Download Updates
IT-Add EntDev Admin
IT-RemoveDomainUsers
IT-Sharepoint-XP
IT-TrustedSites
IT-Open SCCM Ports
IT-Remove All Certificates
UofL Group Policy
Local Group Policy

The following GPOs were not applied because they were filtered out
-- More --

```

Verify that the “IP-OPEN SCCM Ports” GPO has been applied.

7. The client workstation must have the group “AD\Domain Admins” as a member of the local administrators group. SCCM needs access to \\computer\admin\$.

 - a. From a [command shell](#), enter: `net localgroup “Administrators”`
 - b. Verify that AD\Admin Admins is a member.

```

C:\Program Files\Windows Resource Kits\Tools>net localgroup "Administrators"
Alias name      Administrators
Comment

Members
-----
AD\d0mrac01
AD\Domain Admins
AD\IT_desktopsupport
AD\IT-EntDev
AD\mopurc01
AD\sysmop
godzilla
The command completed successfully.

C:\Program Files\Windows Resource Kits\Tools>_

```

8. The client workstation must allow “Remote Administration” for the SCCM subnet 136.165.230.0/24. SCCM needs to be able to use RPC, WMI, and/or DCOM remotely.

No examples for XP. If you are using a third-party firewall, please consult its documentation.

9. The client workstation must be able to autoenroll “ConfigMgr Client Certificate” certificates.

- a. On the **Start** menu, click **Run**, and then type **mmc** and **Enter**. This starts the Microsoft Management Console (MMC).
- b. In the console, click the **File** menu and then click **Add/Remove Snap-in**.
- c. In the **Add/Remove Snap-in** window, click **Certificates** and then click the **Add** button.
- d. In the **Certificates Snap-in** window, select **Computer account**, and then click **Next**.
- e. In the **Select Computer** window, select **Local computer**, and then click **Finish**. This adds the Certificates Snap-in to the list.
- f. In the **Add/Remove Snap-in** window, click the **Close** button.
- g. In the **Add/Remove snap-in** window, click **OK**. This adds the Certificates snap-in to the mmc console.
- h. Expand **Certificates (Local Computer) | Personal | Certificates**
- i. Verify that a certificate has been issued to the client workstation, that it is not expired, and that it uses the “ConfigMgr Client Certificate” certificate template.

| Issued To / | Issued By | Expiration Date | Intended Purposes | Friendly Name | Status | Certificate Template |
|---------------------------------|-----------|-----------------|-----------------------|---------------|--------|------------------------------|
| IT-MT109G14-2.ad.louisville.edu | ADDC2 | 8/17/2012 | Client Authentication | <None> | | Computer |
| IT-MT109G14-2.ad.louisville.edu | ADDC2 | 8/17/2012 | Client Authentication | <None> | | ConfigMgr Client Certificate |

10. The optional update “Group Policy Preference Client Side Extensions for Windows XP” (KB943729) must be installed.

See: <http://www.microsoft.com/download/en/details.aspx?displaylang=en&id=3628>

- a. Click on **Start**
- b. Click on **Control Panel**
- c. Double-click on **Add or Remove Programs**
- d. Click the [checkbox](#) “**Show Updates**”
- e. Verify “**Update for Windows XP (KB943729)**” is installed.

Add or Remove Programs

Change or Remove Programs

Add New Programs

Add/Remove Windows Components

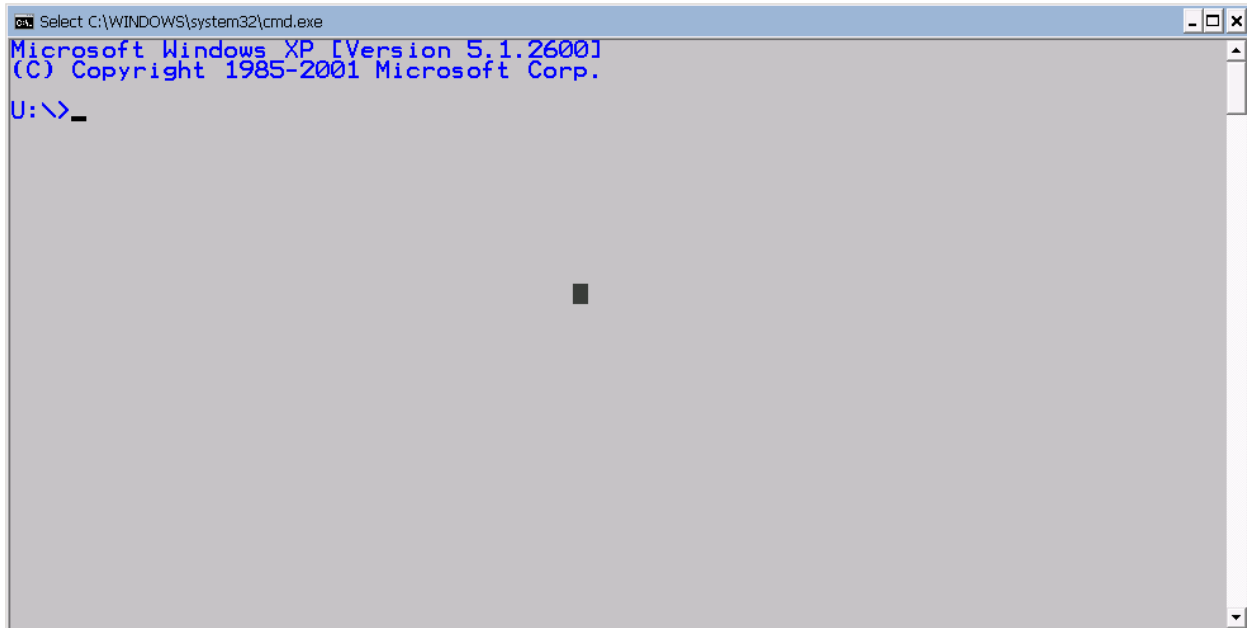
Set Program Access and Defaults

Currently installed programs and updates: Show updates Sort by: Name

| | | |
|--|--------------|-----------|
| Quest PowerGUI@ 2.1.1 | Size | 31.70MB |
| RocketDock 1.3.5 | Size | 11.98MB |
| SciTE4AutoIt3 2-11-2008 | Size | 10.44MB |
| Screenshot Captor 2.78.01 | Size | 14.71MB |
| Secunia PSI (2.0.0.3001) | Size | 33.98MB |
| Seven Remix XP 2.0 | | |
| Sonic Express Labeler | Size | 13.53MB |
| Sonic RecordNow! | Size | 15.63MB |
| Sonic Update Manager | Size | 2.39MB |
| Spices.Net 5 Evaluation | Size | 9.35MB |
| System Requirements Lab | Size | 1.01MB |
| TortoiseSVN 1.6.11.20210 (32 bit) | Size | 27.77MB |
| Unlocker 1.8.8 | Size | 0.29MB |
| Update for Windows XP (KB943729) | Installed On | 1/22/2009 |
| vbsedit | Size | 5.40MB |
| Visual Studio 2005 Tools for Office Second Edition Runtime | Size | 6.84MB |
| Visual Studio Tools for the Office system 3.0 Runtime | Size | 5.15MB |
| WIMGAPI | Size | 0.30MB |

Appendix 1: Open a Command Shell

1. Click on **Start**
2. Click on **Run**
3. Enter **CMD** in the [text box](#)
4. Click **OK**



Appendix 2: Enable ADUC Advanced Features

1. Click on **Start**
2. Click on **Control Panel**
3. Double-click on **Administrative Tools**
4. Double-click on **Active Directory Users and Computer**
5. Click on **View** in the [menu bar](#)

6. Make sure **Advanced Features** is checked.

