

# Access to Early Childhood Services Guide Overview

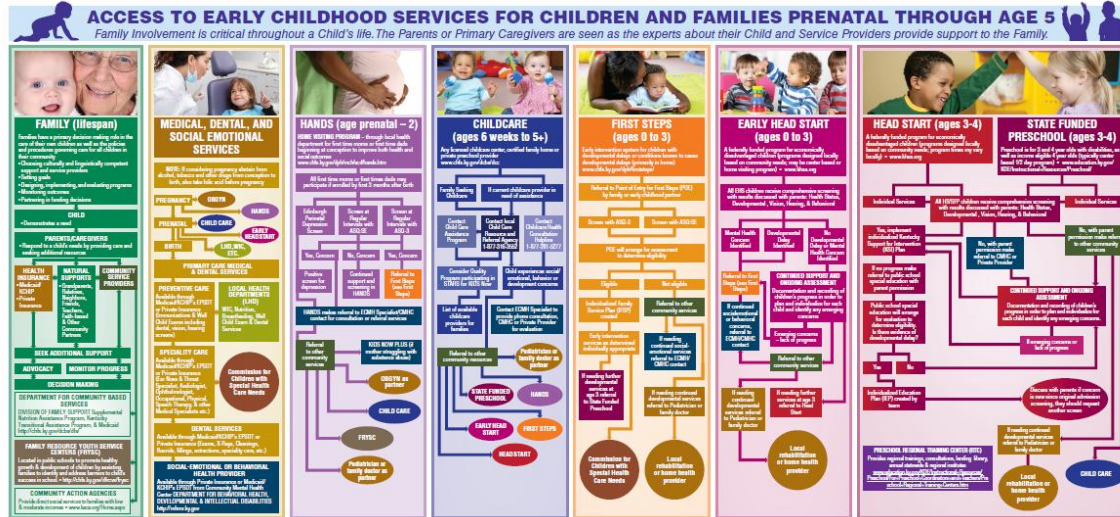
Designed by the Early Childhood Family Network Committee

**Presentation by Tal Curry**  
**Department for Public Health**

# Presentation Outline

- Vision, Purpose, Goals for this tool
- How this tool could be used
- Structure of this tool
- Journey through the tool
- Wrap up and questions about the tool

# Access Guide Page 1 and 2



## ACCESS TO EARLY CHILDHOOD SERVICES FOR CHILDREN AND FAMILIES PRENATAL THROUGH AGE 5

**PURPOSE:** To help service providers and families raise young children to appropriate programs and community services that are designed to support families with children from the prenatal stage through age five.

### FAMILY

**Family Support Resources**  
For more information on Family resources, please see link to KFFC <http://www.kffcc.org/family-support/>

### MEDICAL, DENTAL, & SOCIAL-EMOTIONAL SERVICES

**Maternity**  
1-800-838-2570 • <http://www.ky.gov/matnat.htm>

**Prenatal Health Plan**  
1-800-678-0803 • <http://www.paporthealthplan.com/>

**KCHIP: Kentucky Children's Health Insurance Program** is for children under the age of 18 who do not have health insurance and whose family income is below 200 percent of the federal poverty level.  
<http://www.kchip.ky.gov/kchip/>

**EPISOT: Early Prenatal Screening, Diagnosis, and Treatment** - provides prenatal health care for children and teens, specialty health care for maternity services.  
<http://www.kchip.ky.gov/kchip/>

**LHCD: Local Health Departments** - provide WIC, nutrition, breastfeeding and other women's health services. LHCD also provide prenatal health services, including child development, family violence, and mental health services.  
<http://www.ky.gov/epi/epi/epi/epi/epi/>

**WIC (Women, Infants, and Children) Nutrition Support Program** - Administered by LHCD, provides monthly food packages, nutrition education, and access to maternal, prenatal and pediatric health care services to low-income pregnant, breastfeeding and postpartum women, infants and children up to age 5.  
<http://www.ky.gov/wic/wic/wic/wic/wic/>

**Commission for Children with Special Health Care Needs** - provides care for children with physical disabilities.  
1-800-252-1100 • <http://www.ky.gov/children/>

**Four points of early childhood dental health:**

- First dental visit by age one
- Fluoridated and desensitized toothpaste by the parent to the child
- Periodic application of fluoride varnish
- Routine dental care in the early years because early primary teeth are important

### CHILDCARE

**CCAP: Child Care Assistance Program** - provides subsidy program for low-income families.  
<http://www.ky.gov/childcare/ccap/>

**CCRRR: Child Care Resources and Referral Agencies** - provide parent referrals and consultation and training of child care providers.  
<http://www.kentuckychildcare.org/parental-advocacy.aspx>

**CECC: Community Early Childhood Council** - improves the quality and availability of child care.  
<http://www.kentuckychildcare.org/parental-advocacy.aspx>

**STARS for KIDS Now** - Kentucky's voluntary quality rating improvement program.  
1-800-451-0000 • <http://www.ky.gov/stars/>

**COHC: Child Care Health Consultation** - Technical assistance of child care providers for health, safety, nutrition and infection control.  
<http://www.kentuckychildcare.org/>

**ECMHC: Early Childhood Mental Health Program** - consists of regional ECMHC Specialists who provide consultation and training to child care providers regarding social, emotional and behavioral issues. Also provides evaluation, assessment, and therapeutic services for children from birth through the age of 5 and their families. • <http://www.kentuckychildcare.org/>

**Kentucky Partnership for Early Childhood Services**  
<http://www.kentuckychildcare.org/>



**For More Information or Questions Contact:**  
Kentucky Partnership for Families and Children, Inc.  
207 Union Street, First Floor  
Franklin, KY 40501  
502-572-1520 • 1-800-363-3633  
[www.kypartnership.org](http://www.kypartnership.org)

### DEPARTMENT FOR BEHAVIORAL HEALTH, DEVELOPMENTAL & INTELLECTUAL DISABILITIES

**CMHC: Community Mental Health Centers or Comprehensive Care Centers**  
<http://www.ky.gov/behavioral-health/>

**ECMHC Services Through ECMHC Program** - CMHC case providers trained to work with children 3 years of age and younger and their families. (See CMHC website)

**KY IMPACT** - program which utilizes service coordination to wrap services around children with severe emotional disabilities.  
<http://www.ky.gov/behavioral-health/>

**RAC: Regional Interagency Councils** - are a part of the KY IMPACT and provide regional guidance to services for children struggling with social-emotional issues and their families.

**Impact Plus** - program for children at risk for entry into foster care or institutionalization.  
1-877-728-0277 • <http://www.ky.gov/behavioral-health/>

**KIDS Now Plus** - case management services for pregnant women at risk for SA, MI, and DV problems.  
800-374-0146 • <http://www.ky.gov/behavioral-health/>

### STATE RESOURCES FOR AUTISM

**Kentucky Autism Training Center**  
<http://www.kentuckyautism.org/>

This was made possible by:  
• Early Childhood Comprehensive Systems Grant (CCSG) grant through DPH, MCH Division  
• Kentucky Partnership for Families and Children, Inc. (KFFC)  
• Kentucky's System to Enhance Early Childhood Development (KY SEED)  
Developed in conjunction with:  
• Kentucky Partnership for Families and Children, Inc., Early Childhood Family Support Network  
• Department of Public Health, Division of Maternal and Child Health  
• KY Head Start Collaboration Office  
• Department for Community Based Services, Division of Child Care  
• Department for Behavioral Health, Developmental & Intellectual Disabilities  
• Kentucky Department of Education, Office of Next Generation Learners

## LOCAL CONTACTS

☐ Please use in local contact information where applicable

Local Health Department Number: <a href="http://lhd.ky.gov/lhd/">http://lhd.ky.gov/lhd/</a>
HANDS Coordinator (in LHCD):
First Steps Point of Entry: KY 1-800-440-0807
DCBS Family Support Office: <a href="http://lhd.ky.gov/fso/">http://lhd.ky.gov/fso/</a>
Community Action Agency: 1-800-456-3432
KY Head Start Collaboration Office: 502-564-6341
Head Start or Early Head Start Coordinator: <a href="http://www.ky.gov/">www.ky.gov</a>
Local School District: <a href="http://www.education.ky.gov/education/education/education/education/education/">http://www.education.ky.gov/education/education/education/education/education/</a>
State Funded Preschool Local Coordinator:
Child Care Resources & Referral Agency: 1-877-316-1032
Child Care Health Consultation: 1-877-381-0277
Community Mental Health Center: 800-755-0463
Early Childhood Mental Health Specialist: <a href="http://www.ky.gov/behavioral-health/early-childhood-mental-health/">http://www.ky.gov/behavioral-health/early-childhood-mental-health/</a>
Home Health Provider:
Local Rehabilitation Provider:
Prevent Child Abuse Kentucky: 859-225-8873 ( <a href="http://www.prevent.org/">www.prevent.org</a> )
Alcohol Helpline: 800-724-0200
Domestic Contact: 800-393-3333
Injury Prevention/SAFE KIDS Coalition: <a href="http://www.ky.gov/behavioral-health/SAFE-KIDS/">http://www.ky.gov/behavioral-health/SAFE-KIDS/</a>
KY Dept. for Libraries & Archives: <a href="http://lhd.ky.gov/information/kygovlibraries/">http://lhd.ky.gov/information/kygovlibraries/</a>
Locally Informed Prenatal Services (LIPS): 1-800-638-8477
Commission for Special Health Care Needs (CCSNC): 1-800-239-1100
Other:

**VISION:** to improve the integration of medical, educational, social-emotional and developmental services for families while establishing the need for family involvement and family driven care.

- Need or gaps in the coordination or integration of services
- Under Title of EC Services Guide
  - Family Involvement is critical throughout a Child's life.
  - The Parents or Primary Caregivers are seen as experts about their Child
  - and Service Providers provide support to the Family.

**PURPOSE:** to help service providers and families refer young children to appropriate programs and community services that are designed to support families with children from the prenatal stage through age five.

- This EC Guide can be a tool for early childhood professionals and for family members
- Referral to appropriate programs and community services
- EC Guide is designed to support families and their children from prenatal (conception) through age five.

**GOAL:** to improve the promotion, prevention, transition and treatment of children and families.

- Promotion & Prevention – Public Health model
- The goal is not to just react to a need, but begin to have systems (families and professionals) be preventive!
- Transition- begin to show a guide for transition children from one service to another

# Specific Goals

More specifically.....

- Promote early intervention
- To help community providers make appropriate referrals
- Understand the services provided/available
- Know what the age requirements are
- Be aware of transition phases
- Be aware of places where programs collaborate and coordinate services (blending, braiding, transitioning, seamless, uninterrupted)

# How it could be used?

1. Posted in Local Health Departments, Community Action Agencies, DCBS -Family Support, Primary Care Providers, etc.
2. Used by DCBS P&P offices, First Step Primary Service Coordinators, Pediatricians, Commission for Special Health Care Needs, Natural Support systems (Faith Based, Support Groups...)etc.



# Definitions

- EC Guide/EC Services Guide – Access to Early Childhood Services for Children and Families Prenatal through Age 5 (title of document)
- Family - includes parents, caregivers, legal guardians and often other natural supports like friend that lives in proximity that serves as grandparent
- Categories – 8 primary categories on front of the EC Guide. (Last box has two categories Head Start & State Funded Preschool)

# Structure of document

- Page 1 (Guide, roadmap, flowchart) -- highlights some of the primary early childhood programs and services
- Page 2 (or Informational side)– provides information on other state and national programs serving children and families
- Two editions – Laminated and folded
- Color coordination



# Page 2

## ACCESS TO EARLY CHILDHOOD SERVICES FOR CHILDREN AND FAMILIES PRENATAL THROUGH AGE 5

**PURPOSE:** To help service providers and families refer young children to appropriate programs and community services that are designed to support families with children from the prenatal stage through age five.

**VISION:** To improve the integration of medical, educational, social-emotional and developmental services for families while establishing the need for family involvement and family driven care.

**GOAL:** To improve the promotion, prevention, transition and treatment of children and families.

### FAMILY

#### Family Support Resources

For more information on Family resources, please see link to KPFC <http://www.kypartnership.org/>

### MEDICAL, DENTAL, & SOCIAL-EMOTIONAL SERVICES

#### Medicaid

1-800-635-2570 • <http://chfs.ky.gov/dms/default.htm>

#### Passport Health Plan

1-800-576-0625 • <http://www.passporthealthplan.com/>

**KCHIP:** Kentucky Children's Health Insurance Program is for children under the age of 19 who do not have health insurance and whose family income is below 200 percent of the federal poverty level  
<http://www.kidshealth.ky.gov/kchip/>

**EPSDT:** Early Periodic Screening, Diagnosis, and Treatment – provides preventative health care for children and teens; specialty health care for medically necessary services.  
<http://chfs.ky.gov/dms/services.htm>

**LHD:** Local Health Departments – provide WIC, nutrition, breastfeeding, and other women's health services. LHD also provide pediatric health services including child physicals, immunizations, fluoride varnish, lead screening and case management, and infectious disease services.  
<http://chfs.ky.gov/tpl/Local+Health+Department.htm>

**WIC:** (Women, Infants, and Children) Nutritional Support Program – Administered by LHD, provides a monthly food package, nutrition education, and access to maternal, prenatal and pediatric health care services to low-income pregnant, breastfeeding and postpartum women, infants and children up to age 5.  
<http://chfs.ky.gov/tpl/wic/wic.htm>

**Commission for Children with Special Health Care Needs** – provides care for children with physical disabilities.  
1-800-232-1160 • <http://chfs.ky.gov/ocshov/>

#### Four points of early childhood dental health:

- First dental visit by age one.
- Robust and dependable oral hygiene by the parent to the child
- Periodic application of fluoride varnishes
- Routine dental care in the early years because even primary teeth are important

### CHILDCARE

**CCAP:** Child Care Assistance Program – provides subsidy program for low income families  
<http://chfs.ky.gov/dms/occap.html>

**CCRR&R:** Child Care Resource and Referral Agencies – provides parent referrals and consultation and training of child care providers  
<http://www.kentuckypartnership.org/General/About/ccr.aspx>

**CECC:** Community Early Childhood Council – Improve the quality and availability of child care  
<http://www.education.ky.gov/KDE/instructional+Resources/Early+Childhood+Development/Community+Early+Childhood+Councils.htm>

**STARS for KIDS Now** – Kentucky's voluntary quality rating improvement system.  
1-800-421-1905 • <http://chfs.ky.gov/tpls/stars>

**CCHC:** Child Care Health Consultation – Technical assistance of childcare providers for health, safety, nutrition  
1-877-281-5277 • [www.kentuckychc.org](http://www.kentuckychc.org)

**ECMH:** Early Childhood Mental Health Program – consist of regional ECMH Specialists who provide consultation and training to child care providers regarding social, emotional and behavioral issues. Also provide evaluation, assessment, and therapeutic services for children from birth through the age of 5 and their families • <http://mhmr.ky.gov/mhmr/Early%20Childhood%20MH.asp?sub1>

**Kentucky Partnership for Early Childhood Services**  
<http://www.kentuckypartnership.org/Home.aspx>



For more information or questions contact:  
**Kentucky Partnership for Families and Children, Inc.**  
207 Holmas Street, First Floor  
Frankfort, KY 40601  
502-875-1320 • 1-800-369-0533  
[www.kypartnership.org](http://www.kypartnership.org)

### DEPARTMENT FOR BEHAVIORAL HEALTH, DEVELOPMENTAL & INTELLECTUAL DISABILITIES

**CMHC:** Community Mental Health Centers or Comprehensive Care Centers  
<http://chfs.ky.gov/dms/Community+Mental+Health+Centers.htm>

**ECMH Services:** Through ECMH Program – CMHC have providers trained to work with children 5 years of age and younger and their families. (See CMHC website)

**KY IMPACT** – program which utilizes service coordination to wrap services around children with severe emotional disabilities  
<http://mhmr.ky.gov/mhmr/KY%20Impact.asp>

**RIAC:** Regional Intercountry Councils – are a part of KY IMPACT and provide regional guidance to services for children struggling with social-emotional issues and their families

**Impact Plus** – program for children at risk for entry into foster care or institutionalization  
<http://mhmr.ky.gov/mhmr/IMPACT%20Plus.asp>

**KIDS Now Plus** – case management services for pregnant women at risk for SA, MH, and DV problems  
(800) 974-9146 • <http://todar.usy.edu/KIDSNOWWelcome.html>

### STATE RESOURCES FOR AUTISM

**Kentucky Autism Training Center:**  
<https://dofw.state.ky.edu/education/kyautismtraining>

#### This was made possible by:

- Early Childhood Comprehensive Systems Grant (ECCS grant through DPH, MOH Division)
- Kentucky Partnership for Families and Children, Inc. (KPFC)
- Kentucky's System to Enhance Early Childhood Development (KY SEED)

#### Developed in Conjunction with:

- Kentucky Partnership for Families and Children, Inc., Early Childhood Family Support Network Committee
- Department of Public Health, Division of Maternal and Child Health
- KY Head Start Collaboration Office
- Department for Community Based Services, Division of Child Care
- Department for Behavioral Health, Developmental & Intellectual Disabilities
- Kentucky Department of Education, Office of Next Generation Learners

### NATIONAL WEBSITE RESOURCES

**American Academy of Pediatrics:** <http://www.aap.org/>

**American Academy of Child and Adolescent Psychiatry:** <http://www.aacap.org/>

**Substance Abuse Mental Health Services Administration:** <http://www.samhsa.gov/>

**Zero to Three:** <http://www.zerotothree.org/>

**National Federation for Families:** <http://www.nffm.org/>

**National Institute of Mental Health:** <http://www.nimh.nih.gov/index.shtml>

**Center for Child and Human Development:** <http://uochd.georgetown.edu/>

**Autism Speaks:** <http://www.autismspeaks.org/>

**First Signs:** <http://www.firstsigns.org/>

**Learn the Signs, Act Early:** <http://www.cdc.gov/ncbddd/actearly/index.html>

**Autism Society of America:** <http://www.autism-society.org/>

## LOCAL CONTACTS

Please write in local contact information where applicable

Local Health Department Number: <http://chfs.ky.gov/dph>

HANDS Coordinator (in LHD):

First Steps Point of Entry: KY 1-800-442-0087

DCBS Family Support Office: <http://chfs.ky.gov/dcbso/da>

Community Action Agency: 1-800-456-3452

KY Head Start Collaboration Office: 502-564-8341

Head Start or Early Head Start Coordinator: [www.khsa.org](http://www.khsa.org)

Local School District: <http://www.education.ky.gov/KDE/About+Schools+and+Districts/Kentucky+Schools+and+Districts/>

State Funded Preschool Local Coordinator:

Child Care Resource & Referral Agency: 1-877-316-3582

Child Care Health Consultation: 1-877-281-5277

Community Mental Health Center: 855-705-0463

Early Childhood Mental Health Specialist: <http://mhmr.ky.gov/mhmr/Early%20Childhood%20MH.asp?sub1>

Home Health Providers:

Local Rehabilitation Provider:

Prevent Child Abuse Kentucky: 859-225-2879 ([www.pcaok.org](http://www.pcaok.org))

Abuse Helpline: 800-752-6200

Poison Control: 800-222-1222

Injury Prevention/SAFE KIDS Coalition: <http://www.kiprc.usy.edu/projects/papp/safekidsjune2011.pdf>

KY Dept. for Libraries & Archives: <http://fdla.ky.gov/libraries/PageLibraryDirectory.aspx>

Early Hearing Detection & Intervention: 877-757-4327

Visually Impaired Preschool Services (VIPS): 1-800-630-8477

Commission for Special Health Care Needs (CCHSNH): 1-800-232-1160

Other:



# Family Category



## FAMILY (lifespan)

Families have a primary decision making role in the care of their own children as well as the policies and procedures governing care for all children in their community

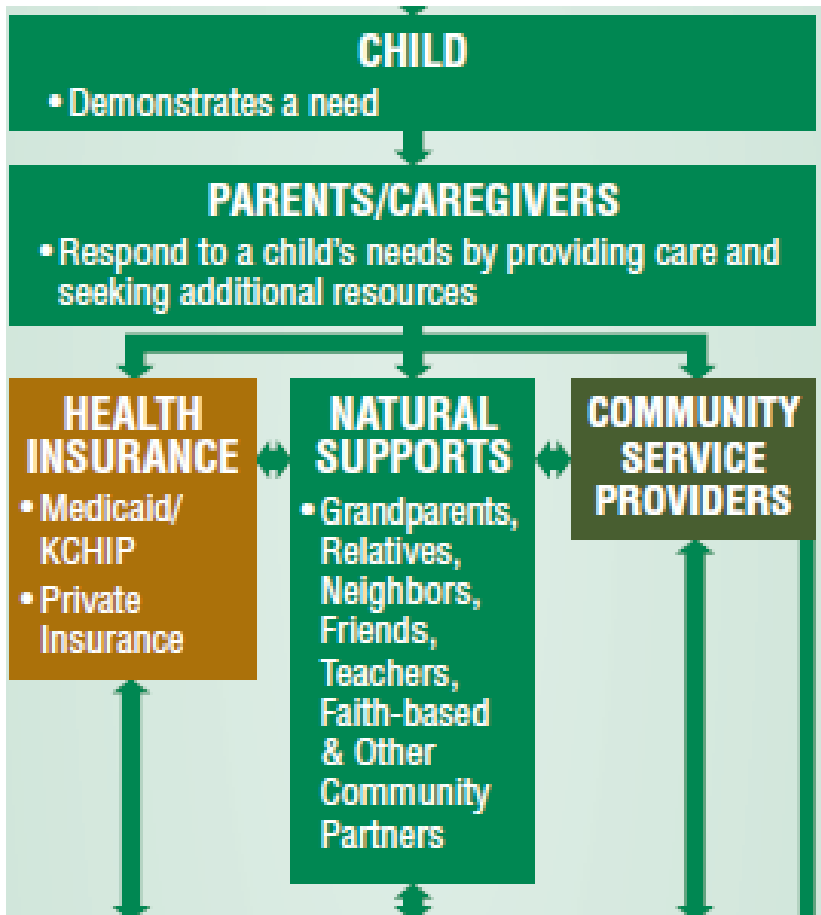
- Choosing culturally and linguistically competent support and service providers
- Setting goals
- Designing, implementing, and evaluating programs
- Monitoring outcomes
- Partnering in funding decisions

- Family involvement or family driven care is **paramount** to the system
- Where everything starts and flows from
- Should be integrated throughout categories so gave it its own category, first!
- Family governs care for child and their community
- Note -5 family driven system of care bullets

# Use for this tool in systems

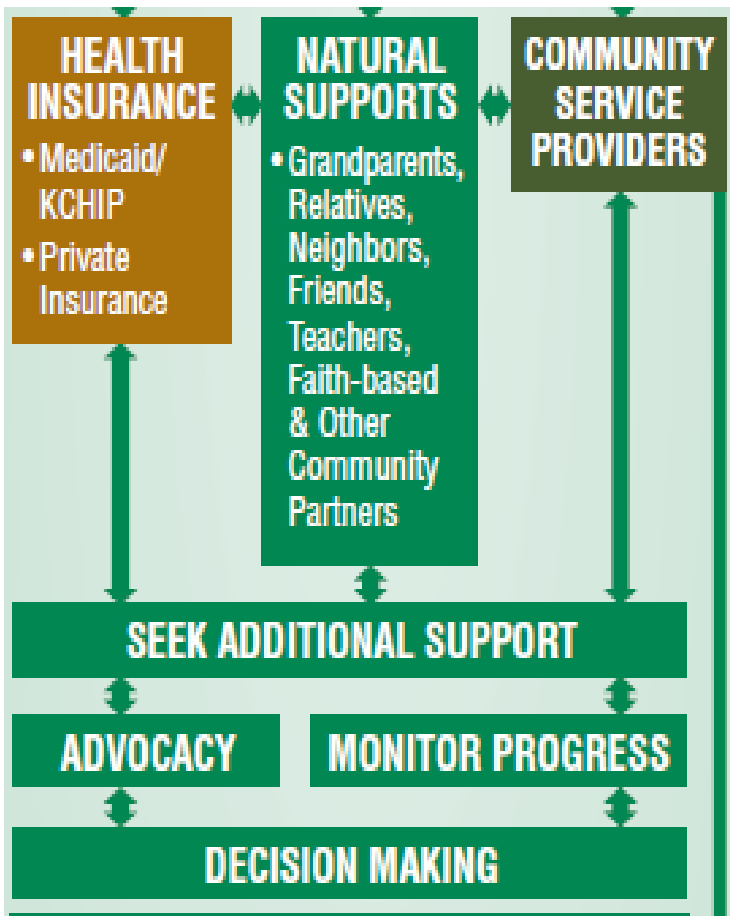
This tool is designed to emphasize and encourage family involvement with all systems providing services to children and families in order to strengthen the parent's role as an advocate and primary decision maker for their child's continued growth and development

# Who drives the need?



- Child drives the need!
- Caregivers respond by – providing care and/or seeking additional resources

# Ongoing cycle of family driven care



- Caregivers have to seek additional support
- Advocate
- Make decisions
- Monitor progress

One category where families enter system use:

- DCBS Family Support
- FRYSC - Schools
- Community Action Agency



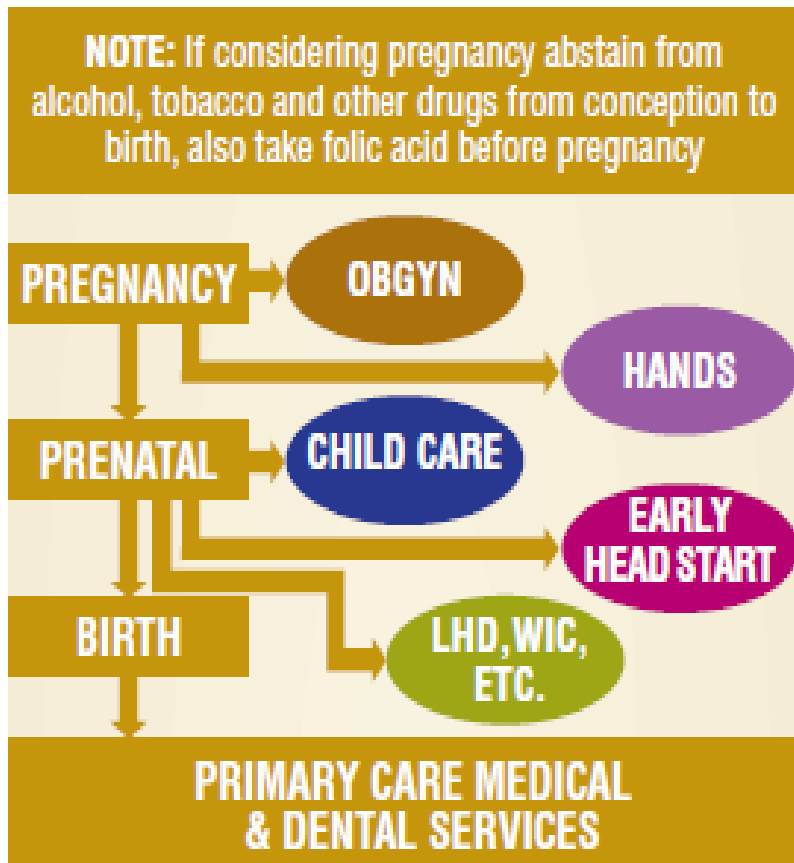
# Medical Category



**MEDICAL, DENTAL, AND  
SOCIAL EMOTIONAL  
SERVICES**

- Medical Category links to Health Insurance under Family Category
- Medicaid/KCHIP or Private Insurance
- Need to include Educational Model of services Part C (First Steps), then Part B (State Funded Preschool) with Medical model of services

# Medical Category continued



- Other Category where families start in a system
- Category emphasizes prevention starting with Note: Folic Acid and abstaining from ATOD.
- Conception to Birth Period
- Most boxes yellow except OBGYN and LHD ovals
- Primary Care Provider including Preventative, Specialty Care, & Dental

# Social-Emotional or Behavioral Health Provider

## **SOCIAL-EMOTIONAL OR BEHAVIORAL HEALTH PROVIDER**

Available through Private Insurance or Medicaid/  
KCHIP's EPSDT from Community Mental Health  
Center DEPARTMENT FOR BEHAVIORAL HEALTH,  
DEVELOPMENTAL & INTELLECTUAL DISABILITIES  
<http://mhmr.ky.gov>

- Final box in category blue to highlight Social-Emotional needs served through Medical Model of services
- Many state services under DBHDID website
- This color is repeated in 6 places under primary categories

# Categories of Primary EC Services- HANDS



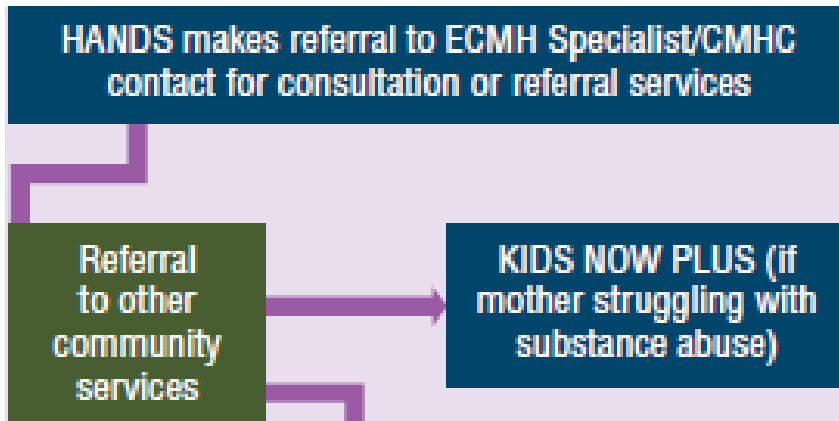
## HANDS (age prenatal – 2)

**HOME VISITING PROGRAM** – through local health department for first time moms or first time dads beginning at conception to improve both health and social outcomes

[www.chfs.ky.gov/dph/mch/ecd/hands.htm](http://www.chfs.ky.gov/dph/mch/ecd/hands.htm)

- Proactive program with great results!
- Enrollment is conception to 12 weeks after a child is born...do you know why?
- Best outcomes are from the 1<sup>st</sup> trimester a mother/father enters program
- Don't forget first time dads for referral of family to the program (could be mother's third child)!

# HANDS Continued



- Note after HANDS does 3 different screening with family -- referral information to other community services/providers
- This blue matches blue of previous category under Social- Emotional or other BH provider
- Note color coordination not perfect with informational side/page 2 (red Medical/ Social Emotional Programs)

# Categories of Primary EC Services- Childcare



## **CHILDCARE** **(ages 6 weeks to 5+)**

Any licensed childcare center, certified family home or private preschool provider  
[www.chfs.ky.gov/dcbs/dcc](http://www.chfs.ky.gov/dcbs/dcc)

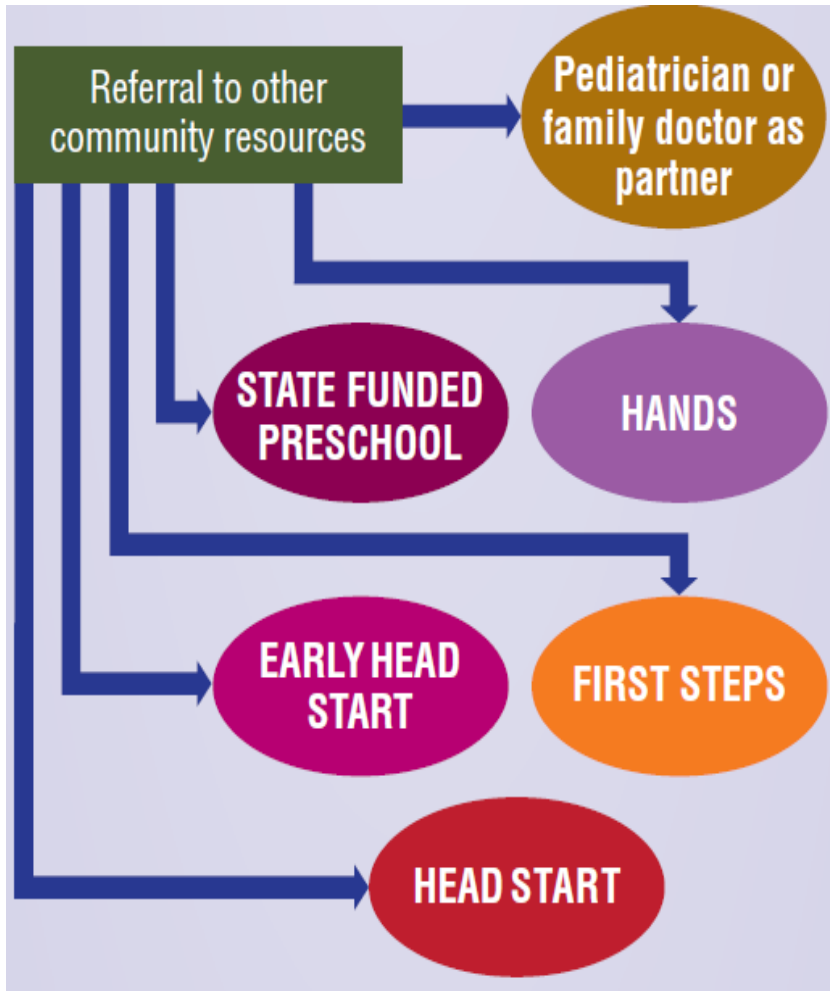
- Childcare – there are many types of childcare
- Approximately 3000 licensed childcare centers and certified family home providers
- Childcare is different than State Funded Preschool

# Childcare continued



- This category attempts to show the relationship or process of a family seeking childcare

# Childcare continued



- Referral to other community resources should include a “rainbow” of possibilities
- This is important to consider when thinking about a child receiving the most appropriate services and when a child is transitioning between programs in the same day



# Categories of Primary EC Services- First Steps



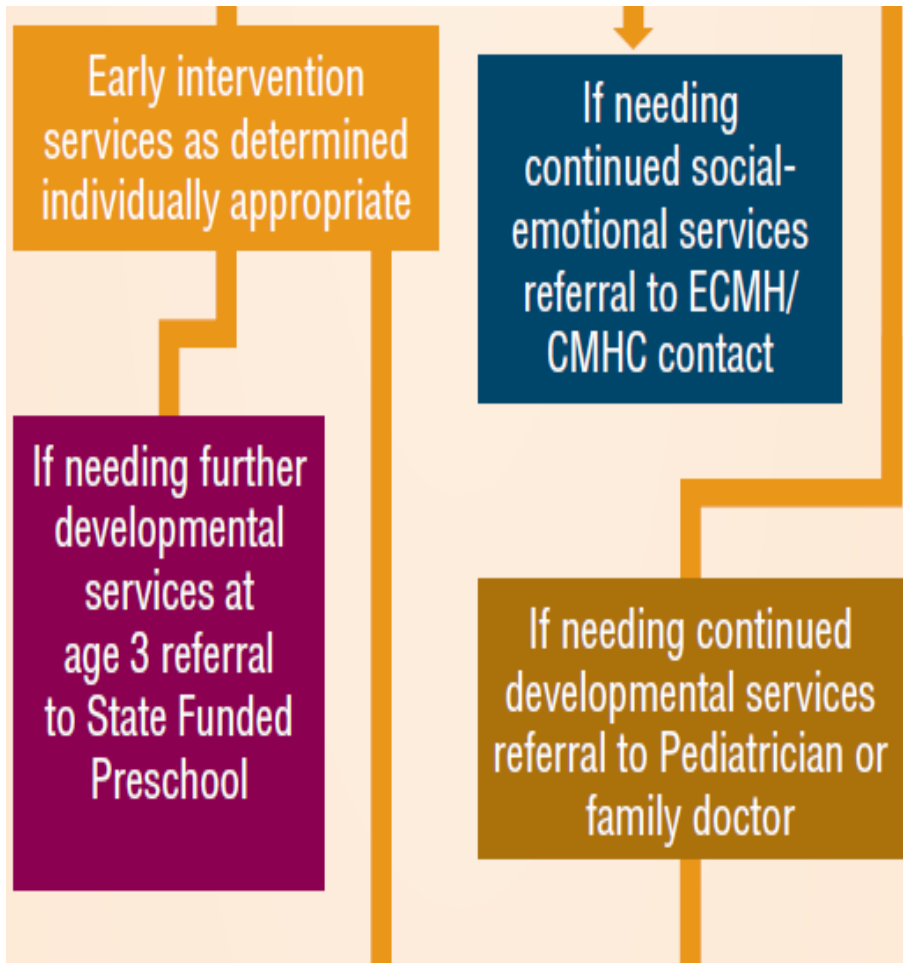
## FIRST STEPS (ages 0 to 3)

Early intervention system for children with developmental delays or conditions known to cause developmental delays (primarily in home)

[www.chfs.ky.gov/dph/firststeps/](http://www.chfs.ky.gov/dph/firststeps/)

- Part C Program or statewide Early Intervention System for children birth and ending at age three.
- Service Coordination
- Strengths and limitations

# Under First Steps Category



- Example of different color coding demonstrating transition and collaboration

# Categories of Primary EC Services- Early Head Start



## **EARLY HEAD START** **(ages 0 to 3)**

A federally funded program for economically disadvantaged children (programs designed locally based on community needs; may be center based or home visiting program) • [www.khsa.org](http://www.khsa.org)

- Only Primary EC Service that is not statewide
- There are approximately 14 Early Head Start Programs servicing infants and toddlers.

# Categories of Primary EC Services- Head Start



## **HEAD START (ages 3-4)**

A federally funded program for economically disadvantaged children (programs designed locally based on community needs; program times may vary locally) • [www.khsa.org](http://www.khsa.org)

- All 120 counties have a Head Start program serving some of our states most vulnerable children and families.
- Comprehensive program with strong family involvement component

# Categories of Primary EC Services- State Funded Preschool



## STATE FUNDED PRESCHOOL (ages 3-4)

Preschool is for 3 and 4 year olds with disabilities, as well as income eligible 4 year olds (typically center based 1/2 day program) • [www.education.ky.gov/KDE/Instructional+Resources/Preschool/](http://www.education.ky.gov/KDE/Instructional+Resources/Preschool/)

- 172 school districts offer Part B services or Individual Education Program for children with educational disabilities/developmental delays and other income eligible children
- Balance with Childcare and Medical model

# Informational Side

## MEDICAL, DENTAL, & SOCIAL-EMOTIONAL SERVICES

### Medicaid

1-800-635-2570 • <http://chfs.ky.gov/dms/default.htm>

---

### Passport Health Plan

1-800-578-0603 • <http://www.passporthealthplan.com/>

---

- Two insurance programs that will soon be four programs as of October 1, 2011.



# Informational Side

**WIC: (Women, Infants, and Children) Nutritional Support Program** – Administered by LHD; provides a monthly food package, nutrition education, and access to maternal, prenatal and pediatric health care services to low-income pregnant, breastfeeding and postpartum women, infants and children up to age 5.  
<http://chfs.ky.gov/dph/mch/ns/wic.htm>

---

**Commission for Children with Special Health Care Needs**  
– provides care for children with physical disabilities.  
1-800-232-1160 • <http://chfs.ky.gov/ccshcn/>

- WIC is a LHD program that is a common thread among our EC families –prenatal to age 5.
- CCSHCN is a medical program

# Info side

## CHILDCARE

**CCAP: Child Care Assistance Program** – provides subsidy program for low income families

<http://chfs.ky.gov/dcbs/dcc/ccap.html>

---

**CCR&R: Child Care Resource and Referral Agencies** – provides parent referrals and consultation and training of child care providers

<http://www.kentuckypartnership.org/General/About/ccrr.aspx>

---

- CCAP – example of federal assistance program
- An example of technical assistance provider for child care and families



# Info Side

- Example of State and National Resources

## STATE RESOURCES FOR AUTISM

Kentucky Autism Training Center:

<https://louisville.edu/education/kyautismtraining>

# Local Contacts section-info side

## LOCAL CONTACTS



Please write in local contact information where applicable

Local Health Department Number: <http://chfs.ky.gov/dph>

HANDS Coordinator (In LHD):

First Steps Point of Entry: KY 1-800-442-0087

- For local provider to fill in
- Or for family to fill in

# EC Services Guide made possible by ECCS, KPFC, and KY SEED

- Dissemination
- Survey
- Extra copies
- Website

## This was made possible by:

- Early Childhood Comprehensive Systems Grant (ECCS grant through DPH, MCH Division)
- Kentucky Partnership for Families and Children, Inc. (KPFC)
- Kentucky's System for Enhancing Early Development (KY SEED)

# How will you use this EC Guide?

1. With systems that are:
  - a) Statewide?
  - b) Regionally?
  - c) Locally?
2. In your own Professional Development?
3. How would you present or train guide with:
  - a) a family?
  - b) with an EC professional?
  - c) with a group?

# Access Guide Online

<http://kypartnership.org/resource/early-childhood-services/>

# Presenter Information

Tal Curry, LCSW

Early Childhood Promotion

Department for Public Health

275 East Main St, HS2W-C

Frankfort, KY 40621

[tal.curry@ky.gov](mailto:tal.curry@ky.gov)

Questions?