



COLLEGE OF EDUCATION & HUMAN DEVELOPMENT

CEHD Insider - October 2018

College, Student, Alumni News, and Special Events

CEHD News...

Dean's Greeting



Dean Ann E.
Larson

The University of Louisville's new President, Dr. Neeli Bendapudi, will be inaugurated this week as the University's 18th President. Neeli, as she prefers to be called, has shared a consistent message about three pillars for the University and its strategic outcomes and success: UofL will be a great place to learn; a great place to work; and a great place to invest with diversity, equity and inclusion as an integral part of each pillar.

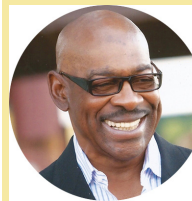
I am proud to share that on September 25th, President Bendapudi announced to the media, campus and the community that UofL has been named one of the top three universities nationally for how it serves African American students in a report released by the University of Southern California's (USC) Race and Equity Center, "Black Students at Public Colleges and Universities: A 50 State Report Card." Although our University and all U.S. universities and colleges have an urgent imperative and critical work to do to better serve more than 900,000 African American students collectively enrolled in higher education, the USC report did cite a few schools that can be looked to as exemplars. The University of Louisville is one of those schools. **If you have not yet read the report, I encourage you to do so.**

CEHD has a long-standing and focused commitment to recruiting and supporting students of color in programs including the Multicultural Teacher Recruitment Program (MTRP), Sherry Durham, coordinator, the Holmes Scholars program, and through a number of historic, standing and new initiatives that engage students, faculty, staff and community and P-12 school partners to prioritize diversity, equity and social justice. Some of these include CEHD's standing Diversity Committee; faculty development of a stand-alone standard of "Understands the Complex Lives of Students and Adults in Schools and Society" with specific indicators in teacher preparation programs. Of significant importance, CEHD's recent appointment of Dr. Terri Rowland, director of diversity and inclusion and faculty member in the Department of Educational Leadership, Evaluation and Organizational Development, who will continue to help the College improve and advance in areas related to diversity, equity and social justice. We have talented and inspiring faculty who have expertise in their teaching, research, and service in diversity and cross-cultural competence. CEHD faculty and students are also engaged in funded work with UofL's Cooperative Consortium for Transdisciplinary Social Justice Research with outreach to the community and University. Dion Copeland, CEHD's student council president (UG), has been meeting and working with a number of us in the CEHD to focus on diversity and inclusion through student empowerment and success.

CEHD's strategic plan's priority of Diversity, Equity, and Social Justice reaffirms that these are crucial to our mission, vision, and day-to-day work, and are reflected in our Diversity Statement. CEHD is strategically dedicated to representative search committees, strategic outreach, and inclusive candidate pools in current and future faculty and staff searches so that recruiting and retaining African American and other faculty members of color will be both successful and beneficial to undergraduate and graduate students and their academic experiences and success. These are challenges at UofL, in CEHD, and nationwide that deserve attention and our best efforts.

We wish President Bendapudi a successful inauguration and events week as UofL's 18th President and celebrate with her along with Dr. Mordean Taylor-Archer, vice provost of diversity and international affairs, the University's high scores in USC's 2018 Race and Equity Center report.

Whitehead Named UofL 2018 Alumni Fellow



Eddie Whitehead, a graduate of the MEd in Elementary Education program, is the 2018 UofL Alumni Fellow in Education. Whitehead is a successful businessman and father to former UofL basketball player, Luke Whitehead. The 2018 Fellows will be presented their awards during the annual UofL Alumni Fellows event that will be held,

Thursday, October 25th, at the Henry Clay Building in downtown Louisville. Whitehead was also featured in a previous issue of UofL Magazine. **Read more...**

Bay-Williams Invited to Give KU Inaugural Lecture



Jenny Bay-Williams, PhD, professor in the Department of Middle and Secondary Education, was invited by the University of Kansas (KU) School of Education to give the inaugural Lelon Capps Lecture, on October 1, 2018. Her presentation, "How to Give Students a Strategic Advantage in Math Class and Beyond," challenges

educators to consider ways to engage students in making strategic decisions as a priority in doing mathematics, as well as a way to learn to use mathematics in solving real problems. **Read more about the lecture...**

In addition, Dr. Bay-Williams was invited in September by the Jamaican Ministry of Education to train 170 university and K-12 Math coaches and teacher educators.

Submit Items for the Insider

The CEHD Insider is a monthly newsletter that informs faculty, staff, and constituents of college news and events. Information such as research, presentations, publications, awards, conferences, or special events are featured in each issue. If you have news to share, please send to dorothy@louisville.edu.





Finch and Harman Named Among Top 5 Faculty Favorites

John Finch, PhD, co-director of the Nystrand Center and clinical faculty in the Department of Early Childhood and Elementary Education, and Katie Harman, PhD, clinical assistant professor in the Department of Health and Sport Sciences, were named among UofL's 2017-18 Top 5 Faculty Favorites.

The following CEHD faculty received nominations:

ECEE	Ann Herd	Dylan Naeger
Shannon Putman	Jason Immekus	Carol O'Neal
ECPY	Brittany Inge	Gin Presley
Geoffrey Bailey	Kyle Ingle	Liza Reader
Brian Buford	Detra Johnson	Sam Schmidt
Amy Hirschy	Micah Kamrass	Megan Shreffler
Lisa Hooper	Geraldine Mack	Brock Symons
Susan Longerbeam	Rodney Merkley	Daniela Terson de Paleville
Lali McCubbin	Erin Mires	Cody Windhorst
Amanda Mitchell	Meghan Pifer	MISE
Kate Snyder	Ishwanzya Rivers	Penny Howell
Ahmad Washington	Amber Roberts-Scott	Lateefah Id-Deen
Hongryun Woo	Kevin Rose	Stephanie Philipp
ELEOD	Terri Rowland	Steve Swan
Meera Alagaraja	Brad Shuck	Shelley Thomas
Matt Bergman	Margaret Smith	Allison Williams
Lee Bewley	Devon Twyford	SPED
Roger Buskill	Christine Wiggins-Romesburg	Deb Bauder
Kerry Charron	HSS	Justin Cooper
Denise Cumberland	Kathy Carter	Erick Dubuque
Jolyn Dahlvig	John Caruso	Regina Hirn
Lisa-Ann Ferris	Jessica Gibb	Amy Lingo
Donna Gaus	Chris Greenwell	Scott Patton
Casey George	Meg Hancock	Rob Pennington
Glenn Gittings	Jason Jagger	Early Childhood Research Center
Kathleen Gosser	Mike Jett	Christie Angelton
Jake Gross	B.J. Levis	

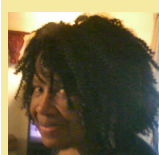
Read each nomination...

Did you know...

CEHD community engagement efforts increased significantly during the 2017-18 academic year!

- 4.5% increase in community engagement activities posted in faculty work plans
- 24% increase of local community engagement activities during 2017-18
- 34% increase in community engagement activities across all departments in the CEHD

Foster Attends Conference, Publishes Article



Michele Foster, PhD, professor and Henry Heuser Jr. Endowed Chair of Urban Education Partnerships, and a representative from the Jefferson County Public Schools (JCPS) Research Office, attended the annual **National Network of Research Practice Partnership (NNERPP)** conference that was held in Portland, Oregon. NNERPP is based at Rice University and is a network of research practice partnerships of which the **UofL and JCPS partnership is a member**. Dr. Foster also published, "The More Things Change, the More They Stay the Same: African American English, Language Policy, and African American Learners," in the **International Journal of Qualitative Studies in Education**. Tryphenia B. Peele-Eady, University of New Mexico, is co-author of the article.

Sixth Edition of Hums' Book Published



Mary Hums, PhD, professor in the Department of Health and Sport Sciences, reported that the 6th edition of her book, "Principles and Practice of Sport Management," was just released by Jones and Bartlett publishers. Co-authors are Lisa Masteralex-is and Carol Barr. The book provides students with the foundation necessary to prepare for a variety of sport management careers. [Read more...](#)

Bergman Keynote at Summit



Matt Bergman, PhD, assistant professor in the Department of Educational Leadership and Organizational Development, was the keynote speaker at the Advising Summit. The summit was held in September by The Graduate! Network, Inc. at Louisville's Seelbach Hotel. His presentation was titled, "Combining Data and Storytelling to Inform Your Work and Drive Comebacker Success." Dr. Bergman also did a **podcast and blogpost** with Helix Education about adult learners in higher education.

Norton-Meier Publishes Article



Lori Norton-Meier, PhD, professor and interim director of the Early Childhood Research Center, published with co-author, Brian Hand, "I Will Just Say SWH It: The Learning Lens of Teachers as They Engage in the Exploration of Argument-Based Inquiry," in the **Journal of Adolescent and Adult Literacy**.

CEHD Faculty Selected for Delphi Seminar

Keith Davis, EdD, clinical associate professor in Educational Leadership, Evaluation and Organizational Development (ELEOD), Erin Mires, PhD, assistant clinical professor in ELEOD, and Todd Whitney, PhD, assistant professor in Special Education, were selected to participate in the 2018-19 Seminar on Teaching for New Faculty (STNF) that is sponsored by the Office of the Provost and the Delphi Center for Teaching and Learning.

Like us on Facebook:

<http://www.facebook.com/uofleducation>



The University of Louisville is an equal opportunity institution.

Submit Items for the Insider

The CEHD Insider is a monthly newsletter that informs faculty, staff, and constituents of college news and events. Information such as research, presentations, publications, awards, conferences, or special events are featured in each issue. If you have news to share, please send to dorothy@louisville.edu.





Congratulations to Congressman John Yarmuth on being presented the Louisville Writing Project's (LWP) Patronus Award. Pictured left to right: Dr. Dottie Willis, LWP Teacher Consultant and Associate Professor of Education, Annsley Frazier School of Education at Bellarmine University;

Congressman Yarmuth; and Jean Wolph, director of LWP and the Kentucky Writing Project.

Tucker Elected to Board, Publishes Article



Stephen Tucker, PhD, assistant professor in the Department of Early Childhood and Elementary Education, was elected to the Executive Board of the American Educational Research Association (AERA) SIG-Technology, Instruction, Cognition, and Learning (TICL). During 2018-19, he will serve as TICL Communications Officer, in 2019-2020

he will serve as TICL Program Chair, and in 2020-2021 he will serve as TICL Chair. Dr. Tucker also published with co-author, Lee Hyekyoung, Utah State University, "Living and Teaching in Two Worlds: Professional Identity Development in Transnational Dual Language Immersion Teachers," in the *Journal of Education and Practice*.



CEHD Faculty and Staff Support the AHA Heart Walk

Thirty CEHD faculty, staff, and friends of the college participated in the annual UofL and American Heart Association (AHA) Heart Walk that was held at

Waterfront Park in Louisville. The group raised \$964 for the cause. A special thanks to co-captains, Heidi Cooley-Cook, Kentucky Autism Training Center, and Kerry Charron, PhD, Department of Educational Leadership, Evaluation and Organizational Development, and all those who participated in the walk and contributed to the success of the event.

Staff News



Erica Camp, administrative associate in the Department of Health and Sport Sciences, and **Sherry Durham**, coordinator of the Multicultural Teacher Recruitment Program (MTRP), were elected to serve as co-chairs of the CEHD's Diversity Committee. Terri Rowland, director of diversity and inclusion and clinical assistant professor in ELEOD, stated that they are excited about the leadership and vision Erica and Sherry will bring to the committee.



Student News

Mike Hart, a doctoral student in the counseling psychology program, was invited to post a blog on *The Learning Scientists site*. The blog has a large, international readership and it is a proud achievement for a student to be selected to submit a post.

Alumni News

Tamela Compton, a graduate of the MEd in college student personnel with a concentration in school counseling and an EdD in Educational Leadership and Organizational Development program, is the new principal of Hawthorne Elementary School. [Read more...](#)

Marcia Carmichael-Murphy, a graduate of the EdS in Educational Administration with a certification in principalship and an EdD in Educational Leadership and Organizational Development, was named the new principal of Coleridge-Taylor Elementary. [Read more...](#)

Alison Paige Begor, a graduate of the MS in Human Resources and Organizational Development program with a concentration in Human Resource Leadership, is the new director of human resources for Transylvania University.

Darryl Farmer, a graduate of the MAT in Social Sciences program, was named the new principal at duPont Manual High School. [Read more...](#)

Upcoming Events

- Friday, October 19th, 2018, 6 - 9 p.m.*
Moonshine Mash Bash
Gheens Science Hall and Rauch Planetarium
The event will feature the grand opening of the Mary Ann Russell Science Education Exhibit about the moon. Jephtha Creed moonshine cocktails will be served along with out-of-this-world hors d'oeuvres. Tickets are \$47 per person and includes food and 2 drink tickets. [Click here to register.](#)
- Friday, October 26th, 2018, 5 - 7 p.m.*
CEHD Alumni Homecoming Event
SAC - new wing, rooms 116 and 117
Alumni, faculty, and staff are invited to attend. Faculty and students will showcase their work and research. Light refreshments will be served. [Click here to RSVP by October 16th, 2018.](#)

Photos from the 2018 UofL AHA Heart Walk



Submit Items for the Insider

The CEHD Insider is a monthly newsletter that informs faculty, staff, and constituents of college news and events. Information such as research, presentations, publications, awards, conferences, or special events are featured in each issue. If you have news to share, please send to dorothy@louisville.edu.

