



# COLLEGE OF EDUCATION & HUMAN DEVELOPMENT

## CEHD Insider - November 2018

College, Student, Alumni News, and Special Events

### CEHD News...

#### *Happy 50th Anniversary CEHD!*



Dean Ann E.  
Larson

#### **Dean's Greeting**

In this issue of the November 2018 CEHD Insider, I want to acknowledge and express my sincere gratitude on behalf of our students, staff, and faculty to the distinguished 2018 UofL Alumni Fellow in Education, Mr. Eddie Whitehead, and his wife, Mrs. Lynn Whitehead, who spent time with us at UofL during Homecoming Week. He is a 1967 graduate of the bachelor's in elementary education program and later went on to earn a master's of social work and a master's in public health epidemiology from the University of California, Berkeley. Mr. Whitehead played on the UofL's men's basketball team, 1963-66, and was one of the first African American players on the team during the 1963-64 season. His son, Luke Whitehead, was also a standout basketball player at UofL—wearing his dad's No. 24 jersey. Mr. Whitehead served in the U.S. Air Force and was a member of the State Department's armed services all-star team. He is the owner of Whitehead Media Group, was also president and general manager of several television stations, and has served on a variety of boards, including the San Francisco Art Institute, American Red Cross San Francisco, and the Salvation Army San Francisco.

I want to extend a special thanks to all CEHD faculty, staff, and alumni who met with Mr. and Mrs. Whitehead during their visit and shared information about their programs, research, and community engagement initiatives.

Our first CEHD Alumni Homecoming Celebration was held on Friday, October 26th and was a great success! I want to express sincere gratitude to those who organized the event, specifically the CEHD Dean's Advisory Board members and alumni, Dr. Henry Cunningham, UofL Office of Community Engagement; Dr. Linda Hargan, retired CEO of Center for Teaching and Learning, Kentucky P-12 educator, administrator and Kentucky Department of Education (KDE) leader; and Dr. Lois Adams, consultant and retired CCSSO associate deputy director, Kentucky P-12 educator, administrator and KDE leader. Each took the lead in planning the event and making it the great experience for everyone who attended. The event featured President Bendapudi bringing greetings and interacting with guests; a reception; and round table sessions to learn about and discuss current research, programs, and community outreach with the following CEHD faculty and staff:

--Drs. Chris Greenwell and Adrienne Bratcher – Department of Health and Sport Sciences;  
--Ms. Sherry Durham - Multicultural Teacher Recruitment Program (MTRP);

--Drs. Jeffrey Sun and Meghan Pifer – Department of Educational Leadership, Evaluation and Organizational Development and the Fort Knox Master Educator Course;  
--Heidi Cooley Cook, Mike Miller, and Sarah Bays – Kentucky Autism Training Center (KATC);  
--Dr. Lori Norton-Meier – Early Childhood Research Center and the Department of Early Childhood and Elementary Education;  
--Drs. John Finch and Penny Howell – Nystrand Center of Excellence in Education;  
--Dr. Terry Scott – Center for Instructional and Behavioral Research in Schools (CIBRS);  
--Dr. Harrie Buecker – Department of Educational Leadership, Evaluation and Organizational Development, and the Educational Administration and Leadership program and current research and community partnerships;  
--Mark Duckwall – Gheens Science Hall and Rauch Planetarium;  
--Dr. Jean (Chin-Wen) Lee – Department of Special Education and the Gifted and Talented Endorsement Program.

It was a pleasure to be with our students, faculty, and staff during Homecoming Week and to show Mr. and Mrs. Whitehead just how much our College and the University have changed over the years. Again, I sincerely thank you all for making the CEHD shine among the many festivities and events surrounding UofL's 2018 Homecoming Week! GO CARDS!

#### **SPAD Ranked 3rd in Nation**

The B.S. in Sport Administration is now ranked 3rd in the nation by **Sport Management Degree Guide, 2018-19**. Sports Management Degree Guide provides the most up-to-date information about pursuing the best bachelor's and master's degrees in sport management.



#### **Washington's Hip Hop Summit Featured on WAVE3**

Ahmad Washington, PhD, assistant professor in the Department of Counseling and Human Development, and Nyree Clayton-Taylor, a participant in the Louisville Writing Project Summer Institute and teacher at Wheatley Elementary, were interviewed by **WAVE3** about the Hip Hop Summit presented to Jefferson County Public Schools (JCPS) teachers. They discussed how the music can help students find their own voice and how teachers can incorporate hip hop music into their own teaching and research.

#### **Submit Items for the Insider**

The CEHD Insider is a monthly newsletter that informs faculty, staff, and constituents of college news and events. Information such as research, presentations, publications, awards, conferences, or special events are featured in each issue. If you have news to share, please send to [dorothy@louisville.edu](mailto:dorothy@louisville.edu).



## Vidoni Presents at AIESEP Specialist Seminar



Carla Vidoni, PhD, associate professor in the Department of Health and Sport Sciences, was one of 76 physical education teacher education (PETE) specialists that were invited to participate in the Specialist Seminar--Future Directions in Physical Education Assessment, which was held in October at Fontys University in Eindhoven, The Netherlands.

The International Association for Physical Education in Higher Education (AIESEP) and Fontys University supported the event. Dr. Vidoni and researchers from 20 different countries shared assessment practices in PETE and P-12 physical education. She also gave two presentations at the seminar.

[Visit the seminar website...](#)

## News from ELEOD



**Ishwanzya Rivers**, PhD, clinical assistant professor in the Department of Educational Leadership, Evaluation and Organizational Development (ELEOD), served as Moderator for the African American Initiative Education Summit Roundtable Discussion featuring Dr. Wayne Lewis, Jr., Kentucky Commissioner of Education, and Ms. Diane Porter, a member of the Jefferson County Public Schools' (JCPS) Board of Education. The event was held in September.



**Erin Mires**, PhD, clinical assistant professor in ELEOD, was accepted as a Society for Human Resource Management (SHRM) Advocacy Captain (for Inclusion). SHRM seeks to establish an Advocacy Captain in each of the 435 congressional districts across the country. Advocacy Captains play a vital role in advocating the HR perspective on workplace public policy issue.

JCPS has contracted **Debbie Powers**, EdD, clinical assistant professor, to oversee the logistics of the district's summer reading programs, in collaboration with the BLOCS programs.



**Mary Brydon-Miller**, PhD, professor, and Sarah Banks of Durham University, co-edited the recently released book, "Ethics in Participatory Research for Health and Social Well-Being: Cases and Commentaries." The book is published by Routledge.

[Learn more...](#)



**Kyle Ingle**, PhD, assistant department chair and associate professor, and **Keith Davis**, EdD, and clinical associate professor, both in the Department of ELEOD, were invited to present at the Carnegie Project on the Education Doctorate (CPED) conference, which was held at Arizona State University in October. Their presentation, "Mentoring and Advising EdD Students in an Urban Research University—Before and After," shared how they adapted advising practices for the blended cohort delivery model.



In addition, Dr. Davis and Dr. Ingle, along with **Namok Choi**, PhD, professor, will present at the University Council for Educational Administration (UCEA) convention, which will be held November 14-18. [See a complete listing of presentations...](#)



The Competency-Based Education Network (C-BEN) announced that the UofL, Delphi Center and ELEOD digital story about the first graduate of the **B.S. OLL Healthcare Leadership competency-based education**

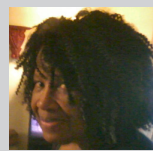
**program** is the winner of its first Storytelling Contest. The contest recognizes excellence in illustrating the value of this innovative approach to higher education. UofL received a \$2,500 award to invest in the CBE program. Lee W. Bewley, PhD, clinical associate professor in ELEOD, is the program director.



**Jeff Sun**, PhD, department chair and professor, Russ Watts, CEHD graduate of the B.S. in Organizational Leadership and Learning program with a track in Training and Development, and Megan Brown, with the Kentucky Science and

Technology Corporation, were interviewed on Mark Hebert's UofL Today Radio Show. Topic of discussion was the \$1.5 million grant to determine how to streamline the licensing and certification process for vets who move into similar civilian jobs.

[Listen to the show...](#)



## Foster Gives Keynote, Presents

Michele Foster, PhD, professor and endowed chair in the Department of Early Childhood and Elementary Education, was the invited keynote speaker at an opening of the exhibit, "Black Educators: Florida's Secret Social Justice Advocates, 1920-1960," which is a celebration of the 60th anniversary of desegregation at the University of Florida (UF). The event was held in October and sponsored by the Center for Race Relations at the Levin School of Law, UF. In addition, Dr. Foster presented with Ruth Heild, director, Philadelphia Education Research Consortium, "How to RPP on a Shoestring Budget: Tips for Making it Work!," during a National Network of Educational Research Practice Partnership (NNERPP) **virtual brown bag event**.

## CEHD Faculty Present at CIK

The following CEHD faculty presented at the Commonwealth Institute of Kentucky's (CIK) fall 2018 Research Meeting:

- Patrick Pössel, PhD, professor in the Department of Counseling and Human Development (ECPY), presented about the Cardinal Success Program;
- Amanda Mitchell, PhD, assistant professor in ECPY, presented about her psychoneuroimmunology research.

CIK is housed in the School of Public Health and Information Sciences and was established with a \$4 million grant from KentuckyOne Health to serve as a transdisciplinary collaborative for population health improvement, policy and analytics. [Learn more...](#)

Follow the CEHD  
on [Twitter](#) and [Facebook](#)



## Submit Items for the Insider

The CEHD Insider is a monthly newsletter that informs faculty, staff, and constituents of college news and events. Information such as research, presentations, publications, awards, conferences, or special events are featured in each issue. If you have news to share, please send to [dorothy@louisville.edu](mailto:dorothy@louisville.edu).





## Bergman Inducted into Hall of Fame for Educators



Matt Bergman, assistant professor in the Department of Educational Leadership, Evaluation and Organizational Development, was inducted in the Union College's Hall of Fame for Educators. The award recognizes individuals who have made outstanding contributions to their fields, been pioneers in their areas of expertise, or provided leadership at regional, state, or national levels. These individuals serve as role models to others in their communities and profession.

## CEHD Faculty, Staff, and Students to Attend Empowerment Luncheon

The following CEHD faculty, staff, and students will attend UofL's Women's Empowerment Luncheon in November: Terri Rowland, director of diversity and assistant professor in the Department of Educational Leadership, Evaluation and Organizational Development; Sherry Durham, co-chair of the Diversity Committee and coordinator of the Multicultural Teacher Recruitment Program; Erica Camp, co-director of the Diversity Committee and administrative associate in the Department of Health and Sport Sciences; and Mallory Mitchell, intended major, B.S. in Middle and Secondary Education program with a track in Social Studies, and member of the Student Diversity Initiatives Council.

## CEHD to Host Students in Teacher Pathways Program

On November 26th, 9 a.m. – 3:30 p.m., CEHD and the UofL Admissions Office will host high school students who are enrolled or interested in the UofL Teacher Pathways (Dual Credit) program. The students will have the opportunity to meet with the Dean, CEHD faculty, CEHD teacher education students, UofL's Executive Director of Admissions, and visit an education class. Please make them feel welcome!

**Portland Elementary** is a CEHD Signature Partnership Initiative school. Below is a group of CEHD students teaching first-grade students about the concept of 'birds-eye' view while learning about maps.



## Student News

**Whitney Abell, Carmen Bellefant, Jennifer Cox, Nicole Fields, Manuel Garr, Adrian Graham, Terra Greenwell, and Justin Woods**, students in the EdD ELOD program, will present at the University Council for Educational Administration (UCEA) convention, which will be held November 14-18. [See a complete listing of presentations...](#)



Jessica Murfree, right; Patti Phillips, CEO of Women Leaders in College Sports

**Jessica Murfree**, first-year student in the Sport Administration doctoral program and Diversity Fellow, was awarded a scholarship to attend the Women Leaders in College Sports National Convention this Fall. Women Leaders in College Sports is the premier leadership organization for women working in college sports. As an active member, Jessica traveled to her hometown of Atlanta, Georgia, for a week of inspiring professional development and career advancement programming. Congratulations on the scholarship!

**Lindsey Smith**, an undergraduate student in the elementary education program and Grawemeyer Scholar, presented with Stephen Tucker, assistant professor in the Department of Elementary Education, a workshop session, "Hands-On Early Number Sense with Technology," at the Tech-Teach-Learn conference that was held at Kentucky Country Day School in Louisville, Kentucky.

**Stacy Crawford Bewley**, a doctoral student in the curriculum and instruction program and education recovery specialist with the Kentucky Department of Education (KDE), is author of the article, "Essential Questions to Enhance Student Engagement," which is featured in *Kentucky Teacher*, a publication of KDE. [Read more...](#)

**Allison Fowler**, a student in ECPY's doctoral program in educational psychology, measurement, and evaluation, was invited to lead a session on, "Translating Learning Theory into Teaching Strategies," for the [School of Interdisciplinary and Graduate Studies' Graduate Teaching Assistant Academy \(GTA\)](#).



Trimble County Schools were recently recognized for receiving accreditation from AdvancEd. CEHD statewide cohort Ed.D. Education Leadership students, **Steve Miracle, Kathy House,** and **Amy Shinn** are on the district leadership team and they are proud of this achievement. AdvancEd provides standards that are tailored for all schools/districts. [Read more...](#)

CEHD statewide cohort EdD Educational Leadership student, **James McMillian**, and his team received support from Transylvania University for students in the Bryan Station High School IT Academy. A scholarship of \$18,000 is offered to each student who successfully completes the program and receives their respective industry certification.



## Alumni News

*Happy Fall!  
Happy Thanksgiving!*

**Glenna Bower**, a graduate of the PhD program in educational leadership and organizational development with a specialization in sport administration, and professor of kinesiology and sport and associate dean of the Pott College of Science, Engineering, and Education, received the University of Southern Indiana's (USI) 2018 Distinguished Professor Award. It is one of the University's most prestigious awards. Dr. Bower will receive a \$15,000 stipend and will deliver the address at a USI fall commencement ceremony. [Read more...](#)

**Valerie Casey**, a graduate of ELEOD's master's in higher education administration program and director of UofL's Women's Center, is Presentation Academy's recipient of the 2018 Tower Award for Women Leaders in Education. [Read more...](#)

**Judi Vanderhaar**, PhD, graduate of the ELEOD's educational leadership and organizational development program and program consultant with the Kentucky Department of Education, published an article in Education Leadership titled, "Boosting SEL in K-12's 'Ivory Towers.'" [Read more...](#)

**Jodi Place**, a graduate of the MAT in Middle and Secondary Education with a concentration in English, presented at the Association for Supervision and Curriculum Development (ASCD) conference that was held in Nashville. The title of her presentation was, "Creating a Trauma Sensitive Culture Through Professional Best Practices and Mindfulness."



## Upcoming Events

- **Tuesday, December 4, 2018, 5 – 7 p.m.**  
CEHD Honors and Awards Celebration  
University Club Ballroom  
Faculty and staff RSVP by November 27, 2018 to [alice.sheffield@louisville.edu](mailto:alice.sheffield@louisville.edu)
- **Friday, December 14, 2018, 7 p.m.**  
UofL Commencement Ceremony  
KFC Yum! Center
- **Saturday, March 2, 2019, 8 a.m. – 5 p.m.**  
Spring Research Conference – co-hosted by UofL,  
University of Kentucky and University of Cincinnati  
Location: University of Kentucky (2019 host institution)  
Bill Gatton Student Center  
[Learn more and register for the conference...](#)

The University of Louisville is an equal opportunity institution.

### Submit Items for the Insider

The CEHD Insider is a monthly newsletter that informs faculty, staff, and constituents of college news and events. Information such as research, presentations, publications, awards, conferences, or special events are featured in each issue. If you have news to share, please send to [dorothy@louisville.edu](mailto:dorothy@louisville.edu).

