



COLLEGE OF EDUCATION & HUMAN DEVELOPMENT

CEHD Insider - February 2018

College, Student, Alumni News, and Special Events

Dean's Message



We are privileged to educate bright and motivated undergraduate and graduate students in our diverse human development, human performance, and educator preparation programs. Our Ed.D. and Ph.D. students are leaders in local school districts, Metro Louisville and across Kentucky. Our talented and dedicated faculty, staff, and community partners are engaged on a daily basis in academic and clinical, field,

practicum, and internship experiences to educate and subsequently support CEHD students in their career transition and development. As the University of Louisville strives to increase enrollment numbers, the CEHD is committed to the following areas, which higher education experts are saying need immediate attention:

- 1). Intensified recruiting competition amid enrollment declines and population declines in particular regions of the U.S.
- 2). Online program growth and multiple delivery methods and new types of schedules for instruction, including competency-based education models.
- 3). The need to articulate higher education's value and the difference a quality higher education makes in an individual's career and long-term earning capacity.
- 4). Considerations, in working with the University, related to tuition pricing and incentives for students to advance through degrees toward graduation.
- 5). New ways to engage alumni and donors and steward relationships with care, attention and evidence shared with them about the impacts of their gifts.
- 6). Marketing strategies for the incoming Generation Z to the University, including the use of social media.
- 7). Increasing scholarship funds for students, particularly students who are first generation college students or students from underrepresented groups.
- 8). Attention to market forces where demands for programs exist in the employment sector and responding to forces where enrollments are declining and programs need revision or new features, such as flexibility or alternative pathways.
- 9). Offering dual credit courses in high schools where secondary students can earn "early college" course credits to jump-start their post-secondary education experience.
- 10). Continuing to partner with community constituency groups,

including industry and business partners, P-12 districts and schools, healthcare and clinical environments, and policy, agency and other similar groups to educate and prepare students for "career and work readiness."

In closing, an article in the Washington Post, "[Higher Education is Headed for Supply and Demand Crisis](#)," summarizes the anticipated drop in high school graduates, which will impact college admissions. We will continue to dedicate ourselves to high quality accredited programs with innovative curricula and theory-to-practice connections; educating all of our students with highly skilled, research and practice productive faculty who teach and advise well; gaining expertise in serving a diverse student population; and creating niche and topical professional learning and experiences for varied student and adult learner audiences. We in the CEHD are excited about the present and are looking forward to the future!

CEHD News...

HSS Faculty and Students Volunteer at Super Bowl

Dr. Chris Greenwell, Professor, Dr. Megan Shreffler, Assistant Professor, and Gin Presley, Instructor, with the Department of Health and Sport Sciences (HSS), led a trip to this year's Super Bowl in Minneapolis, MN. Thirteen Sport Administration students got a chance to volunteer on the NFL/PepsiCo Zero Waste Super Bowl Team. As Green Ambassadors, students were stationed inside the stadium on game day to assist fans in recycling materials, which contributes to enhancing the fan experience. [See CNN article...](#)



Submit Items for the Insider

The CEHD Insider is a monthly newsletter that informs faculty, staff, and constituents of college news and events. Information such as research, presentations, publications, awards, conferences, or special events are featured in each issue. If you have news to share, please send to dorothy@louisville.edu.





Washington Publishes Article

Dr. Ahmad Washington, Assistant Professor in the Department of Counseling and Human Development, published, "Using Hip-Hop Culture and Rap Music in Counseling Black Men," in the Journal of Counseling and Human Development. The article is featured in the January issue of the journal. In the article, Dr.

Washington proposes that counselors can effectively use rap music with Black male clients who identify with Hip-Hop culture to facilitate discussion about the social injustices they face.



Moorman Receives SRLA Award

Dr. Anita Moorman, Professor in the Department of Health and Sport Sciences, was selected to receive the Herb Appenzeller Sport and Recreation Law Association (SRLA) Honor Award. The award is presented to individuals who have given outstanding service to the association. She will be presented the award at the SRLA

annual conference that will be held late February in San Antonio, TX.



George Serving on NYU Board

Dr. Casey George, Assistant Professor in the Department of Educational Leadership, Evaluation and Organizational Development, is serving as a Faculty Affiliate for New York University's (NYU) Center for Research on Higher Education Outcomes. She and other scholars from NYU, Columbia University, The Ohio State

University, University of Denver, James Madison University, and Princeton University are exploring issues regarding college completion and transparency of college costs. In addition, her recent study on perceptions of STEM fields was featured in *Insider Higher Ed*. The study also appeared in the *American Educational Research Journal*.



Pennington Publishes Articles, Conducts Training in Africa

Dr. Rob Pennington, Associate Professor and Assistant Department Chair in Special Education, published with Jessica Rockhold, "A Brief Report: An Evaluation of an Instructional Package for Teaching Sentence Writing to Students with Autism Spectrum Disorder," in the Journal of Autism and Developmental Disorders. Ms. Rockhold is a graduate of the B.S. in Elementary Education, Moderate and Severe Disabilities and an M.Ed. in Teacher Leadership, Special Education programs. Dr. Pennington also published with Dr. Kathy Carter, Assistant Professor in the Department of Health and Sport Sciences, "Use of Video modeling to Teach Weight Lifting Techniques to Adults with Down Syndrome: A Pilot Study," in *Physical Disabilities: Education and Related Services*.

In early January, Dr. Pennington spent a week in Addis, Ethiopia where he conducted several teacher, parent, and staff trainings and consulted with teachers and parents about challenging behavior.

He also gave four presentations at The Council on Exceptional Children's Division on Autism and Developmental Disabilities annual conference, which was held in mid-January.



Brydon-Miller Keynote at ALARA Conference

Dr. Mary Brydon-Miller, Associate Professor in the Department of Educational Leadership, Evaluation and Organizational Development, is the keynote speaker for the Action Learning, Action Research Association (ALARA) and Participatory Action Research World Congress on the Norwich University campus in Vermont in June. Her conference keynote track is titled, "Action Learning, Action Research for Communities' Developments."



Adelson to Serve on NAGC Panel

Dr. Jill Adelson, Associate Professor in the Department of Counseling and Human Development, was invited to serve on a panel at the National Association for Gifted Children (NAGC) Advocacy and Leadership conference, which will be held in Washington, D.C. in March. The panel discussion is titled,

"Gifted Education Works--What We Know from Research." She will serve alongside Dr. Jonathan Parker, NAGC President-elect and Dr. Del Siegle, Director of the National Center for Research in Gifted Education.

ELEOD Hosts JCPS Leadership Breakfast



Drs. Jeffrey Sun, Department Chair, Kyle Ingle, Assistant Department Chair, Harrie Buecker, Liaison for District and School Partnerships, and Blake Haselton, Clinical Associate Professor, with the Department of Educational Leadership, Evaluation and Organizational Development (ELEOD), hosted the department's annual Leadership Breakfast Meeting with Jefferson County Public Schools' (JCPS) administration. The event was held in mid-January at the Van Hoose Education Center. Dean Ann Larson welcomed the group and gave updates on the UofL/JCPS partnership. Dr. Haselton presented to Dr. Debbie Powers the 2017 University Council for Education Administration (UCEA) Excellence in Educational Leadership Award. Dr. Powers is a graduate of the CEHD's Educational Leadership and Organizational Development (ELOD) Ed.D. program. Dr. Ingle opened the meeting. Dr. Buecker presented updates on the CEHD's Principal Preparation program. Dr. Greg Herberger, a graduate of the ELOD Ph.D. program and principal at Eastern High School, gave a presentation based on his dissertation research, "Exploring the implementation of race- and socioeconomic-based student assignment plan on college readiness." Dr. Sun provided closing remarks for the event.

Submit Items for the Insider

The CEHD Insider is a monthly newsletter that informs faculty, staff, and constituents of college news and events. Information such as research, presentations, publications, awards, conferences, or special events are featured in each issue. If you have news to share, please send to dorothy@louisville.edu.

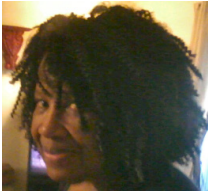




CEHD Represented at AACTE Conference

Dean Ann Larson is a member of the American Association of Colleges for Teacher Education (AACTE) Executive Board and was required to attend board meetings in January. The Board members attended a press briefing held by the AACTE Clinical Practice Commission at the National Press Club in Washington, D.C.

The AACTE Clinical Practice Commission announced the release of their report, "A Pivot Toward Clinical Practice, its Lexicon, and the Renewal of Educator Preparation," at the press conference. [See the full report...](#)



Foster to Conduct Discourse and Semiotics Workshop

Dr. Michele Foster, Professor in the Department of Early Childhood and Elementary Education, will conduct a Discourse and Semiotics Workshop titled, "Getting to Know You: Identities, Relationships, and

Perspectives in Undergraduate Student Journals," on March 23, 12:30 - 2 p.m., room 117, Stevenson Hall, on the Belknap Campus. [Learn more about Dr. Foster's workshop and other upcoming Discourse on Semiotics Workshops...](#)

Greenwell on UofL Today Show

Dr. Chris Greenwell, Professor in the Department of Health and Sport Sciences, was a recent guest on Mark Hebert's UofL Today Radio Show. The topic of conversation focused on Dr. Greenwell's study of Chicago Cubs fans, college students' attendance at sporting events and how their schools' wins and losses affect campus pride. [Listen to the show...](#)

Chisholm and Whitmore Publish Book

READING
CHALLENGING TEXTS
Layering Literacies Through the Arts



James S. Chisholm and Kathryn F. Whitmore

James Chisholm, Associate Professor in the Department of Middle and Secondary Education, and Kathy Whitmore, Professor in the Department of Early Childhood and Elementary Education, published, "[Reading Challenging Texts: Layering Literacies Through the Arts](#)," through the National Council of Teachers of English and Routledge. The book, supported by a grant from the Jewish Heritage Fund for Excellence, reports a multi-year

research project, funded by the Kentucky Center for the Performing Arts, in which middle school teachers in Louisville used the arts to teach about challenging Holocaust literature, specifically Anne Frank's diary.



Lee Publishes Article

Jean Lee, Instructor in the Department of Special Education, and co-author, Jennifer Ritchotte, published, "[Seeing and Supporting Twice-Exceptional Learners](#)," in the 2e Newsletter, which is a supplement to the 2e: Twice-Exceptional Newsletter. The article addresses four topics related to legislative acts and professional initiatives, educational rights, and challenges to understanding and supporting the rights of twice exceptional learners.



Shuck Interviewed by BW People

While attending the Society for Human Resource Management (SHRM) conference in India this past September, Dr. Brad Shuck, Associate Professor in the Department of Educational Leadership, Evaluation and Organizational Development, was interviewed by BW People for the following

articles, "[It is More Important for HR to Retain Talented Employees Than Hiring](#)," and "[Leaders Should be Open to Employee Ideas, Else They Create a Psychologically Unsafe Workplace: BI Worldwide](#)." Dr. Shuck also published an article in the January 2, 2018 issue of the Hindustan Times titled, "[Can Learning Above EVP Help HR Professionals?](#)"

Staff News



Staff Highlight: Shannon Frey

Shannon Frey, a social worker by training, has been with the University of Louisville for 16 years. During the last eight years, she has worked in the CEHD's Department of Special Education where she coordinates several projects including ABRI (Academic and Behavioral Response to Intervention) and assists with the SPDG (State

Personnel Development Grant). She is also assisting Dr. Amy Lingo with conference preparations for the KEEP Summit this May, which she enjoys.

Shannon co-facilitates with Marian Vasser and Lindsay Ronay a monthly book study of, "The New Jim Crow: Mass Incarceration in the Age of Colorblindness," by Michelle Alexander. She participated in Ms. Vasser's training to lead Critical Conversations on campus and co-facilitated a group last year in CEHD with Dr. Katy Hopkins. Shannon has served with Mike Jett, Department of Health and Sport Science, as a co-captain for the American Heart Association (AHA) Heart Walk. This year, her daughter and their puppy, Easton, joined in the fun as well.

When she is not working, Shannon enjoys running, swimming, biking, knitting, and spending time with friends and family. She also volunteers at St. John's Center for Homeless Men. She is married to Andy, a professor in the Kent School of Social Work, and they have two children, Sam, 15, and Amelia, 13.

Did You Know...

Ekstrom Library is home to the Barbara S. Miller Collection, which is a multicultural children's literature collection. This collection is a collaboration between UofL Libraries and the CEHD. Dean Ann Larson served on the committee that founded the collection several years ago. The Miller Collection is supported through funds from the Libraries' Jessie B. Crady Endowment as well as other sources. [Learn more about the collection...](#)

Like us on Facebook:

<http://www.facebook.com/uofleducation>



The University of Louisville is an equal opportunity institution.

Submit Items for the Insider

The CEHD Insider is a monthly newsletter that informs faculty, staff, and constituents of college news and events. Information such as research, presentations, publications, awards, conferences, or special events are featured in each issue. If you have news to share, please send to dorothy@louisville.edu.



Student News

ECPY Student Co-authors Book

Dr. Nai-Cheng Kuo of Augusta University, Dr. Susan Peters of Michigan State University, and **Quentin Hunter**, a doctoral student in the counselor education and supervision program, have published an edited book titled, "Supporting Response to Intervention (RTI) Through Instructional Leadership." The book is published by Stipes Publishing, Champaign, IL.

Khaldoun Almously, a doctoral student in the Educational Leadership and Organizational Development program and instructor in the Classical/Modern Languages Department, was recently featured in UofL Today. He was selected to receive the United States President's Volunteer Award for 2016 and will also receive the award again in 2017 for his volunteer work. In 2016, he completed 125 hours of volunteer work with the Louisville Metro Police Department (LMPD), and in 2017 he completed 156 hours of volunteer work with the LMPD.

Shelby Burton, a doctoral student in the counseling psychology program, along with Dr. Lisa Hooper, Professor, and co-authors, published, "Suicidality in Black American Youth Living in Impoverished Neighborhoods: Is School Connectedness a Protective Factor?", in [School Mental Health](#).

Alumni News

Diane Porter, a graduate of the M.Ed. in Counseling and Personnel Services program, was elected again to serve as Chairwoman of the Jefferson County Public Schools Board of Education. [Read more...](#)

In late January, **Dr. Lois Adams-Rodgers**, a graduate of the Ed.D. program in Educational Administration, led a professional learning focus session at the Ohio Valley Educational Cooperative (OVEC). The session, "The Principal as Educational Leader: Structure and Support for Success," was designed for principals and their mentors. Dr. Adams-Rodgers has served in many education leadership roles in Kentucky including the Kentucky Department of Education Deputy Commissioner, and the Deputy Executive Director of the Council for Chief State School Officers. Since retiring she has worked as a consultant with the Wallace Foundation, served as Board Chair for the Longview Foundation for Education in World Affairs and International Understanding, is a member of the CEHD's Advisory Board and served on many other foundations and education advisory boards.

Dr. Kish Cumi, a graduate of the Ph.D. program in Counseling Psychology, and Dr. Lisa Hooper, Associate Professor in the Department of Counseling and Human Development, along with their co-authors published, "Impact of Depressive Symptoms and Alcohol Use on Disordered Eating and Suicidality: A Moderated Mediation Study," in the [Journal of Mental Health Counseling](#).

Dr. Kathy Zeitz, a graduate of the Ed.D. Educational Leadership program, was selected to be a member of the [2018 Class of Bingham Fellows](#). The program is part of Leadership Louisville and provides experienced leaders with the opportunity to work with peers in giving critical issues visibility and momentum to move the community forward.

The Odessa Police Department in Texas welcomed **Yosef Ben Yaakov Yisrael** as a new officer in January. He is a graduate of the B.S. in Workforce Leadership program. [Read more...](#)

Upcoming Events

- *Friday, February 9, 2018, 7 - 7:45 p.m.*
Gheens Science Hall and Rauch Planetarium
John R. Gernert Star Ball Exhibit Celebration
Free and open to the public
[Learn more about the experience...](#)
- *Saturday, March 24, 2018, 9 a.m. - 4 p.m.*
2018 Spring Research Conference
This annual conference is hosted by the CEHD, University of Cincinnati, and the University of Kentucky. CEHD is the host institution this year. The conference will be held on Shelbyhurst Campus, Founder's Union Building.
[Learn more and register...](#)

Submit Items for the Insider

The CEHD Insider is a monthly newsletter that informs faculty, staff, and constituents of college news and events. Information such as research, presentations, publications, awards, conferences, or special events are featured in each issue. If you have news to share, please send to dorothy@louisville.edu.

