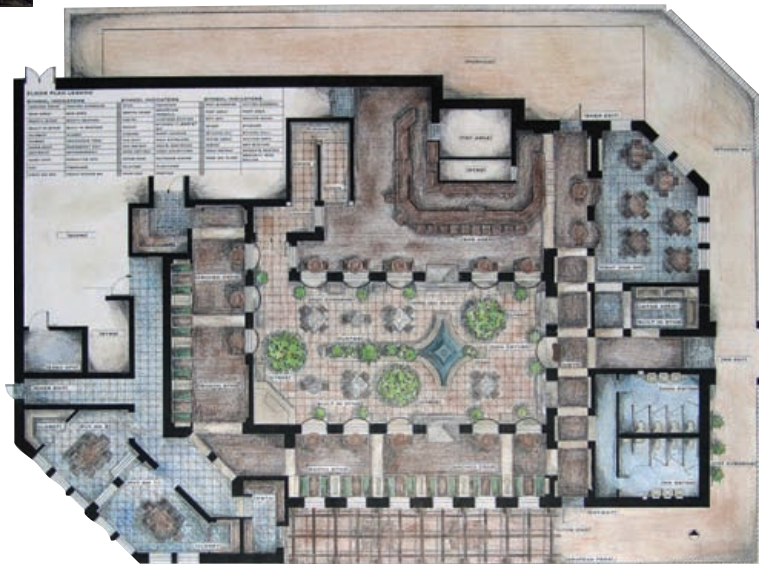
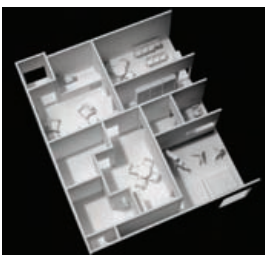
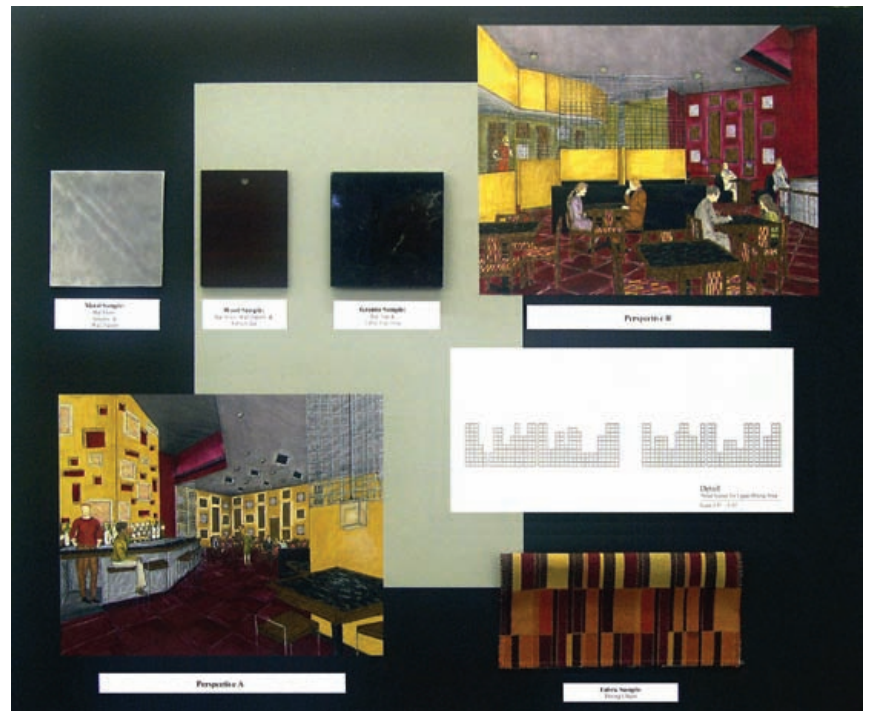


# Interior Architecture

**BFA  
Program  
Information**



## About the Program

The Interior Architecture (IAR) studio art track is a professional preparatory program leading to the Bachelor of Fine Arts degree. It is intended to prepare students to eventually assume leadership positions in the field of Interior design. The IAR program at the Hite Art Institute is based upon twin strategies: conceptual development and technical proficiency. These aims are accomplished through both hand and computer-based work.



Interior Design is an art, and as such, has a close relationship to all forms of art and creative thinking. Ideally, designers need to be aware of, and able to form critical judgments about, society and culture, and the role artists and designers play in them. Consequently, the University of Louisville program incorporates a thorough grounding in the liberal arts, and in the fine arts. This is in addition to preparation specific to Interior Design. Studio and seminar settings are used to integrate diverse and complicated liberal arts learning with the theoretical, practical, and technical requirements of Interior Design.



## Interior Architecture Faculty

Stow Chapman,  
M.Arch.Associate  
Professor, Interior  
Architecture

Mooh-he Baik. M.F.A.  
Associate Professor,  
Interior Architecture



## Bachelor of Fine Arts in Interior Architecture

### Prerequisites

Admission to this program is selective. Students may apply to the program after having completed the Foundations Program studio courses, plus having completed or being currently enrolled in Drafting for Designers. Students must also have a 3.01 GPA in studio art classes and a minimum GPA of 2.25 overall to be eligible.

### Interior Architecture BFA Requirements

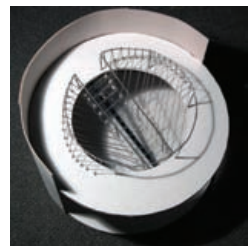
Students graduating with a BFA in the Interior Architecture program complete approximately half of their total course work in the Department of Fine Arts, including 28 hours in the IA track. In addition, students must take 62 hours of University-wide general education requirements, College of Arts & Sciences programmatic requirements, division of Humanities requirements and electives.

### Foundations Program

ART 105 Foundation 2-D Design  
ART 106 Foundation 3-D Design  
ART 115 Foundation Drawing I  
ART 116 Foundation Drawing II

### Art History Requirements

ARTH 250 Survey of Ancient to Medieval Art  
ARTH 270 Survey of Renaissance to Modern Art  
ARTH 347 Historic Interiors  
Plus one additional elective in Art History.



## Interior Architecture Required Courses

### ART 361 Drafting for Designers

This course provides an introduction to Interior Architecture. The course work involves learning through extensive hand and computer drafting.

### ARTH 347 Historic Interiors

This course uses lecture and special assignments to study Interior Architecture in relation to such elements as design, culture, history, furniture and decorative elements.

### ART 561 Interior Architecture: Design Process

This studio uses course work and lectures to introduce the methods required to initiate and develop Interior Architecture projects. There is an emphasis on gathering and organizing information and data. Small scale interior design work includes such projects as small offices, residential use areas, and designs for special populations.



### ART 562 Interior Architecture: Spatial Concepts

This studio uses increasingly more comprehensive studio projects to develop understanding of the third and fourth dimension in Interior Architecture. The work includes model building, three dimensional graphic visualization and study of furnishings, light and color.

### ART 563 Interior Architecture: Hospitality Projects

This studio involves the design and communication of projects relating to historic preservation, hospitality, hotels, restaurants and similar uses, and commercial sales.

### ART 564 Interior Architecture: Institutional Projects

This studio involves the design of offices and medical facilities including contract documents and furniture selection.

### ART 565 Directed Projects in Interior Architecture

This studio uses individually directed development of projects involving retail, institutional or hospitality uses with an emphasis on design and advanced research. Real spaces and real clients are simulated and engineering coordination is a part of the work. This studio may be repeated to a maximum of 6 hours.

### ART 566 Interiors Construction

This lecture class is a study of interiors construction components, materials and methods. Building codes, drawings and specifications, and construction terminology are important areas of the class work.

### ART 567 Textiles and Finishes for Interior Design

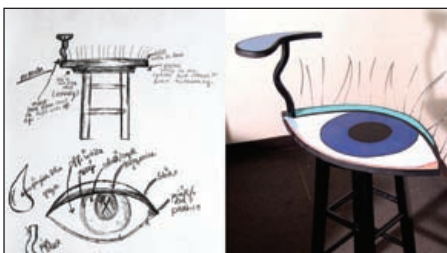
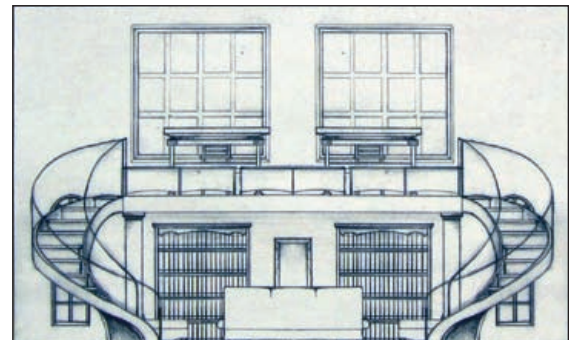
This lecture class emphasizes fabrics, wall coverings and floor coverings including fabrication, marketing and installation procedures.

### ART 568 Building Systems

This lecture class involves the study of building systems including hvac., plumbing, electrical, acoustics, fire protection and other systems. The course includes an emphasis on lighting and lighting systems.

### ART 596 Professional Development in Interior Design

This course prepares students to enter the Intern (first professional employment) phase of Interior Design by formally consolidating a record of university and preprofessional accomplishment.



## Interior Architecture Related Electives

### ART 470 Advanced Rendering Techniques

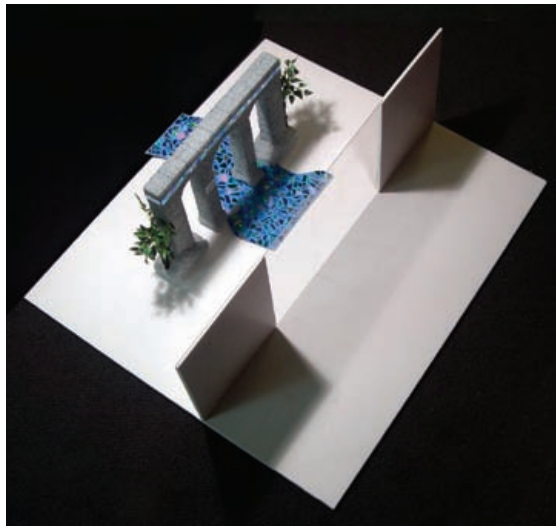
Study of advanced rendering techniques in a variety of media appropriate to interior design.

### ART 569 Autocad

An intensive workshop in the specialized area of art – Autocad for Interiors

### ART 595 Independent Study

Experimentation on individual problems in Interior Architecture



### ART 440 Cooperative Internship in Art – Interior Design

An elective individually arranged course combining a work experience with a related academic or creative project.

### ART 315 Drawing and Composition

Further study of drawing with a focus on the development of observational and formal skills through an emphasis on spatial structures and the organization of pictorial space



### ART 381 Introduction to Fiber/Mixed Media

This mixed media course introduces fiber and fabric materials and processes. Emphasis is placed on the interconnectedness of fiber to other media – painting and printing on fabric, collage and photo imagery on cloth and sculptural form in fiber.

### ART 321 Introduction to Sculpture

Introduction to concepts, materials and processes of sculpture. This course explores figurative and non-figurative issues in three dimensional art.

### ART 576 Web Site Design

Investigation and practice of website design as a contemporary fine art and communication medium.

